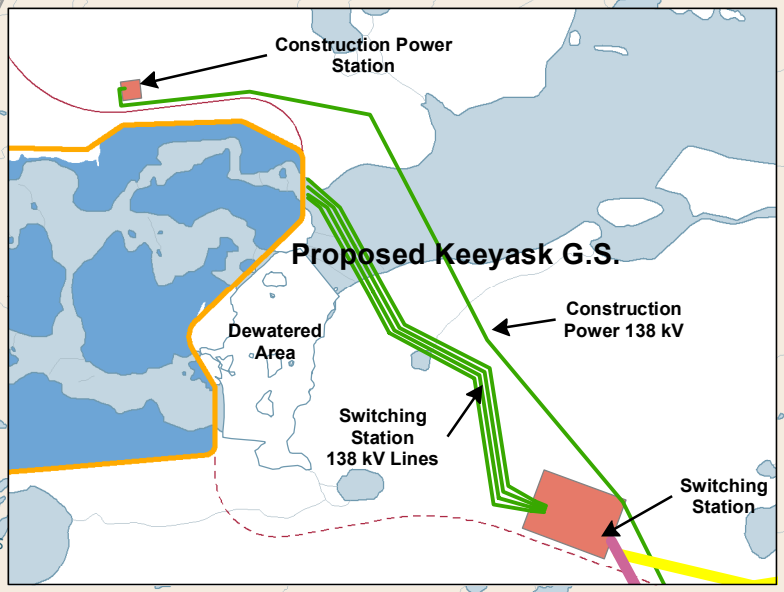


**Notes:**

All proposed Transmission Lines are Alternative Routes undergoing initial stages of the site selection process. Alignment and other design parameters are preliminary and subject to change

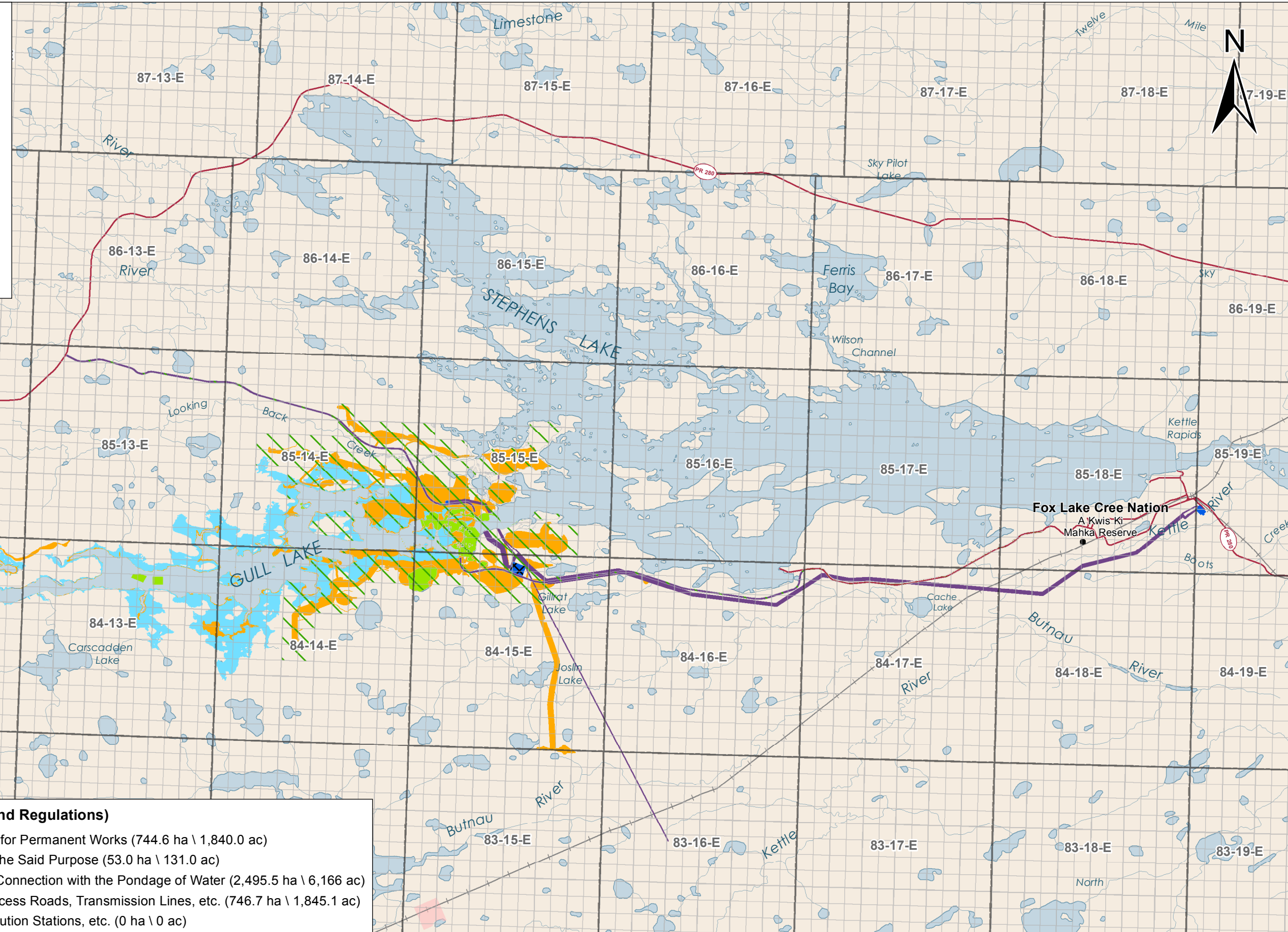
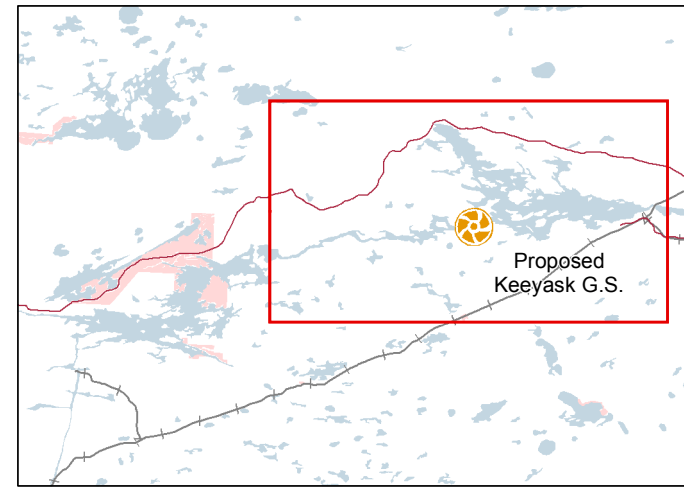
Map illustrates the estimated extent of the dewatered area when the spillway is not in operation. The true extent of this area is uncertain due to the limited bathymetric data.



<b>DATA SOURCE:</b> Manitoba Hydro; Government of Manitoba; Government of Canada; Manitoba Hydro - Transmission; Manitoba Hydro - Water Resource Engineering (PP_95perc_4327_159_shore_rev5)		
<b>CREATED BY:</b> Manitoba Hydro - Hydro Power Planning - GIS & Special Studies		
<b>COORDINATE SYSTEM:</b> UTM NAD 1983 Z15N	<b>DATE CREATED:</b> 13-FEB-12	<b>REVISION DATE:</b> 22-MAY-12
<b>VERSION NO.:</b> 2.0	<b>QA/QC:</b> APPROVED	

<b>Legend</b>		
Transmission Line (Existing)	Generating Station (Existing)	Potential Dewatered Area
Transmission Line (Proposed)	Converter Station (Existing)	Initial Flooded Area (159 m)
<b>Generation Outlet Transmission Lines</b>		
Route Alternative Option A	Keyask Principal Structures	Existing Water Level
Route Alternative Option B	Transmission Substation (Proposed)	Highway
Route Alternative Option C	Proposed Access Road	Access Road

**Keyask Transmission Project**  
Preliminary Transmission Corridors  
During Keyask Generation Project Operation Phase



**Legend (as per Section 12 (3) (h) of Water Power Act and Regulations)**

<span style="display:inline-block; width:15px; height:10px; background-color:orange;"></span>	(a) Lands of the Province Not Covered by Water Required for Permanent Works (744.6 ha \ 1,840.0 ac)
<span style="display:inline-block; width:15px; height:10px; background-color:yellow;"></span>	(b) Lands of the Province Covered by Water Required for the Said Purpose (53.0 ha \ 131.0 ac)
<span style="display:inline-block; width:15px; height:10px; background-color:lightblue;"></span>	(c) Lands of the Province Required Only to be Flooded in Connection with the Pondage of Water (2,495.5 ha \ 6,166 ac)
<span style="display:inline-block; width:15px; height:10px; background-color:purple;"></span>	(d) Lands of the Province Required for Right of Way for Access Roads, Transmission Lines, etc. (746.7 ha \ 1,845.1 ac)
<span style="display:inline-block; width:15px; height:10px; background-color:blue;"></span>	(e) Lands of the Province Required for Substations, Distribution Stations, etc. (0 ha \ 0 ac)

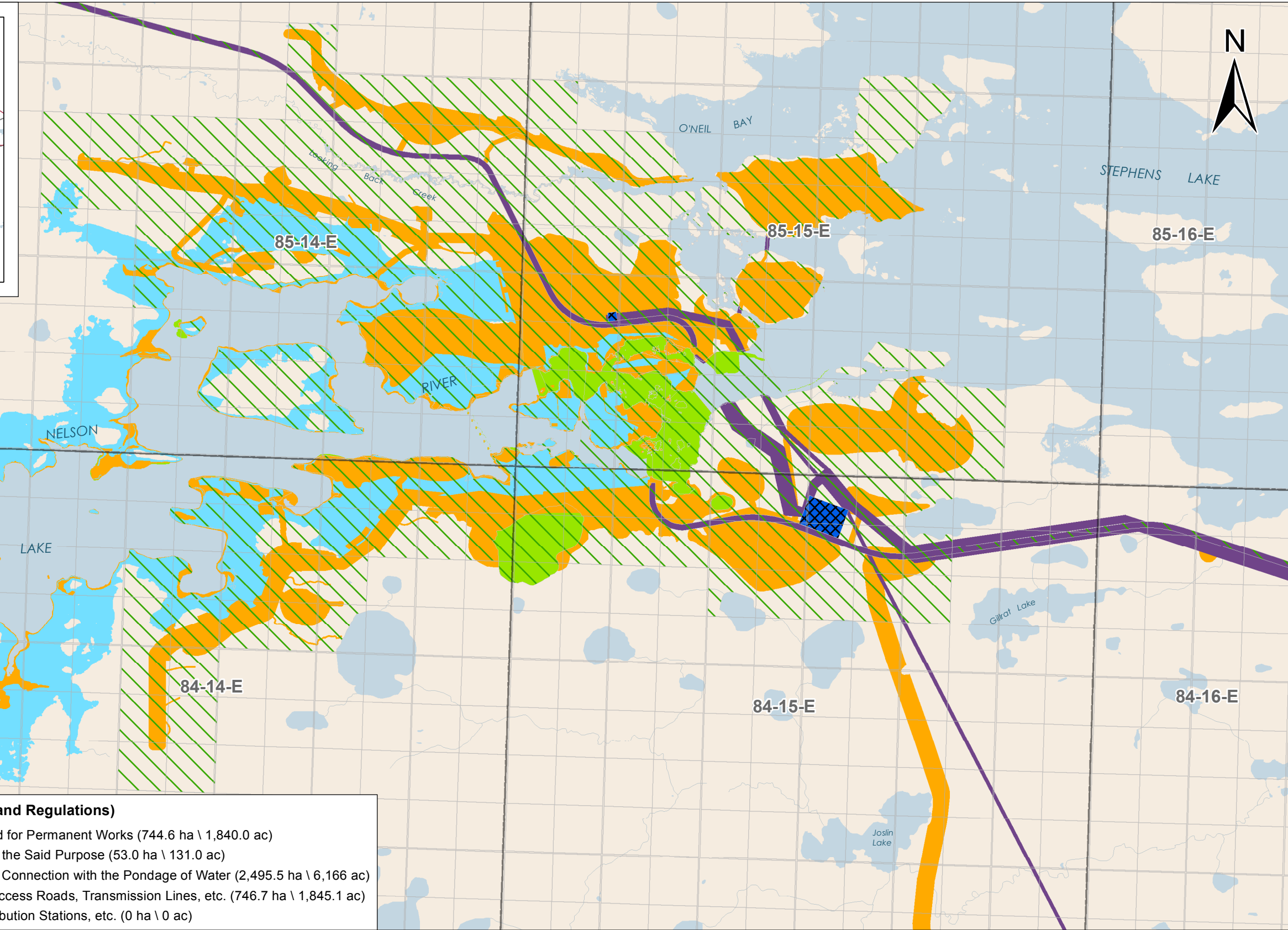
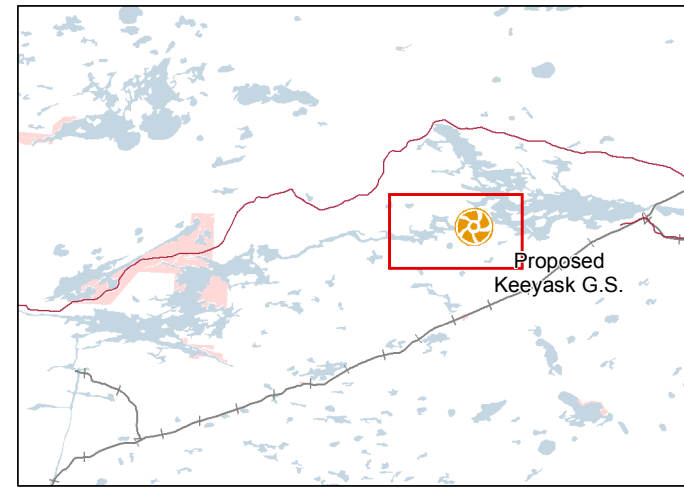


DATA SOURCE: Manitoba Hydro; Government of Manitoba; Government of Canada; Keeyask Water Power Acts Lands Required;		
CREATED BY: Manitoba Hydro - Hydro Power Planning - GIS & Special Studies		
COORDINATE SYSTEM: UTM NAD 1983 Z15N	DATE CREATED: 12-JAN-12	REVISION DATE: 12-MAY-14
0 2 4 Kilometres	VERSION NO: 2.0	QA/QC: APPROVED
0 2 4 Miles		

<span style="display:inline-block; width:15px; height:10px; border:1px dashed green;"></span>	Lands to be Owned by Keeyask Hydropower Limited Partnership	<span style="display:inline-block; width:15px; height:10px; border:1px solid black;"></span>	Township Range Grid
<span style="display:inline-block; width:15px; height:10px; border:1px dashed black;"></span>	Lands to be Owned by Manitoba Hydro	<span style="display:inline-block; width:15px; height:10px; border:1px solid black;"></span>	Quarter Section Grid
<span style="display:inline-block; width:15px; height:10px; border:1px solid black;"></span>	Ownership by Crown	<span style="display:inline-block; width:15px; height:10px; background-color:lightcoral;"></span>	First Nation Reserve
<span style="display:inline-block; width:15px; height:10px; background-color:lightblue;"></span>	Non-Required Existing Water	<span style="display:inline-block; width:15px; height:10px; border-bottom:2px solid red;"></span>	Highway
		<span style="display:inline-block; width:15px; height:10px; border-bottom:1px dashed black;"></span>	Rail

WULS-1-00195-07310-D-0007\_0001

## Keeyask Project Lands Required During Construction Overview Level



**Legend (as per Section 12 (3) (h) of Water Power Act and Regulations)**

- (a) Lands of the Province Not Covered by Water Required for Permanent Works (744.6 ha \ 1,840.0 ac)
- (b) Lands of the Province Covered by Water Required for the Said Purpose (53.0 ha \ 131.0 ac)
- (c) Lands of the Province Required Only to be Flooded in Connection with the Pondage of Water (2,495.5 ha \ 6,166 ac)
- (d) Lands of the Province Required for Right of Way for Access Roads, Transmission Lines, etc. (746.7 ha \ 1,845.1 ac)
- (e) Lands of the Province Required for Substations, Distribution Stations, etc. (0 ha \ 0 ac)



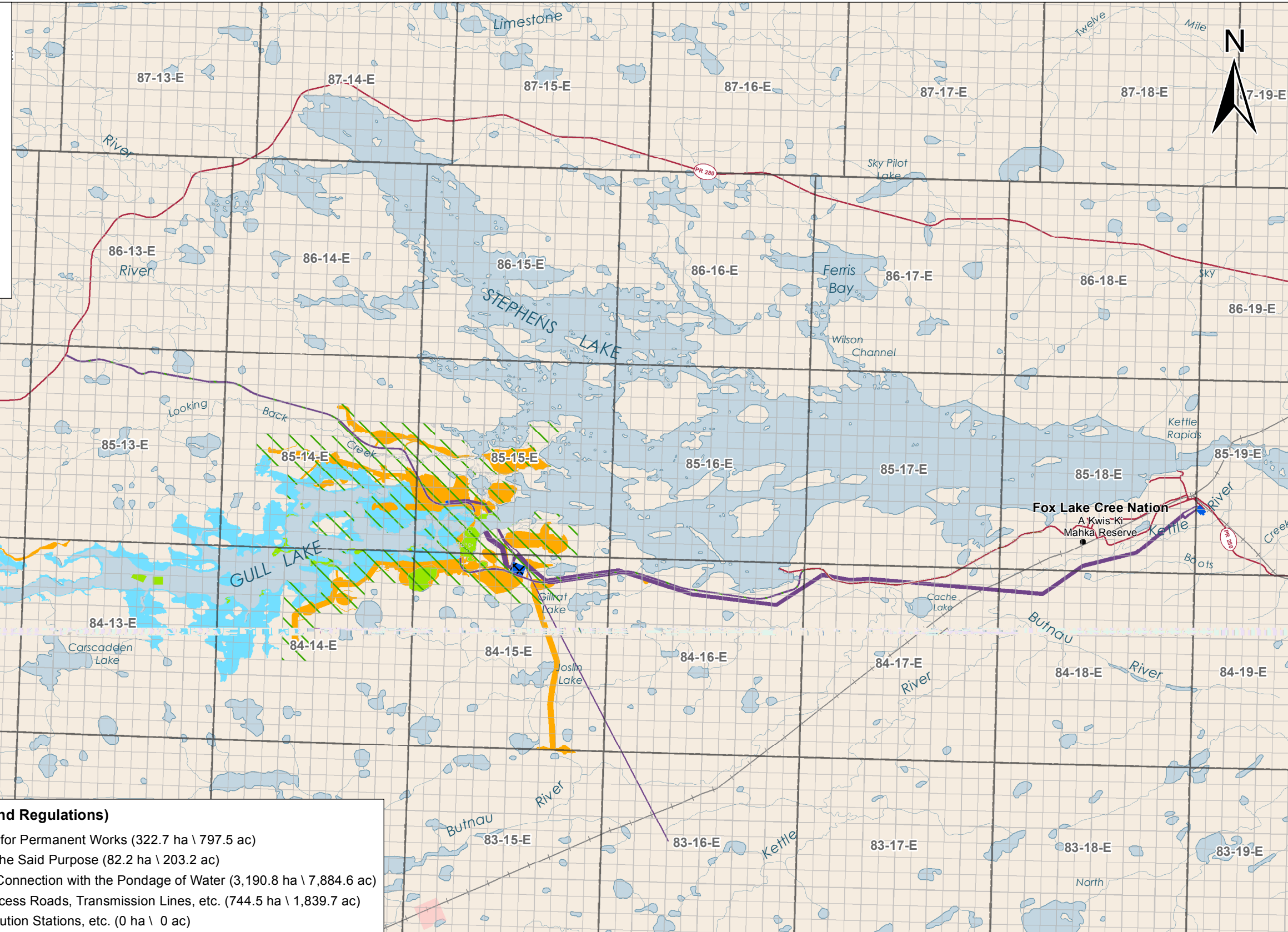
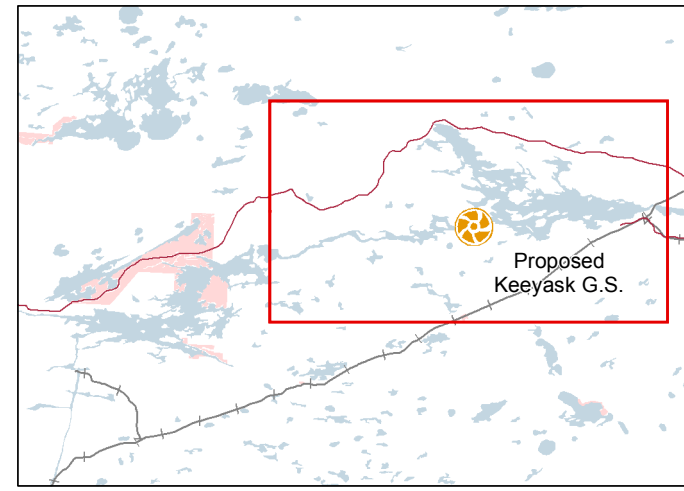
<b>DATA SOURCE:</b> Manitoba Hydro; Government of Manitoba; Government of Canada; Keeyask Water Power Acts Lands Required;		
<b>CREATED BY:</b> Manitoba Hydro - Hydro Power Planning - GIS & Special Studies		
<b>COORDINATE SYSTEM:</b> UTM NAD 1983 Z15N	<b>DATE CREATED:</b> 12-JAN-12	<b>REVISION DATE:</b> 12-MAY-14
		<b>VERSION NO:</b> 2.0 <b>QA/QC:</b> APPROVED

**Legend**

- Lands to be Owned by Keeyask Hydropower Limited Partnership
- Lands to be Owned by Manitoba Hydro
- Non-Required Existing Water
- Township Range Grid
- Quarter Section Grid

**Keeyask Project  
Lands Required  
During Construction  
Site Level**

WULS-1-00195-07310-D-0008\_0001



**Legend (as per Section 12 (3) (h) of Water Power Act and Regulations)**

<span style="display: inline-block; width: 15px; height: 10px; background-color: orange; border: 1px solid black;"></span>	(a) Lands of the Province Not Covered by Water Required for Permanent Works (322.7 ha \ 797.5 ac)
<span style="display: inline-block; width: 15px; height: 10px; background-color: lightgreen; border: 1px solid black;"></span>	(b) Lands of the Province Covered by Water Required for the Said Purpose (82.2 ha \ 203.2 ac)
<span style="display: inline-block; width: 15px; height: 10px; background-color: lightblue; border: 1px solid black;"></span>	(c) Lands of the Province Required Only to be Flooded in Connection with the Pondage of Water (3,190.8 ha \ 7,884.6 ac)
<span style="display: inline-block; width: 15px; height: 10px; background-color: purple; border: 1px solid black;"></span>	(d) Lands of the Province Required for Right of Way for Access Roads, Transmission Lines, etc. (744.5 ha \ 1,839.7 ac)
<span style="display: inline-block; width: 15px; height: 10px; background-color: blue; border: 1px solid black;"></span>	(e) Lands of the Province Required for Substations, Distribution Stations, etc. (0 ha \ 0 ac)



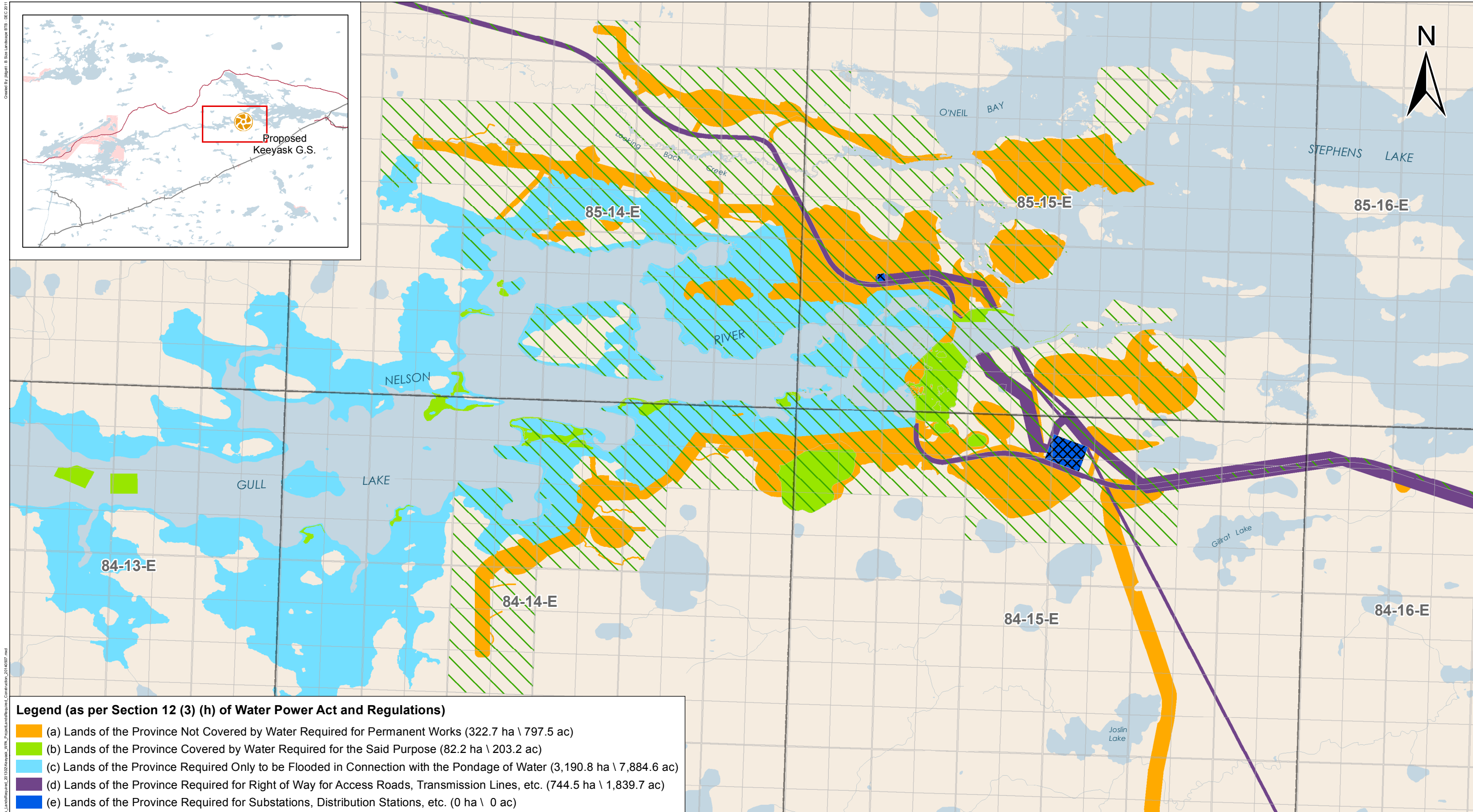
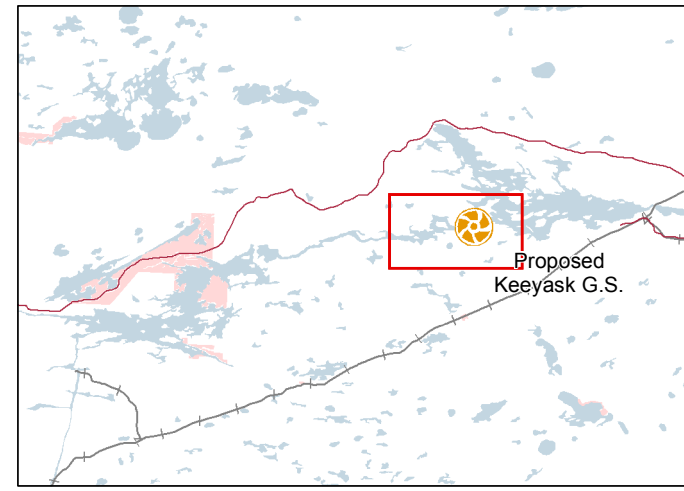
<b>DATA SOURCE:</b> Manitoba Hydro; Government of Manitoba; Government of Canada; Keeyask Water Power Acts Lands Required;		
<b>CREATED BY:</b> Manitoba Hydro - Hydro Power Planning - GIS & Special Studies		
<b>COORDINATE SYSTEM:</b> UTM NAD 1983 Z15N	<b>DATE CREATED:</b> 12-JAN-12	<b>REVISION DATE:</b> 12-MAY-14
<b>VERSION NO.:</b> 2.0	<b>QA/QC:</b> APPROVED	

**Legend**

<span style="display: inline-block; width: 15px; height: 10px; border: 1px dashed green;"></span>	Lands to be Owned by Keeyask Hydropower Limited Partnership	<span style="display: inline-block; width: 15px; height: 10px; border: 1px solid black;"></span>	Township Range Grid
<span style="display: inline-block; width: 15px; height: 10px; border: 1px dashed black;"></span>	Lands to be Owned by Manitoba Hydro	<span style="display: inline-block; width: 15px; height: 10px; border: 1px solid black;"></span>	Quarter Section Grid
<span style="display: inline-block; width: 15px; height: 10px; border: 1px solid black;"></span>	Ownership by Crown	<span style="display: inline-block; width: 15px; height: 10px; background-color: pink;"></span>	First Nation Reserve
<span style="display: inline-block; width: 15px; height: 10px; background-color: lightblue;"></span>	Non-Required Existing Water	<span style="display: inline-block; width: 15px; height: 10px; border-bottom: 2px solid red;"></span>	Highway
		<span style="display: inline-block; width: 15px; height: 10px; border-bottom: 1px dashed black;"></span>	Rail

**WULS-1-00195-07310-D-0009\_0001**

**Keeyask Project  
Lands Required  
During Operation  
Overview Level**



**Legend (as per Section 12 (3) (h) of Water Power Act and Regulations)**

<span style="display: inline-block; width: 15px; height: 10px; background-color: orange; border: 1px solid black;"></span>	(a) Lands of the Province Not Covered by Water Required for Permanent Works (322.7 ha \ 797.5 ac)
<span style="display: inline-block; width: 15px; height: 10px; background-color: limegreen; border: 1px solid black;"></span>	(b) Lands of the Province Covered by Water Required for the Said Purpose (82.2 ha \ 203.2 ac)
<span style="display: inline-block; width: 15px; height: 10px; background-color: cyan; border: 1px solid black;"></span>	(c) Lands of the Province Required Only to be Flooded in Connection with the Pondage of Water (3,190.8 ha \ 7,884.6 ac)
<span style="display: inline-block; width: 15px; height: 10px; background-color: purple; border: 1px solid black;"></span>	(d) Lands of the Province Required for Right of Way for Access Roads, Transmission Lines, etc. (744.5 ha \ 1,839.7 ac)
<span style="display: inline-block; width: 15px; height: 10px; background-color: blue; border: 1px solid black;"></span>	(e) Lands of the Province Required for Substations, Distribution Stations, etc. (0 ha \ 0 ac)



<b>DATA SOURCE:</b> Manitoba Hydro; Government of Manitoba; Government of Canada; Keeyask Water Power Acts Lands Required;		
<b>CREATED BY:</b> Manitoba Hydro - Hydro Power Planning - GIS & Special Studies		
<b>COORDINATE SYSTEM:</b> UTM NAD 1983 Z15N	<b>DATE CREATED:</b> 12-JAN-12	<b>REVISION DATE:</b> 12-MAY-14
<b>VERSION NO.:</b> 2.0	<b>QA/QC:</b> APPROVED	

**Legend**

<span style="display: inline-block; width: 15px; height: 10px; background: repeating-linear-gradient(45deg, transparent, transparent 2px, green 2px, green 4px); border: 1px solid black;"></span>	Lands to be Owned by Keeyask Hydropower Limited Partnership	<span style="display: inline-block; width: 15px; height: 10px; border: 1px solid black;"></span>	Township Range Grid
<span style="display: inline-block; width: 15px; height: 10px; background: repeating-linear-gradient(-45deg, transparent, transparent 2px, green 2px, green 4px); border: 1px solid black;"></span>	Lands to be Owned by Manitoba Hydro	<span style="display: inline-block; width: 15px; height: 10px; border: 1px solid black;"></span>	Quarter Section Grid
<span style="display: inline-block; width: 15px; height: 10px; background-color: lightblue; border: 1px solid black;"></span>	Non-Required Existing Water		

**Keeyask Project  
Lands Required  
During Operation  
Site Level**

WULS-1-00195-07310-D-0010\_0001