

**WATER AVAILABILITY AND DROUGHT CONDITIONS REPORT  
Manitoba**

August 4, 2011

**Synopsis/Overview**

Moderate drought conditions (meteorological) are prevailing in areas from Bisset south to the international border in southeastern Manitoba.

Rainfall over northern Manitoba during the last month has resulted in a return to normal or near normal conditions. With this recent rainfall, precipitation has returned to average or above average in northern Manitoba during the last three months. However, flows and water levels in some northern stream/ivers and lakes are still below average.

**Outlook**

Drought indices demonstrate moderately dry conditions in areas from Bisset south to the international border and mild dry from Bisset north to Charron lake in eastern Manitoba. Drought indices also demonstrate near normal but mild dry conditions for northern Manitoba.

Environment Canada's seasonal forecast is for above normal temperatures for the entire province and below to above normal precipitation in northern Manitoba and normal to above precipitation for southern and eastern Manitoba for the next 3 months (August, September, and October 2011).

**Precipitation**

Over the last 30 days, average precipitation was received in northern and western Manitoba but below average precipitation was received in much of southern and eastern Manitoba. Well below average precipitation was received in areas from Bisset south to the international border.

Over the last 90 days, above average precipitation was received in northern, western and southern Manitoba but below average precipitation was received in much of eastern Manitoba. Below average precipitation was received in areas from Bisset south to the international border and from Bisset north to Charron lake (Table 1 and Attachment 1).

**Stream and River Flows**

For July, flows are below average on a number of streams and rivers in northern and eastern Manitoba (Table 1 and Attachment 2).

**Northern Lake Levels**

For July, water levels are below average on a number of lakes in northern Manitoba (Attachment 3).

**Environment Canada's Three Month Outlook** (August, September and October, 2011)

The three month Environment Canada forecast is for above normal temperatures for the entire province and below to above normal precipitation in northern Manitoba and normal to above for southern and eastern Manitoba (Attachment 4).

**Potential Impacts**

There is a potential for forest fires and low river flows in the Winnipeg river basin and eastern tributaries of the Red river.

Due to the extremely dry conditions and high forest fire danger, Manitoba Conservation has banned all fires including all campfires for south eastern Manitoba. The eastern region includes the areas from the Manitoba border in the south to Bissett and Hollow Water in the north, and east of La Broquerie, Richer and the Brokenhead Ojibway First Nation and along the eastern edge of Lake Winnipeg to the Ontario border. This also includes all Whiteshell provincial parks, the North-West Angle Provincial Forest and Sandilands Provincial Forest.

**Table 1: Detail by Drainage Basin (Attachments: 1, 2, 3, 4 and 5)**

Basin	Indicators			
	1 month Precipitation (July 3, 2011-August 1, 2011)	3 month Precipitation (May 4 – August 1, 2011)	Major River Flow Conditions (Figure 2)	Lake Levels (Figure 3)
Red River	Below average	Below to above average	Above average except some small eastern tributaries.	-
Winnipeg River	Below average	Below average	Below median	-
Assiniboine River- Souris River	Below to above average depending on area of watershed	Above average	Above median	-
Lake Manitoba	Below to above average depending on area of watershed	Above average	Above median	Above median
Lake Winnipeg	Below to above average depending on area of watershed	Below to above average	Above median	Above median
Saskatchewan River	Above average	Above average	Above median	-
Nelson River	Above average	Below to above average	Below to above median	Below to above median
Hayes River	Above average	Below to above average	-	-
Churchill River	Above average	Below to above average	Below to above median	Below to above median
Seal River	Above average	Below to above average	Below median	-

**Note: Median is 50<sup>th</sup> percentile.**

## Acknowledgements

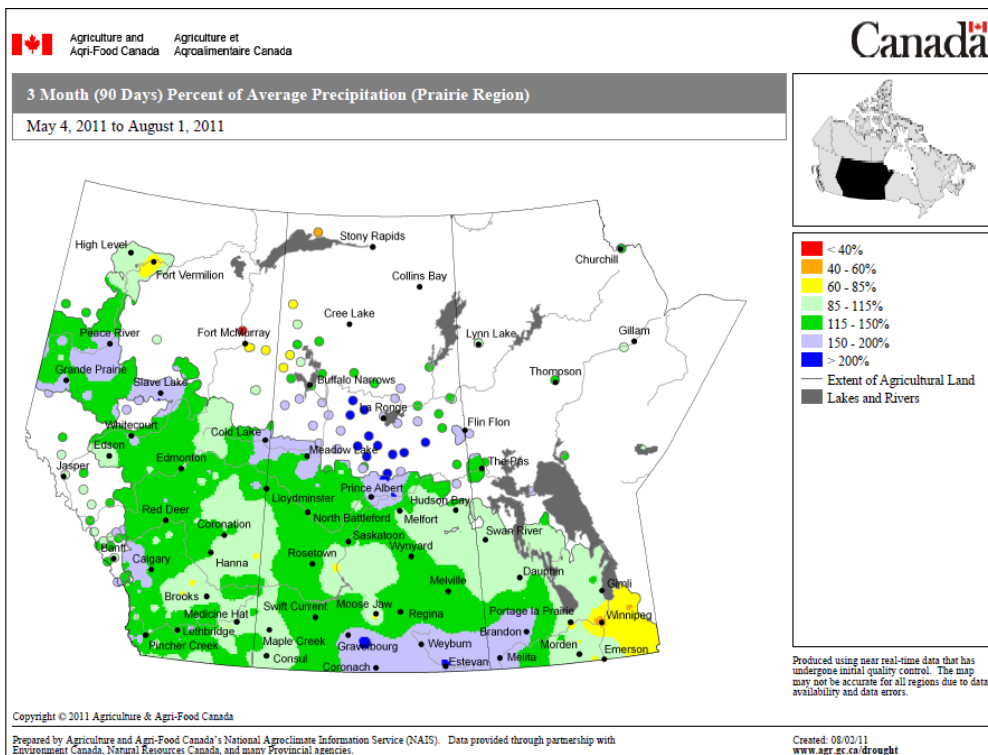
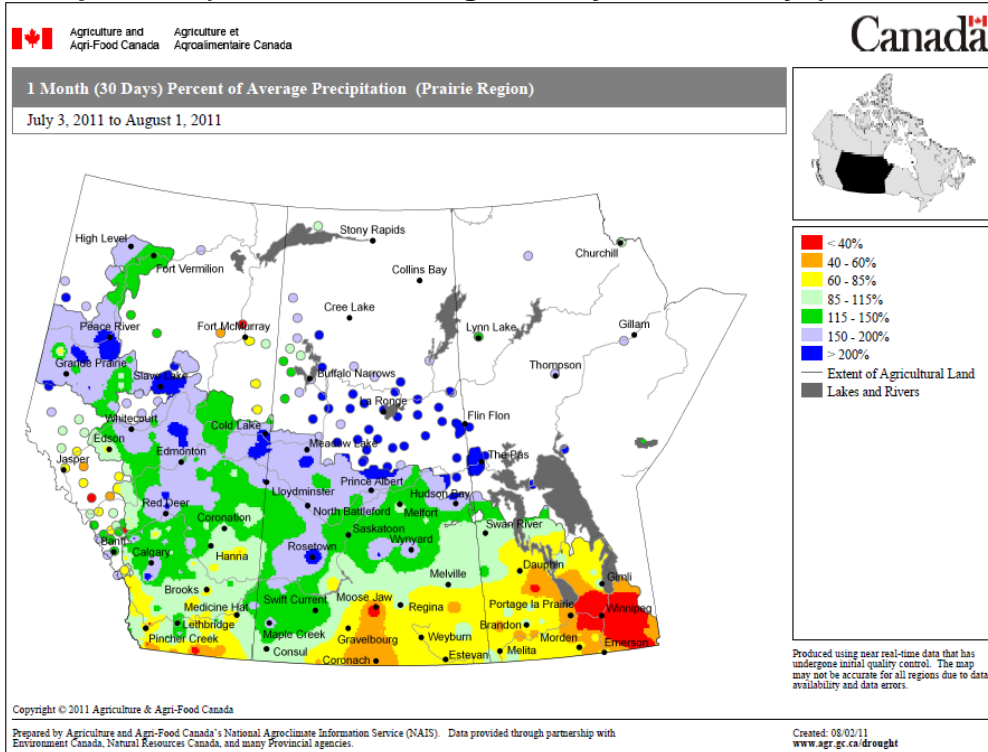
This report was prepared with information from the following sources which are gratefully acknowledged:

- Agriculture and Agri-food Canada (Drought watch); North America Drought Monitor:  
[http://www.agr.gc.ca/pfra/drought/mapscc\\_e.htm](http://www.agr.gc.ca/pfra/drought/mapscc_e.htm)  
[http://www.agr.gc.ca/pfra/drought/pr\\_e.htm](http://www.agr.gc.ca/pfra/drought/pr_e.htm)
  - Regional site: [30 and 90 precipitation](#)
  - National Site: [Palmer Drought](#) and [Standard Precipitation Indices](#)
- Manitoba Water Stewardship: Flow and Precipitation information:  
[http://www.gov.mb.ca/waterstewardship/floodinfo/forecasts/river\\_report2008-18-12.html](http://www.gov.mb.ca/waterstewardship/floodinfo/forecasts/river_report2008-18-12.html));[http://www.gov.mb.ca/waterstewardship/floodinfo/forecasts/Weekly\\_Flows\\_2011.pdf](http://www.gov.mb.ca/waterstewardship/floodinfo/forecasts/Weekly_Flows_2011.pdf)). <http://www.gov.mb.ca/waterstewardship/floodinfo/maps.html>
- Fire Hazard: <http://www.gov.mb.ca/conservation/fire/>
- Environment Canada 3 month climatic outlook:  
[http://weatheroffice.gc.ca/saisons/index\\_e.html](http://weatheroffice.gc.ca/saisons/index_e.html)
- Manitoba Conservation Fire Program

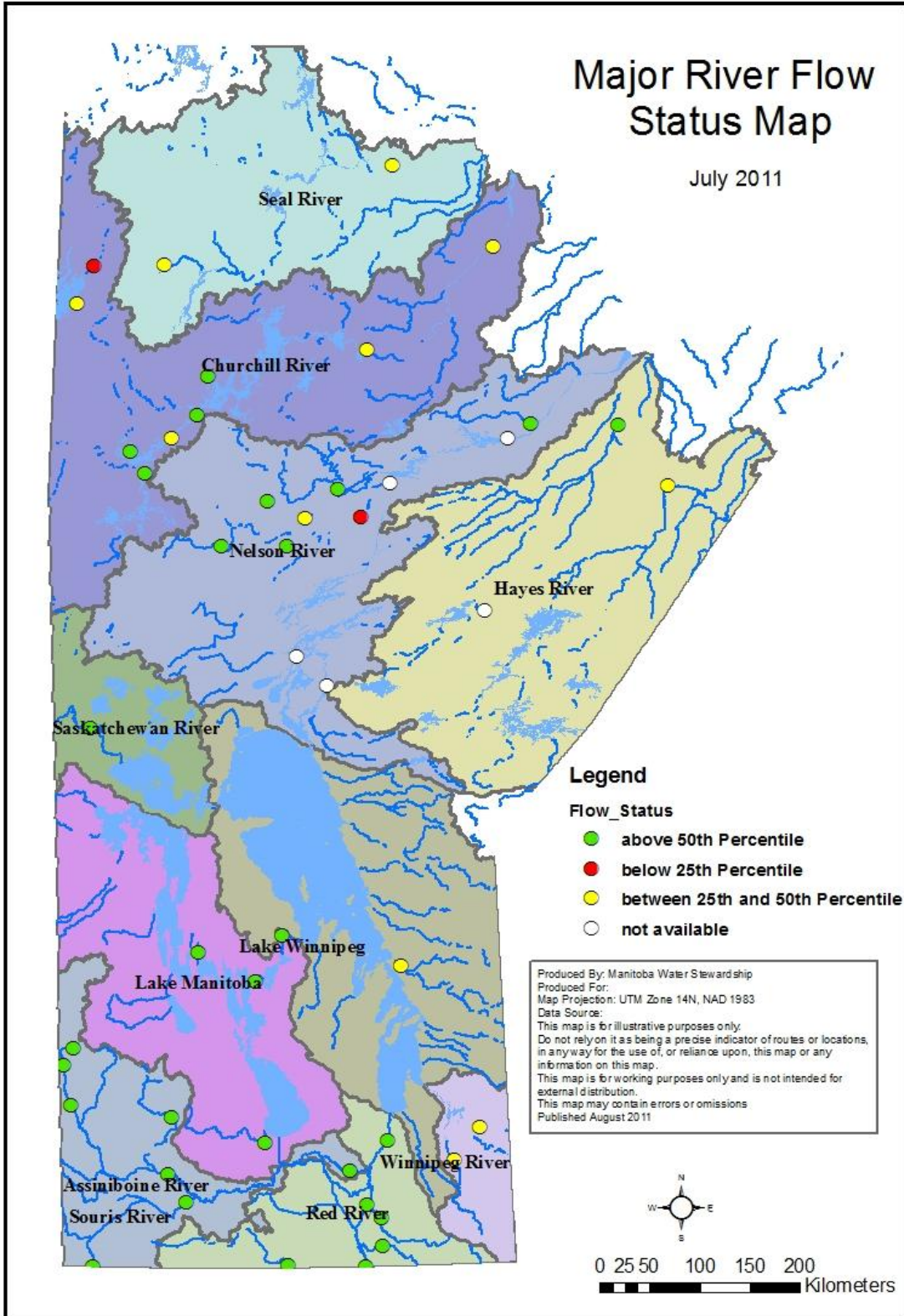
**For further information, please contact:** Abul Kashem, Surface Water Management Section, Manitoba Water Stewardship, 945-6397

# Attachments

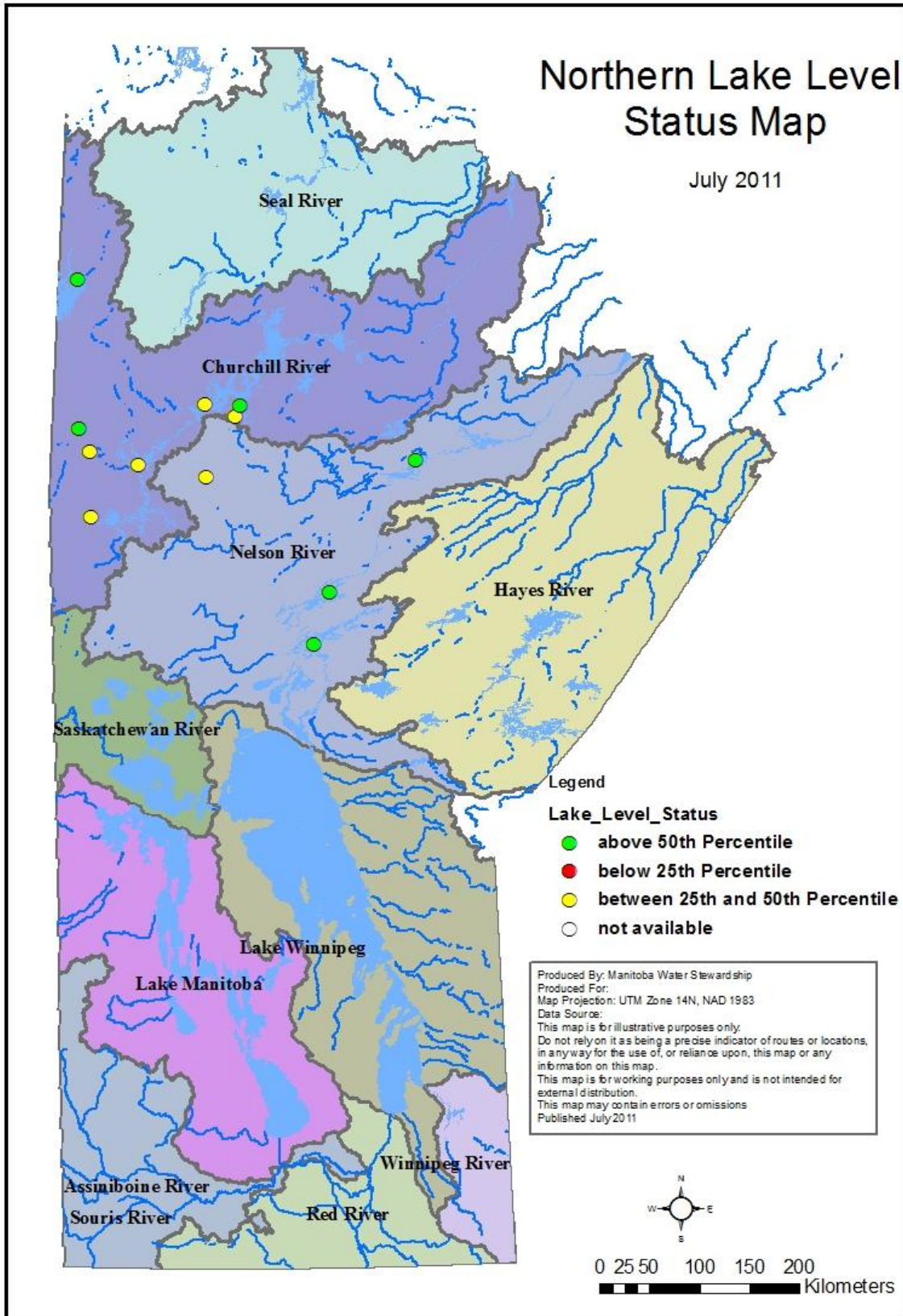
## 1. Precipitation (Percent of average:30 days and 90 days)



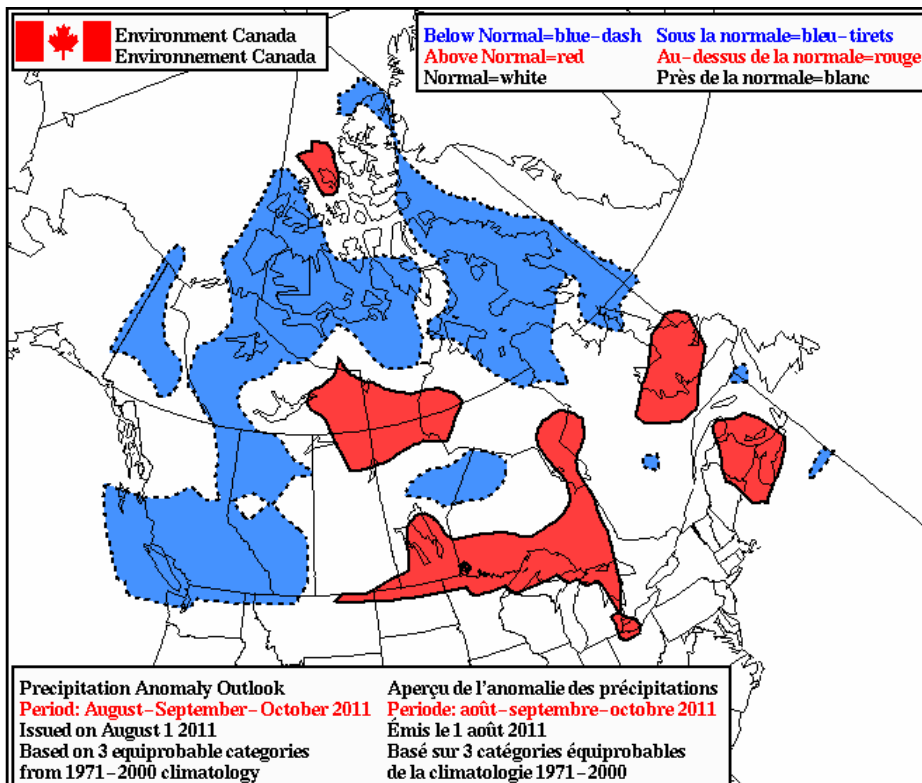
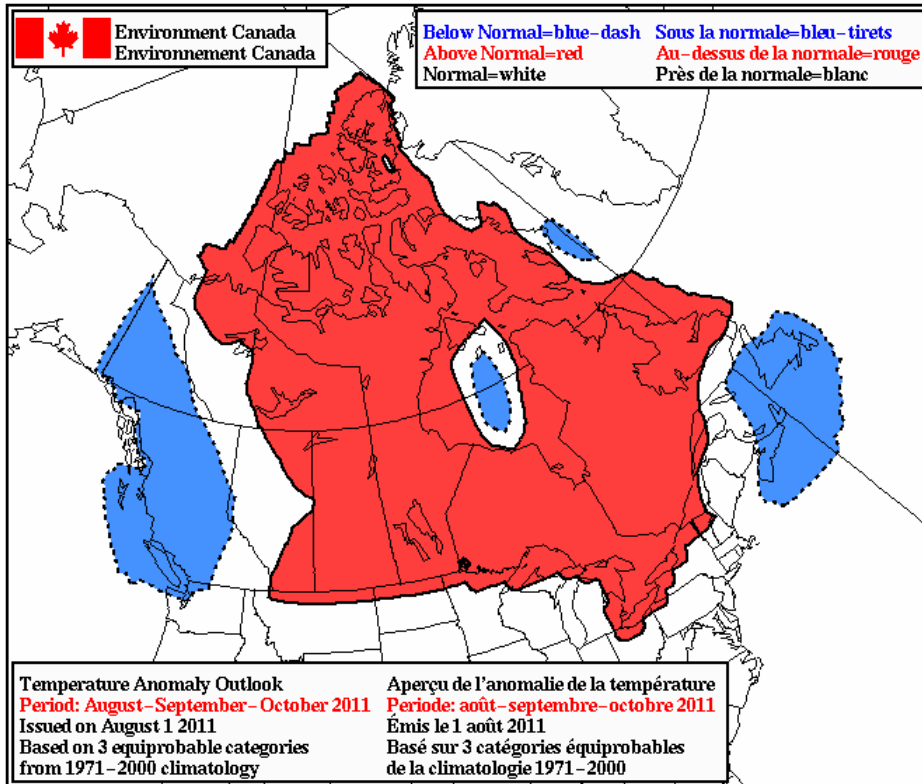
## 2. Major River Flow Status



### 3. Northern Lake Levels



#### 4. Environment Canada 3 Month Outlook





## 5. Major River Basins

