



## **Islandview South**

### **Grindstone Provincial Park**

#### **Getting There**

Located in the Hecla - Grindstone Provincial Park on the east shore of Grindstone Point about 155 km north of Winnipeg or 1 hour north of Gimli. Access is off Grindstone Road (gravel) which is about 6.5 km east of the PTH 8 and PR 234 junction. Hecla Island and Gull Harbour are about half an hour away. The Islandview South subdivision is accessed off Grindstone Road via Mountain Maple Lane. The access road is located approximately 27 km north of PTH 8.

#### **Location and Description of Subdivision**

The subdivision is along the eastern shore of Grindstone Point offering beautiful views of Manitoba's largest lake. There are lovely sandy beaches, picnic areas, boat launching and marina facilities available at the Little Grindstone Point Harbour as well as on Hecla Island. The subdivision design has provided a natural buffer space between the front lot lines and the lakeshore with an average lot size of approximately 1,350 m<sup>2</sup> (0.33 acres). Lot sizes may vary due to topographical limitations or other requirements.

#### **Services**

The subdivision has gravel road access and is serviced by Manitoba Hydro at the lot line. Manitoba Telecom Services (MTS) and local septic services are available. A liquid disposal site is located at Little Grindstone Point. Local services and amenities can be found in the Town of Riverton approximately 45 km south along PTH 8, or in the Town of Gimli approximately 1 hour south.

#### **Local District Contact Information:**

Riverton District Office  
Box 70, Riverton, MB ROC 2R0  
Ph: (204) 378-2945 Fax: (204) 378-5274



Grindstone Point  
Subdivisions

North Cliffs

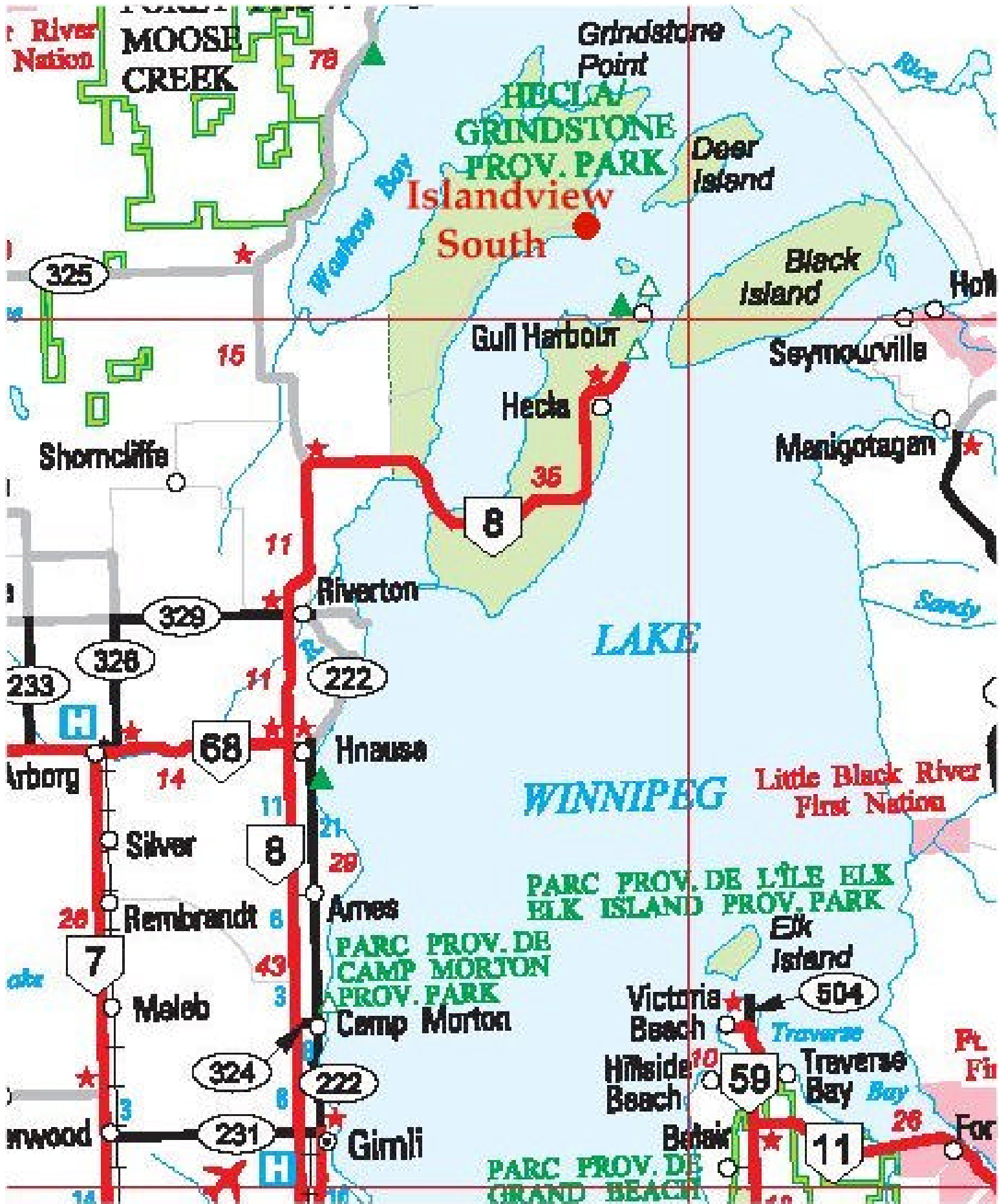
Island View  
North

Island View  
South

Whitesands

South Beach

Blacks Point



METRIC

PLAN OF SUBDIVISION  
 OF PART OF  
**FRACTIONAL S.E. 1/4 SEC. 16 AND FRACTIONAL  
 W. 1/2 SEC. 15, TP. 26, RGE. 6 E.P.M AND PART  
 OF GOVERNMENT ROAD ALLOWANCE (NOW CLOSED)**

MANITOBA

SCALE: 1:1000

18442  
 March 1980

18442

80-12552

Filed in the Office of the Director  
 of Surveys at Winnipeg this 10<sup>th</sup>  
 day of March A.D. 1980  
 as PLAN No. 18442

*James Baillie*  
 Director of Surveys

NOTES:  
 ALL DISTANCES ARE IN METRES AND DECIMALS THEREOF AND MAY BE CONVERTED TO FEET BY  
 MULTIPLYING BY 3.28084.  
 SURVEY MONUMENTS FOUND ON THE GROUND ARE DESCRIBED AND SHOWN THUS:   
 IRON POSTS 0.025 x 0.025 x 0.025 OF VARIOUS LENGTHS ARE PLANTED AT ALL POINTS SHOWN THUS:   
 IRON POSTS 0.015 x 0.015 x 0.015 OF VARIOUS LENGTHS ARE PLANTED AT ALL POINTS SHOWN THUS:   
 ALL PLANS REFERRED TO ARE ON RECORD AT THE WINNIPEG LAND TITLES OFFICE  
 LAND AFFECTED BY THE REGISTRATION OF THIS PLAN IS BORDERED THUS:

AFFIDAVIT:  
 I, JAMES EDWARD BAILLIE, OF THE CITY OF WINNIPEG, MANITOBA LAND SURVEYOR, MAKE OATH  
 AND SAY THAT I DID PERSONALLY SUPERINTEND THE SURVEY REPRESENTED BY THIS PLAN,  
 THAT THE SURVEY WAS MADE BETWEEN THE DATES OF JANUARY 18th TO FEBRUARY 28th, 1979  
 AND THAT THE SURVEY AND PLAN ARE CORRECT AND TRUE TO THE BEST OF MY KNOWLEDGE  
 AND BELIEF.  
*James Baillie*  
 M.L.S.

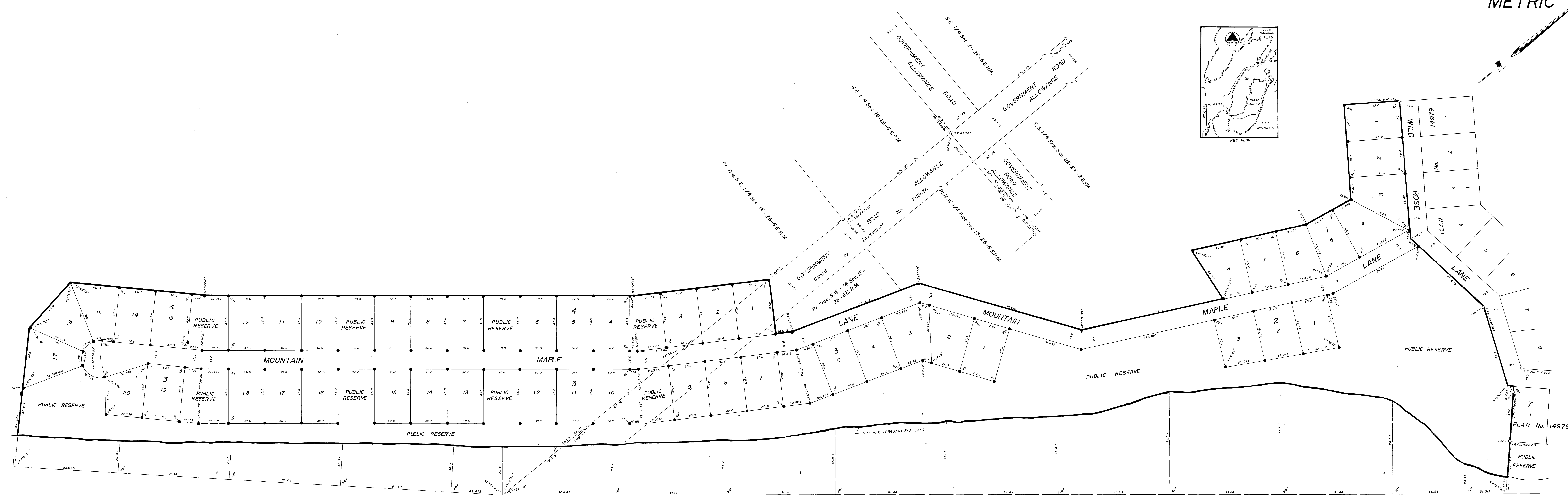
SWORN TO BEFORE ME  
 AT THE CITY OF WINNIPEG  
 THIS 11<sup>th</sup> DAY OF MARCH AD 1979  
*R. S. [Signature]*  
 A COMMISSIONER FOR OATHS IN AND FOR THE PROVINCE OF MANITOBA  
 MY COMMISSION EXPIRES OCTOBER 18th, 1979.

APPROVALS:  
 APPROVED AND CONFIRMED  
 THIS 11<sup>th</sup> DAY OF MARCH AD 1979  
*[Signature]*  
 DIRECTOR OF SURVEYS  
 APPROVED AS TO PLANNING  
 THIS 29<sup>th</sup> DAY OF JUNE AD 1979  
*[Signature]*  
 FOR MINISTER OF MINES, NATURAL RESOURCES  
 AND ENVIRONMENT  
 APPROVED  
 THIS 11<sup>th</sup> DAY OF JUNE AD 1979  
*[Signature]*  
 FOR MINISTER OF MINES, NATURAL RESOURCES AND  
 ENVIRONMENT  
 APPROVED  
 THIS 29<sup>th</sup> DAY OF FEBRUARY AD 1980  
*[Signature]*  
 FOR REGISTRAR - GENERAL

ENTERED AND REGISTERED IN THE WINNIPEG  
 LAND TITLES OFFICE THIS 10<sup>th</sup> DAY OF MARCH AD 1980  
 AS PLAN No. 18442  
*[Signature]*  
 DEPUTY DISTRICT REGISTRAR

THIS APPROVAL IS VALID FOR 12 MONTHS  
 UNLESS REGISTERED.  
 APPROVED  
 THIS 29<sup>th</sup> DAY OF JANUARY AD 1980  
*[Signature]*  
 EXAMINER OF SURVEYS  
 RE-APPROVED: \_\_\_\_\_  
 RE-APPROVED: \_\_\_\_\_

JAMES BAILLIE  
 LAND SURVEYOR & CIVIL ENGINEER  
 2-1479 BUFFALO PLACE  
 WINNIPEG, MANITOBA.



LAKE WINNIPEG