

File Name: P:\Projects\2012\12-2436-002\Dwg\Mech\12-2436-002-P01-P03.dwg - Tab: Model Plotted By: abagho 04/23/2013 [Tue 2:30pm] 24"x36"/PLOT_SCALE: 1"=1'

F-003
NANO FILTER
 1.9 L/S (30.3 USGPM) INLET
 1.26 L/S (20 USGPM) TREATED
 0.64 L/S (10 USGPM) WASTE

T-003
TANK
 13,640L
 ATMOSPHERIC

T-004
TANK
 13,640L
 ATMOSPHERIC

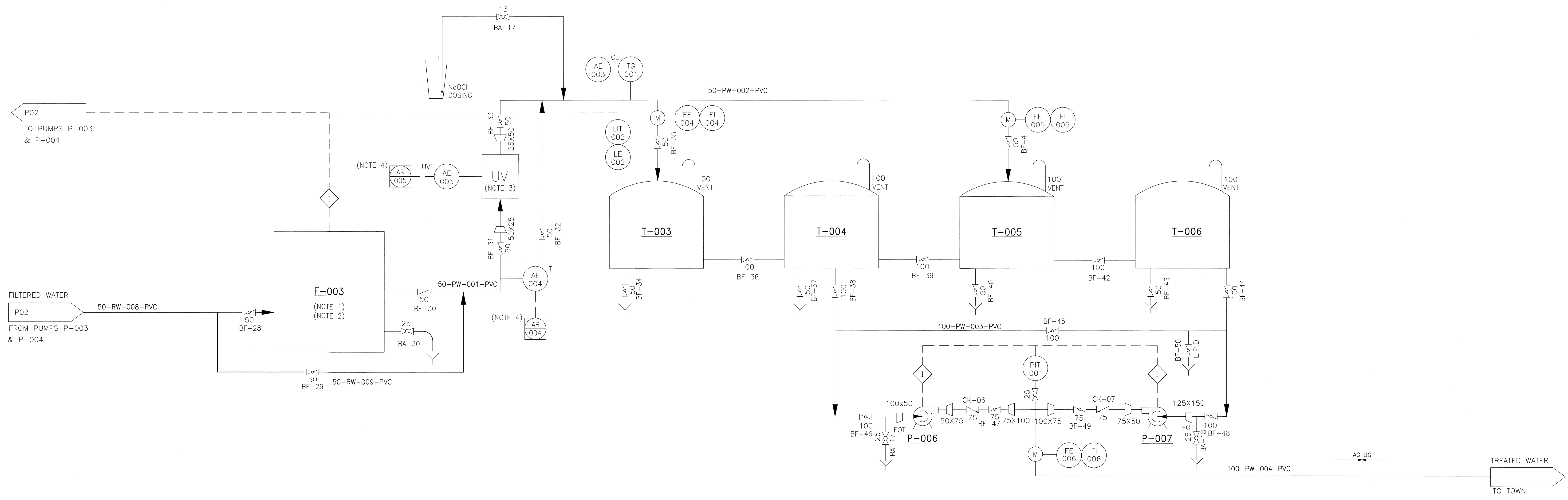
P-006
PUMP
 3 L/S @ 49m OF TDH, 5 HP
 600V/3 PHASE/60Hz

P-007
PUMP
 3 L/S @ 49m OF TDH, 5 HP
 600V/3 PHASE/60Hz

T-005
TANK
 13,640L
 ATMOSPHERIC

T-006
TANK
 13,640L
 ATMOSPHERIC

- NOTES:**
1. SEE NANO FILTRATION UNIT VENDER PROCESS AND INSTRUMENTATION DIAGRAM FOR DETAILS
 2. NANO FILTRATION SKID INCLUDES PH ADJUSTMENT AND CLEAN-IN-PLACE EQUIPMENT
 3. SEE UV LAMP VENDER DRAWINGS
 4. READINGS FROM TURBIDITY AND ULTRA VIOLET TRANSMITTANCE SENSORS ARE SENT TO A DATA RECORDER



NO.	13/04/23	ISSUED FOR REGULATORY	AMB
NO.	YY/MM/DD	DESCRIPTION	BY
REVISIONS / ISSUE			
CLIENT:	ARNASON INDUSTRIES CRANE RIVER CRANE RIVER, MANITOBA		
PROJECT:	WATER TREATMENT PLANT UPGRADES		
DWG. DESCRIPTION:	PROCESS AND INSTRUMENTATION DIAGRAM		
DESIGN BY:	AMB	DATE:	13/02/25
DESIGN CHECK:	AMB	DATE:	13/04/23
DRAWN BY:	MAB	DATE:	13/04/22
DWG CHECK:	AMB	DATE:	13/04/23
DWG. NO.	12-2436-002 P03		REV:
			0

APEGM
 Certificate of Authorization
 KGS Group
 No. 245 Date: 13/04/23

ENG. STAMP

 A.M.S. BORN
 Member
 25192
 REGISTERED PROFESSIONAL ENGINEER

KGS GROUP
 CONSULTING ENGINEERS