

**APPENDIX A**

**KEYYASK TRANSMISSION MAP FOLIO**



### Keeyask Transmission Project

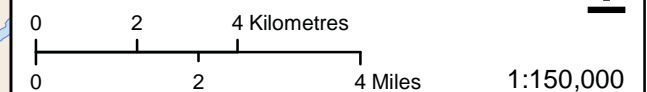
- Preferred Project Infrastructure**
- Generation Outlet Lines (200m ROW)
  - Construction Power Line (KN36) (60m ROW)
  - Construction Power Line (Temporary) (60m ROW)
  - Unit Lines (265m ROW)
  - Construction Power Station
  - Keeyask Switching Station
  - Project Study Area

- Infrastructure**
- Converter Station
  - Generating Station (Proposed)
  - Generating Station
  - Bipole I and II (Existing 500 kV DC Line)
  - Transmission Line
  - South Access Road (Proposed)
  - North Access Road

- Map Index**
- 1:20,000 Map Grid Index

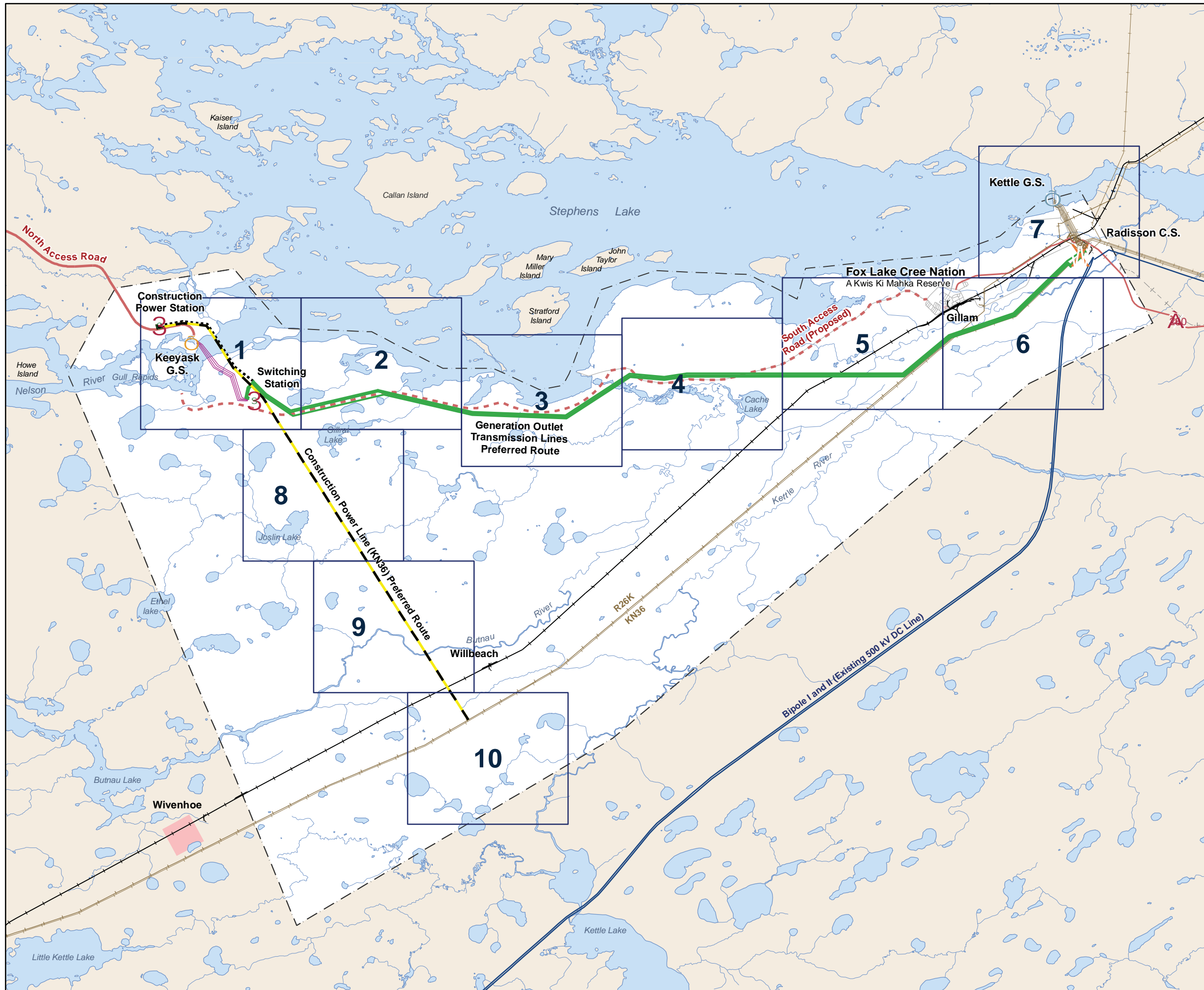
- Landbase**
- Community
  - Provincial Road
  - Municipal Road
  - Active Railway
  - Abandoned Railway
  - Watercourse
  - Waterbody
  - First Nation

Coordinate System: UTM Zone 15N NAD83  
 Data Source: MBHydro, ProvMB, NRCAN  
 Date Created: October 11, 2012



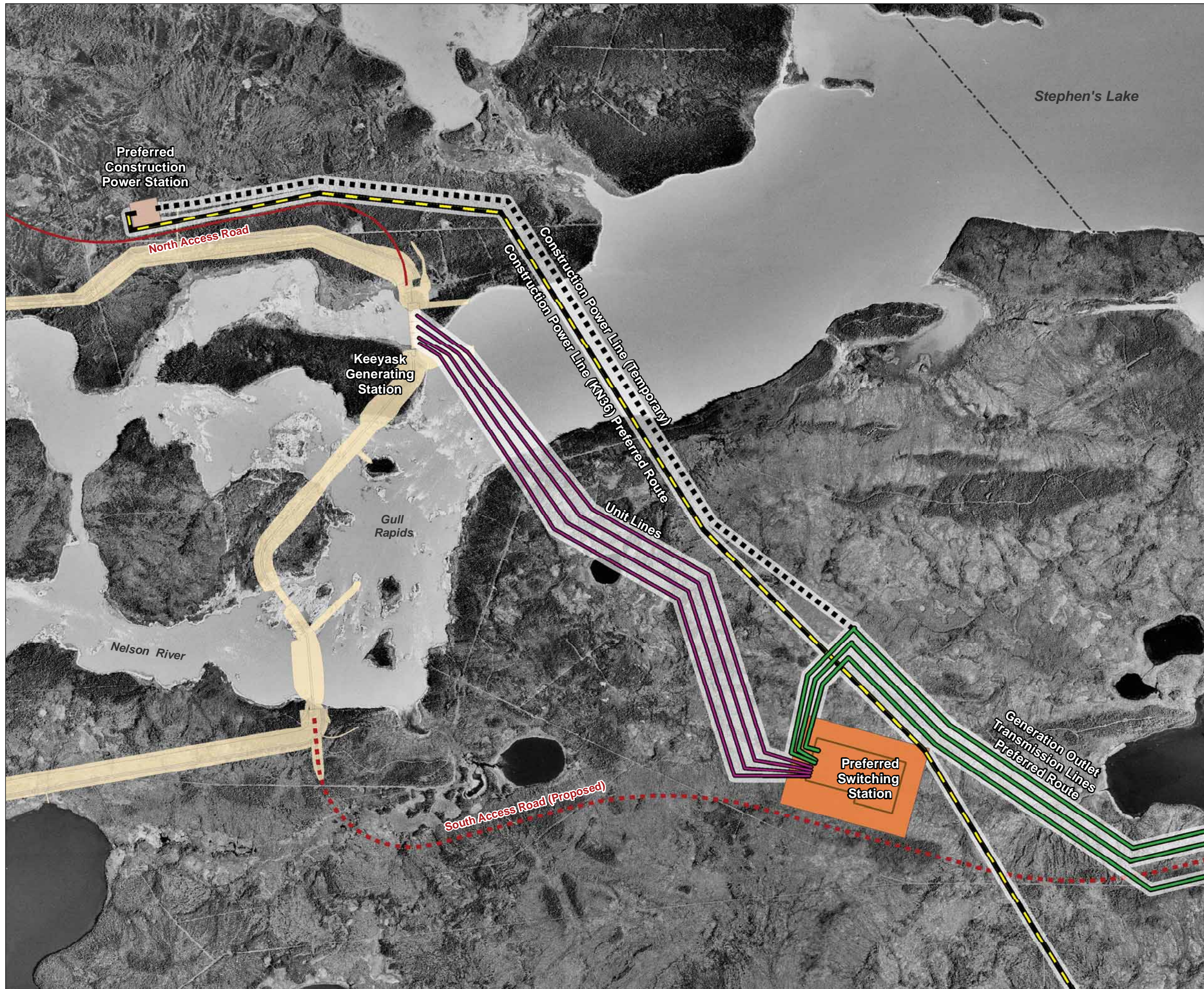
### Preferred Routes and Sites Map Index

*Draft: For Discussion Purposes Only*





## Keyask Transmission Project

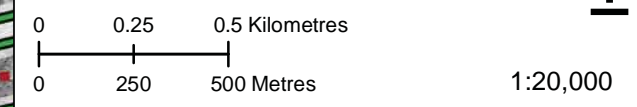


- Preferred Project Infrastructure**
- Generation Outlet Lines (200m ROW)
  - Construction Power Line (KN36) (60m ROW)
  - Construction Power Line (Temporary) (60m ROW)
  - Unit Lines (265m ROW)
  - Construction Power Station Site
  - Keyask Switching Station Site
  - Project Study Area

- Infrastructure**
- Generating Station
  - Bipole I and II (Existing 500 kV DC Line)
  - Transmission Line
  - South Access Road (Proposed)
  - North Access Road
  - Converter Station
  - Keyask Generation Infrastructure

- Landbase**
- Community
  - Provincial Road
  - Municipal Road
  - Active Railway
  - Abandoned Railway
  - Watercourse
  - Waterbody
  - First Nation

Coordinate System: UTM Zone 15N NAD83  
 Data Source: MBHydro, ProvMB, NRCAN  
 Date Created: October 11, 2012



## Preferred Routes and Sites

### Map Folio



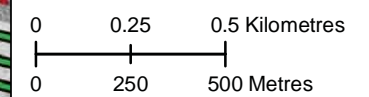
## Keeyask Transmission Project

- Preferred Project Infrastructure**
- Generation Outlet Lines (200m ROW)
  - Construction Power Line (KN36) (60m ROW)
  - Construction Power Line (Temporary) (60m ROW)
  - Unit Lines (265m ROW)
  - Construction Power Station Site
  - Keeyask Switching Station Site
  - Project Study Area

- Infrastructure**
- Generating Station
  - Bipole I and II (Existing 500 kV DC Line)
  - Transmission Line
  - South Access Road (Proposed)
  - North Access Road
  - Converter Station
  - Keeyask Generation Infrastructure

- Landbase**
- Community
  - Provincial Road
  - Municipal Road
  - Active Railway
  - Abandoned Railway
  - Watercourse
  - Waterbody
  - First Nation

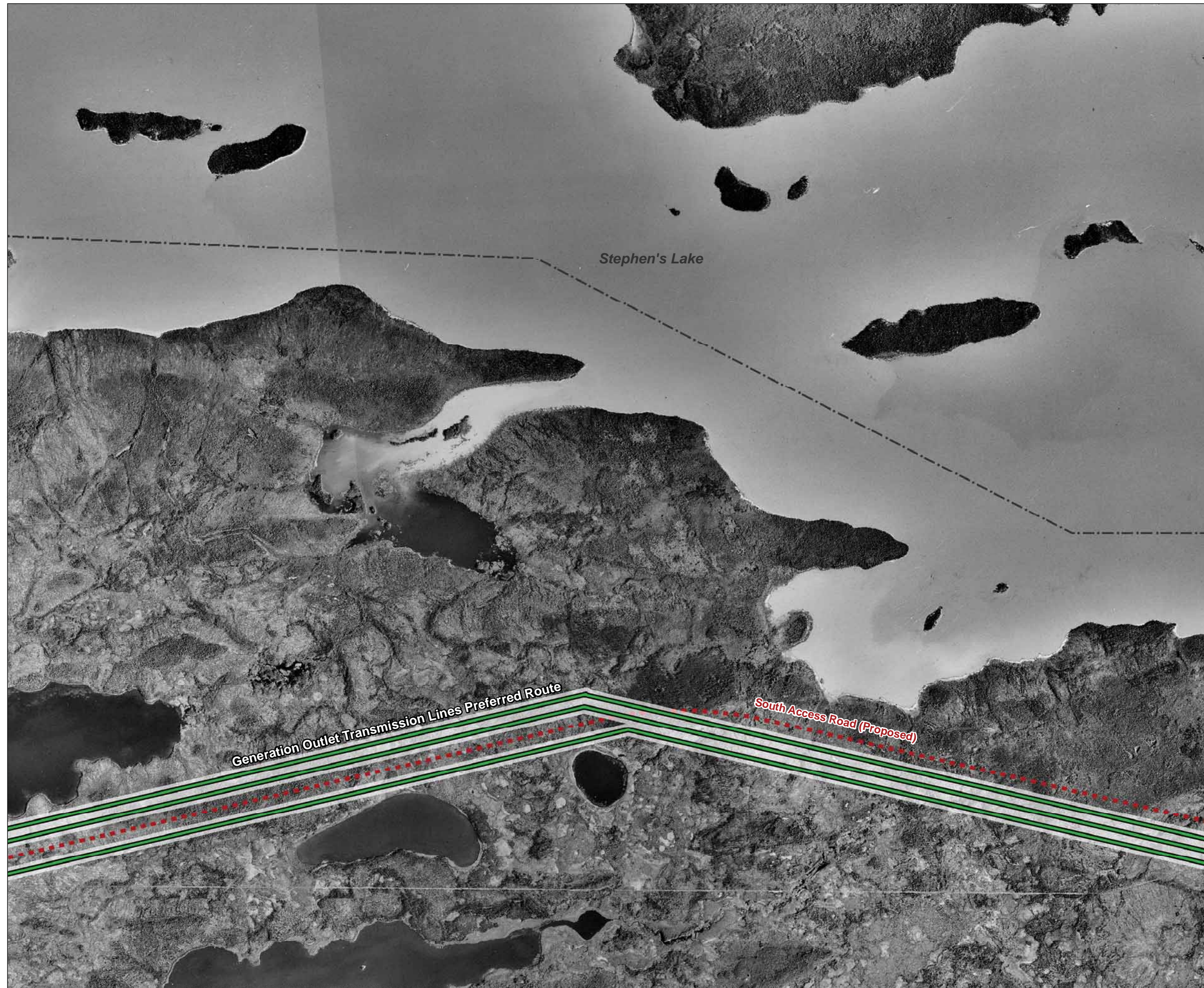
Coordinate System: UTM Zone 15N NAD83  
 Data Source: MBHydro, ProvMB, NRCAN  
 Date Created: October 11, 2012



1:20,000



## Preferred Routes and Sites Map Folio







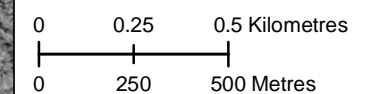
## Keeyask Transmission Project

- Preferred Project Infrastructure**
- Generation Outlet Lines (200m ROW)
  - Construction Power Line (KN36) (60m ROW)
  - Construction Power Line (Temporary) (60m ROW)
  - Unit Lines (265m ROW)
  - Construction Power Station Site
  - Keeyask Switching Station Site
  - Project Study Area

- Infrastructure**
- Generating Station
  - Bipole I and II (Existing 500 kV DC Line)
  - Transmission Line
  - South Access Road (Proposed)
  - North Access Road
  - Converter Station
  - Keeyask Generation Infrastructure

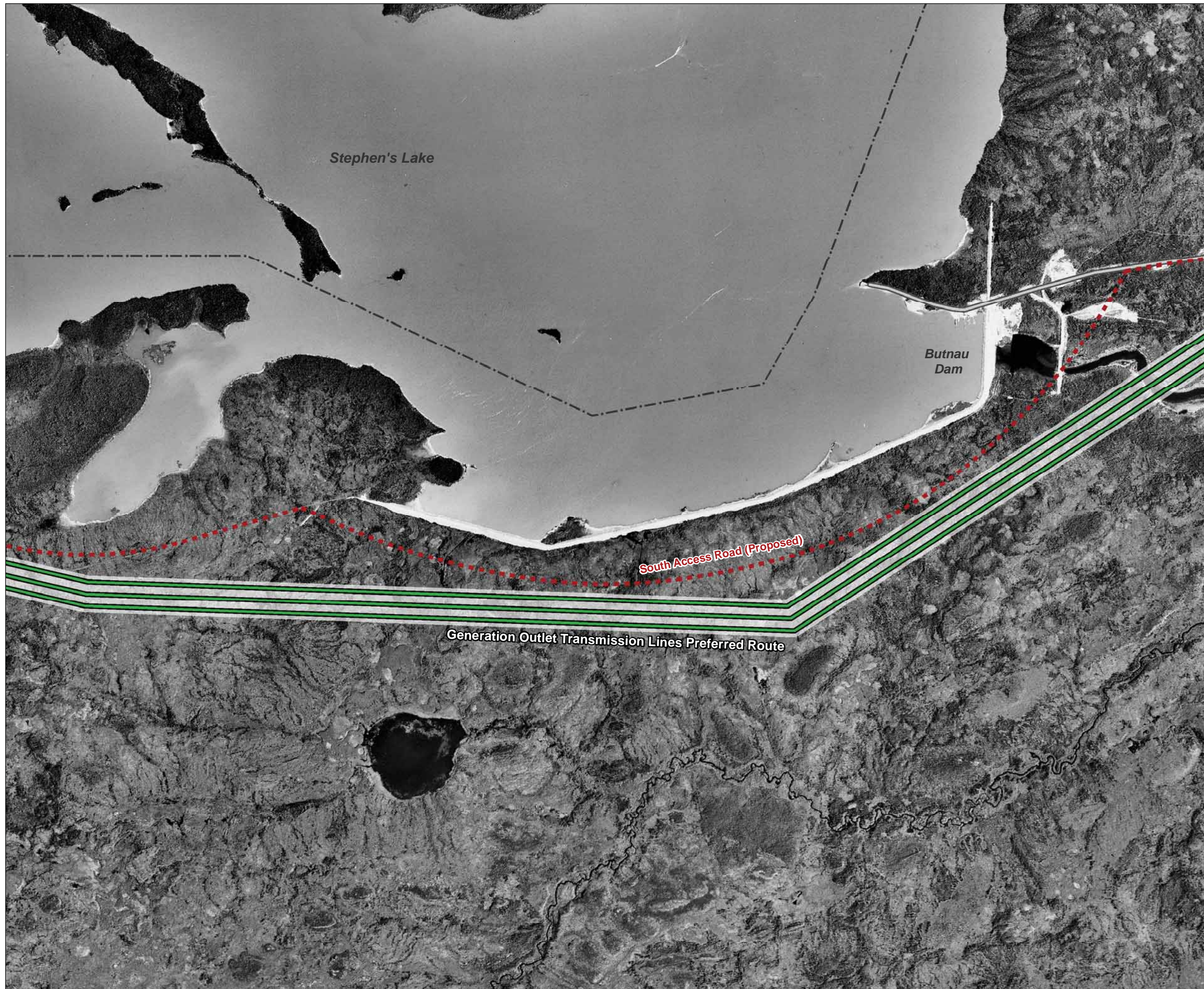
- Landbase**
- Community
  - Provincial Road
  - Municipal Road
  - Active Railway
  - Abandoned Railway
  - Watercourse
  - Waterbody
  - First Nation

Coordinate System: UTM Zone 15N NAD83  
 Data Source: MBHydro, ProvMB, NRCAN  
 Date Created: October 11, 2012



1:20,000

## Preferred Routes and Sites Map Folio





## Keeyask Transmission Project

- Preferred Project Infrastructure**
- Generation Outlet Lines (200m ROW)
  - Construction Power Line (KN36) (60m ROW)
  - Construction Power Line (Temporary) (60m ROW)
  - Unit Lines (265m ROW)
  - Construction Power Station Site
  - Keeyask Switching Station Site
  - Project Study Area

- Infrastructure**
- Generating Station
  - Bipole I and II (Existing 500 kV DC Line)
  - Transmission Line
  - South Access Road (Proposed)
  - North Access Road
  - Converter Station
  - Keeyask Generation Infrastructure

- Landbase**
- Community
  - Provincial Road
  - Municipal Road
  - Active Railway
  - Abandoned Railway
  - Watercourse
  - Waterbody
  - First Nation

Coordinate System: UTM Zone 15N NAD83  
 Data Source: MBHydro, ProvMB, NRCAN  
 Date Created: October 11, 2012

0 0.25 0.5 Kilometres  
 0 250 500 Metres

1:20,000

## Preferred Routes and Sites Map Folio

Generation Outlet Transmission Lines Preferred Route

South Access Road (Proposed)

Cache Lake



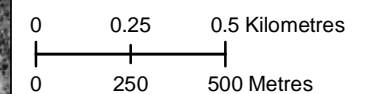
## Keeyask Transmission Project

- Preferred Project Infrastructure**
- Generation Outlet Lines (200m ROW)
  - Construction Power Line (KN36) (60m ROW)
  - Construction Power Line (Temporary) (60m ROW)
  - Unit Lines (265m ROW)
  - Construction Power Station Site
  - Keeyask Switching Station Site
  - Project Study Area

- Infrastructure**
- Generating Station
  - Bipole I and II (Existing 500 kV DC Line)
  - Transmission Line
  - South Access Road (Proposed)
  - North Access Road
  - Converter Station
  - Keeyask Generation Infrastructure

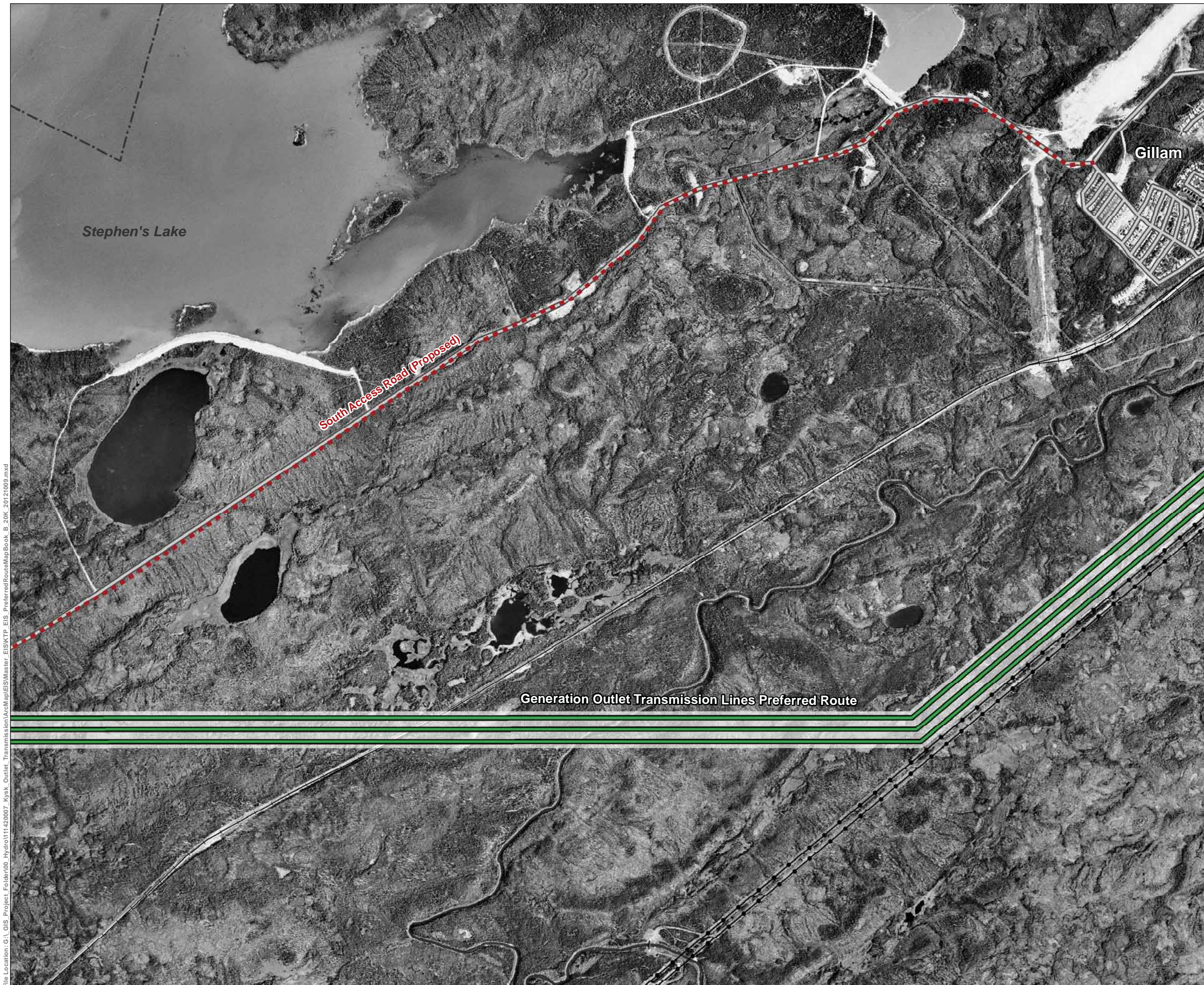
- Landbase**
- Community
  - Provincial Road
  - Municipal Road
  - Active Railway
  - Abandoned Railway
  - Watercourse
  - Waterbody
  - First Nation

Coordinate System: UTM Zone 15N NAD83  
 Data Source: MBHydro, ProvMB, NRCAN  
 Date Created: October 11, 2012



1:20,000

## Preferred Routes and Sites Map Folio



File Location: G:\GIS\Project\_Folder\00\_Hydro\111420007\_Keeyask\_Outlet\_Transmission\ArcMap\Map\MapBook\_B\_20K\_20121009.mxd



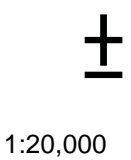
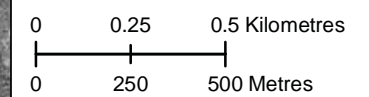
## Keeyask Transmission Project

- Preferred Project Infrastructure**
- Generation Outlet Lines (200m ROW)
  - Construction Power Line (KN36) (60m ROW)
  - Construction Power Line (Temporary) (60m ROW)
  - Unit Lines (265m ROW)
  - Construction Power Station Site
  - Keeyask Switching Station Site
  - Project Study Area

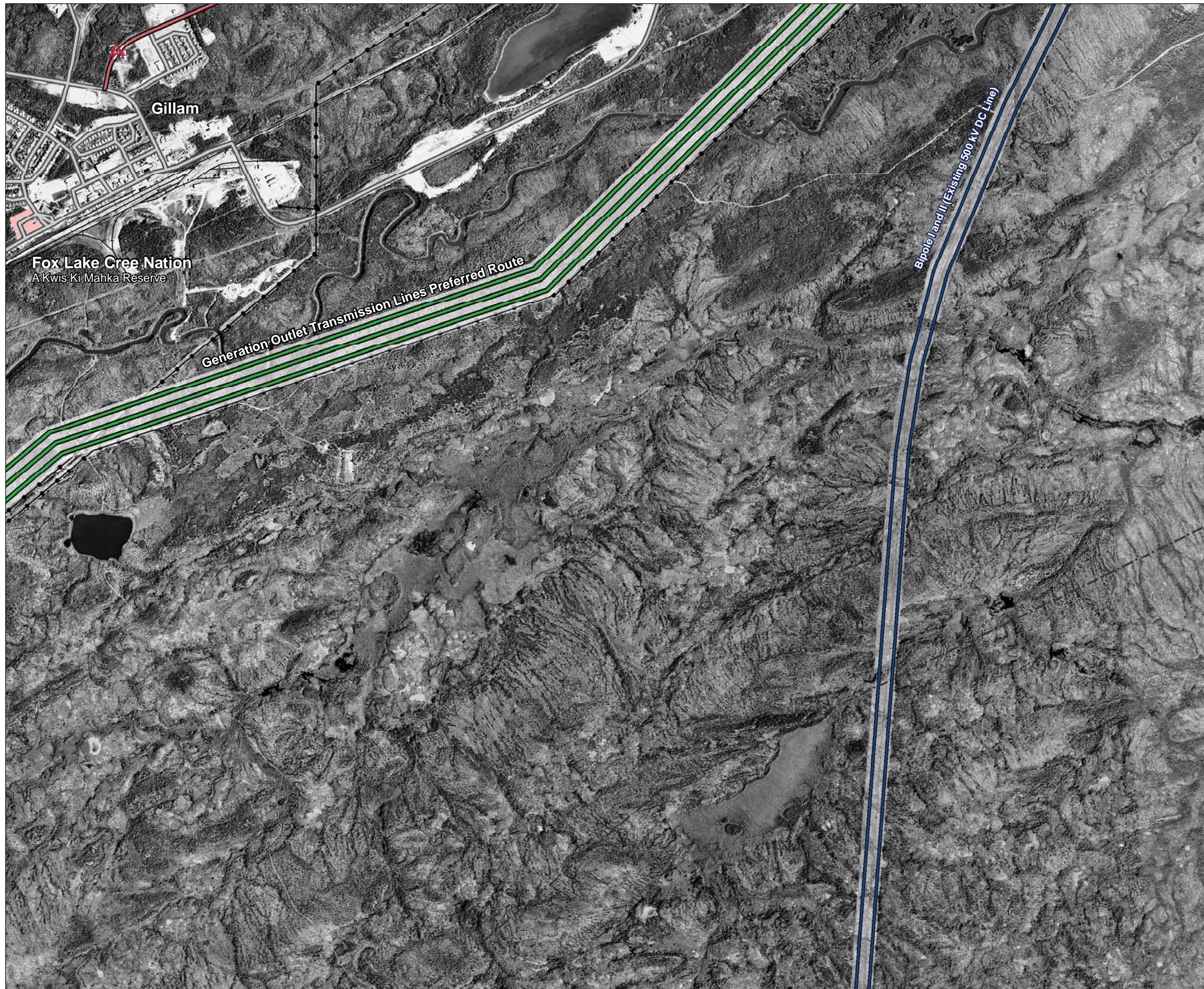
- Infrastructure**
- Generating Station
  - Bipole I and II (Existing 500 kV DC Line)
  - Transmission Line
  - South Access Road (Proposed)
  - North Access Road
  - Converter Station
  - Keeyask Generation Infrastructure

- Landbase**
- Community
  - Provincial Road
  - Municipal Road
  - Active Railway
  - Abandoned Railway
  - Watercourse
  - Waterbody
  - First Nation

Coordinate System: UTM Zone 15N NAD83  
 Data Source: MBHydro, ProvMB, NRCAN  
 Date Created: October 11, 2012



## Preferred Routes and Sites Map Folio







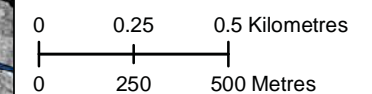
## Keeyask Transmission Project

- Preferred Project Infrastructure**
- Generation Outlet Lines (200m ROW)
  - Construction Power Line (KN36) (60m ROW)
  - Construction Power Line (Temporary) (60m ROW)
  - Unit Lines (265m ROW)
  - Construction Power Station Site
  - Keeyask Switching Station Site
  - Project Study Area

- Infrastructure**
- Generating Station
  - Bipole I and II (Existing 500 kV DC Line)
  - Transmission Line
  - South Access Road (Proposed)
  - North Access Road
  - Converter Station
  - Keeyask Generation Infrastructure

- Landbase**
- Community
  - Provincial Road
  - Municipal Road
  - Active Railway
  - Abandoned Railway
  - Watercourse
  - Waterbody
  - First Nation

Coordinate System: UTM Zone 15N NAD83  
 Data Source: MBHydro, ProvMB, NRCAN  
 Date Created: October 11, 2012



1:20,000



## Preferred Routes and Sites Map Folio





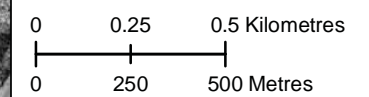
## Keeyask Transmission Project

- Preferred Project Infrastructure**
- Generation Outlet Lines (200m ROW)
  - Construction Power Line (KN36) (60m ROW)
  - Construction Power Line (Temporary) (60m ROW)
  - Unit Lines (265m ROW)
  - Construction Power Station Site
  - Keeyask Switching Station Site
  - Project Study Area

- Infrastructure**
- Generating Station
  - Bipole I and II (Existing 500 kV DC Line)
  - Transmission Line
  - South Access Road (Proposed)
  - North Access Road
  - Converter Station
  - Keeyask Generation Infrastructure

- Landbase**
- Community
  - Provincial Road
  - Municipal Road
  - Active Railway
  - Abandoned Railway
  - Watercourse
  - Waterbody
  - First Nation

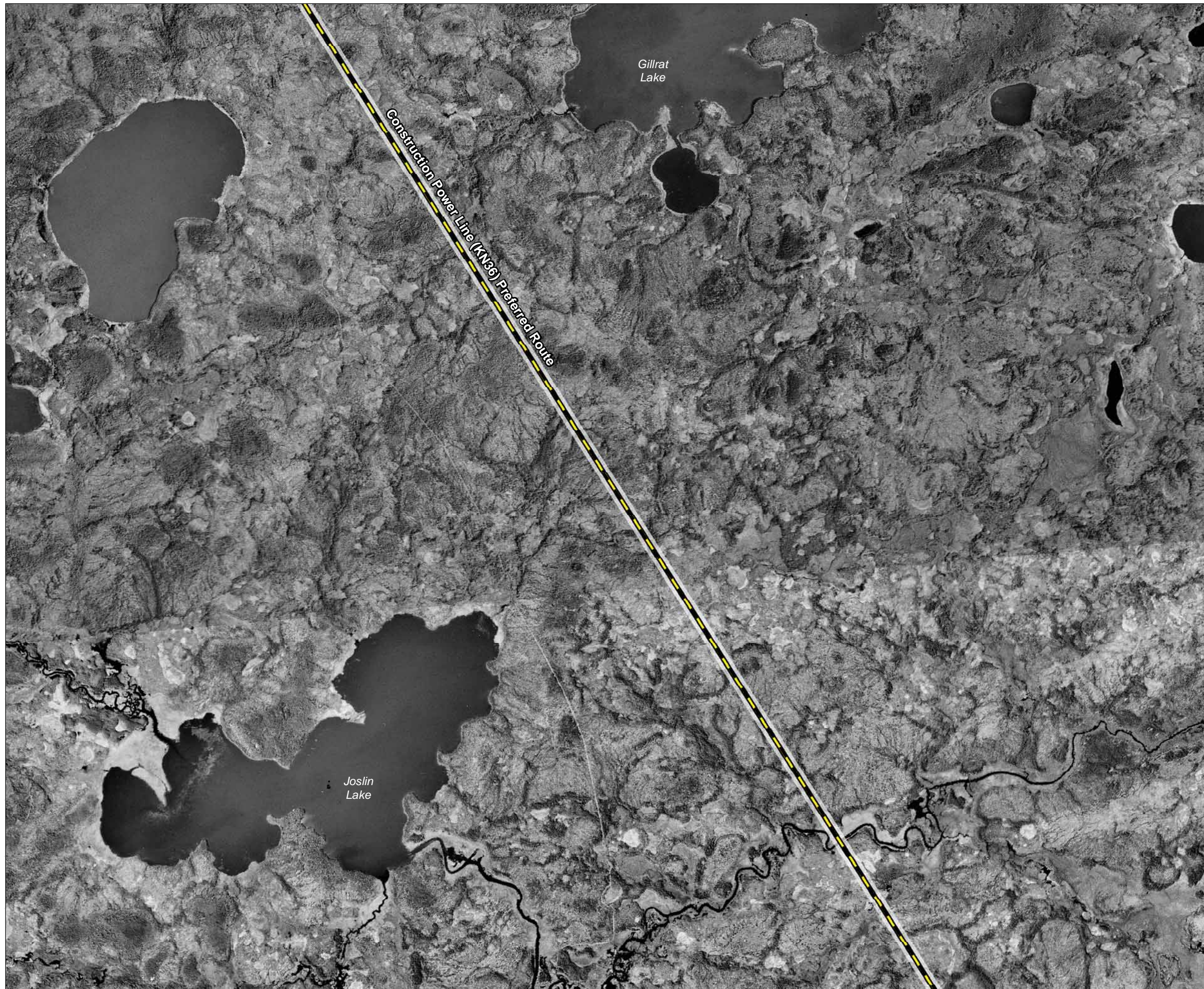
Coordinate System: UTM Zone 15N NAD83  
 Data Source: MBHydro, ProvMB, NRCAN  
 Date Created: October 11, 2012



1:20,000



## Preferred Routes and Sites Map Folio





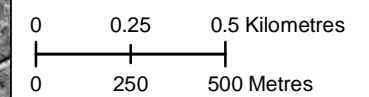
## Keeyask Transmission Project

- Preferred Project Infrastructure**
- Generation Outlet Lines (200m ROW)
  - Construction Power Line (KN36) (60m ROW)
  - Construction Power Line (Temporary) (60m ROW)
  - Unit Lines (265m ROW)
  - Construction Power Station Site
  - Keeyask Switching Station Site
  - Project Study Area

- Infrastructure**
- Generating Station
  - Bipole I and II (Existing 500 kV DC Line)
  - Transmission Line
  - South Access Road (Proposed)
  - North Access Road
  - Converter Station
  - Keeyask Generation Infrastructure

- Landbase**
- Community
  - Provincial Road
  - Municipal Road
  - Active Railway
  - Abandoned Railway
  - Watercourse
  - Waterbody
  - First Nation

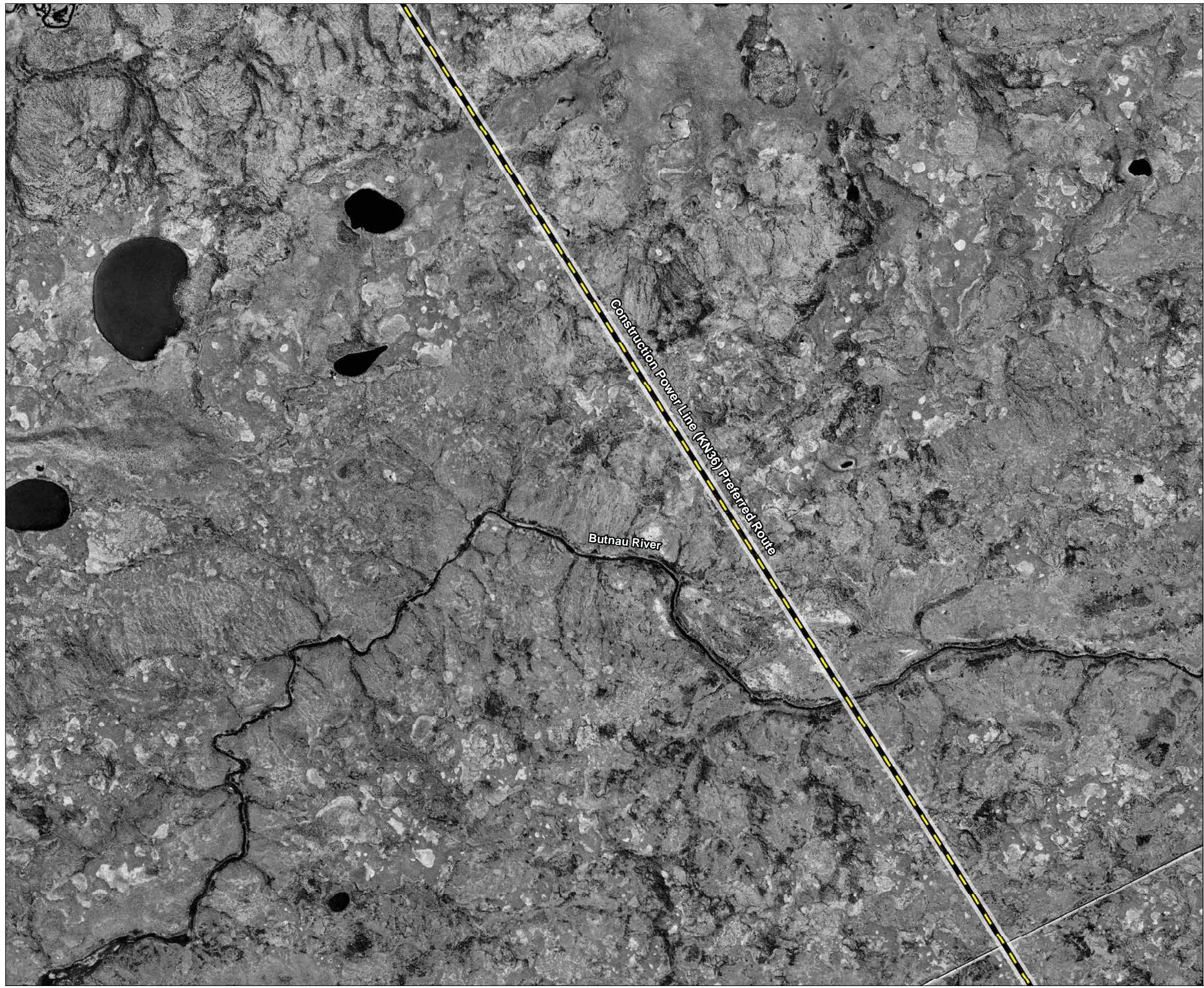
Coordinate System: UTM Zone 15N NAD83  
 Data Source: MBHydro, ProvMB, NRCAN  
 Date Created: October 11, 2012



1:20,000



## Preferred Routes and Sites Map Folio





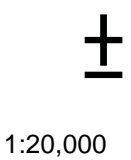
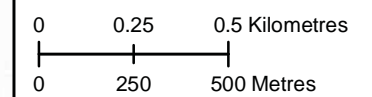
## Keeyask Transmission Project

- Preferred Project Infrastructure**
- Generation Outlet Transmission Lines (200m ROW)
  - Construction Power Line (KN36) (60m ROW)
  - Construction Power Line (Temporary) (60m ROW)
  - Unit Lines (265m ROW)
  - Construction Power Station Site
  - Switching Station Site
  - Project Study Area

- Infrastructure**
- Generating Station
  - Bipole I and II (Existing 500 kV DC Line)
  - Transmission Line
  - South Access Road (Proposed)
  - North Access Road
  - Converter Station
  - Keeyask Generation Infrastructure

- Landbase**
- Community
  - Provincial Road
  - Municipal Road
  - Active Railway
  - Abandoned Railway
  - Watercourse
  - Waterbody
  - First Nation

Coordinate System: UTM Zone 15N NAD83  
 Data Source: MBHydro, ProvMB, NRCAN  
 Date Created: October 11, 2012



## Preferred Routes and Sites Map Folio

