

This drawing has been prepared for the use of AECOM's client and may not be used, reproduced, or relied upon by third parties, except as agreed by AECOM and its client, as required by law or for use by governmental reviewing agencies. AECOM accepts no responsibility, and denies any liability whatsoever, to any party that modifies this drawing without AECOM's express written consent. All measurements must be obtained from stated dimensions.

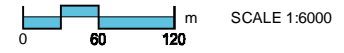
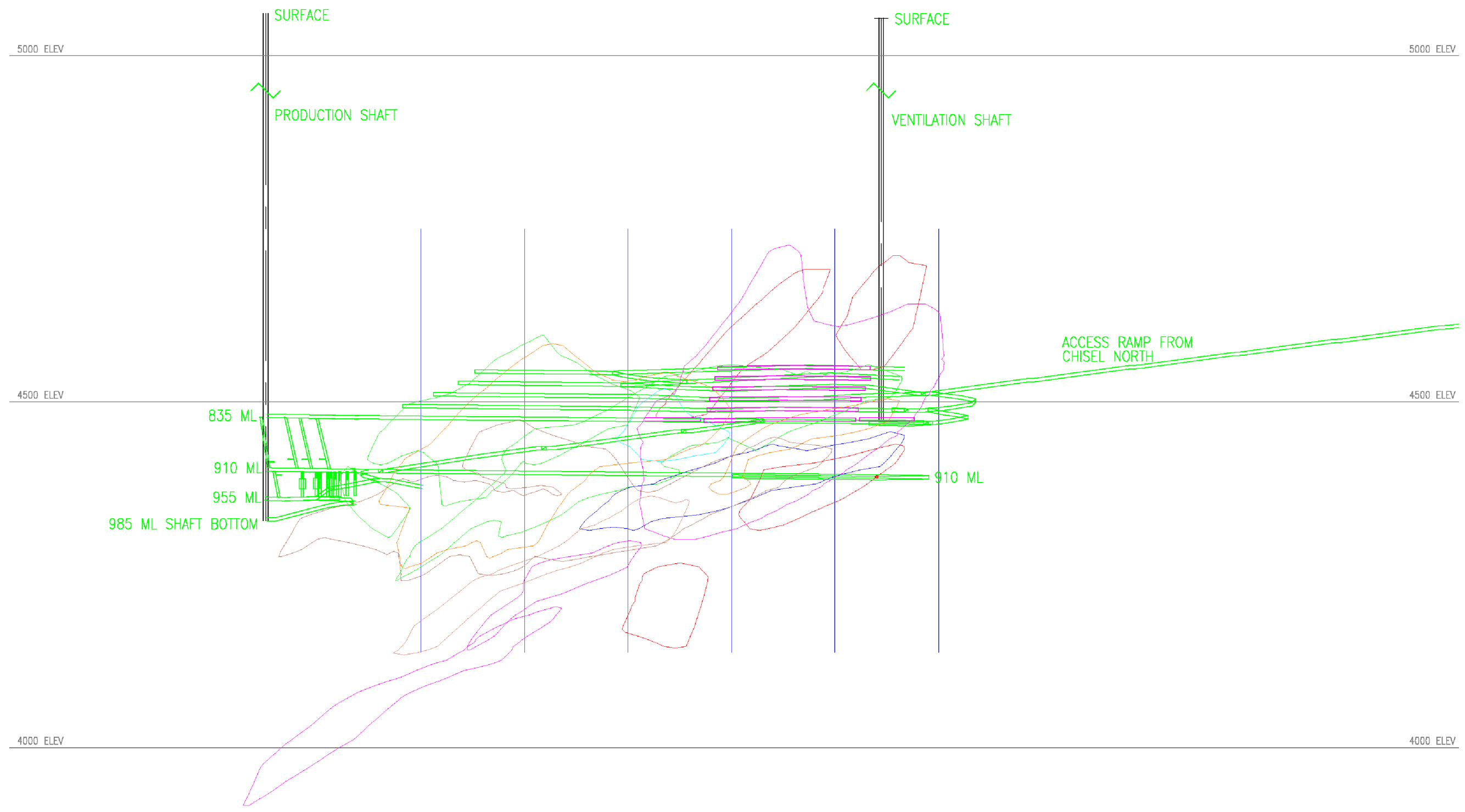


IMAGE PROVIDED BY: HBMS  
IMAGE DATED: 2012/02/27

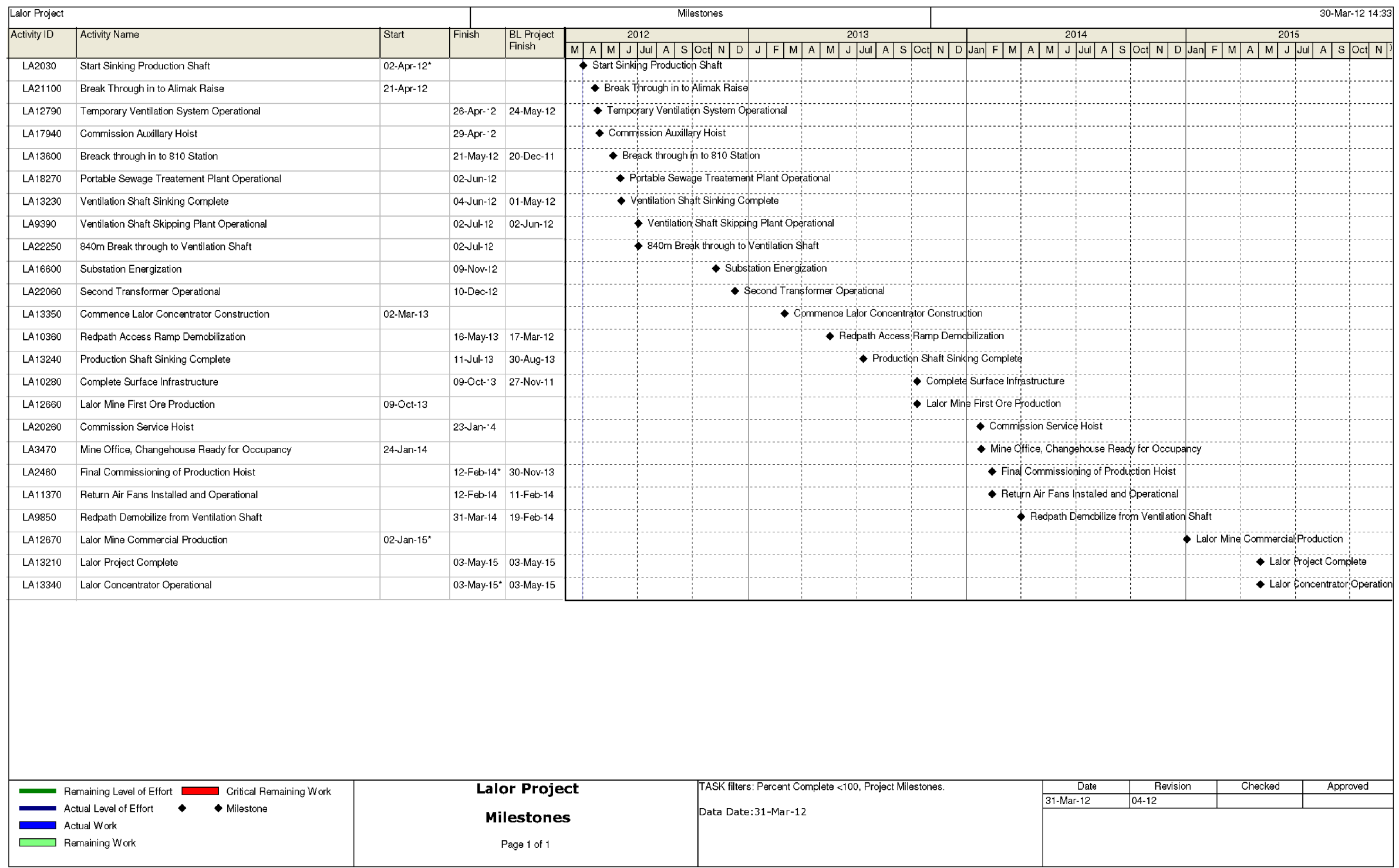
Hudson Bay Mining and Smelting Co., Limited  
Lalor Mine Environment Act Proposal

### Conceptual Mine Schematic



Figure - 12

This drawing has been prepared for the use of AECOM's client and may not be used, reproduced or relied upon by third parties, except as agreed by AECOM and its client, as required by law or for use by governmental reviewing agencies. AECOM accepts no responsibility, and denies any liability whatsoever, to any party that modifies this drawing without AECOM's express written consent. All measurements must be obtained from stated dimensions.



Hudson Bay Mining and Smelting Co., Limited  
Lalor Mine Environment Act Proposal

**Project Schedule**

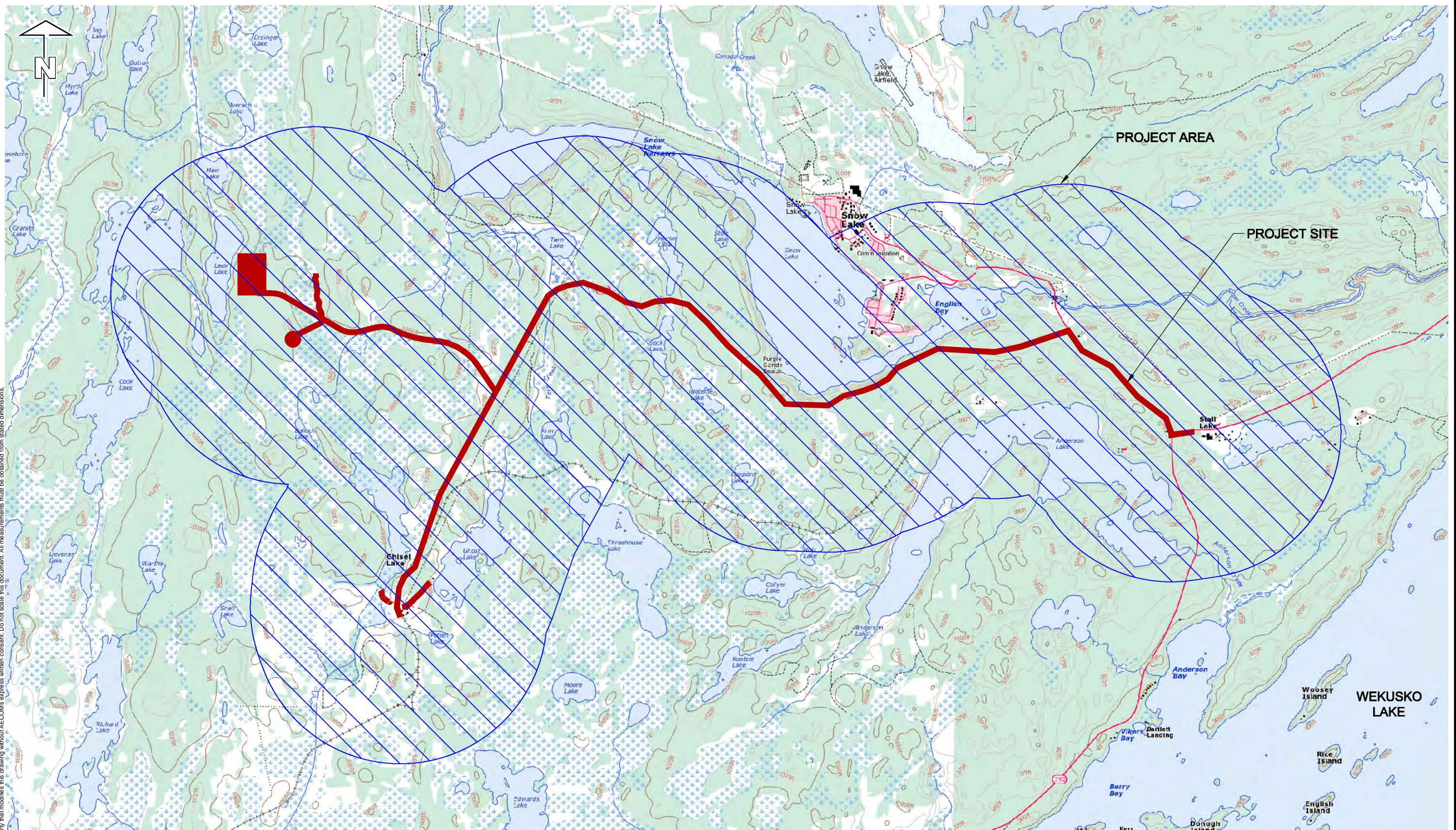


Figure - 13



This drawing has been prepared for the use of AECOM's client and may not be used, reproduced or relied upon by third parties, except as agreed by AECOM and its client, as required by law or for use by governmental reviewing agencies. AECOM accepts no responsibility, and denies any liability whatsoever, to any party that modifies this drawing without AECOM's express written consent. All measurements must be obtained from stated dimensions.

SCALE: NTS  
IMAGE SOURCE: TOPORAMA O63J13 & O63K16



Hudson Bay Mining and Smelting Co., Limited  
Lalor Mine Environment Act Proposal

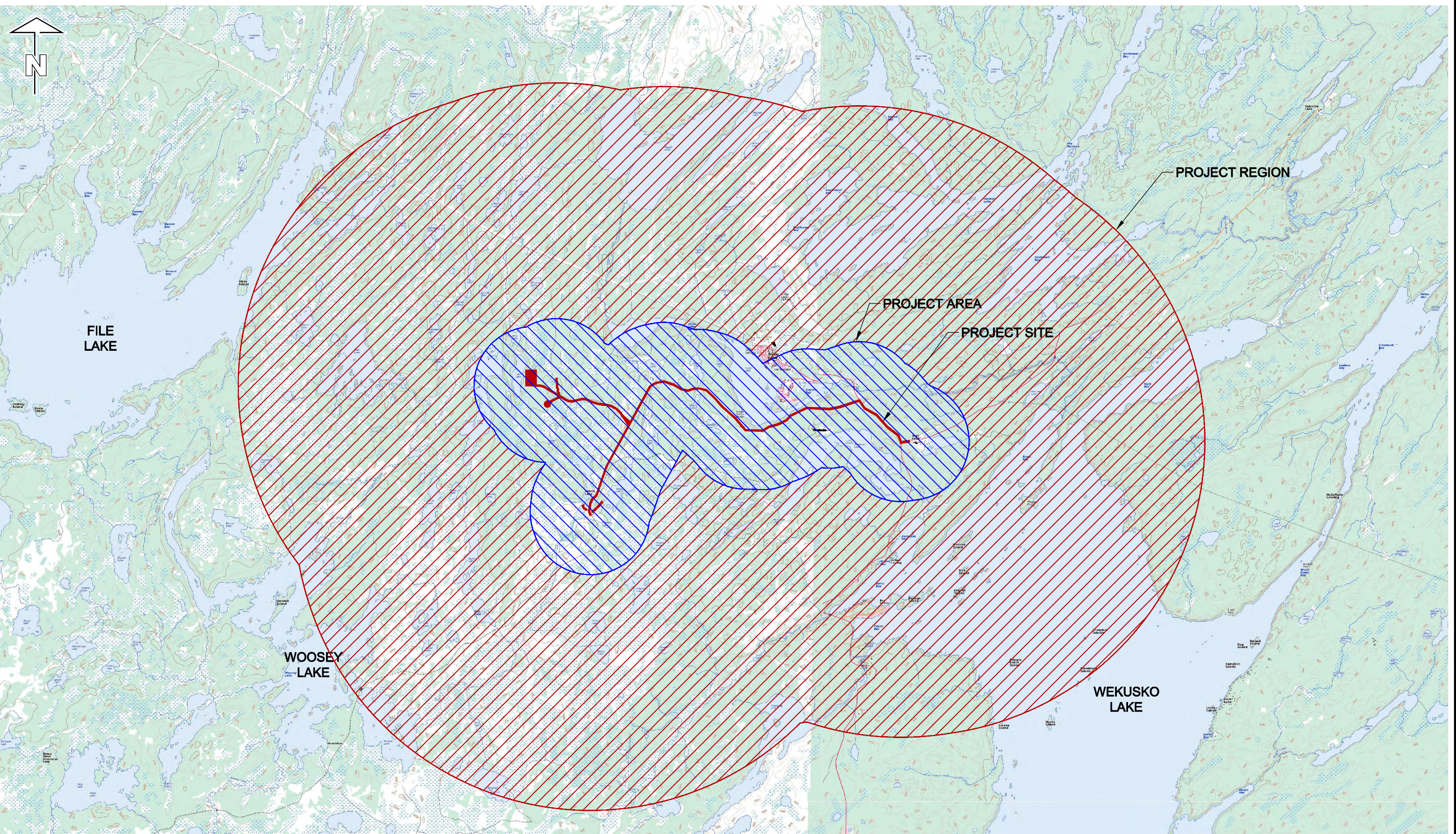
**Project Site and Area**

Figure - 14





This drawing has been prepared for the use of AECOM's client and may not be used, reproduced or relied upon by third parties, except as agreed by AECOM and its client, as required by law or for use by governmental reviewing agencies. AECOM accepts no responsibility, and denies any liability whatsoever, to any party that modifies this drawing without AECOM's express written consent. Do not scale this document. All measurements must be obtained from stated dimensions.



SCALE: NTS  
IMAGE SOURCE: TOPORAMA O63J13 & O63K16

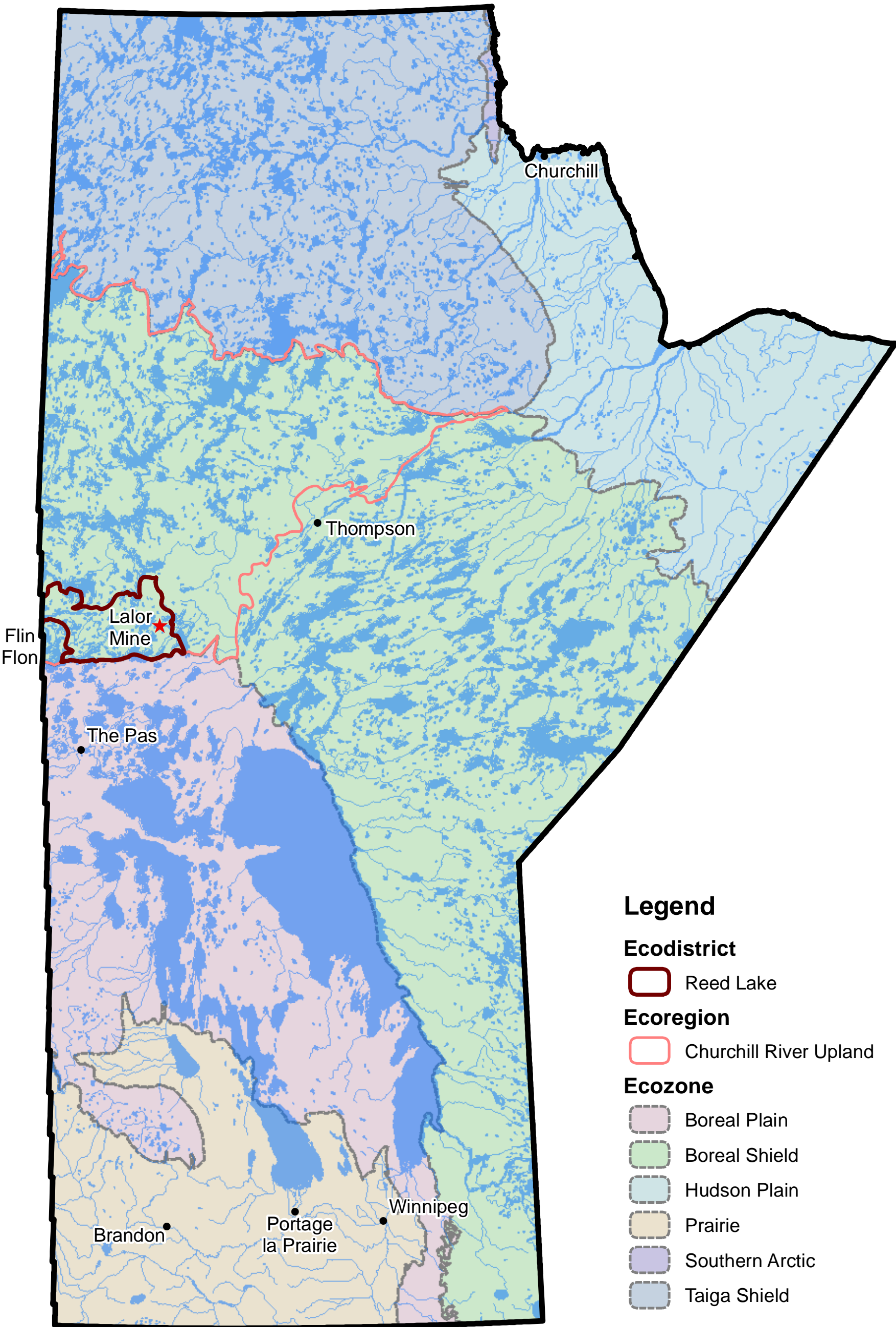
Hudson Bay Mining and Smelting Co., Limited  
Lalor Mine Environment Act Proposal

Project Region





This drawing has been prepared for the use of AECOM's client and may not be used, reproduced or relied upon by third parties, except as agreed by AECOM and its client, as required by law or for use by governmental reviewing agencies. AECOM accepts no responsibility, and denies any liability whatsoever, to any party that modifies this drawing without AECOM's express written consent. Do not scale this document. All measurements must be obtained from stated dimensions.



**Legend**

**Ecodistrict**

Reed Lake

**Ecoregion**

Churchill River Upland

**Ecozone**

Boreal Plain

Boreal Shield

Hudson Plain

Prairie

Southern Arctic

Taiga Shield

0 36,000 72,000 108,000  
m 1:3,600,000  
Source: Manitoba Land Initiative

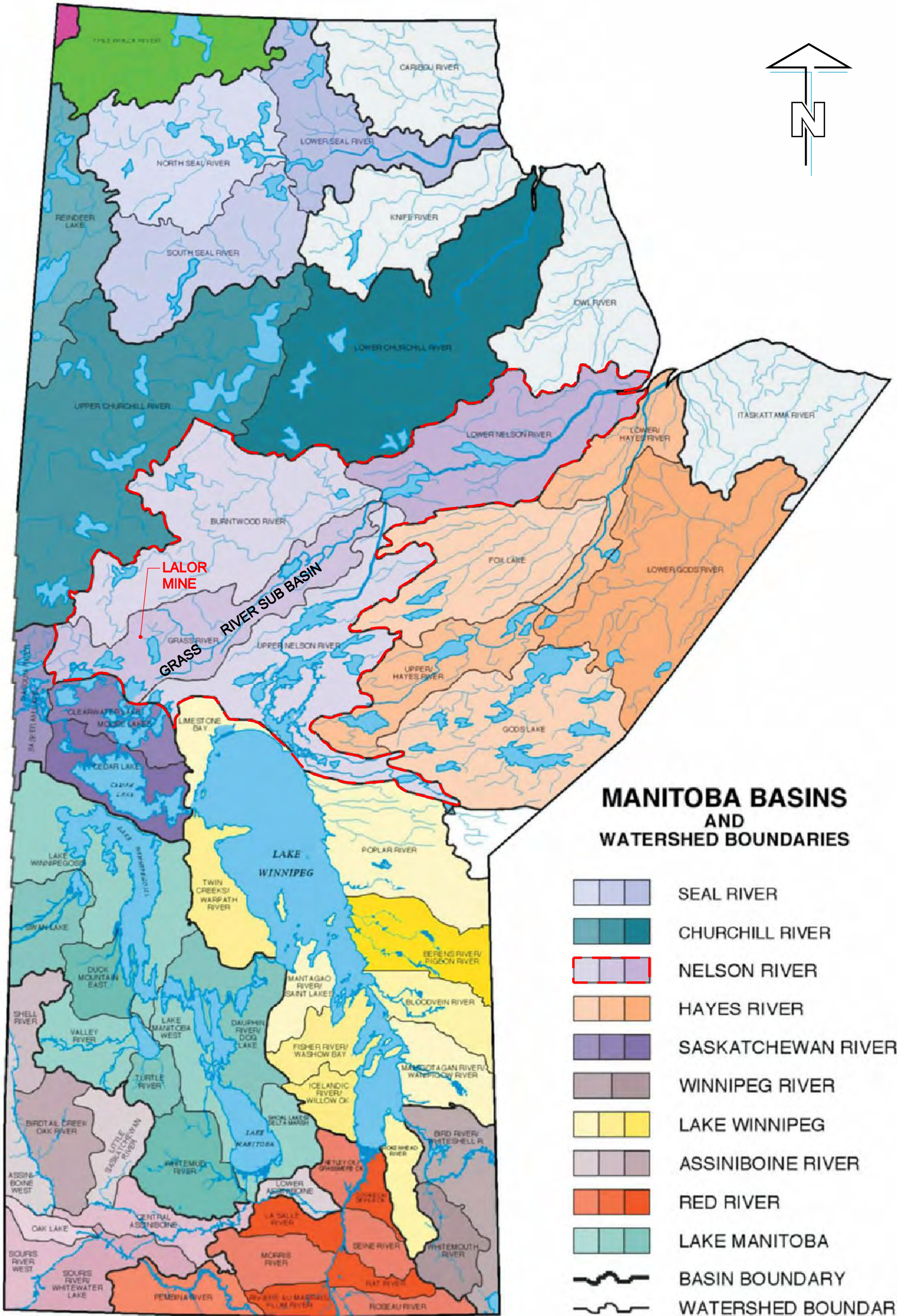
Hudson Bay Mining and Smelting Co., Limited  
Lalor Mine Environment Act Proposal

Ecozone, Ecoregion and Ecodistrict Map





This drawing has been prepared for the use of AECOM's client and may not be used, reproduced or relied upon by third parties, except as agreed by AECOM and its client, as required by law or for use by governmental reviewing agencies. AECOM accepts no responsibility, and denies any liability whatsoever, to any party that modifies this drawing without AECOM's express written consent. Do not scale this document. All measurements must be obtained from stated dimensions.



SCALE: NTS  
IMAGE SOURCE: MANITOBA WATER STEWARDSHIP

Hudson Bay Mining and Smelting Co., Limited  
Lalor Mine Environment Act Proposal

### Watershed Map

