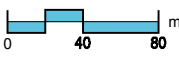
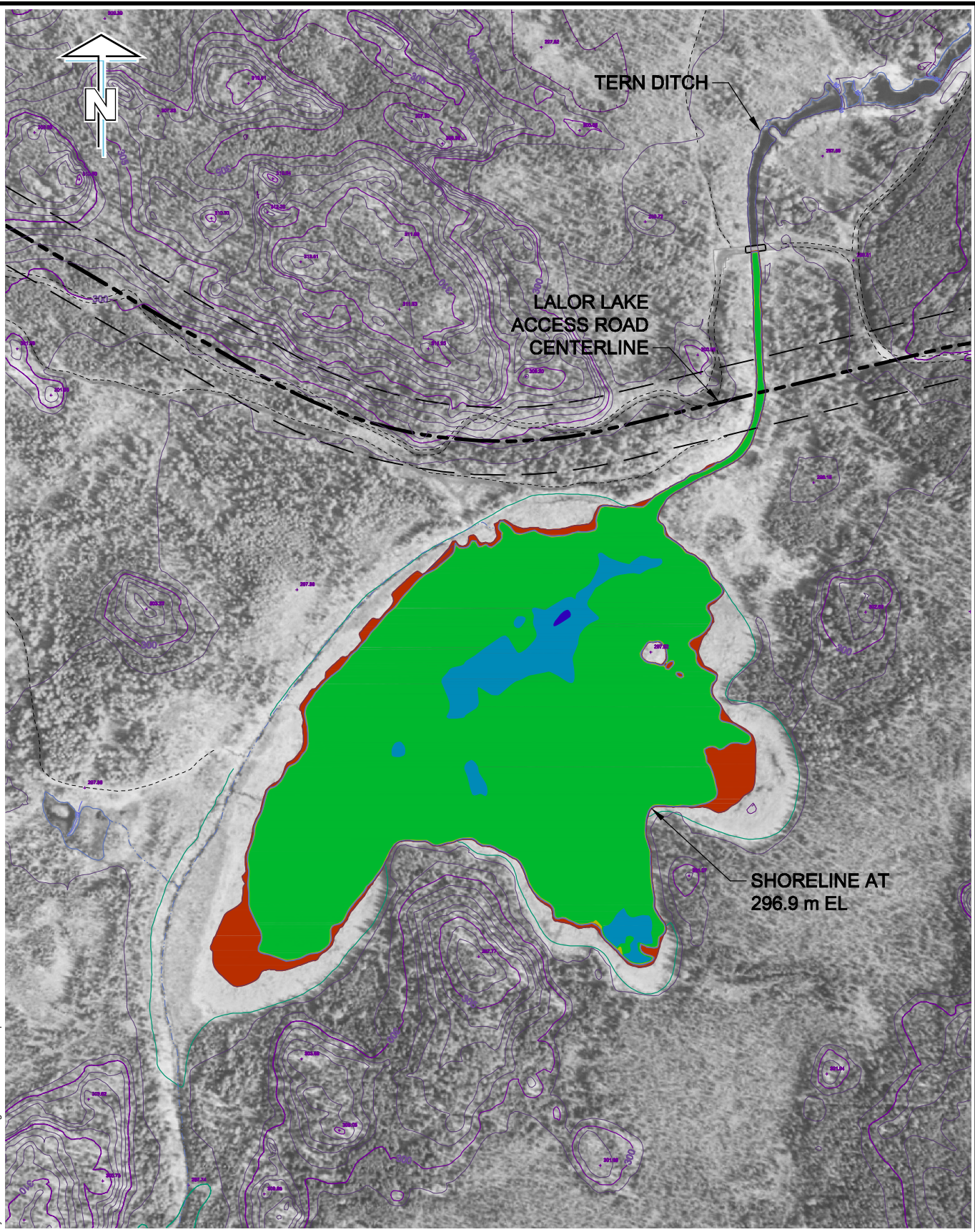


ISS/REV: 0A  
 AECOM FILE NAME: 60157028-02-H-F08-R0X.dwg  
 Saved By: cloustonc  
 PLOT: 12/02/08 1:18:54 PM  
 A SIZE 8.5" x 11" (215.9mm x 279.4mm)

This drawing has been prepared for the use of AECOM's client and may not be used, reproduced or relied upon by third parties, except as agreed by AECOM and its client, as required by law or for use by governmental reviewing agencies. AECOM accepts no responsibility, and denies any liability whatsoever, to any party that modifies this drawing without AECOM's express written consent. Do not scale this document. All measurements must be obtained from stated dimensions.



SCALE 1:4000  
 IMAGE DATE: JUNE 30, 2007

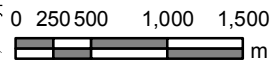
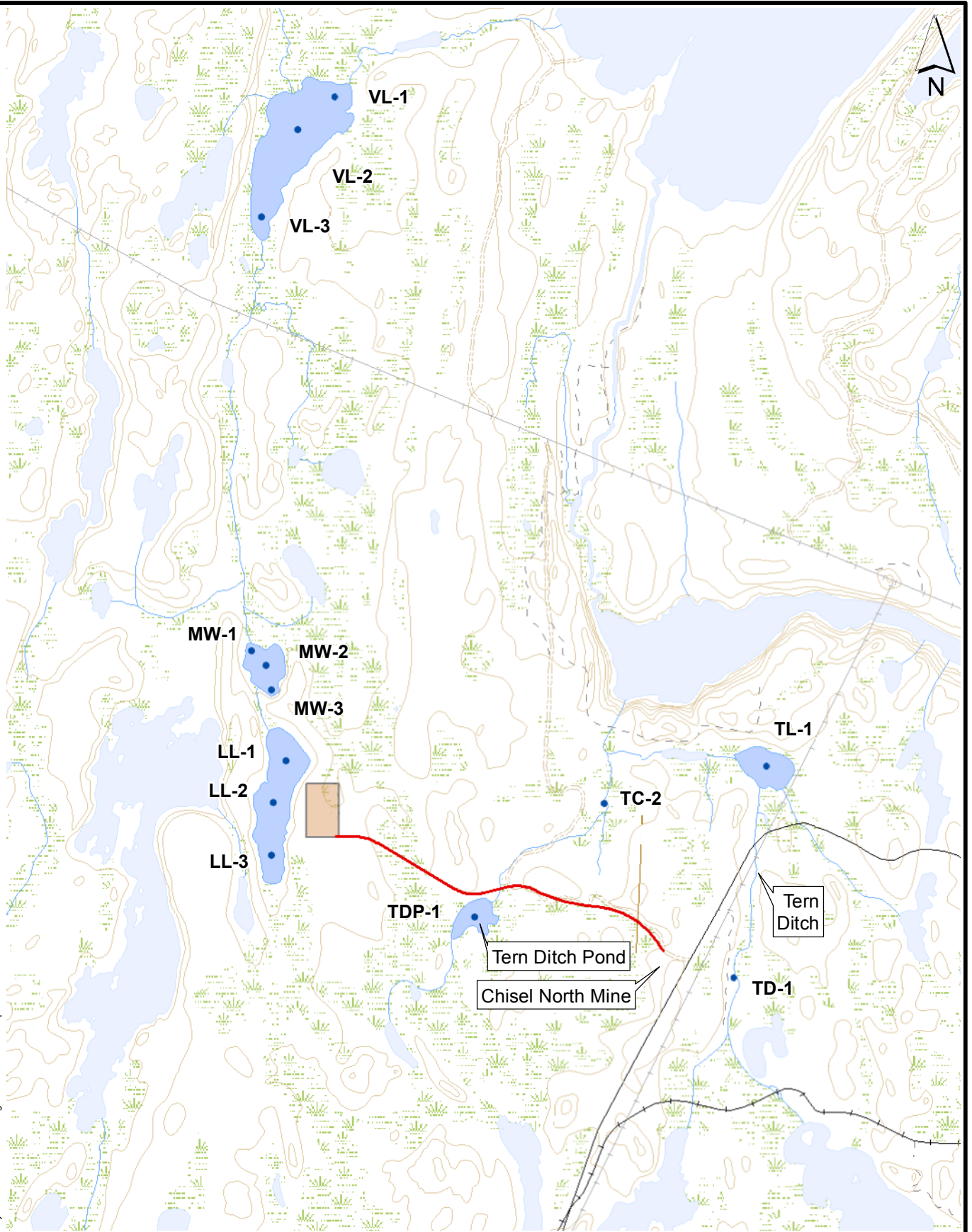
ELEVATION	
<span style="color: red;">■</span>	297.00 m TO 296.75 m
<span style="color: yellow;">■</span>	296.75 m TO 296.50 m
<span style="color: green;">■</span>	296.50 m TO 296.25 m
<span style="color: blue;">■</span>	296.25 m TO 296.00 m
<span style="color: purple;">■</span>	296.00 m TO 295.75 m

Hudson Bay Mining and Smelting Co., Limited  
 Proposed Lalor Mine Environmental Baseline Assessment  
 Tern Ditch Pond  
**Bathymetric Survey**





This drawing has been prepared for the use of AECOM's client and may not be used, reproduced or relied upon by third parties, except as agreed by AECOM and its client, as required by law or for use by governmental reviewing agencies. AECOM accepts no responsibility, and denies any liability whatsoever, to any party that modifies this drawing without AECOM's express written consent. Do not scale this document. All measurements must be obtained from stated dimensions.



1:50,000

**Legend**

- Sample Locations
- Lalor Zone Site
- Access Road

**Hudson Bay Mining & Smelting Co. Ltd.**  
**Proposed Lalor Mine Environmental Baseline Assessment**

**Sample Location Plan**



This drawing has been prepared for the use of AECOM's client and may not be used, reproduced or relied upon by third parties, except as agreed by AECOM and its client, as required by law or for use by governmental reviewing agencies. AECOM accepts no responsibility, and denies any liability whatsoever, to any party that modifies this drawing without AECOM's express written consent. Do not scale this document. All measurements must be obtained from stated dimensions.

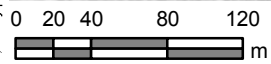
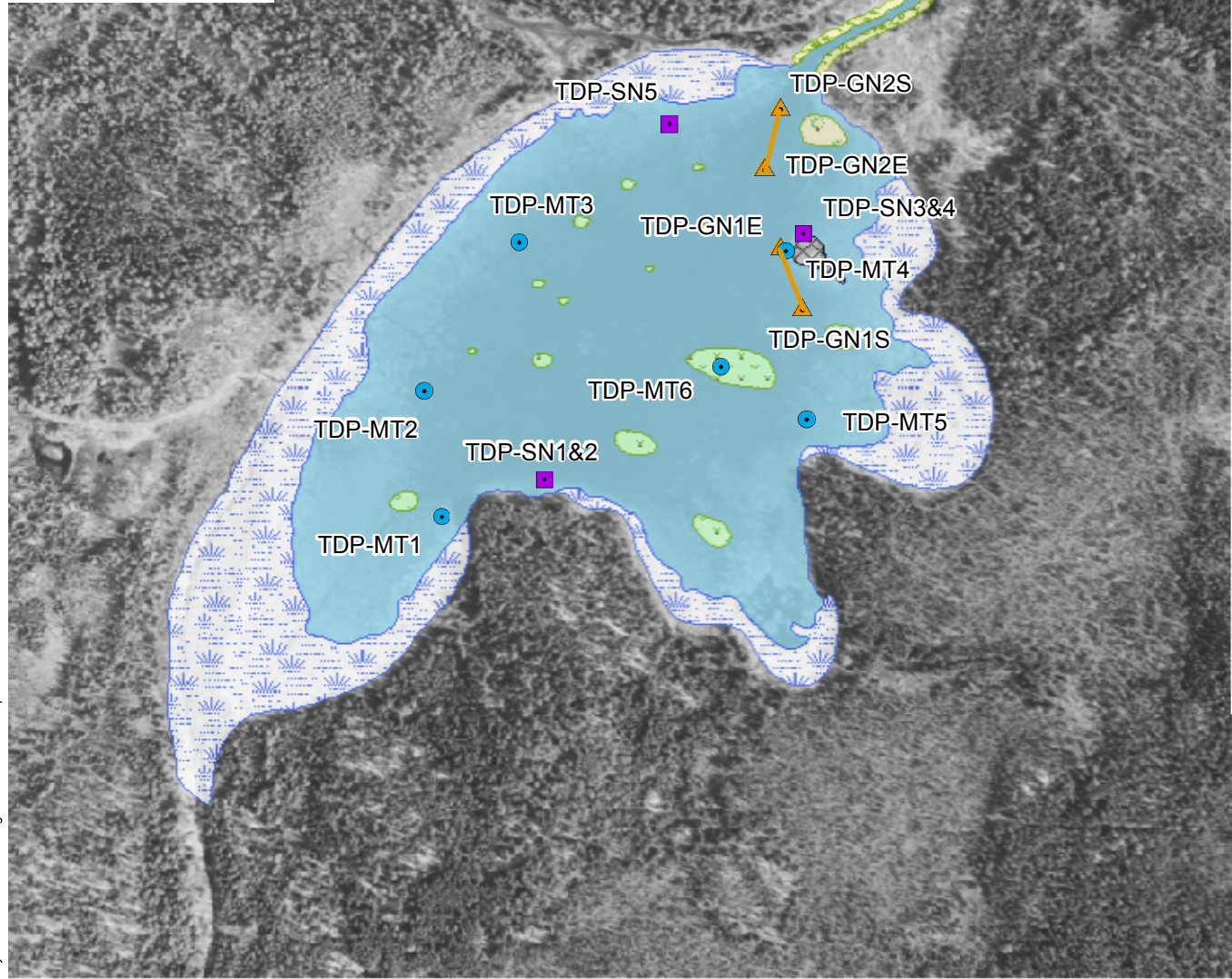
**Legend**

**Fishing Effort**

- Gill Net
- Minnow Trap
- Seine Net
- Access Road

**Habitat**

- Carex sp.
- M. sibiricum
- P. gramineus
- Marsh
- Rocks



1:4,000

Hudson Bay Mining & Smelting Co. Ltd.  
Proposed Lalor Mine Environmental Baseline Assessment

Tern Ditch Pond  
Habitat Map and Fishing Effort  
Drawing - 10

