

**Appendix A:
Public Consultation Materials**

TIM HORTON CHILDREN'S FOUNDATION

The Tim Horton Children's Foundation was established in 1974 to provide a memorable, fun-filled camp experience for children from economically disadvantaged homes. This year the Foundation will serve over 14,000 children from across Canada and the United States through its six first-class, year-round camps.

Tim Horton Children's Foundation camp programs are designed to inspire children. At camp a child has the opportunity to experience many positive personal achievements that allow them to grow, build self-confidence and develop independence. Campers return home from camp with new-found strengths and the courage to achieve the goals they set for themselves.



PROJECT TIMELINES

2010	Site Selection
2010	Construction of Services
2011	Construction of Building Facilities
2012	Opening of the Tim Horton Children's Foundation's Youth Leadership Camp



**TIM HORTON
CHILDREN'S
FOUNDATION**

Where kids discover their best.

YOUTH LEADERSHIP PROGRAM



The Youth Leadership Program is the Foundation's long-term commitment to campers aged 13 years and older. The curriculum of the program is designed to build lifelong leadership skills through an experiential learning approach focused on topics such as goal-setting, problem solving, teamwork, service learning and planning for success.

The Program utilizes a wilderness, back-country setting as the ideal medium for learning and development. This environment is used to increasingly challenge participants to assume greater leadership skills throughout each of the successive levels. The curriculum includes skill development, wilderness canoeing and hiking expeditions in the back country.



TIM HORTON
CHILDREN'S
FOUNDATION

Where kids discover their best.

Whiteshell Provincial Park

Overview

Manitoba's Provincial Park System

The *Provincial Parks Act* (1993) describes the main purpose of the provincial park system:

- to conserve ecosystems and maintain biodiversity
- to preserve unique and representative natural, cultural and heritage resources
- to provide outdoor recreational and educational opportunities and experiences in a natural setting

Classification

Natural Park: to preserve areas of a natural region and accommodate a diversity of recreational opportunities and resource uses.

Landscape Description

The total Whiteshell Provincial park area is 2,721 km², characterized by numerous lakes, rivers and rugged Canadian Shield. Forested areas are typically boreal forest of black spruce, white spruce and balsam fir, intermixed with trembling aspen, balsam poplar, and poorly drained tamarack or black spruce fens and bogs.

Park Purpose

To preserve areas that are representative of the Lake of the Woods sub-region of the Manitoba Lowlands Natural Region; and accommodate a diversity of recreational opportunities and resource uses.

The park will:

- provide nature-oriented recreational opportunities such as hiking, canoeing, mountain biking, snowmobiling and cross country skiing that depend on a pristine or a largely undisturbed environment
- provide high-quality camping, boating and fishing opportunities, and accommodate cottages, related commercial developments, services and facilities such as lodges, trails, campgrounds, day-use areas and picnic sites
- protect and profile historical, cultural and archaeological sites
- promote public appreciation and understanding of the park's natural features
- accommodate commercial resource uses such as forestry, mining and wild rice harvesting where such activities do not compromise other purpose

Land Use Categories

Areas within each park are further described by Land Use Categories (LUC). These LUCs help direct land use of broad areas of the park. Whiteshell Provincial Park has six LUCs. Sylvia Lake is within the Resource Management LUC.

Wilderness

Size: 31,320 ha or 11% of the park

- Protects natural lands and contributes to Manitoba's network of protected areas.
- Provides wilderness hiking and canoeing opportunities in the Mantario area.

Backcountry

Size: 59,715 ha or 22% of the park

- Protects natural lands and contributes to Manitoba's network of protected areas.
- Provides nature-oriented recreational opportunities including canoeing, hiking and sport fishing, hunting
- Accommodates remote cottages, commercial lodges and outcamps.

Heritage

Size: 5,820 ha or 2% of the park

- Protects culturally significant Aboriginal sites in the Tie Creek Basin and contributes to Manitoba's network of protected areas.

Recreational Development

Size: 48,280 ha or 18% of the park

- Provides a range of intensive recreational facilities including campgrounds, cottage subdivisions, horseback riding, day use areas, hiking and cross-country ski trails, canoe routes, sport fishing, and snowmobile trails.
- Permits commercial resource use while recognizing the recreational values of the park.

Resource Management

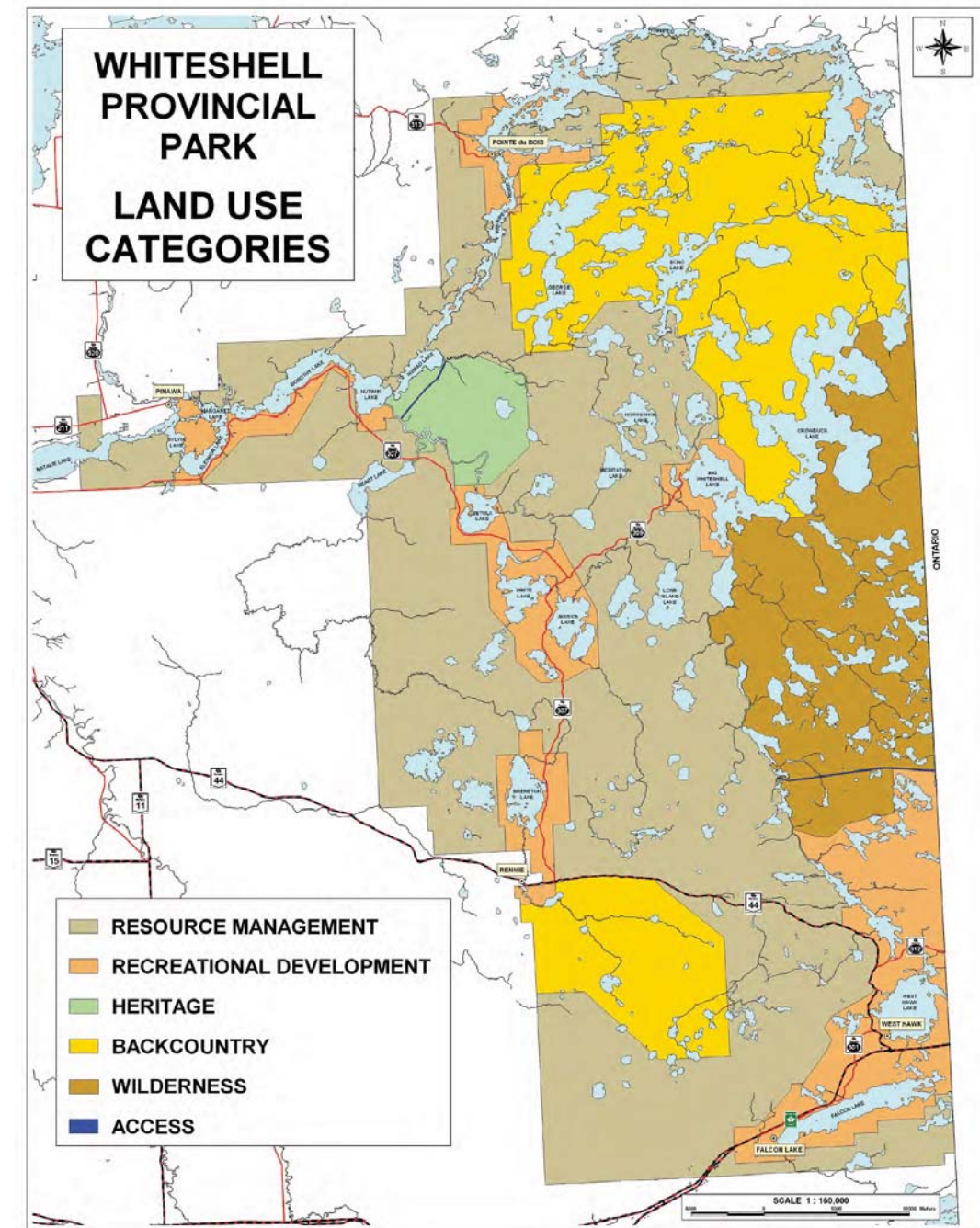
Size: 126,860 ha or 47% of the park

- Provides recreational opportunities including canoeing, sport fishing, hunting, snowmobile, hiking and cross-country ski trails.
- Permits mining and wild rice harvesting.

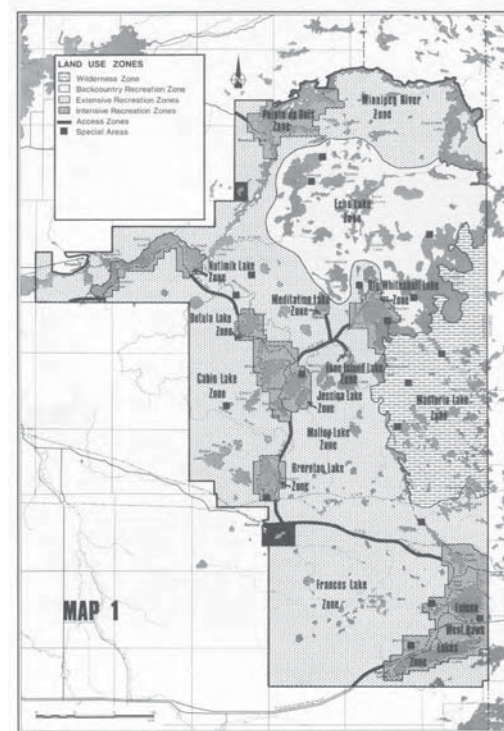
Access

Size: 95 ha or <1% of the park

- Provides access through wilderness and heritage areas of the park.



Whiteshell Provincial Park Master Plan



The 1983 Whiteshell Management Plan sets out long term direction and establishes a zoning scheme for the park. Zoning was intended to guide the allocation, development and management of lands within the park. Sylvia Lake lies in an Extensive Recreation Zone, which the Master Plan described this way:

“Winnipeg River Extensive Recreation Zone”

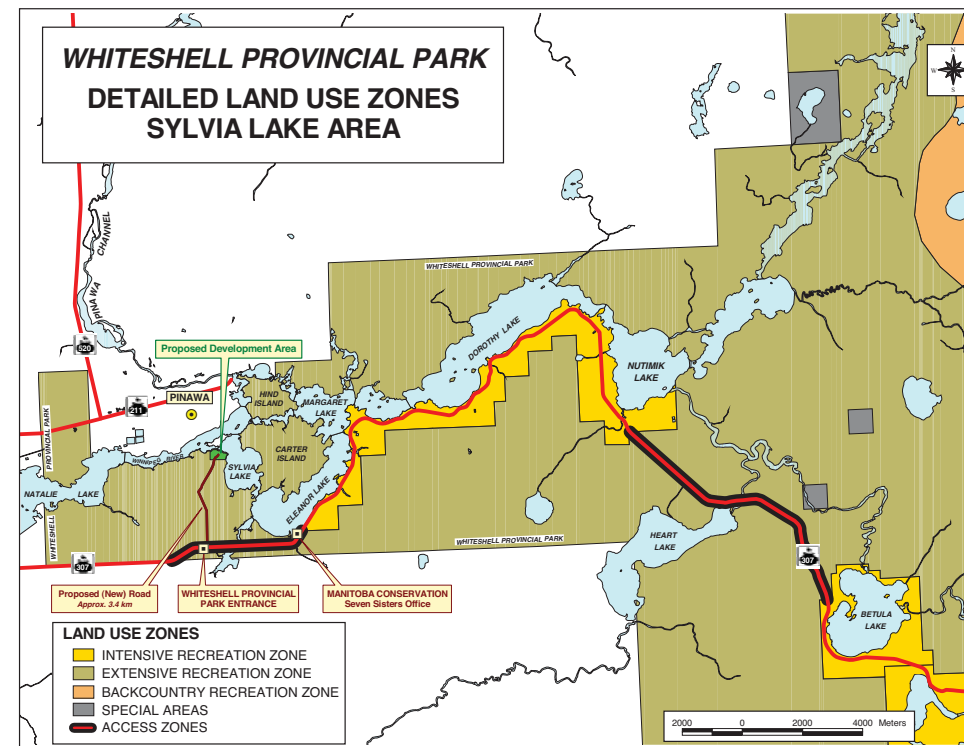
“Generally, all recreational activities permitted in the Backcountry Zone are appropriate in Extensive Recreation Zones. Fishing and hunting are permitted with the exception of some specific restrictions for hunting in the Frances Lake Zone and in the Malloy Lake Zone (in the area south of the C.N.R. line up to the east shore of the Whiteshell River). To ensure greater protection of Canada Geese frequenting the Alf Hole Goose Sanctuary, the hunting of geese is not permitted in these areas.

Generally, forestry* and mining operations are permitted in Extensive Recreation Zones and all-weather roads may be developed in support of these activities. Any such operations will, however, be subject to terms and conditions of permits to explore, harvest or develop.

Trapping in Extensive Zones will be permitted to continue under prevailing management and regulation. Wild rice harvesting will also be permitted to continue.”

* Forestry operations have been prohibited in Whiteshell Provincial Park as of 2009.

The four Extensive Recreation Zones cover 62% of the park and accommodate fishing and hunting opportunities, hiking trails, canoe routes, snowmobile trails, remote campsites as well as a number of lodges, outcamps, and remote cottages. There are three lodges within the Winnipeg River Extensive Recreation Zone.



Management Plan Zones

Backcountry Recreation Zone

Motorized and non-motorized recreational activities are permitted. Off-road vehicle use is not permitted. Water-access campsites and existing commercial recreational facilities such as tourist lodges, licenced boat caches and tent camps conform to the zone. Cottages and private group camps are non-conforming and no expansion of these will be permitted. Fishing, hunting, trapping, wild-rice harvesting and mining are permitted, but development of all-weather roads is not permitted.

Extensive Recreation Zone

Motorized and non-motorized recreational activities are permitted. Off-road use of vehicles is not permitted. Fishing and hunting are permitted. Generally, mining operations are permitted in Extensive Recreation Zones and all-weather roads may be developed in support of these activities. Trapping and wild-rice harvesting will also be permitted to continue.

Intensive Recreation Zones

Existing cottage subdivisions, campgrounds of all types, day-use areas, commercial services such as stores, service stations and motels, park maintenance and administrative facilities are permitted in these zones. Condominium development would not be permitted, which is consistent with the final planning objectives.

Special Areas

Special Areas in Whiteshell Provincial Park contain biological, geological or human heritage resources of regional, provincial and national significance. These areas can include nesting and staging areas for birds and waterfowl, unique geological features, rare terrestrial or aquatic ecosystems, important wildlife habitat, and sites of historic importance. Special areas can be designated within any land use zone and vary in size.

Access Zones

Access Zones in Whiteshell Provincial Park consist of a 300 metre corridor on either side of the centre line of major highways and roads linking the Intensive Recreation Zones within the park. Wayside picnic or camping facilities, water-access sites, commercial services such as service stations, and scenic viewpoints, trails, administrative and service facilities are permitted in these zones.

Sylvia Lake Land Use and Area Features

Manitoba Conservation has partnered with the Tim Horton Children's Foundation to identify a potential site for a Youth Camp in Manitoba. Initial investigations in 2009 suggested that Meditation Lake in Whiteshell Provincial Park had potential for this camp. Public concerns about developments at Meditation Lake, and issues pertaining to water quality caused that site to be ruled out, and other alternate sites to be considered within Whiteshell Provincial Park. Further investigations by Manitoba Conservation have shown Sylvia Lake as an alternate site for the proposed camp. These consultations are for public review of the Sylvia Lake site.

Sylvia Lake is one of numerous lakes along the Winnipeg River System. This system runs approximately 235 km northwest from Kenora, Ontario to Lake Winnipeg in the province of Manitoba. Approximately 95 km of this river system lies within Whiteshell Provincial Park.

Flows on the Winnipeg River and its lakes are controlled by the Lake of the Woods Control Board. The Board regulates Lake of the Woods and Lac Seul water levels, and downstream flows on the Winnipeg and English Rivers for the benefit of the public and all river users.

Forest Landscape

The study area is within the Boreal Shield ecozone and is characterized by mixed deciduous and coniferous forests including stands of white and black spruce, balsam fir, jack pine, balsam poplar and trembling aspen. The diverse topography and varied soil and drainage conditions in the area, reflect a mosaic of forest cover and site conditions within the study area. Dry upland ridges and granite rock outcrops are dominated by jack pine, trembling aspen and occasionally bur oak. Balsam poplar, black spruce and tamarack are most abundant in low lying areas, with mixed stands of aspen, balsam fir and white spruce occupying mid slope environments. Fire remains the dominant natural disturbance to area forest landscapes.

Wildlife

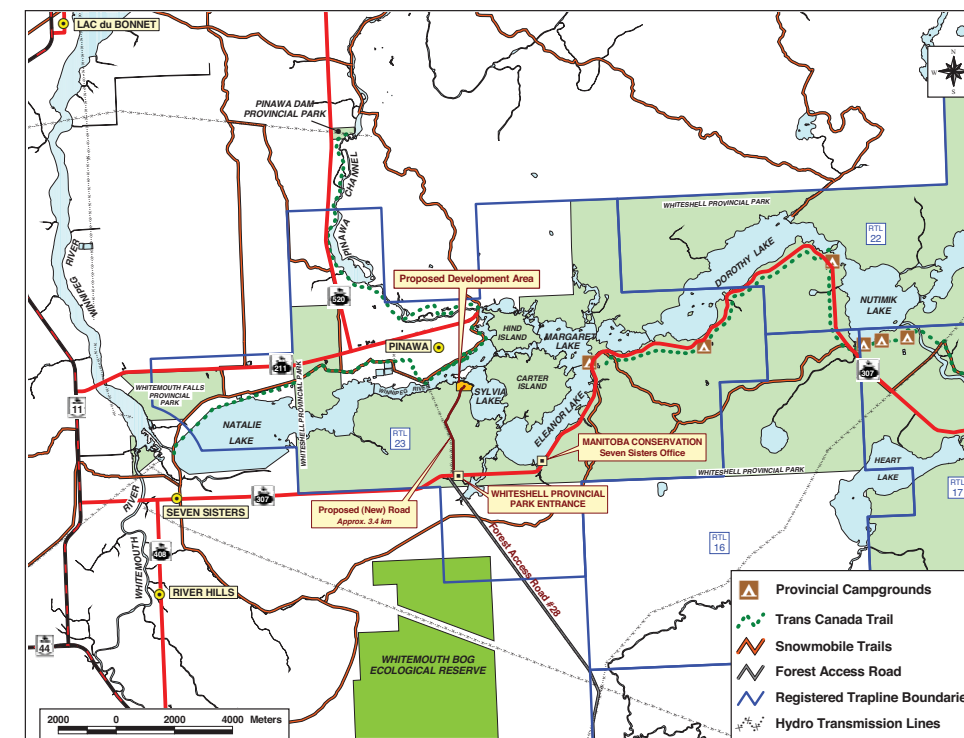
Forest landscapes in the study area provide habitat for a variety of common wildlife species associated with deciduous/mixed forests, including white-tailed deer, fox, songbirds and small mammals such as red squirrels and the eastern chipmunk.

Fisheries

The Winnipeg River, which flows through Sylvia Lake, supports a diversity of fish species with over 50 different species known to occur in the river system. Popular recreational angling species include Walleye, Perch, Northern Pike, Smallmouth Bass, Goldeye and Lake Whitefish. The river system is also home to Lake Sturgeon, the largest freshwater fish in the Hudson Bay watershed. Lake Sturgeon have been listed by Commission on Status of Endangered Wildlife in Canada (COSEWIC) as an endangered species in the Winnipeg River. However, angling for Lake Sturgeon is permitted on a catch and release basis. Several research projects on Lake Sturgeon movements, habitat requirements and diet have been conducted in the Winnipeg River system by graduate students of the Canadian Rivers Institute and annual population surveys have been conducted by Manitoba Water Stewardship Fisheries Branch staff.

Existing Recreational Use

Whiteshell Provincial Park and the Winnipeg River system are popular destinations for Manitobans pursuing water and nature based recreational activities in all seasons. The river system, including Sylvia Lake, supports boating, canoeing, recreational angling and snowmobiling. Boat launches, beaches, campgrounds, day use picnic sites and recreational cottages are located near Sylvia Lake, along the river system. Hunting and trapping occur seasonally in undeveloped areas adjacent to Sylvia Lake.



MAJOR LAKES	Cottages	Campgrounds	Campsites	Backcountry Sites	Youth Camps	Water Pump Houses	Wastewater Treatment	Transfer Station	Lodges	Beaches	Day Use	Boat Launch	Population
Nutimik Lake	248	3	255	0	1	1	1	1	1	3	2	2	n/a
Dorothy Lake	151	2	136	0	0	3	2	0	2	3	2	2	n/a
Eleanor Lake	52	0	0	0	0	0	0	0	1	0	0	1	n/a
Margaret Lake	81	1	75	0	0	1	1	0	1	1	0	1	n/a
Sylvia Lake	0	0	0	0	0	0	0	0	0	0	0	0	n/a
Natalie Lake	0	0	0	0	0	0	0	0	0	0	0	0	n/a
Townsite													
Pinawa	0	2	188	0	0	1	1	1	1B&B 2 hotels	1	1	1	1450
Seven Sister Falls	0	0	0	0	0	1	1	0	1 hotel	0	1	0	200

Sylvia Lake

Proposed Site For The Tim Horton Youth Leadership Camp

Proposed Location

The proposed site for the Tim Horton Children's Foundation Youth Leadership Camp is located in an undeveloped area on the northwest shore of Sylvia Lake in Whiteshell Provincial Park. There are no existing leases or landholdings adjacent to the site. A hydro transmission line exists approximately 1/2 km to the west of the proposed site.

Description

Sylvia Lake has approximately 6.5 km of shoreline with depths reaching a maximum of 24.6 metres. Carter Island and Hind Island separate Sylvia Lake from Margaret Lake to the northeast and Eleanor Lake to the southeast. The lakes form part of the Winnipeg River System. The town of Pinawa is located north of the proposed Tim Horton Children's Foundation Youth Leadership Camp location, on the north shore of the Winnipeg River. The town of Seven Sisters is located approximately 8 km to the west along Provincial Highway #307.

Water Quality

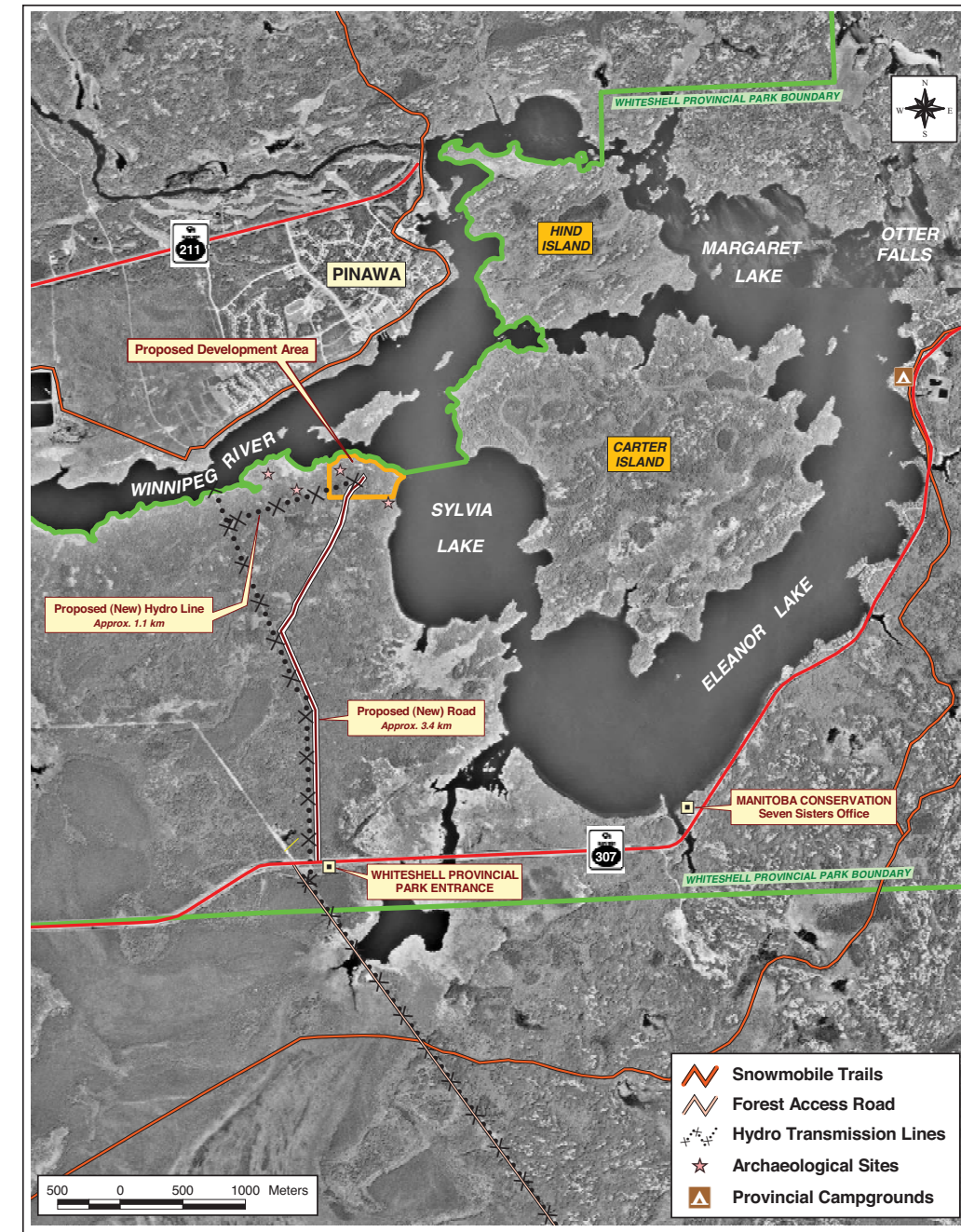
Sylvia Lake is part of the Winnipeg River system which originates in Lake of Woods, Ontario and flows westward through Manitoba into Lake Winnipeg.

Water quality along the river system is characteristically uniform and can be described as excellent. Densities of the fecal indicator bacteria, Escherichia coli (E. coli) are consistently below the recreational water quality guideline of 200 E. coli per 100 millilitres, which is considered safe for swimming. Algal blooms do occur in lakes along the Winnipeg River system; however, they tend to be infrequent and not severe.

Overall, water quality in the Winnipeg River system, including waters near Sylvia Lake meets the Guidelines for Canadian Recreational Water Quality.

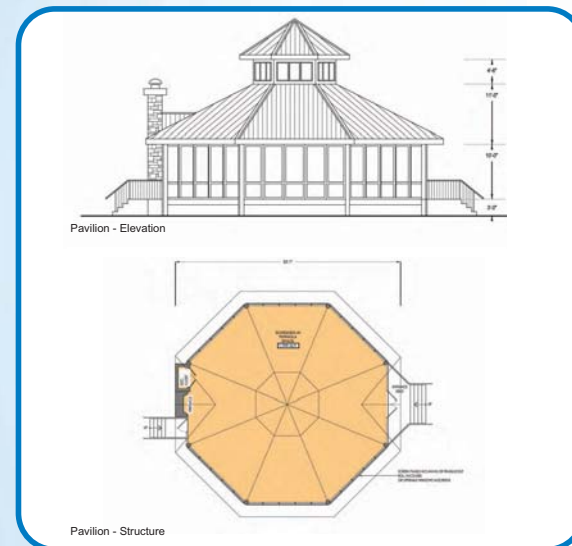
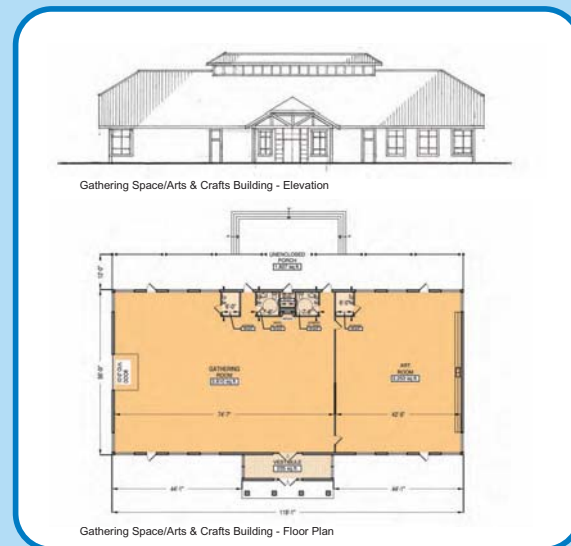
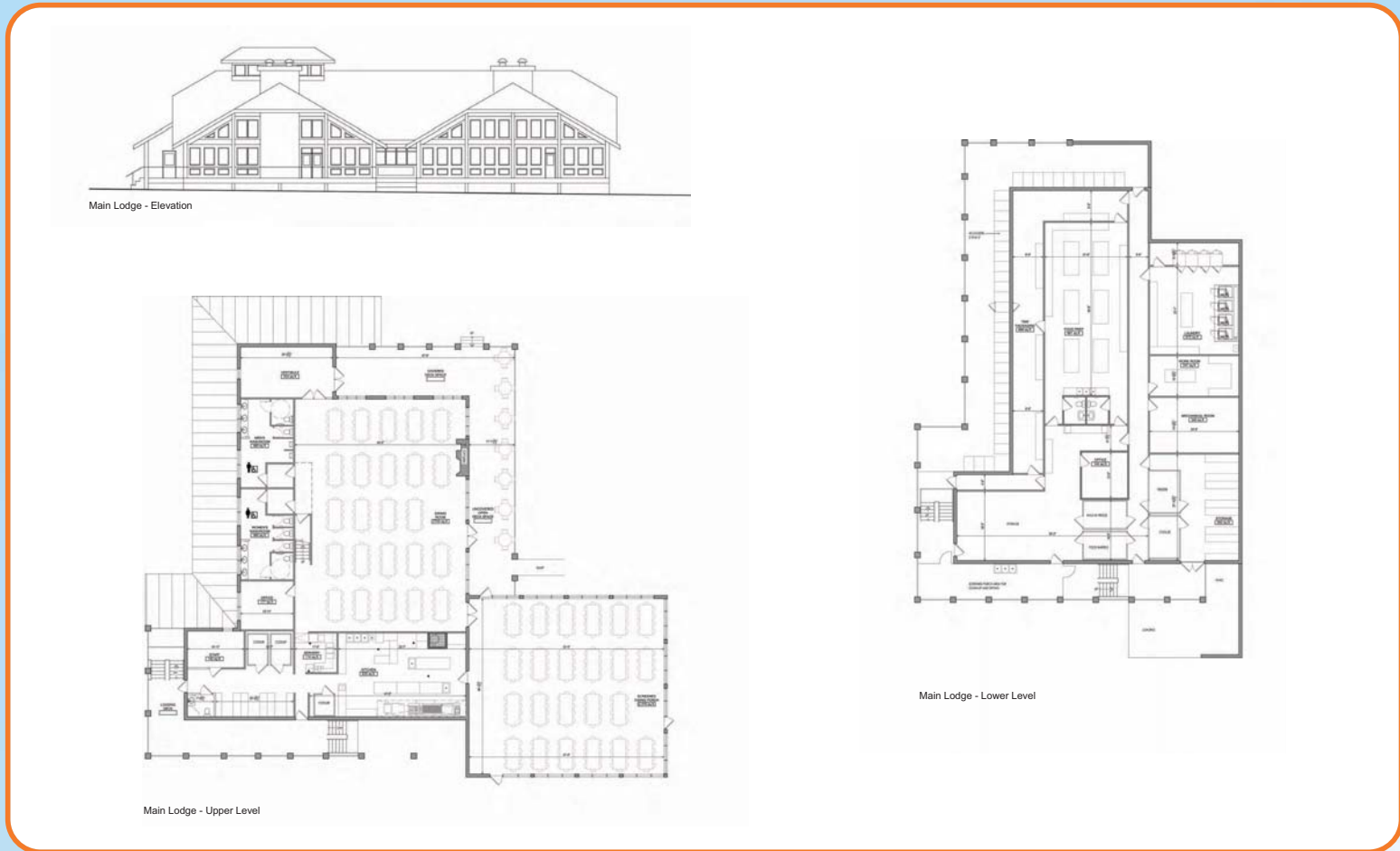
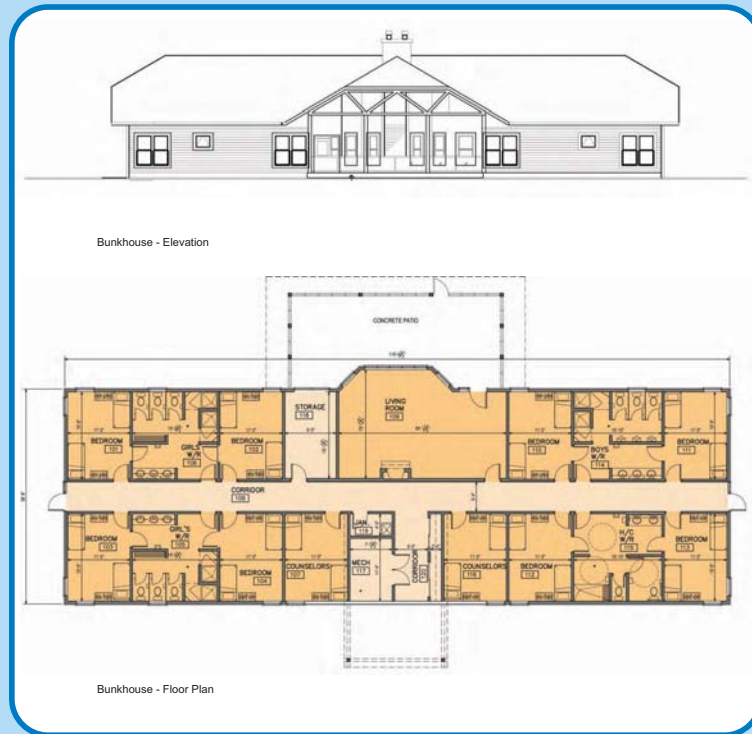
Historic and Archaeological Values

The Winnipeg River region has significant precontact and historic values associated with First Nations, European exploration, the fur trade, hydro electric development, recreation and park development. Many archaeological sites in this region reflect a long history of human use and occupation of the river corridor.

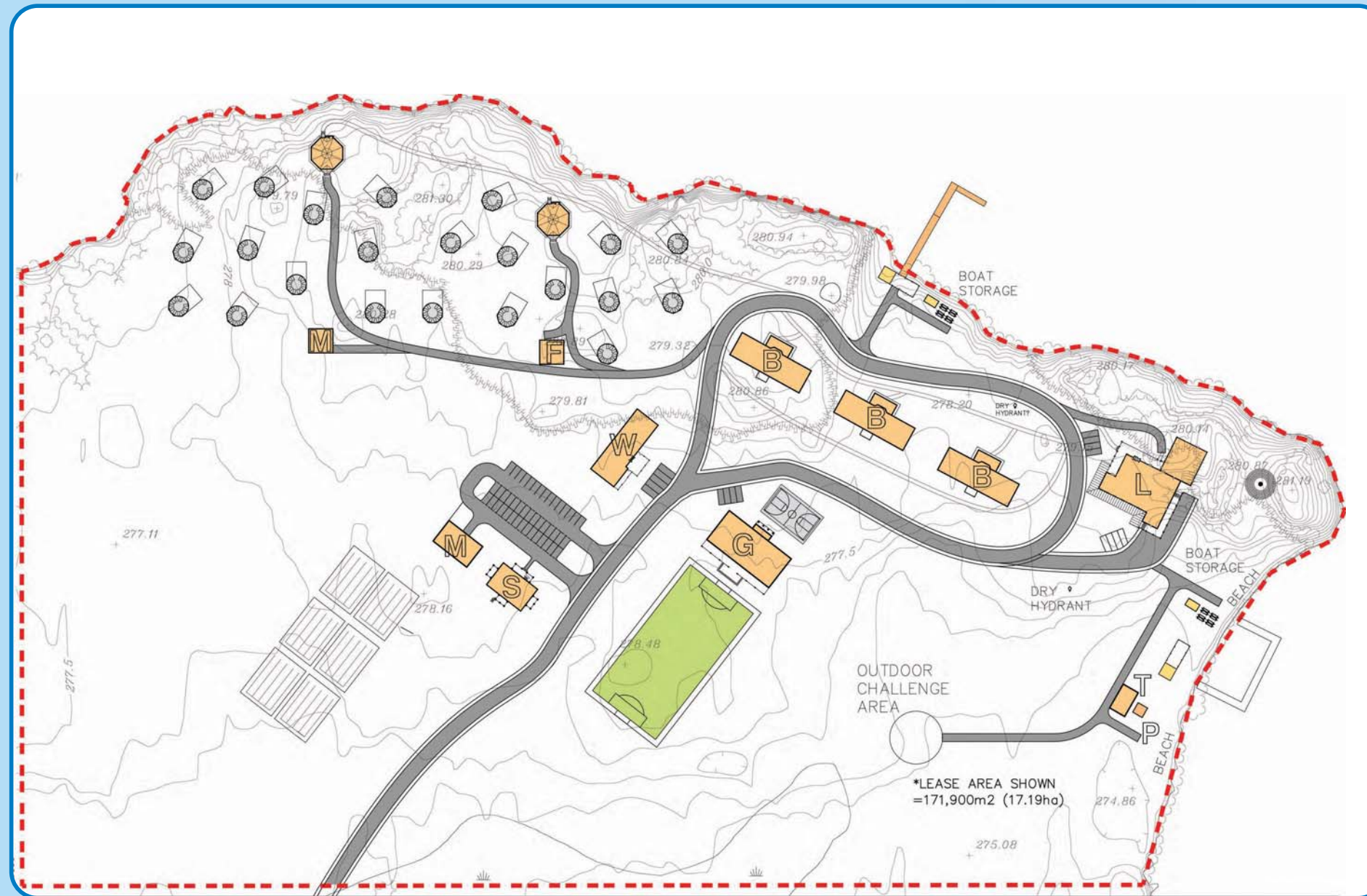


PLANS

Conceptual Drawings Only



SITE PLAN



Conceptual Representation



Where kids discover their best.

SITE PERSPECTIVES

BUNKHOUSES



YURTS and GATHERING SPACE



BEACH



MAIN LODGE

Conceptual Representation



A SUSTAINABLE AND INSPIRING CAMP

The Tim Horton Children's Foundation is committed to developing a facility and program that are sustainable, responsible, and inspiring to young people. Building on the THCF philosophy of quality in every respect, this focus on excellence would be applied in new ways in the design and development of this unique facility.

Our areas of focus for this site will include:

Water Conservation

- Use of no-flow urinals and low-flow faucet aerators, showerheads and toilets

Forest Management

- Tree planting program
- Habitat restoration and enhancement

Wastewater Treatment

- State-of-the-art wastewater treatment plant that meets Provincial standards

Light Pollution

- Dark sky lighting

Camp Programming

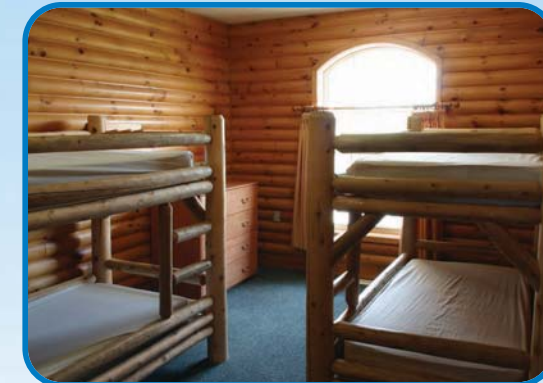
- Natural and cultural history of the local area infused into all curricula
- *Leave No Trace* principals practiced on all wilderness canoeing and hiking expeditions

Waste Reduction

- Recycling and composting programs that model sound environmental practices

Energy Conservation

- Modern, energy-efficient buildings
- Natural building materials, many locally sourced



**TIM HORTON
CHILDREN'S
FOUNDATION**

Where kids discover their best.

COMMUNITY IMPACT



COMMUNITY PARTNERSHIP PROGRAM

- Residential camp sessions (2-7 days) in fall, winter and spring, serving economically disadvantaged children from agencies and schools in communities across Manitoba
- The Tim Horton Children's Foundation covers all costs, including transportation and first-class program based at the camp

COMMUNITY RESOURCE

- The camp is available for use on a planned basis, including volunteer opportunities and involvement of community groups, such as local garden clubs, service clubs, colleges and universities to enrich the camp site and programs

OTHER LOCAL BENEFITS

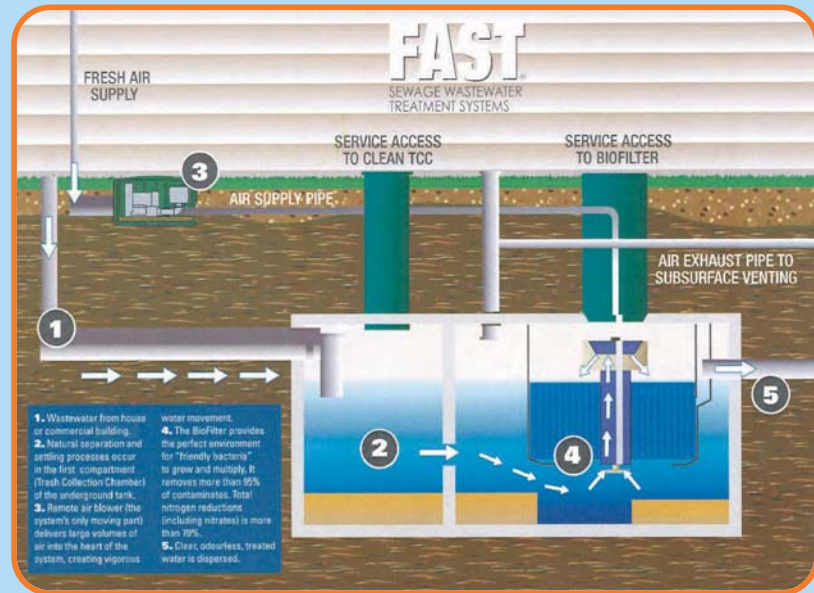
- 100 seasonal employees
- 5 full-time staff
- Positive economic impact for local retailers and other suppliers
- Opportunities for booking the camp by community organizations on a planned basis



**TIM HORTON
CHILDREN'S
FOUNDATION**

Where kids discover their best.

WASTEWATER TREATMENT - Proposed Youth Leadership Camp, Sylvia Lake



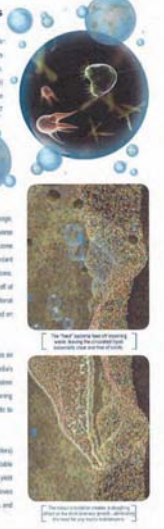
The Real Beauty of this System is How Well It Works.

FAST is a truly green technology based on environmental science and engineering principles. The FAST (Fixed Activated Sludge Treatment) process creates a unique habitat combination of attached and suspended growth in an aerobic natural bed reactor. The green FAST (Fixed Activated Sludge Treatment) technology creates the quality of life environment, fast flow, and the effectiveness of activated sludge treatment, making the innovative, patented FAST system technologically advanced and substantially reliable. The FAST process provides the ideal environment for rapid bacterial growth by ensuring plenty of oxygen and food are readily available to the bacteria layer just below the surface of the media.

FAST's fixed bed media provides a high surface to volume ratio to maximize suspended microbial growth during low, average and peak usage. Bacteria "feed" or attached to the stationary media within the biofilter, diverse and self-regulating population of microbes consistently maintained in the wastewater to stabilize the media. FAST maintains stable performance because the attached bacterial population is attached to the media and does not wash out of the system. During times of low usage, the large volume of living organisms delay a large part of the system, making FAST well suited to intermittent use applications. Unlike conventional activated sludge treatment, FAST systems, bacteria grow on the media and feed on floating waste leaving the treated effluent clear and free of odor.

Aerobic microbial degradation. The system's only moving part, introduces air through the system to facilitate natural oxidation of wastewater through the media's surface. The air, combined with the natural oxidation of air and food through the system creates a changing effect on the bio filter media, which results in self-cleaning action, allowing the need for any media maintenance. Disposed solids that settle to the bottom of the tank are later removed.

High levels of bacteria and other useful microbes (including aerobic and anaerobic) in the biofilter maintain their growth cycle, operate under diverse temperature conditions in the wastewater, prevent sludge conditions and odors, and allow a significantly longer design life than conventional plants. A large 40-gallon air blower and distribution tank water, operates most effectively in cold climates and provides low energy.



Decades of experience with water and wastewater projects worldwide has taught us that when we provide pre-engineered, modularized products to project decision makers, projects are completed more quickly, more affordably and with repetitive, consistent and successful results.

- FAST is designed to be efficient, dependable, easy to install and very user-friendly. FAST is tremendously beneficial alone or in combination with other processes to meet the rigorous demands of the most challenging and complex projects.
- Refracting of existing activated sludge plants with FAST technology is an affordable, dependable way to significantly upgrade performance with minimal impact to the operator.
- The advanced treatment of FAST allows for flexible reuse and recycling of process water resources.
- Aerobic ponds and lagoons can also be considerably enhanced with the addition of specially configured FAST systems designed for installation directly into the lagoon without requiring a dig of operation.
- The flexibility and consistent performance of the compact, modular FAST wastewater treatment systems make them ideal for use in numerous applications and projects around the world.
- Since the first FAST product installation about the year 1980, FAST has been used in residential, commercial, industrial and marine applications around the globe.

A Process Born from Unique Challenges

Since the early 1980s, wastewater engineers have struggled to use some form of media in an aerobic environment to facilitate bacterial growth and reduction of solids and BOD in domestic and industrial wastewater. In the 1980s, Smith & Lowrey, Inc. succeeded in developing a series of the light process and engineered a new technology called fixed activated sludge treatment (FAST) for the water industry. The innovative system allowed wastewater to be treated and reused under various conditions for both housing.

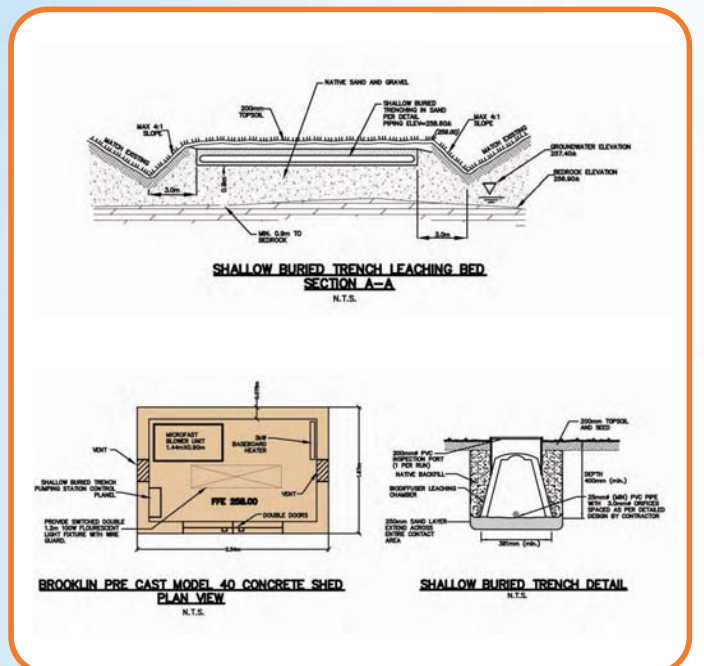
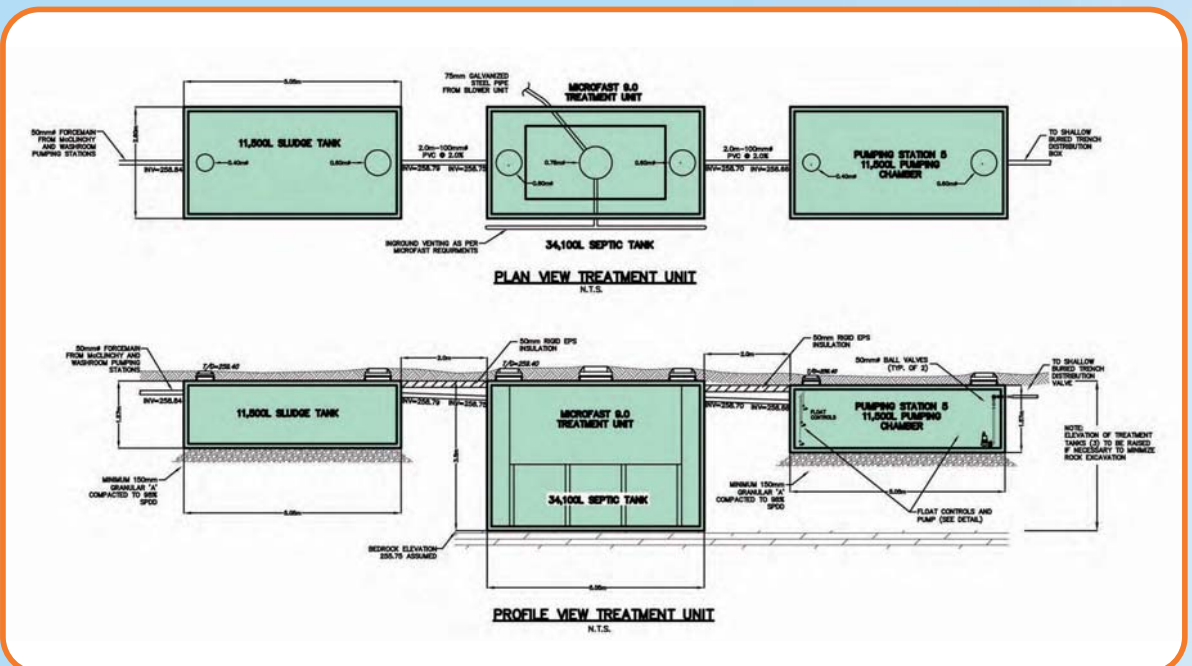
The unique nature of the process provided many challenges not seen in municipal or industrial wastewater applications. With a narrow vessel's constant treatment process would work. The first prototype was installed about the year 1980 at the University of Wisconsin. The success of the first prototype led to the development of the first FAST product line. The success of the FAST process opened engineering doors for development of low-cost FAST treatment plants that would provide the very same benefits: a reliable, stable treatment process, small footprint and easy installation and operation.

From this technology, the FAST technology has been engineered into many product lines, all designed around the same fixed activated sludge treatment process. FAST products can now be seen operating quietly in residential, commercial, municipal, industrial and marine applications around the globe.



Sylvia Lake Wastewater Treatment System

- The wastewater treatment system shown here is an example of the type of treatment system that the Tim Horton Children's Foundation has used at other camps (eg. Tim Horton Memorial Camp, Parry Sound, Ontario).
- The wastewater system for the Sylvia Lake Camp will meet the water quality and environmental protection requirements of the Province of Manitoba.
- The system will require an Environmental Act Proposal which will be subject to review by Manitoba Conservation and Manitoba Water Stewardship, as well as being available for public comment.



Where kids discover their best.

Proposed Youth Leadership Camp at Sylvia Lake

Public Review Comments

The purpose of this review is to seek public comments on the proposed development of a Tim Horton Children's Foundation youth leadership camp at Sylvia Lake in Whiteshell Provincial Park.

Youth Leadership Camp

Do you agree with the proposed development of a youth leadership camp at Sylvia Lake?

Yes

No

Comments / concerns: _____

How might your concerns be addressed? _____

What is your association to Whiteshell Provincial Park? (check as many as apply)

- | | |
|---|---|
| <input type="checkbox"/> Backcountry traveler | <input type="checkbox"/> Camper |
| <input type="checkbox"/> Cottager | <input type="checkbox"/> Lodge visitor |
| <input type="checkbox"/> Permanent resident | <input type="checkbox"/> Fisher |
| <input type="checkbox"/> Hunter | <input type="checkbox"/> Business owner |
| <input type="checkbox"/> Other _____ | |

Optional Information:

Name _____

Address _____

Email address _____

If needed, please attach additional pages with your comments. For more information please call Manitoba Conservation at 204-945-6799 or 1-800-214-6497 or go to manitobaparks.com

Please respond by March 22, 2010

E-mail mgmtplan@gov.mb.ca

Whiteshell Youth Leadership Camp

Manitoba Parks and Natural Areas
Box 53, 200 Saulteaux Crescent
Winnipeg, Manitoba R3J 3W3



Sylvia Lake Camp: Results of Public Review

Respondent #	How do you use Whiteshell Provincial Park?	Concerns and Comments	How might your concerns be addressed?
	Backcountry traveler (BC) Cottager (CR) Permanent Resident (PR) Hunter (H) Camper (C) Lodge Visitor (LV) Fisher (F) Business Owner (BO) Other (O)		
1	PR	fast current water, safety concern, noise factor problem with Pinawa	by selecting another location
2	PR, C, O	concern re cottage development, no consultation in Town of Pinawa	consultation sessions and free cookies in Pinawa
3	PR	location - lights/noise across river to Pinawa, fast water near camp, opportunity for other developers to open up Sylvia Lake to cabins	relocate further away from Pinawa, ensure that no other development can/will occur
4	C	bad location, water to fast, eagles nesting ground, wind creates white caps, voices can be heard across to Pinawa	camp is good idea but should be located in the developed area of the park and not break it up. People moved to Pinawa or live there to get away from the noise, vandalism. The last thing I would want is the people of Pinawa to endure locking their doors, listen to nightly noise, increased boat traffic. No consistent answers to questions at open house.
5	PR, O, C	I support the idea of a camp in the area but I am concerned that the location is too dangerous due to water currents when water levels are high and drownings are a real possibility.	move the proposed site further upstream on Sylvia Lake or find a different lake.
6	BC, PR, C, LV, F, BO	terrible location, due to fast moving water and unpredictable current., very dangerous with other water dtaft, worried about developmnet (future) due to access road being put in place, fish breeding ground on proposed beach side, impact on wildlife (otters, eagles, beavers, fish, etc)	having the camp located in a different location that is safer for the kids and with less impact on wildlife. Love the idea, just a bad location.
7	PR	safety concern due to current. Local area is already overcrowded with cottages - Lake Sylvia is the last pristine area with no human development, water quality, fish habitat issues	choose another location. Why was the information meeting not held closer to the proposed location - as in Pinawa?
8	BC, C	I am not opposed to the idea of a youth leadership camp, just not inside the park itself. Park lands should be protected for recreational uses, not opened up for more development which erodes the "wilderness" experience	simply find a location adjacent to the park on public lands that is easily accessible for the camp users. Location just north of proposed location on the Pinawa shore
9	C	damage to a pristine environment, distruction of ecology	consider using an area of land that has been damaged by the environment and rebuild it, rather than using an area that has currently not been touched
10	C	concern of over fished, waters, which has already occurred - there is already a campground nearby and another camp will deplete natural resources - water traffic is already high and further traffic would create added environmental concerns	
11	C	it is a beautiful development and plan but I am really concerned about the environmental damage. This area has not been touched and we need to preserve it.	consider building on an already disturbed ecosystem. Also - you need to consult with residents from the town of Pinawa
12	LV, O	neutral on idea - fast water at the point	
13	BC, PR, C, BO	undecided - road into undeveloped lakes may promote cottage development. Why so close to Pinawa - would it not detract from the wilderness feel? Water really is just not safe for this age group - or anyone really (our family is experienced canoers and kayakers)	Conservation declare the entire area a wilderness site that would prevent cottage development forever (??). Throw Pinawa some serious economic bones to make us feel good about it. Really have a good look at water safety. Don't want to say I told you so - none of us do.
14	PR	Neutral - the camp will have minimal local benefits but will have a positive provincial impact. The kids will need close supervision on the water due to the current.	active eagle nest close by will need to have no activity buffer - 200m. The area has potential for camp programs based on local archeological sites and land form. The park management plan seems to have been overlooked.
15	PR	Once the road has been built into the camp what is to stop large scale cottage development along the whole south west shore of Sylvia Lake? Have all necessary environmental impact studies been conducted?	
16	C, PR	I think the plan is good for all involved. The first being the children, the program and it would also be a benefit to the Eastern commercial and residential residents	
17	PR	good area for this type of camp	
18		good for the community	
19	PR	the location (proposed site) needs to be revisited due to the entire north shore along the channel is extremely dangerous for anyone!	simply reposition the property lines to enforce a buffer zone of safety and to ensure the safety of activities that will spill over the camp. Also the swin and boat (canoe) area would then increase along the east shore of Sylvia Lake.
20	PR	fast water behind porajaine (sp?) island. Teenagers will have to be extremely careful in fast current or they will tip over canoe in fast current.	a meeting should be held in Pinawa to address dangerous water. Have a springtime meeting in Pinawa since the camp is near Pinawa and boaters in Pinawa have a lot of fast water experience.
21	PR, CR	Great Choice!	
22	PR	Concern with situating the camp on the shore with a fast current	move the camp south on Sylvia Lake
23	BC, C, PR	as long as no other future development is allowed and if a bridge to Pinawa is built to provide access to the hospital for the campers. If the bridge was built then no road from 307 would be required. The bridge could be built near to the existing hydro line.	
24	CR, F	looks good! Go for it!	use local Canadian made materials for all buildings, equipment, furnishings and road ways. Specify Canadian made products through out.
25	CR	locate the camp on Sylvia Lake to face east where currents are less than the Wpg river	
26	O	camp of this nature have huge benefits for disadvantaged youth - one camping experience and some positive relationships can change a child's life. I was pleased to read about the advanced water/sewer system and other ecologically supportable responses.	
27	CR, C	Lets make it so!	
28		The leadership camp will not intrude into the park setting	
29	BC, O	Only if public concerns addressed re safety - site has steep cliffs and fast moving water, plan shows a boat storage area on north side . Motor boats have to travel close to that shore due to a rock reef, high pollution	move site away from north shore and place further south on the west shore of Sylvia Lake, gravel paths would be more suitable for a wilderness environment
30		beach area will infringe on a reed bed, may need chlorination, proposed boat launch and western camp buildings are within sight lines of Pinawa (west end of town), high speed boat channel close to the shore due to rocks, represents danger to campers	

Sylvia Lake Camp: Results of Public Review

Respondent #	How do you use Whiteshell Provincial Park?	Concerns and Comments	How might your concerns be addressed?
	Backcountry traveler (BC) Cottager (CR) Permanent Resident (PR) Hunter (H) Camper (C) Lodge Visitor (LV) Fisher (F) Business Owner (BO) Other (O)		
31	PR, F	our home is on a water view lot almost directly across from the proposed site. We moved here for the peace and tranquility of the area which would no longer exist. Fast water and the narrow channel on the north edge of the proposed site is a safety hazard for boaters and camp participants.	move the project to the south part of Sylvia Lake further from Pinawa or perhaps to Natalie Lake
32	PR, LV, F, BO	the south and west shores of the Winnipeg River along Sylvia and Natalie Lakes are as yet undeveloped, because there has been no road access. The Horton's road will allow cottage development along these shores from the swamp area in the west of Sylvia all the way to the south levees on Natalie. The camp is the "thin edge of the wedge" in terms of development	clear, formal and enforced policy of no cottage development as a result of the new road.
33		the process is flawed. Conservation staff admitted at the open house to undertaking the site selection on behalf of Hortons, so they are committed and no longer independent. There is no evidence of an environmental license/review process for the site, only for the physical performance of the sewage treatment. DFO and Heritage should be among the responsible authorities. The park development plan has been circumvented in the past to the extent that it is not a credible plan to guide future development such as this. In fact, justification offered by Conservation staff for this site was that there were 3 other such camps already on land classified in the same way as this site, even though that classification implies such development is not acceptable. How can a large development be allowed without a complete review of the park development plan?	better attention to due process for environmental licensing
34		there are strong inter-town teenage rivalries and a drug trade in Pinawa. Fights between youth in Pinawa versus Lac du Bonnet have at times been problematic, to the extent that "hunting parties" have gone back and forth. Bong sites in the bush in and around Pinawa have been common - although less lately maybe because the drug of choice has changed. Arrests have been made. The proximity of a large population of youth in the Horton's camp some of whom will be street-wise and looking for illicit adventures is a concern	some assurance that communication between the Camp and Town youth groups is a monitored and controllable if need be.
35		The Town of Pinawa may see some economic benefit from this camp. There is an anecdotal agreement that Horton's will procure supplies from Solo stores and ensure the sales are logged as through the Pinawa store (so its sales statistics look favorable even if the Pinawa store never handles the goods). There may be occasional outings of campers to Pinawa, and the 5 staff members and 100 temporary staff may include the people from Pinawa. However, the economic detriment has not been considered. The "draw" of Pinawa is as a safe community with complete facilities but also access to wilderness and undeveloped water. At present, the shores immediately upstream of Pinawa and undeveloped, a strong attraction for fishing and paddlecraft. Losing Sylvia Lake as an undeveloped hinterland lake will be to the detriment of Pinawa's attractiveness and hence economics.	No development
36	BC, PR, O, LV, F	The Winnipeg River has shown marked increase in algae load in the last 5-10 years, including suspended filament algae, adhering clumps and floating masses. This is clearly the result of the edge. The Winnipeg River has lower phosphorous (P) concentrations than the Red, but a high volume meaning that the Winnipeg River delivers an important amount of the Total P to Lake Winnipeg. A large development such as the Horton's camp should do better than meet conservation standards, it should strive to be zero release. The presently planned digester/weeping tile system is not sufficient - the high organic P flux from the sludge digester will quickly (decade scale) move through saturated soils of the site and reach the river. There must be something like an alum treatment followed by trucking of sludge off site. The assessment of this system should include a phosphorous balance calculation and should not rely on attenuation in the soil downstream of the weeping tiles. Attenuation in the local soils is short term, as is probably evidenced by the increased P loads in the river now - the upstream septic setbacks are not working.	Much more details on the system, and some assurance that the goal is better than the "standard" and near zero release. Evidence that sludge removal is integral to the system. Evidence from an installed system, including downslope groundwater monitoring results.
37	BC, PR, F, BO	At the open house at the park, Conservation staff informed us that this camp will have a large role as a staging area for backwoods experience trips, such as into Nopoming. I think this was presented as an indication that the camp might not be at full capacity much of the time because campers will be away on adventure trips. The end of a long dead end road seems a strange place for staging that then requires a drive. However, it does raise the issue of overnight camping by adventure groups from the Horton's camp on the islands and on the north shores of Crater Lake and the upstream channels and lakes. There is the occasional weekend camp now by the public - I assume without permission. If allowed to happen, overnight adventure camping markedly spreads the footprint of the Horton's camp and changes all the remaining undisturbed lakes.	Formal assurance, supported and enforced by Conservation, that no adventure camps or other overnight, water-access camps will be allowed on the as-yet undisturbed shorelines.
43	PR	I have lived in Pinawa for the last 7 years and I believe I know the area. I feel there are a few flaws in your concept, which need to be corrected. Map attached re info regarding water and air currents.	
44	PR, BC	destruction of habitat in park, location across from Pinawa will alter the town forever, boater safety, environmental impact, disagree with tax dollars being used for new road when there are existing locations with roads	
45	PR, O, C	agree to principle of camp but not convinced that this is an ideal location, impact on wildlife and environment, water safety issues, reasoning for an isolated location that is so close to Pinawa	contribution to Environmental assessment process, consideration of possible redevelopment of a previously disturbed site, rather than new road and development of the present, proposed site.
46	H, F, BO	good location - good for the area	

Sylvia Lake Camp: Results of Public Review

Respondent #	How do you use Whiteshell Provincial Park?	Concerns and Comments	How might your concerns be addressed?
	Backcountry traveler (BC) Cottager (CR) Permanent Resident (PR) Hunter (H) Camper (C) Lodge Visitor (LV) Fisher (F) Business Owner (BO) Other (O)		
47		in what capacity were the people from aboriginal communities involved in the development of the Sylvia Lake proposal? Which communities and who was involed? Are the people from these communities supportive of the Sylvia Lake development plan? If this development by the Tim Horton's corporation goes through it should directly benefit the people (aboriginal communities) who originally lived in or used the park area. How is the government going to ensure this happens? What is the government doing to protect the remaining spaces used by the caribou who were pushed out of there habitat?	Management plan need to put into place for Whiteshell Provincial Park that limits development and preserves our park for future generations rather than working with corporations for further development.
48		It is obvious that the ogvernment is going to continue to expend government resources to help a corporation take over part of our provincial park. Destroying the wilderness is the only plan put forward. MB Government is behind in updating management plan for the Whiteshell.	
49	BC, PR, H, F	Great - best thing to happen to seven sisters are in years. Hope the RM of Whitemouth helps out with the sewer and water.	
50	BC, O	Sylvia Lake is an undeveloped lake. We should keep lakes such as Sylvia, Crater, Numao and Tetu which are completely undeveloped to remain as such. History is abundant on the Winnipeg River. One day we will appreciate having protected areas that we can look upon in their natural state (as much as possible since hydro electric development on our waterway).	there is plenty of room on developed lakes for the addition of a camp. Make our current undeveloped sections of the Winnipeg River and its lakes a biological/historical reserve.
51	PR, H	no major concerns. Would like you to locate the road to the camp knowing that it might be extended to the river along the hydro line for a bridge crossing over to Pinawa. This has been in the planning stages for several years	
52	BC, PR, C, LV, F	I think the water current is very dangerous in this area. Very unpredictable, high traffic area and pollution are my concerns.	To relocate the camp to another area. Camp is a good idea - but this location just does not seem right - need a more wilderness area to get true experience.
53	PR	The proposed location is immediately adjacent to some of the strongest and most unpredictable currents in the Whiteshell due to the influence of the Seven Sisters Dam. The proposed location of the Camp is on a pristine, untouched section of the Whiteshell. Important fis species that breed in the area can be threatened, breeding species of wildlife disturbed, opening a road may lead to cottage development. Public Consultations should be conducted in Pinawa. Concern regarding the influx of people to the community.	
54		I wanted to email you to let you know that I think the proposed location fo the Tim Horton's Leadership Camp needs to be placed at a different location. Concerns: road/public cost, wetland disturbance, environment, on site waste treatment, garbage. Noise/light pollution, dangerous location, strong current, high boat traffic, over-stated expectations/benefits/jobs, ease of access to Sylvia Lake, future development potential	please reconsider
55	PR	I believe that this development will allow the Whiteshell area to become a more prosperous area. This can only benefit the local economies of communities in this part of the province. The idea of a camp for the underpriveledged youth who show signs of leadership potential is a great one! I have researched the Tom Horton's designs and the other camps established by this fine organization. There is an awareness of the ages of their charges; a realization that they needs to be in a secure environment but in a place that allows them to see nature in all its phases. I applaud Tim Horton's for its work and fully support their concept of a camp in my neighborhood. For those who oppose this idea, "what else is new?" There will always be those among us who are afraid of the unknown or want to keep their environment under a ficticious bubble titled "NIMBY".	To all those who will be working to give a chance to those who don't have the priveledge we have worked for, "Welcome!"
56		See attached email.	There must be other locations that have already been heavily influenced by humans that could serve as the camp site. Imagine using part of a clear cut site. Imagine the potential if generations of campers could document the return of a clear cut to become a climax population. This is no stale text; this could be a living laboratory with the documenting of the regrowth linking campers across the decades. Think of the potential for an underpriveledged child to see that new beginning are possible, and that carefully nutured growth can heal old wounds. The children benefit in the connections to themselves and to previous campers, creating the key links that cohere a society. A little bit of the wildness of Canada is preserved, and the wisdom of our thought can serve as a message to the future. Please oppose the Sylvia Lake location, and help this worthy cause find a better home.
57	PR, H, F	this proposed camp will change our shoreline and will do nothing to benefit the town of Pinawa. We do not need the camp or the prosped road.	check out the area where you want to put the camp - it is very dangerous with the fast current - you cannot canoe, kayak or swim there - not suitable at all for children
58	PR	very strong river current at suggested campsite; also close to an established campsite and concerned it will be in an undeveloped area and the impact on ecosystem	if the campsite could be put further back on the Island or another existing campsite and rebuild, we have rather a lot of campsites in the Whiteshell now, maybe take the campsite further north
59	PR	river currents close to suggested sight, developing a very prominent camp spot close to private camp site noise, roadway in will add to further development, environmental impact to an undeveloped area.	move site to safer place that's more discreet or make use of site with existing services and rebuild. Advantages to local area minimal as camp maintained from within system ie. Food supplied 60% by Tim Horton's balance dry bulk shipped in or expected to be donated locally.
60	CR, BC, F	I wish the Foundation the best of luck in overcoming any hurdles this time. Communities, the Park and children could all benefit.	Manitoba Parks needs to do a much better job communicating with the public. There seems to be too many surprises on several areas.
61	PR	new road development on Sylvia Lake and new development on the untouchd shore line of Sylvia Lake. Additional concerns in attached letter that was sent to Minister Blaikie before the Feb 16 meeting. Strong water currents and the impact of a new road, alternate location such as Eleanor Lake should be considered	Tim Horton's Foundation to reconsider the location of this proposed camp. There are numerous alternate sites that will have less environmental impact within or outside of the Whiteshell Provincial Park.
62	PR, H,F, O	Safety concerns: proposed boat dock between site and the Island to the north - this would literally block boat traffic. There is a rock reef at the mouth of this channel when you come out of Sylvia Lake. The channel is also very fast (water) with shear cliffs on the site sides. What will happen to the archeological sites on this point of land?	Move the entire site further south into Sylvia Lake. Don't build a boat dock on the north side. Research abandoned Bible Camp in the Matlock area, sonme of the infrastructure may still be servicable.

Sylvia Lake Camp: Results of Public Review

Respondent #	How do you use Whiteshell Provincial Park?	Concerns and Comments	How might your concerns be addressed?
	Backcountry traveler (BC) Cottager (CR) Permanent Resident (PR) Hunter (H) Camper (C) Lodge Visitor (LV) Fisher (F) Business Owner (BO) Other (O)		
63	BC, H, C	I think it is a great spot, close to civilization (Seven Sisters) and right in a wilderness setting. Water should not be a problem on this site as the RM of Whitemouth water system is not far away.	I have none, only to support if the NIMBY's give you too much trouble you might consider the Seig's Narrows point area. Less road to build and to go through the swamp you have the granite quarry just by the Park office and you are fairly isolated there but still on Sylvia Lake. SS sewer line is also close by.
64		Wilderness Committee submitted a proposal for a Public Cross-Country Ski and Snowshoe Trail at Sylvia Lake.	
65		I am opposed to the development of Sylvia Lake for a Tim Horton's camp.	
66		I am in favor of the proposed Tim Horton's camp on Sylvia Lake, near Pinawa. However, I would like to learn more about the development plan. This includes water treatment, road access and secondary development such as cottage lots. What is the cost to Manitoba Parks? What is the anticipated impact on the near-by water (Winnipeg River, Sylvia Lake, Eleanor Lake)?	
67	BO	The choice of location in Sylvia Lake remains the wrong one. The Province granted a buffer zone to the Town of Pinawa. The Tim Hortons location is within the LGD of Pinawa and this buffer zone. The solution is to move the location out of this buffer zone. The area in question is a common land use area. Once placing an easement on the land this common use area is gone for the 1600 closest citizens. Buffer zones are common in land use planning, I would believe that the planners can at least accommodate this aspect. Better still move the camp to an already developed area.	
68	PR, BC	I have no objections to the proposed location of the Youth Camp but I do have concerns. My biggest concern is the potential development of cottages that could follow. The area is already under siege by a surplus of motor boats in the summer, snowmobiles in the winter and hunters in the fall. My concern would be reduced if there were some way of restricting or (better) preventing access to the road leading to the camp and disallowing any development other than the Youth Camp. I live in the area (at Pinawa) and frequently canoe, kayak and sail in Sylvia Lake, and I have explored and hiked near the proposed site.	
69	PR	Attached pictures (swimming, sailing) are a small sample of my activities at Sylvia Lake last summer. I trust that I can continue to utilize Sylvia Lake after you build your new road and develop the shoreline. First a Youth camp, which I can agree with (but not this location), what's next? 200 or 400 cottage lots? If you build this road for the youth camp, what guarantees can the Province of Manitoba, Conservation Department give that other future development will not occur and turn this lake into a "Lee River" development?	
70	BC, PR	Sylvia Lake is a small lake and with all of the other boat traffic on the lake, it would not be safe. I would like to see the shoreline remain untouched by any development for all Manitobans to enjoy.	Consider moving the proposed Tim Horton's camp to a location that already has development on it.
71	BC, PR, O, F	Investing in youth is a hands down winner! I tried unsuccessfully to find information on this initiative at the web address given below.	Clarify the decision-making process. Clarify the benefits to local communities, if any.
72	PR	I am concerned that the Province is spending a large amount of money on building a new road (3.4km) when that money could be utilized for other social programs. I don't like the idea of building on an un-developed lake within the Whiteshell Provincial Park	Find an alternate location for the camp, that already has road access!
73	PR, CR	I am concerned about the strong currents in the location of your proposed camp that may harm your camp guests. I would like to see the Sylvia Lake shoreline remain un-touched for many generations to come.	
74	C, F	This is a non-conforming use of the park. It violates the Whiteshell Master Plan of 1983 with regards to all weather roads. It takes land from the public domain and turns it over to private enterprise. It opens up the possibility of cottages. Copy of letter attached to Minister Blaikie and Dave Newnham.	Tim Hortons could develop a camp outside of a park. The government should write a new master plan and solicit public input. The project should not be rushed through, as is happening.
75		I love the idea of the camp and how it's for the kids that are underprivileged, but I don't think that Sylvia Lake is the perfect place for this summer camp. Why you ask? You already may have heard about some of the issues, such as transportation, and noise...what I'm concerned about is the safety of the kids (near the water). Sylvia Lake is a place for fast moving waters. It may not be like that around the whole lake, but where your proposed camp is, it's an issue. I've gone sailing and boating around that area, and it isn't always pretty. If you really cared about the safety of the kids, you would move the camp near safer waters. If this camp proposal is accepted, I sure hope the kids are good swimmers.	
76	PR	We are not opposed to the idea of a youth camp but are opposed to the location. The granite outcrop of rock located in this area has some high elevations located adjacent to the fast moving Winnipeg River. This area could lead to foolhardy play possibly death of a son or daughter. Please consider this in your final analysis.	

Sylvia Lake Camp: Results of Public Review

Respondent #	How do you use Whiteshell Provincial Park?	Concerns and Comments	How might your concerns be addressed?
	Backcountry traveler (BC) Cottager (CR) Permanent Resident (PR) Hunter (H) Camper (C) Lodge Visitor (LV) Fisher (F) Business Owner (BO) Other (O)		
77		I am writing to express my DISAGREEMENT with the proposed Sylvia Lake Development. NO further development should be taking place within Whiteshell Provincial Park. Our parks are our place to go to escape the developed world and get back to nature. What you are proposing is the destruction of one of the last accessible wilderness areas in the Park. I must also express my discomfort with the lack of a publicly reviewed site selection process. I want to be able to see the process you followed, the selection criteria you used and all the other locations that were evaluated before arriving at the selection of Sylvia Lake. Until such a document is made public, I must assume that it was selected either at random (showing that the management team doesn't have a clue what they are doing), or selected specifically for the purpose of giving cottage developers access to the shores of the Winnipeg River in and around Sylvia Lake (showing the cowardliness of hiding behind a charity so they can meet their promise of more cottage lots in the province). Until a plan is developed and made available to the public, the uncertainty in your process is more than enough reason to halt it.	Furthermore, the frighteningly blatant avoidance of a Public Meeting in the LGD of Pinawa is suspicious and tactless. The proposed location falls within the borders of the LGD of Pinawa. I have town maps and copies of legal documents supporting that claim. Since the camp would be in Pinawa, PINAWA should have been the FIRST place a meeting was held. Putting it more than 45mins away in the Whiteshell, and over an hour away in Winnipeg is, in my mind, a deliberate attempt to minimize the actual amount of public consulting you had to do. People in Winnipeg don't know the area and the effect development would have. People in Pinawa do. Your entire process for site selection and public consultation is flawed, and is only serving to waste tax payer money every time you have to re-do it. If you want to move forward with any projects in the future with the actual support of the host communities, and not the apparent support coming from a very small percentage of the population, you need to change your ways, and fast. For these reasons, I will not support the development of Sylvia Lake.
78		Here is my comments regarding the proposed Tim Horton's camp at Sylvia Lake. I think an alternative location needs to be chosen. Road/public cost; wetland disturbance; environment - huge issues re on-site waste treatment and garbage; noise/light pollution; dangerous locations (due to strong/unpredictable current and high boat traffic area; over-stated expectations, benefits, jobs; loss of common public use areas; ease of access to Sylvia Lake; future development potential.	please reconsider
79	PR	As a resident of the community of Pinawa I am very concerned about the proposed Tim Horton's Youth Leadership camp being built on Lake Sylvia. While I admit that some of my concerns may be due to ignorance, and lack of information, I have found it very difficult to find accurate information as to how this will effect our community. This issue has come upon us very fast and has not given us time to properly formulate our public comments. As this has a potential to have a very negative effect on our community, I believe that a public information session should be held in our own community. Ample notice should be given to the residents of Pinawa for this meeting. In the meantime I would request that you postpone the March 22nd deadline date for public comments, and set the deadline to a time after the public consultation meeting in Pinawa. Please allow those of us in the community which stands to be the most effected by this development adequate time and information to process our views on this topic so that can come from a well informed position.	
80	PR	It is designated as LGD Pinawa Land. It is endangering wildlife and eco-system and drinking water. Their noise level will be horrendous. It will affect others use of the land and river	Let then go buy land themselves or move it where it least affects people/animals. It was given over to Pinawa for hunting safety and as a barrier - didn't take it on behalf of a corporation that can afford land of their own.
81	PR	Eco-system destruction, possible pollution of drinking water (Pinawa's supply). Animal habitat destruction, permanent noise pollution.	Put camp in an existing vacant camp site with existing road and facilities. Not use our tax dollars to relieve a corporation's bottom line. Not be influence by corporate wight-pulling and loss of use for all other people - it is supposed to be available. It is a part of LGD of Pinawa for a good reason - don't take it away. Why should the residents (permanent) be considered as an afterthought? (to corporation's marketing)
82	PR	it belongs to LDG Pinawa, possible pollution of river from run-off, noise - affects people and animals, destruction of habitat -affects animals, too many people in one location and travelling around the area at once.	Move it to another camp already in place, or make them go elsewhere where there are no people they will affect (or animals or trees).
83		Continuation email from #79 - As an alternative I suggest that Tim Horton's place its kids camp in an already existing kids camp site; perhaps one that cannot afford to operate any longer or is willing to sell their already developed property. I do not disagree with what the Tim Horton Foundation is trying to do for underprivileged children; I just think it can be done while still protecting our parkland.	
84	PR	As a university student studying conservation who grew up in Pinawa, it is my opinion that the development of a Tim Hortons Foundation Camp would only bring with it undesired impacts. This is to be built in a section of the Winnipeg River which is one of the only ones in the region on the south side of the river to be free of development, it hosts an abundant amount of wildlife, and provides a huge amount of recreational opportunity for the residents of Pinawa. I realize this is sounding like a not in my back yard type of letter, however I am positive that there are many other locations that could be available where the environmental impacts could be significantly lessened, as well as be more welcomed by the host community. As Pinawa is one of the only communities in Manitoba that feels it is being exploited by tourism I am sure there are alternatives in regions which would welcome any sort of economic prosperity, it is my opinion that the residents of Pinawa do not want this camp to be put in place, nor are the economic benefits required in the region, please suggest that Tim Hortons finds a more "win win" location for the development of their camp.	

Sylvia Lake Camp: Results of Public Review

Respondent #	How do you use Whiteshell Provincial Park?	Concerns and Comments	How might your concerns be addressed?
	Backcountry traveler (BC) Cottager (CR) Permanent Resident (PR) Hunter (H) Camper (C) Lodge Visitor (LV) Fisher (F) Business Owner (BO) Other (O)		
85	PR	My spouse and I are residents of Pinawa who support the proposal to develop a Tim Horton's youth camp at Sylvia Lake, and we do so for the following reasons. First, the municipal revenue and work force of Pinawa is still overwhelmingly dependent on one source: Atomic Energy of Canada Limited (AECL), which is currently in the process of decommissioning its plant site in the effort to wind up operations here in roughly 20 years time. Over the past 20 years AECL has also done little to support attempts to diversify the economy of the town, and I don't think most of my neighbours realize how difficult or necessary such diversification is. Personally I think the best (but not only) prospect for the town is to become more of a service centre to the north Whiteshell region, similar to Lac du Bonnet's success as a service centre for its own cottage hinterland. Quite frankly, the best way to enable this would be to have a bridge across the narrows west of Pinawa where currently a hydro line crosses and runs down the west side of Sylvia Lake to the Whiteshell Provincial Park gatehouse on PR 307.	Certainly building a proper road up to a camp on the northwest side of Sylvia Lake would be a good step in that direction. Pinawa currently offers a regional hospital, pharmacy, credit union and decent grocery store, which are not available along PR 307. What might develop with greater access to existing and hopefully new cottage subdivisions is a small building supply business and more contractors to serve a slowly growing market including more retired and year-round cottagers. Given improved convenience and larger populations, other opportunities might be developed as well, as a small handful of entrepreneurs have done over the past 20 years, in spite of the obstacles, to serve markets on both sides of the river. Some people I know are unhappy with the prospects of losing undeveloped areas, but I think this could be offset by the protection of other areas by expanding the park boundaries. For example, only a small part of the Whiteshell's northern boundary is limited by Nopiming's southern boundary; the rest should be investigated for possible expansion. Regarding the site itself, I have learned over the years that when developing a waterfront it is preferable to leave the other side undeveloped. Assuming the camp is fronted on the west side of Sylvia Lake (rather than the south side of the Winnipeg River facing Pinawa), this site is particularly well-suited for such development. Using the shoreline there would also minimize the risks that may be presented by landing boats (or swimmers) in the current as the Winnipeg River enters and exits the lake. I could probably go on, but I think it's probably most useful to keep my comments limited to these key points. Please consider them and the long term prospects for the communities in the area, not just the way things are today (or even less relevant - the way things used to be one or two generations ago), when making your decisions regarding this site.
86	PR	Comments and Concerns Regarding the development of a leadership camp at Sylvia Lake. I am opposed to such a development at the proposed site. I am a homeowner in Pinawa (Pinawa Landing) and a recreational user of Whiteshell Park. The following are just some of my many concerns regarding this project. While I believe the idea of developing such a leadership camp in Manitoba is a good one, I cannot support it being developed in the Whiteshell Park, and certainly not in the proposed area, for a number of reasons including: -The size and the scope of the site: 100 staff plus potentially 300-400 youth at any given time at any time of the year. It is equivalent to that of a small town and despite best efforts will have significant impact to the area and to others who use the area (eg. canoeists). -Little thought seems to have been given as to choosing a site ... this seems to almost be a done deal without prior consultation with the public. -There should be no development even considered in the Whiteshell until there is a current, up to date management plan to discourage this piecemeal approach to development.	Sylvia Lake is one of the few lakes located within the Whiteshell which does not have significant G98-This pristine shoreline will be spoiled for other users due to the large size and number of buildings.-There are several archeological sites within or close to the proposed camp.-The construction of an access road, hydro right of way, parking lot, wastewater treatment area, building site etc. will greatly impact and destroy habitat. -The site is located within a Resource Management Area / Extensive Recreation Zone which, according to the current management plan permits only minimum impact activities and infrastructure, therefore the area would have to be re-zoned in order to accommodate this development -Building / development is being restricted in other areas of the park. -Allowing this development to proceed will open up the door for other groups / developers. It won't be a "one off". -There will be few local benefits. Most personnel and supplies will come from elsewhere.
		" Recreational Development (RD) Size: 48,280 ha or 18% of the park._ Provides a range of intensive recreational facilities including campgrounds, cottage subdivisions, horseback riding, day use areas, hiking and cross-country ski trails, canoe routes, sport fishing, and snowmobile trails. Permits commercial resource use while recognizing the recreational values of the park. Resource Management (RM) Size: 126,860 ha or 47% of the park._ Provides recreational opportunities including canoe routes, sport fishing, hunting, snowmobile, hiking and cross- country ski trails,_ Permits mining and wild rice harvesting." - "Existing uses which do not conform to [those] permitted in a particular zone are regarded as nonconforming. Such uses will be limited to presently existing developments." Whiteshell Provincial Natural Park Master Plan. 1983.	
87	PR	I am not in favour of a Tim Horton's camp at Sylvia Lake in Whiteshell Provincial Park. The Whiteshell is already a heavily developed park and I don't believe it is appropriate to expand development into areas that currently are undeveloped. Sylvia Lake is one of the few lakes on the Winnipeg River within the Park that does not have some form of cottage or campground development. I think it would be a terrible shame to begin developing an area that is untouched and yet easily accessible for people to reach and enjoy. Development here would spoil the character of this pretty and unspoiled area. As I understand it there are a number of abandoned camps within the park and outside it that I feel could be considered as alternatives to Sylvia Lake. There is also an area on the North side of the river downstream of the Pinawa Campground where a camp could be located. Although it would still require building a road, there is already development nearby yet I think it would be less intrusive to the town and more private for the camp. It also has the advantage of safer water (less current) and better access to services from the Town of Pinawa.	I would also like to say that I am discouraged with the public consultation process. I feel that an information session should have been held in the Town of Pinawa considering the close proximity and potential impact to the town. One badly advertised session tucked away at Pinewood Lodge and one in the City of Winnipeg seems quite inadequate. The impression this process gives is one of secrecy and a lack of respect for the views of rural Manitobans whether they are for or against the camp. I think that Manitoba Conservation should hold off on any decisions until an open consultative meeting is held in Pinawa.
88	PR	I am opposed to the proposed Youth Camp on Sylvia Lake. My reasons and comments echo those detailed in a well written letter to the editor of the Pinawa Paper. By now we have all heard about the proposed development of a youth leadership camp at Sylvia Lake, directly across from Pinawa. But for most of us, that's about all we have heard. Despite the controversy of the issue, many Pinawa residents still have very little information regarding what exactly is being proposed. Two information sessions were held to give the public an opportunity to learn about the camp, and ask questions. One was held in Winnipeg, and one at the Pinewood Lodge in Whiteshell Provincial Park. Attendees were encouraged to submit their comments and concerns before the March 22 deadline for public comments. At the Pinewood Lodge session, we asked why they opted to build their camp on the shores of Lake Sylvia, so close to Pinawa. Although they did not have an answer that suggested they were following any kind of selection planning process, they did mention that the proximity to Pinawa's hospital was a part of the reason they chose to build so close.	Of course, that makes sense. But if Pinawa is to play a supportive role in the success of the camp, why was this information session not held in Pinawa in the first place? We posed that same question to the representatives at the session at Pinewood Lodge, and they told us that they had considered it, but ultimately decided against it. This question had also been raised with Mayor Skinner, who reported in The Paper that he was planning on having a session in Pinawa soon and that we would be notified "well in advance." Two weeks have passed since that announcement was made, and as we write this article, no new information has been given. Surely such an information session would have to occur before the deadline for public comments on March 22nd. Otherwise, what is the point? If Pinawa is to play a part in all of this, we should not have to ask them to come and talk to us about it. Let us be clear, that we do not oppose the idea of a camp for underprivileged youth. What troubles us is the seemingly secretive way in which the site was selected. We are concerned that the lack of proper planning will have an adverse effect on our park and our town, now and in the future. We have questions that need to be addressed immediately, while we can still submit our opinions to the management committee overseeing this project.

Sylvia Lake Camp: Results of Public Review

Respondent #	How do you use Whiteshell Provincial Park?	Concerns and Comments	How might your concerns be addressed?
	Backcountry traveler (BC) Cottager (CR) Permanent Resident (PR) Hunter (H) Camper (C) Lodge Visitor (LV) Fisher (F) Business Owner (BO) Other (O)		
		<p>Questions like: What process did they follow to select this location? What selection criteria did they use in their decision? Is there an ulterior motive behind the location selection (eg for cottage lots promised by Provincial Government)? Why are they building within LGD of Pinawa boundary? Does this compromise the buffer zone that land was intended to be used as? Are there not better locations that will serve the needs of the camp, without having to build a new road which will destroy wetland and give cottage developers access to one of the last cottage free shorelines on the south side of the Winnipeg River. As residents of Pinawa who will be expected to share emergency services with the camp, and any future development that comes with it, we feel discouraged for being so blatantly overlooked in this public consultation process. Even if our concerns can be mitigated, leaving Pinawa residents out of the loop serves only to create opportunities for speculation and rumour that can only do harm to their cause. If they want our support, they should engage our community directly.</p>	
89	PR	<p>I disagree with the proposed development of a youth leadership camp at Sylvia Lake based on a number of issues. 1) Dangerous Location; The proposed location is set high up on a rock shelf overlooking the Winnipeg River. As an experienced paddler, rower and kayaker I know this location to be frequently dangerous due to the fast moving water. In the last two years I have had difficult paddling and rowing into the channel due to the fast water. Kids cannot be supervised 24 hours of the day. Accidents do happen. I believe that there is a HIGH risk associated with a camp at this location. In addition to fast moving water this location is surrounded by rock that when wet is VERY slippery. Fast moving water coupled with slippery rock when wet will be dangerous for kids. 2) Lack of Confidence from the Planning Committee: At the public Consultation David Newnham indicated that he was aware of the dangers of the fast moving water (and had in fact seen the fast water in June/July) and that they chose the location based on the fact that there is "risk everywhere you go" and that it was an issue of "risk management".</p>	<p>3) Destruction of Wildlife; I disagree with the proposal to develop this land when there are other available sites in the Whiteshell Park and other parks. For example there is an abandoned camp at Big Whiteshell that is not being used. 4) Secrecy and Lack of Explanation; I am disappointed by the lack of openness in this entire process. There has been no attempt at detailing other locations that have been selected and why they have been overlooked. It was stated at the public consultation that the choice to build so close to Pinawa was access to the hospital. I am disappointed that the town was not consulted directly if it is supposed to play a supporting role for the youth camp. The planning committee was asked why a public consultation session was not held in the town of Pinawa if we are to play a supporting role, and since the camp will have the biggest impact on our recreational areas. David Newnham stated that this was "considered but ultimately we decided against it". This secrecy and avoidance of Pinawa only serves to create distrust and rumours.</p>
		<p>I feel that the planning committee is therefore risking children's lives by choosing this location over simply moving their desired location further south into Sylvia Lake. Despite knowing of the dangers of the fast moving waters early in summer 2009, the planning committee showed up at the consultation meeting on February 16, 2010 with information boards depicted a dock sticking out into the fast moving waters of the Winnipeg River. He then claimed that the dock "probably wouldn't be there" in the final design. In my opinion this oversight demonstrates a lack of forethought in the planning process. The wastewater treatment system shown on the information boards is designed for single household use. It will not serve a youth camp of 260 children adequately. This is a poor attempt by the planning committee to appear prepared. At the public consultation it was stated that they would be building a beach for the children. It is my understanding that this would destroy important fish breeding grounds at the location of interest.</p>	<p>5) Lack of Management Plan for Whiteshell Park; It is incredibly discouraging that an updated Management Plan for the Whiteshell Park has not been produced. And that Mantioba Conservation is proposing further development in the park despite the previous management plan stating that the Whiteshell Park has been developed to capacity. My concerns may be addressed by selected an EXISTING / abandoned camp to be developed. There is absolutely no need to develop further land in the Whiteshell Park.</p>
90	PR	<p>Camp Leaders & Camp youth campers should read a map of the wates of Whiteshell Park and go out in canoe's only when they know where all the fast current is located. Sylvia Lake is not a good choice, proposed dock would interfere with motor boat traffic</p>	<p>consider building TH camp on the South west shore on Sylvioa Lake furthre down where the water is much calmer</p>
91	PR	<p>I sincerely think that it's a wonderful opportunity for our government to show support to an excellent organization.</p>	<p>By letting others know that other provinces have given their total support to the Youth Leadership Camps.</p>
92	O	<p>Benefits: another model of green building design; jobs for Eastman youth. Concerns: wilderness shoreline, whiteshell prov park needs a current plan for land use</p>	<p>protect wilderness shoreline by establishing a 100 ft buffer similar to public reserve on Pinawa's shoreline; develop park plan by 2011. I recommend Mandala Custom Homes, Nelson BC for building Yurts. They built my Yurt style home in Pinawa.</p>
93		<p>I am writing to voice my concern about placing a Tim Horton's Camp at Sylvia Lake. I am very much opposed to the idea. I am not opposed to the camp itself but there are already developed sites where they could put it. I am though very concerned with the fast diminishing green spaces. If we are to have any wildlife left in Manitoba let us leave them some place to live.</p>	
94	PR	<p>I am writing to oppose the development of Sylvia Lake for the Tim Horton's Camp. I vehemently oppose it for several reasons, including safety, and environmental disturbance. But of significant importance, is the fact that this development does not fir within the parameters of the Whiteshell Management Plan. A government department should not fail to follow their own plan.</p>	
95		<p>Copy of letter from RM of Whitemouth to the THCF offering their support and to discuss water and sewer services to camp</p>	

Sylvia Lake Camp: Results of Public Review

Respondent #	How do you use Whiteshell Provincial Park?	Concerns and Comments	How might your concerns be addressed?
	Backcountry traveler (BC) Cottager (CR) Permanent Resident (PR) Hunter (H) Camper (C) Lodge Visitor (LV) Fisher (F) Business Owner (BO) Other (O)		
96	PR	<p>I am sending in this letter to let you know how much I DISAGREE with the proposed Tim Horton's camp on Sylvia Lake. For such a large, well known company, Tim Horton's has shown nothing but disorganization and cowardice towards this development. It seems that it just popped up out of nowhere and no one was informed of it properly. How can you choose such a spot in so little time? It seems to me that you people have not even been there to check it out, it seems like it was just chosen at random, which is not to the liking of many people. Also, since in the area IS in the LGD of Pinawa (maps and documents are available to prove this fact), why was a public meeting not held in the town? Why was it held in the Whiteshell Park, 45 minutes away? Or, even worse, in Winnipeg, almost 2 hours away? You say you wanted to get the people of Pinawa to be aware of this camp, yet you did almost everything you possibly could to avoid the town. It's almost as if you went into hiding to try to get people to forget about it.</p>	<p>A very cowardly act on your behalf. I am not against a camp for underprivileged children. In fact, I am all for it. I am just not for having it in that specific area. Sylvia Lake is one of the last undeveloped lakes on the Winnipeg River, why in your right mind would you want to take that away? You say you are trying to preserve wilderness when you reality, you are taking it away. It makes no sense. There are a large number of camps in the Whiteshell that are no longer being used. Why don't you just go and use one of those? It would be faster to renovate, not to mention cheaper. I went to the meeting at Pinewood Lodge in the Whiteshell Park and the representative there kept saying over and over "this camp is to get children to appreciate nature". Then he showed me what the camp looked like. That is not a camp, it's a mansion. I have been to real camps when I was a child, and they were NOTHING like that photos I saw. It was absolutely ridiculous. No mansion is going to teach kids how to appreciate nature. Why you have to be so sneaky and cowardice is beyond me, but it's very childish and your organization needs to rethink their action plans before anything gets done anywhere. I will NEVER support you building on Sylvia Lake.</p>
97		<p>It's very disturbing to develop another recreational park that would serve only a few at the expense of destroying the natural habitat of wildlife. We have several developed parks that would cater to the people's want (not needs), hence restructuring a natural environment would only be destructive both for the animals and people in the long run. Let us preserve the nature we have, for the sake of our future generations to explore and limit re-development of non-essential parks that would only benefit a few individuals and private entities. I definitely do not agree with this Sylvia Lake Development.</p>	
98		<p>Provincial parks are for everyone to enjoy. Parks should be places where we preserve, not develop. Development should be limited to public services. A private camp that you can not access does not serve the greater interest of Manitobans. A park plan was supposed to be updated 17 years ago, in 1993. The 1983 park management plan already acknowledged the Whiteshell was developed to capacity.</p>	
99		<p>I am writing this on behalf of my father. The advertisement in the paper did not supply a phone number or mailing address, just an email address, and he does not have a computer. He has some concerns regarding the proposed Tim Horton's Camp on Sylvia Lake which were not addressed in the meeting at the Pinewood Lodge at Dorothy Lake. He was unable to attend the meeting in Winnipeg. His concerns are as follows: where would the camp's water supply come from and how would waste water be disposed of, what plans are in place to avoid the potential for strain on EMS, police and hospital resources during peak season, during the school year, will the children be schooled at the camp and if not, why would they be allowed out of school, the proposed dock will block the channel due to a reef coming off the adjacent island and why aren't Tim Horton's and/or Government officials holding meetings in the Town of Pinawa, the town closest to and most affected by this camp? He would greatly appreciate a response to his concerns either by telephone (204 753-2236) or by mail (Mr. Ron MacLean, Box 77, Pinawa, Manitoba R0E 1L0).</p>	<p>Sue Atkin contacted Mr. MacLean and requested Mr. Newnham to respond as well.</p>
100		<p>At the WCA meeting on March 17 Mr. Blaikie advised that he was unable to take key questions from the floor and did comments that essentially the subdivision development in the Whiteshell remains frozen; it is clear that if there is ever to be a thawing it has to come from the Ministers Office...with perhaps some direction from the Department. What is happening with the sewage, solid waste, removal of trees? The Lake can take a subdivision and MB Conservation can have cottage lottery draws.</p>	
101		See attached letters to the Minister	
102		See attached letters to the Minister	
103		See attached letters to the Minister	
104		See attached letters to the Minister	
105		See attached letters to the Minister	
106		See attached letters to the Minister	
107		See attached letters to the Minister	
108		See attached letters to the Minister	
109		See attached letters to the Minister	
110		See attached letters to the Minister	
111		See attached letters to the Minister	
112	PR	<p>I heard that this location is actually in the LGD of Pinawa. Does this mean that the Tim Horton's Camp will have to pay school taxes to the school division there?</p>	

Sylvia Lake Camp: Results of Public Review

Respondent #	How do you use Whiteshell Provincial Park?	Concerns and Comments	How might your concerns be addressed?
	Backcountry traveler (BC) Cottager (CR) Permanent Resident (PR) Hunter (H) Camper (C) Lodge Visitor (LV) Fisher (F) Business Owner (BO) Other (O)		
113		I think having a youth camp in the area is an excellent idea. I have a couple reservations about the location though. I haven't seen any information regarding the environmental impact of building the camp. I feel that major construction inside a Provincial park should not be allowed. The Provincial park should be there to conserve the area. Have other locations been considered? What about areas off of PR 520? This would give better access to services for staff at Pinawa or Lac du Bonnet, while still keeping the camp in a remote area. I enjoy the outdoors (hiking, canoeing, mountain biking, trail running, you name it!) and I personally find the trail system in this area much better than what is available in the Whiteshell Provincial Park. It would also put the camp in close proximity the old pinawa dam provincial park, so there is still an opportunity for learning. My second concern is regarding the water safety. I think the proposed area is too close to strong current, and is not suited for a camp that attracts people with little previous experience on the water. I myself am not a strong paddler, and avoid this area unless with someone who is very experienced.	
114	CR, C, BC	I am not against the idea of an underpriveledged children's camp in Manitoba however I am against the proposed location. Park should be protected and no more development take place. Already 5 accredited camps in the Whiteshell. Water current at proposed location is very strong and the water very cold.	
115		The concept of establishing a camp for underpriveledged youth is a good one but the Sylvia Lake location is a bad one. The current at the proposed location can be very high, creating dangerous eddies; Lake Sylvia is one of the few pristine locations downstream of Lake Nutamik that does not have cottage development; new access road would encourage further development	
116		Worked for many years with inner city youth and feel the camp is a great idea but the location is not. The water currents are too strong and safety should be a major concern.	
117		I have concerns with the proposal of a camp by a very large corporation being set up in a Provincial Park. The land should be there for everyone to enjoy. Camp is a great idea but not in a Provincial Park, leave the pristine land for all to enjoy.	
118	CR	Park is already at capacity and receives some of the largest amounts of visitor traffic as well as campers compared to any of the other provincial parks. Sewage lagoons are at capacity, government is cutting services but willing to pay for new infrastructure? Until a new park management plan is performed any development within the park would be imprudent.	Look at alternate locations - perhaps another park. Perform an updated management plan and after then see if Sylvia Lake would still be a viable option.
119		I do not agree with the proposed development. While the Tim Horton's camp is a valuable experience for youth, I strongly believe that the camp should be situated on a more developed piece of land. We need to leave our provincial parks alone - free of more development than they already endured.	
120	PR	Tim Horton's camp is a great idea - just not a Sylvia Lake. The wildlife is abundant at Sylvia Lake and the Eagles can be seen all the time. Building the camp at this location will drive the animals and birds away.	
121	O	Letter of support from the Eastern Manitoba Tourism Association. The board of EMTA unanimously felt that the socio-economic impacts and the benefits to the youth are both very positive.	
122		I do not agree with the plan to build a Tim Horton's camp at Sylvia Lake. This is a pristine environment which should not be built upon. Surely there are other areas with existing roads and facilities that could be utilized?	
123	O	Letter of support from the Eastman Regional Development Inc. (ERDI). The board of ERDI unanimously felt that the socio-economic impacts and the benefits to the youth are both very positive.	
124		I have changed from being opposed to in favour however, 3 things need to be rectified; public information and input must be solicited in the closest town, Pinawa. Public access to the "jumping" rock must be maintained and the current, wind shadows and the rocks at the current location are very dangerous for sailors. The locations must be moved to a safer, closer spot such as the South End of Sylvia Lake.	

Hummelt, Cathy (CON)

56

From: David Long
Sent: March 2, 2010 11:15 PM
To: +WPG1212 - Management Plans (CON)
Subject: Opposition to Sylvia Lake development

I am writing because of a concern I have with the location of a Tim Horton's camp on Sylvia Lake in the Whiteshell.

A Park like the Whiteshell is a place where people can receive the benefits of nature. Indeed, there has been clear-cut logging in the park, and the economic spin-offs from tourism benefit local populations and the people of Manitoba as well. Through custom, people expect to use Whiteshell Park. I myself have had the opportunity to visit the Whiteshell many times in my youth, and as an adult, and I have benefited from the access to this magnificent region. I cannot then in conscience, wish to deny others the same pleasures I have had. Nonetheless, I have to record my opposition to the particular location of Sylvia Lake. Previous history of use of a park does not imply that all parts of it are equally "For Sale".

My concern is not with the worthiness of the idea. As a teacher, I am a strong proponent of opportunities for children, and I appreciate the opportunities that a camp may make to the lives of children who do not often have the chance to see wilderness. I am not a cottager in the Park, and my opposition is not a case of NIMBYism, nor of elitism. Rather my concern regards safety and ecological issues, and the philosophy of parks.

There are some safety concerns in the area. Especially, there are very strong currents near the entrance to Sylvia Lake and even for experienced boaters and canoers, caution is advised. Deliberately building a camp nearby may not be the wisest course. Think of the negative publicity for both Tim Horton's and the people who grant approval to the project a child should die when the dangers were known before ever the camp was built.

There is another, less prosaic reason for opposing the development. A vital role of parks is to retain some of the wildness and spirit of the land that shapes us all as Canadians. Sylvia Lake is not 'remote', but it remains very largely undeveloped. Sylvia Lake is currently an oasis in the midst of the development of the Park, and creating a road and a camp will degrade still further the very thing we are trying to preserve.

Roads lead to increased access, habitat fragmentation and increased ecological pressure. The area nearby is habitat for the Great Grey Owl, the Provincial bird, and there are wetlands and undisturbed areas all around the lake. These are the areas that provide the buffer for water purification. These are the areas that provide a repository of genetic diversity that may serve to mitigate against some future environmental or human caused catastrophe. This is one of those regions that may serve as a carbon sink; sequestering for some time the carbon dioxide we release. Sylvia Lake is one of the areas that provides a testament to humanity's capacity to think long-term. Its very presence sends the message that people can overcome, sometimes at least, the lure of instant gratification. The preservation of regions like Sylvia Lake are essential not only to the workings of nature, but the spirit of us all.

There must be other locations that have already been heavily influenced by humans that could serve as the camp site. Imagine using part of a clear-cut site. Imagine the potential if generations of campers could document the return of a clear-cut to become a climax population. This is no stale text; this could be a living laboratory with the documenting of the regrowth linking campers across the decades. Think of the potential for an underprivileged child to see that new beginnings are possible, and that carefully nurtured growth can heal old wounds. The children benefit in the connection to themselves and to previous campers, creating the key links that cohere a society. A little bit of the wildness of Canada is preserved, and the wisdom of our thought can serve as a message to the future.

Please oppose the Sylvia Lake location, and help this worthy cause find a better home.

Sincerely,

2010-03-03

Dr. S.C. Sheppard

COPY

Dear Dr. Sheppard:

This is in response to your email to the Honourable Bill Blaikie, regarding the Tim Horton Children's Foundation Youth Camp proposal at Sylvia Lake in the Whiteshell Provincial Park.

There were two public information sessions held to provide the public with the opportunity to comment on the proposal. Many residents of Pinawa attended and provided individual comments at these meetings. These sessions were held on February 16th, 2010 at the Pinewood Lodge in the Whiteshell Provincial Park and on February 17th, 2010 at the Canad Inn Polo Park in Winnipeg.

I appreciate the concerns that you have brought to our attention. Your letter will be included with comments received at the public information sessions, as part of the review process, before a decision is made.

Thank you for your interest in Manitoba provincial parks.

Yours sincerely,

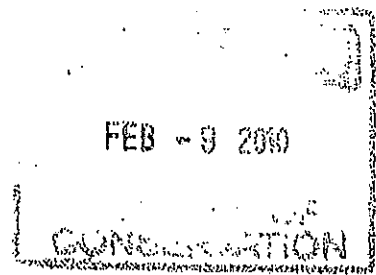
John Irwin, Director
Eastern Region

- Cc: Honourable Bill Blaikie
- Bcc: Fred Meier
- Bruce Bremner
- Barry Bentham

1000.32

Rt Hon. Bill Blaikie,
Minister of Conservation
Room 330, Legislative Building
450 Broadway
Winnipeg, Manitoba, R3C 0V8
mincon@leg.gov.mb.ca

Feb 8, 2010



We, a group of environmental scientists living near the Whiteshell Park, are writing about the proposed Tim Horton's Youth Camp, recently announced for development on the west shores of Sylvia Lake, Whiteshell Provincial Park. We foresee many specific issues that we believe must be addressed; the most likely place for doing so will be through the Environmental Assessment (EA) process that will no doubt be necessary before the proposed project could receive regulatory approval. We are writing now so that the proponent and their assessment team have time to adequately address these issues, hopefully before the public meeting and the hearings so that the public can be fully informed. We ask that you require this to be an open process that will solicit and respond to stakeholder input and will deal specifically and quantitatively with the issues. There is some concern about due process at the moment. Before listing these issues, we should like to go on record that we are completely supportive of the idea of the proposed camp inasmuch as we recognise the potential societal and personal benefits to those youths fortunate enough to attend the Tim Horton's Camp. We find the issues regarding the proposed location focus on three areas.

1. SAFETY

The site of the proposed camp has some steep cliffs leading into fast moving water. The currents exceed the maximum burst swimming capacity of most people. In all three inlets/outlets to Sylvia Lake, the fast water moves a swimmer to the middle of the channel, far from help. As a result, there is a water safety issue that is more significant here than at many other sites along the river. Indeed, in recent years there have been capsizing and sinking of several smaller-sized watercraft due to these high velocities (one was an RCMP officer and her young son). Additionally, because of a submerged rock shoal, fast motorboat traffic is restricted to and occurs within 10 m of the north shoreline of the proposed Camp.

2. SOCIAL

Pinawa is the nearest community to the proposed site, ~600 m across the water. Public consultation in Pinawa prior to approval is necessary. Further, the access road to this area of the shore will open the potential for cottage and other development downstream from the Camp site, either immediately, as a revenue source in a few years, or as the outcome of closure of the Camp. This has social, economic and environmental implications, but of course could be mitigated with a clear and formal Park policy restricting such future development. In terms of archaeological heritage, there have been artefacts found along the shore that are now at The Manitoba Museum.

3. ENVIRONMENTAL

Sylvia Lake is untouched by shoreline development with the exception of an overall increased water elevation more than 50 years ago. As such, this site is relatively pristine. Eagles, loons and osprey are present, and their use of the lake would be impacted by a permanent facility. There is an issue about fish habitat, which is administered under the *Federal Fisheries Act* so that DFO may need to be involved as a *Responsible Authority*. The only beach site available for the camp hosts significant nursery habitats for many species of fishes and the site is probably close to the downstream home range of the Winnipeg River population of *Acipenser fulvescens* - Lake Sturgeon. Pinawa finds it must chlorinate its beach, and the Tim Horton's Camp may have to do this too, which is an impact planners may not foresee.

Phosphorus loading must be avoided: the river has experienced markedly elevated algae growth in recent years, as suspended filaments, floating 'blobs' and adhering masses. The impact is notable in the filtration requirements in Pinawa. It would appear that present P mitigation upstream is inadequate. As a result, the sewage management system for the Tim Horton's Camp should approach zero emission.

In summary, many of these issues can be mitigated, but only if properly identified and quantified. We expect this to be part of an open, consultative and transparent environmental hearings process before licensing.

Sincerely,



S.C. Sheppard, PhD, CCEP

On behalf of a group of scientists of the Pinawa region

cc. Mr. Greg Sellinger: Premier of Manitoba

MAR - 2 2010

COPY

Mr. John Trueman

ROE ILO

Dear Mr. Trueman:

Thank you for your letter regarding the Tim Horton Children's Foundation Youth Camp proposal at Sylvia Lake in the Whiteshell Provincial Park.

Two public information sessions were held to allow the public the opportunity to provide comments on the proposal. These sessions were held on February 16th, 2010 at the Pinewood Lodge in Whiteshell Provincial Park, and on February 17th, 2010 at the Canad Inn Polo Park in Winnipeg.

I appreciate the concerns that you have brought to my attention. They will be included along with the comments received at the public information sessions as part of the review process, before making a final decision.

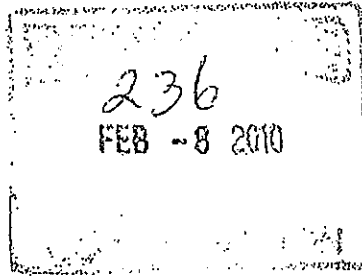
Thank you for your interest in Manitoba provincial parks.

Yours sincerely,

ORIGINAL SIGNED BY
BILL BLAIKIE

Bill Blaikie
Minister

Bcc: Fred Meier
Bruce Bremner
Barry Bentham
John Irwin



1988 27

Hon/M. Bill Blaikie, MLA
Conservation Minister of the Manitoba Government
330 Legislative Building, 450 Broadway
Winnipeg, Manitoba
R3C 0V8

John Trueman and Family

ROE 1L0

Dear Sir,

I am writing you in regards to the Manitoba Government Conservation Department announcement of a new development (Tim Horton Park) at Sylvia Lake within the Whiteshell Provincial Park, Manitoba, Canada. We do not believe that you made the right choice for the "Tim Horton Park" location. As with your first proposed site, at Meditation Lake (and subsequent commencement of a new road construction before any public consultations), there are many environmental issues that have not been considered with this location on Sylvia Lake. We do support the need for a camp location for "underprivileged Manitoba Youth"; however the proposed Sylvia lake site is not a good match for the camp's requirements.

As you are aware Sylvia Lake is located within the Whiteshell Provincial Park on the Winnipeg River system. The Lake is small, approximately 2 kilometers long by 1 kilometer wide. There is no development of any kind on Sylvia Lake, although the summer time boat traffic is beyond its capacity, with boat users from the cabin owners/campgrounds upstream of Sylvia Lake, Pinawa campground and Pinawa residents. River currents are very strong at the proposed site, any future water activities at this location will be potentially dangerous.

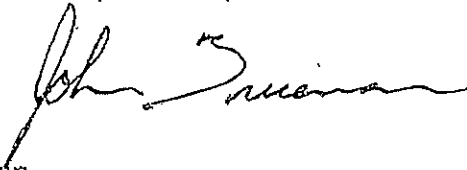
Your proposed Sylvia Lake location would include a new 4.5 km road to the new site. Why would you plan for a new road that will cost + \$5 million (based on know current road construction costs) + the environmental impacts of such a road. An alternate location in close proximity to an existing highway would save plenty of tax payer's money. Money that can better spent by either put back into the project or spend on the highway system within the area (most of the highways in the area are in dire need of repairs especially highway # 307).

An alternate location (within the Whiteshell Provincial Park) to be considered would include Eleanor Lake by the Seven Sisters Conservation Office. This site would be very suitable with the close proximity to highway # 307, hydro power availability and water source. This location would be just as close to a hospital than your Sylvia Lake location proposal. We hope that you do not intend to have an emergency preparedness plan to transport any of the future injured camp guests to the hospital by boat? There are many other areas of the Whiteshell already developed that would be better suited to the camp.

I understand that the Pinawa LGD mayor and counsel support this idea and have led you to believe that the residents of Pinawa also support the Sylvia Lake location. On the contrary, the citizens of Pinawa that I have been speaking to are not supportive of the Sylvia Lake location, in fact there are a lot of unhappy people concerned about building this development on a untouched lake (protected by the Manitoba Government?), building a + 4.5 km road into this proposed site, environmental impacts associated with the road and site development, increased boat traffic in an already busy Lake. The new road brings the possibility of future development at this site and at any access point from the new road. Although the present intent for this site is the "Tim Horton Park", we all know that Governments change and future development is likely around this new road. What happens to the site, say 15 years down from now, and Tim Horton's pull their program (bought out by a larger company?) and the site sold and turned into Condo's plus cottages. Lets keep this pristine Lake the way it is for all of Manitobans and future Manitobans to enjoy.

With the contents of this letter to consider, we trust that you will take our concerns seriously and reconsider the Sylvia Lake location for the new "Tim Horton Park".

Sincerely,



John Trueman

Cc: Gerald Hawranik, MLA, 330 Legislative Building,
450 Broadway
Winnipeg, Manitoba
R3C 0V8

Blair Skinner, Mayor of Pinawa
Local government District of Pinawa
Box 100, 36 Burrows Rd..
Pinawa, Manitoba
R0E 1L0

MAR - 2 2010

Mr. Jeff Simpson

R0E 1L0

COPY

Dear Mr. Simpson:

Thank you for your letter regarding the Tim Horton Children's Foundation Youth Camp proposal at Sylvia Lake within the Whiteshell Provincial Park.

Two public information sessions were held to allow the public the opportunity to provide comments on the proposal. These sessions were held on February 16th, 2010 at the Pinewood Lodge in Whiteshell Provincial Park, and on February 17th, 2010 at the Canad Inn Polo Park in Winnipeg.

I appreciate the concerns that you have brought to my attention. They will be included along with the comments received at the public information sessions, as part of the review process before making a final decision.

Thank you for your interest in Manitoba provincial parks.

Yours sincerely,

ORIGINAL SIGNED BY
BILL BLAIKIE

Bill Blaikie
Minister

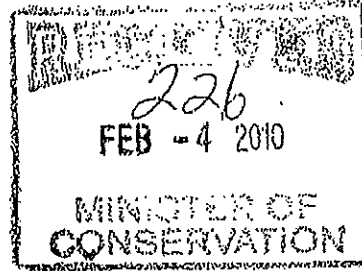
Bcc: Fred Meier
Bruce Bremner
Barry Bentham
John Irwin

1000.32

Jeff Simpson

ROE ILO

February 3, 2010



Right Honourable Bill Blaikie
 Minister of Conservation
 330 Legislative Blvd.
 450 Broadway Avenue
 Winnipeg, MB R3C 0V8

Sent via fax only; 204 945 3586

Re: Tim Hortons Camp Proposed Sylvia Lake Location

Dear Sir,

I am writing to confirm my disagreement with the proposed location of the Tim Hortons Camp on Sylvia Lake. Sylvia Lake is a Jewel in the Whiteshell Provincial Park with its undisturbed shoreline.

I am a strong supporter of giving children exposure to leadership training and outdoor activities. There are many alternative locations, which would have existing roads and safer waterway.

As a resident of Pinawa I would like to ensure that you know that many residents are not in favour of this development.

Personally, my concerns can be divided into personal, safety and environmental areas.

Personal Issues

On a personal level our house is one of the closest to the camp location. With 260 campers and 70 staff the noise level in my backyard will be significant. Similar to a zoning variance, I think the nearest neighbours should be asked for input?

With the new road I would assume the province intends to lease adjacent land for cottages? Furthermore when Tim Hortons decides they do not want the location will it be sold to a developer?

Safety Issues

The fast flowing water in the region does not lend itself to a camp with safe swimming.

MAR - 2 2010

COPY

Bill & Maureen Macdonald

Dear Bill & Maureen Macdonald:

Thank you for your letter regarding the Tim Horton Children's Foundation Youth Camp proposal at Sylvia Lake in the Whiteshell Provincial Park.

Please be advised that there were two public information sessions held to allow the public the opportunity to provide comments on the proposal. These sessions were held on February 16th, 2010 at the Pinewood Lodge in the Whiteshell Provincial Park and on February 17th, 2010 at the Canad Inn Polo Park in Winnipeg.

I appreciate your concerns regarding cottaging development along the proposed road. The department has no plans for cottage development in this area. If cottage development should be considered in the future, the department will propose this in a public forum prior to making a final decision.

Your comments have been noted and will be included with comments received at the public information sessions as part of the review process, before making a final decision.

Thank you for your interest in Manitoba provincial parks.

Yours sincerely,

ORIGINAL SIGNED BY
BILL BLAIKIE

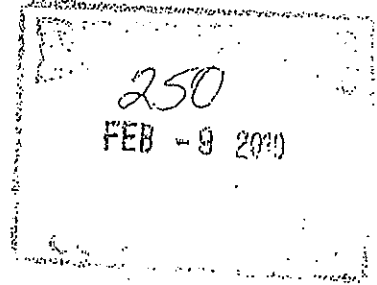
Bill Blaikie
Minister

Bcc: Fred Meier
Bruce Bremner
Barry Bentham
John Irwin

1000,32

Vandenbogerd, Kathy

From: Monday, February 08, 2010 7:46 PM
 Sent: Conservation, Minister
 To: ghawranik@leg.gov.mb.ca
 Cc: Tim Horton's Camp - Whiteshell Provincial Park
 Subject:



Hon. B. Blaikie,

Regarding the Tim Horton's camp on the Winnipeg River system.

We have great regard for the intentions of Tim Horton's and the Tim Horton Children's Foundation to provide a camp environment for children from economically disadvantaged homes.

What we would like addressed by the Minister of Conservation is the access to Sylvia Lake and the possibility of future cottage lots built on that side of Winnipeg River. We find the river already handles too much water traffic and have noticed a marked increase in noise and pollution.

What assurances will the Minister give that this isn't the 'thin edge of the wedge' to future development of cottage properties in the natural habitat on the east side of Winnipeg River.

Sincerely,

Bill and Maureen Macdonald

Pinawa, MB

c. G. Hawranik

APR - 1 2010

Michelle Long

COPY

Dear Michelle Long:

Thank you for your letter regarding the Tim Horton Children's Foundation youth camp proposed for Sylvia Lake in the Whiteshell Provincial Park.

Sylvia Lake is being considered for the camp proposal because of the location, the operational requirements and programming vision, as well as, limiting the impact on park natural and cultural resources, and minimizing conflicts with existing park users.

Your comments will be included with others received as part of the review process before making a final decision.

Thank you for your interest in Manitoba provincial parks.

Yours sincerely,

ORIGINAL SIGNED BY
BILL BLAIKIE

Bill Blaikie
Minister

Bcc: Fred Meier
Bruce Bremner
Barry Bentham
John Irwin

1000

Vandenbogerd, Kathy

From: Michelle Long
Sent: Tuesday, February 16, 2010 1:07 PM
To: Conservation, Minister
Subject: proposed camp on Sylvia Lake

Dear Minister Blaikie,

I was very dismayed to learn of the proposed development of a Tim Horton's camp on Sylvia Lake in the Whiteshell Provincial Park. Could you please tell me how this particular site came to be chosen, and specifically, what criteria were used?

Sincerely,
Michelle Long

300
FEB 17 2010

APR - 1 2010

Mr. T.H. (Terry) Neplyk, B. Sc., MBA

COPY

R2G 0V7

Dear Mr. Neplyk:

Thank you for your letter regarding the Tim Horton Children's Foundation youth camp and your executive summary outlining your proposal to have the camp located at the Grand Beach Entertainment Centre.

We will share your suggestion with the Tim Horton Children's Foundation for their consideration.

Thank you for your interest in this project.

Yours sincerely,

ORIGINAL SIGNED BY
BILL BLAIKIE

Bill Blaikie
Minister

cc. Fred Meier
Bruce Bremner
Barry Bentham
John Irwin

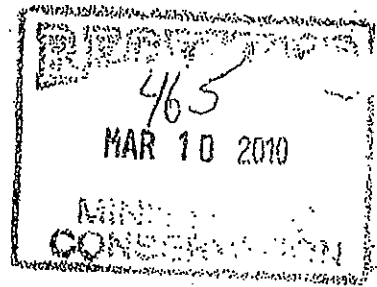
1000.32

T.H. (Terry) Neplyk B.Sc., MBA
Management Consultant

Business Plans
Feasibility Studies
Private Finance Capital & Joint Ventures
Business Acquisitions & Dispositions
Business Systems
Financial Analysis
Special Event Planning
Performing Arts
Muslo Management
Merchandising
Marketing
Web Sites
Forensic Accounting

March 6th, 2010

Honorable Bill Blaikie
Minister of Conservation
Government of Manitoba
330 Legislative Building - 450 Broadway
Winnipeg, Manitoba R3C 0V8
Phone: 945-3730 Fax: 945-3586



Re: Tim Horton's Youth Camp

I wrote you and your replied late last year about an excellent location for the Tim Horton's Youth Camp. Since Meditation Lake did not work, and it looks like Pinawa is striking out too why not look north instead of east. This site has already been used as a campground and has much of the infrastructure in place.

Congratulations once again on your election and your appointment as Minister of Conservation Mr. Blaikie. I was born raised and educated in North East Winnipeg. I realize from recent press information today that the Pinawa site hit a snag. Can your office consider another site suitable for a Youth Camp develop plan. How about the plan I sent you previously. I have not contacted Tim Horton's directly, I am sure you can forward this again to them please. I will repeat the narrative from what I sent you late last year.

There is a site just a few minutes north of Bird's Hill Park, near Balsam Hill called the Grand Beach Entertainment Centre.

I believe this can be the last piece of the puzzle, so to speak, to complete making the Tim Horton's Youth Camp a reality. My cousin actually spent a few years working in the southern Ontario Tim Horton's Youth Camp. Just think of site improvements that have already been made.

T.H. (Terry) Neplyk B.Sc., MBA
 Management Consultant

Business Plans
 Feasibility Studies
 Private Finance, Capital & Joint Ventures
 Business Acquisitions & Dispositions
 Business Systems
 Financial Analysis
 Special Event Planning
 Performing Arts
 Music Management
 Merchandising
 Marketing
 Web Sites
 Forensic Accounting

I am a little selfish; this site is under utilized, and being the former President of the Grand Beach Cottage Owners Association, and member of the Grand Beach Area Development Corporation, I want to see this site up, running, vibrant and busy all summer long.

What a perfect idea, the Youth Camp and what a perfect location.

Minister Struthers who is familiar with our cottage owners association and area development corporation has publicly asked for public input, well here it more than just input, here is the solution.

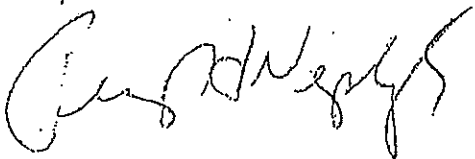
I have attached this Executive Summary prepared by the primary shareholder.

Should you be interested in more information, to speak with the primary shareholder and/or have your deputy minister view the site, please feel free to contact myself at the phone number or email address on this letterhead. You may wish to visit the web-site at www.gboc.ca and click on the video box to view the site electronically.

There is much more valuable information we can share with you and your ministry, including the appraisal and a number of reports and plans that were prepared for the current owners a number of years ago.

Just for further information, the asking price is significantly lower than a recent appraisal indicated its value was.

Regards



T.H. (Terry) Neplyk B.Sc., MBA
 Management Consultant

c.c. Lawrence Hadiken, Grand Beach Entertainment Centre

T.H. (Terry) Neplyk B.Sc., MBA
Management Consultant

Business Plans
Feasibility Studies
Private Finance Capital & Joint Ventures
Business Acquisitions & Dispositions
Business Systems
Financial Analysis
Special Event Planning
Performing Arts
Multi Management
Merchandising
Marketing
Web Sites
Forensic Accounting

EXECUTIVE SUMMARY

The Grand Beach Entertainment Centre (GBEC) is a multi-use recreational facility comprised of two distinct, but supporting operations.

1. The Grand Beach Campground and RV Park
2. The Grand Beach Amphitheatre

The Campground and RV park can operate from the May long weekend to the September long weekend, with final closure in early October. Concurrently, the Amphitheatre can host a variety of professionally promoted festivals, Pow-Wows, concert and summer music festival events.

The Campground has been designed specifically to provide the additional demand surge for accommodations created by the events held in the amphitheatre.

The GBEC facility occupies approximately 600 acres of land with an option for additional 700 or more acres of land. Upon completion the campground will have 1,000 permanent fully serviced lots and over 11,000 festival style lots (tent accommodations) created for support of

T.H. (Terry) Neplyk B.Sc., MBA
Management Consultant

Business Plans
Feasibility Studies
Private Finance Capital & Joint Ventures
Business Acquisitions & Dispositions
Business Systems
Financial Analysis
Special Event Planning
Performing Arts
Music Management
Merchandising
Marketing
Web Sites
Forensic Accounting

the Amphitheatre. The Amphitheatre will be the only naturally treed amphitheatre in central Canada; and the site is able to accommodate parking for over 10,000 vehicles.

The location of GBEC is within a 10-minute drive of Grand Beach Provincial Park, and the South Beach Casino and Hotel. Grand Beach Provincial Park is the largest summer attraction for the population of Manitoba since it opened in 1887.

Grand beach itself, located within the Provincial Park is a 43 km long strip of powder sand, along the east coast of Lake Winnipeg, which was rated one of the ten top beaches in the world, by a leading men's magazine (Playboy Magazine). The region its self, is the centre of cottage country for the province.

There are 5 major beaches running along a 25-kilometer (15 Mile) length of the eastern shore of Lake Winnipeg.

GBEC is located 70 kilometers (50 Miles) north east of the city of Winnipeg. Since GBEC is built on sand and sandy soil, there is excellent drainage such that water runoff is almost instantaneous, so that the site is inhabitable regardless of the weather.

Already GBEC has met the demand for campground space in the most popular summer tourist attraction area in the province. The sole campground in the immediate are, the Grand Beach Provincial Park, has over 300 campsites that historically are fully booked most weekends each season. Therefore, unless an individual has the financial means to purchase a cottage

T.H. (Terry) Neplyk B.Sc., MBA
Management Consultant

Business Plans
Feasibility Studies
Private Finance, Capital & Joint Ventures
Business Acquisitions & Disposals
Business Systems
Financial Analysis
Special Event Planning
Performing Arts
Music Management
Merchandising
Marketing
Web Sites
Forensic Accounting

(average price \$100,000 CDN) or fails to book early enough for space in the Provincial Park, the ability to spend a weekend up in the Grand Beach region is not possible. The proposed 650 RV sites, 1,500 seasonal spaces and up to 10,000 festival spaces will provide families the opportunities to spend a week or two or a full season, or enjoy the simple pleasure of a weekend camping trip. The natural beauty of the Grand Beach region, coupled with first-class facilities, makes GBEC an attractive and affordable destination.

What makes GBEC facility so unique is that in addition to the strong economic base built on the campground facility, a second revenue producing operation, the Amphitheatre, creates a destination in and of itself. The Amphitheatre is designed to hold up to 60,000 people, although it is believed it will be a number of years before a major event of that scale is held.

Existing Infrastructure

- a. Ten buildings for food and beverage services, including VIP Lounge, Corporate Boxes and a restaurant. These buildings will be leased out to private individuals willing to run their stands on a profit sharing basis.
- b. Five buildings for washrooms, showers and change rooms
- c. Five concession Booths
- d. Marshalling area to facilitate traffic in and out of the site

Environmental Issues

This area of the Whiteshell Park is a wonderfully well preserved ecosystem. The addition of a road and power line will involve the clearing of land. This is existing habitat for 4 Bald Eagles, Falcons and Golden Eagle. The locations are chosen for their secluded nature.

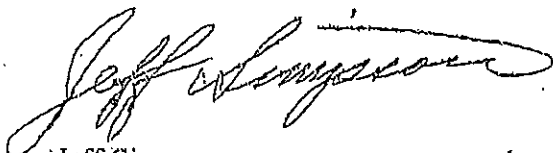
The development of a campground with a new road and power line will have dramatic effects on the ecosystem. The immediate impacts will include increased erosion and runoff. As this is a tributary to Lake Winnipeg it will only exacerbate the issues with turbidity upstream in Lake Winnipeg.

My understanding is that the waste will be trucked away. Undoubtedly much will land in the river adding to the ongoing eutrophication of the river.

As the Minister of Conservation I think your lasting legacy should include protecting the environment. No one is against the children's programs it is simply the wrong location.

Kindly advise therein.

Sincerely,



Jeff Simpson

T.H. (Terry) Neplyk B.Sc., MBA
Management Consultant

Business Plans
Feasibility Studies
Private Finance Capital & Joint Ventures
Business Acquisitions & Depositions
Business Systems
Financial Analysis
Special Event Planning
Performing Arts
Music Management
Merchandising
Marketing
Web Sites
Forensic Accounting

- e. Parking for over 10,000 vehicles per event
- f. The Amphitheatre area is fenced off to facilitate security
- g. Approximately 50% of the Amphitheatre site has been left in its naturally treed state, making it the only treed amphitheatre in North America

Market Overview

GBEC has deliberately structured itself to appeal to two complementary markets, the camping sector – ranging from the back to nature tent types, to the growing RV demographic (especially as the baby boomers and active retired people wish to see the country or visit other countries – while taking their bedroom with them; and the Summer Festival Goers, interestingly, this second group consists of many of the RV/camping types – hence the complementary, reinforcing nature of GBEC.

Overshadowing both groups are the real-time considerations of safety and security that are directly impacting the tourism industry – in Canada, the United and Europe. The continued Al Qaeda terrorist threat continues to shape the airline and tourist industry. Post 9/11 coupled with the recent Bali resort bombings, has impacted destination tourism, especially when that destination can only be reached by air. Those who do decide to travel to resort destinations are expected to make their destination of choice a country that is considered relatively safe,

T.H. (Terry) Neplyk B.Sc., MBA
Management Consultant

Business Plans
Feasibility Studies
Private Finance, Capital & Joint Ventures
Business Acquisitions & Depositories
Business Systems
Financial Analysis
Special Event Planning
Performing Arts
Music Management
Merchandising
Marketing
Web Sites
Forensic Accounting

and preferably a destination that can be reached without use of air travel. While foregoing is unfortunate, the reality is that these events work in the favour of GBEC.

It is anticipated that Canada's Attraction as a destination vacation country will grow, especially within the US Market. With a common language, similarities in culture, and the relative safety and stability inherent in Canadian Society, Canada is a safe destination for US vacationers. A camping trip in or to Canada is perhaps one of the safest tourism trips that a Canadian or US family can take. The key is access by road, with the only challenge being the border crossing line-ups. The negatives for other destination resorts are in fact, the exact factors that are positive for GBEC.

The RV crowd and the more rustic traditional campers all expect hot showers, clean rest rooms, laundry facilities, convenience stores, and playgrounds. Situating these amenities in a naturally forested setting, within 15-minute drive of five of the finest beaches in the province and 10-minute drive from the South Beach Casino, means that GBEC is a natural camping destination. Presently, due to the diminishing number of campsites in the Grand Beach region, most of the citizens of Winnipeg are forced to rely on day trips.

For the local market, GBEC provides a destination for the Winnipeg bound family to spend five days on a camping vacation only one hour from home. GBEC provides instant relief from the

T.H. (Terry) Neplyk B.Sc., MBA
Management Consultant

- Business Plans
- Feasibility Studies
- Private Finance Capital & Joint Ventures
- Business Acquisitions & Disposals
- Business Systems
- Financial Analysis
- Special Event Planning
- Performing Arts
- Music Management
- Merchandising
- Marketing
- Web Sites
- Forensic Accounting

"are we there yet?" whine in the back-seat of the car, for those less hardy campers who just

want to take their children to the country for a couple of days, once a year.

APR 14 2010

James Spiers

COPY

Dear Mr. Spiers:

Thank you for your letter regarding the Tim Horton Children's Foundation youth camp proposal at Sylvia Lake in Whiteshell Provincial Park.

Two public information sessions were held to allow the public the opportunity to discuss the project and provide comments on the proposal. These sessions were held on February 16th, 2010 at the Pinewood Lodge in Whiteshell Provincial Park and on February 17th, 2010 at the Canad Inn Polo Park in Winnipeg. I hope you were able to attend.

Sharing your knowledge of the area is appreciated and your comments will be included with others received, through the review process, before making a final decision.

I will forward your concerns regarding the safety aspects of this location to Dave Newnham, Vice President And Executive Director of Tim Horton Children's Foundation.

Thank you for your interest in Manitoba provincial parks.

Yours sincerely,

ORIGINAL SIGNED BY
BILL BLAIKIE

Bill Blaikie
Minister

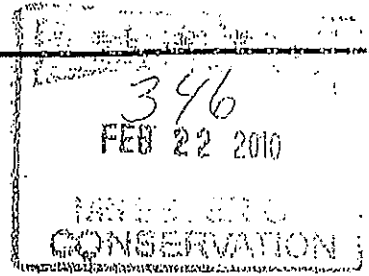
cc: Mr. Dave Newnham

Bcc: Fred Meier
Bruce Bremner
Barry Bentham
John Irwin

1000

Vandenbogerd, Kathy

From: James spiers
 Sent: Sunday, February 21, 2010 12:11 PM
 To: Conservation, Minister
 Subject: tim camp



Dear Sir

Thankyou for the opportunity to express opinion on the Tim Hortons camp. My wife and I recently moved to the area and are concerned at the lack of information for and against the camp this creates friction when there shouldn't be. Our council has spoken in favor but our mayor admits that he has only seen the same information as the rest of us. As the camp strives to be self contained and approx 80 of the jobs are part time therefore could be students the financial gain for the area could be minimal, also a large % of the food is donated or brought in bulk.

The area chosen is a very beautiful prominent spot no doubt good advertising for tim hortons , but due to the converging flow of the river there is a very strong current and under tow that is not so apparent and is avoided by small boats and canoes. Defiantly not suitable for swimming. As we have a large camp ground there is a concern that teenagers will sneak backwards and forwards this could be fatal. Some residents are also concerned about noise.

Also we need to know what plans would be in place if the camp was ever closed as there would be pressure to further develop the area and a busy river would become a circus. I believe Pinawa needs to grow to survive all though the proposed campsite is on the other side of the river we need an updated management plan. There is considerable concern that the camp would be more safely situated around the side of Sylvia lake unless existing sights could be used. I look forward to your reply.

Yours sincerely

Jim Spiers.

APR - 1 2010

Bonnie Minnick

COPY

Dear Ms. Minnick:

Thank you for your letter regarding the Tim Horton Children's Foundation youth camp proposal at Sylvia Lake in Whiteshell Provincial Park.

Public information sessions were held to allow the public the opportunity to provide comments on the proposal. These sessions were held on February 16th, 2010 at the Pinewood Lodge in Whiteshell Provincial Park and on February 17th, 2010 at the Canad Inn Polo Park in Winnipeg.

I appreciate the concerns that you have brought to my attention. They will be included along with the comments received at the public information sessions, as part of the review process before making a final decision.

Thank you for your interest in Manitoba provincial parks.

Yours sincerely,

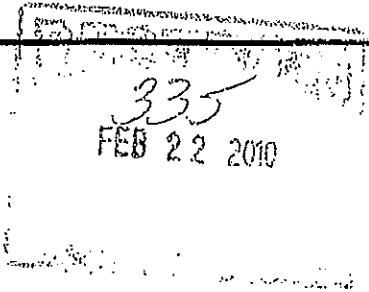
ORIGINAL SIGNED BY
BILL BLAIKIE
Bill Blaikie
Minister

Cc: Dave Newnham

Bcc: Fred Meier
Bruce Bremner
Barry Bentham
John Irwin

Vandenbogerd, Kathy

From: Bonnie Minnick
Sent: Sunday, February 21, 2010 7:16 PM
To: Conservation, Minister
Cc: newnham_dave@timhortons.com
Subject: Children's youth camp Sylvia lake



To Bill Blaikie and Dave Newnham,

As the key players to forward the proposed Tim Horton's Youth Camp at Sylvia Lake, it is my responsibility to communicate with you.

As a Mother with three children, spending all summer for twenty years at Jessica Lake in the Whiteshell park in Manitoba, I earned the Bronze Cross in lifesaving. Even though the land locked lake had no currents or ebb tides and Jessica Lake is relatively shallow, there was no doubt in my mind that children, *even with a parent supervising*, was still in danger near water.

Now retired and residing on the waterfront of Pinawa, I am one of the few swimmers who will jump off our dock into the Winnipeg River System. There is a good and logical reason why there are so few who are strong enough to cope with the sometimes raging currents and ebb tides.

The Tim Horton's Children's Foundation could not have completed adequate research regarding water safety when they chose the proposed site for a new camp at the Sylvia Lake location.

It is true that Sylvia lake often is host to many pontoon and pleasure craft boats who stop to swim in the quiet waters. There is a logical reason why very few swimmers brave the dangers of the Winnipeg River System that surrounds most of the property line of the proposed camp.

Even though Pinawa, within a half kilometer from the proposed camp boasts of canoeing as a pastime, you do not see canoes and very few kayaks, along the river system; again due to the real hazard of the turbulent waters.

For this one reason alone, the proposed camp on Sylvia lake needs further analysis for the safety and sake of the children, who will have no savvy or knowledge of the Winnipeg River System.

Respectfully,
Bonnie Minnick



[FREE Animations for your email - by IncrediMail!](#)

[Click Here!](#)

APR - 7 2010

1000-25-
482

109

COPY

Mr. Kevin Edwards

Dear Mr. Edwards:

Thank you for your email regarding the Tim Horton Children's Foundation youth camp proposal at Meditation Lake in Whiteshell Provincial Park.

Public concerns and issues pertaining to water quality caused the site at ~~Meditation Lake~~ to not be considered for the Youth Camp development. *the remote nature of Med-hike lake area and* Meditation Lake will remain as a remote hike-in lake for backcountry recreational uses. Further review by Manitoba Conservation has identified Sylvia Lake as an alternate site for the proposed camp.

Two public information sessions were held to allow the public the opportunity to provide comments on the proposal. These sessions were held on February 16th, 2010 at the Pinewood Lodge in Whiteshell Provincial Park and on February 17th, 2010 at the Canad Inn Polo Park in Winnipeg. Information on the current proposal is available at www.manitobaparks.com.

Thank you for your interest in Manitoba provincial parks.

Yours sincerely,



Bill Blaikie
Minister

Bcc: Fred Meier
Bruce Bremner
Barry Bentham
John Irwin

E-MAILS

1000.32

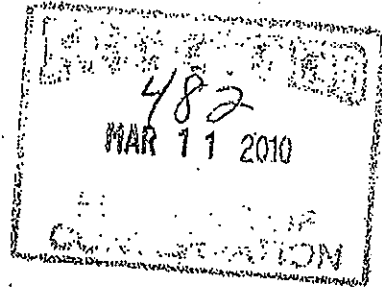
Vandenbogerd, Kathy

From: kevin edwards
Sent: Thursday, March 11, 2010 8:04 AM
To: Conservation, Minister
Subject: Stop the Meditation Lake development

Meditation Lake is a cherished destination for Whiteshell Provincial park users. It is one of only a handful of walk-in lakes, and located in one of the few roadless regions in an overly developed park. In addition, the health of the lake is in question. I do not support development at Meditation Lake. The lake should remain as a remote access-lake. Intensive research observations should be conducted at this lake to learn more of the troubling algae blooms occurring in Manitoba. In addition, THERE SHOULD BE NO SECRET PARK DEVELOPMENTS AHEAD OF PUBLIC CONSULTATIONS! Please register my opinion and let me know where you stand on this issue.

kevin edwards

roe 110



APR - 7 2010

Jesse Tottle

COPY

Dear Jesse Tottle:

Thank you for your letter regarding the Tim Horton Children's Foundation youth camp proposal at Sylvia Lake in Whiteshell Provincial Park.

Two public information sessions were held to allow the public the opportunity to provide comments on the proposal. These sessions were held on February 16th, 2010 at the Pinewood Lodge in Whiteshell Provincial Park and on February 17th, 2010 at the Canad Inn Polo Park in Winnipeg.

I appreciate the concerns that you have brought to my attention and hope you were able to attend the information session to discuss your views with staff. Your comments will be included along with the comments received at the public information sessions, as part of the review process before making a final decision.

Thank you for your interest in Manitoba provincial parks.

Yours sincerely,

ORIGINAL SIGNED BY
BILL BLAIKIE

Bill Blaikie
Minister

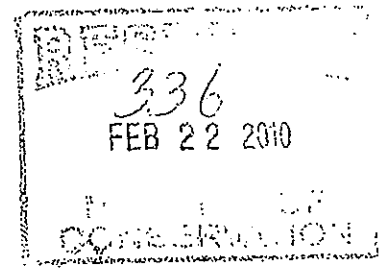
Cc: Rob Altemeyer, MLA

Bcc: Fred Meier
Bruce Bremner
Barry Bentham
John Irwin

1081

Vandenbogerd, Kathy

From: Irvine, Jessica
 Sent: Friday, February 19, 2010 12:47 PM
 To: 'robaltmeyer@mts.net'
 Cc: Vandenbogerd, Kathy
 Subject: Re: Jesse Tottle - Tim Hortons Camp



Hi Boyd,

I will forward to Kathy so she can log it as correspondence.

Thanks,
 Jess

Jess Irvine
 SA ic The Honourable Bill Blaikie
 Minister of Conservation
 945-1670

From: Rob Altemeyer <robaltmeyer@mts.net>
 To: Irvine, Jessica
 Cc: 'Rob Altemeyer' <robaltmeyer@mts.net>
 Sent: Fri Feb 19 12:36:36 2010
 Subject: Jesse Tottle - Tim Hortons Camp

Hi Jess

Can we get the department to send a written response to Jesse Tottle's concern about the development of the Tim Hortons camp in the Whitesell?

Thanks
 Boyd

From: Jesse Tottle
 Sent: Wednesday, February 17, 2010 1:20 PM
 To: robaltmeyer@mts.net
 Subject: Tim Hortons

Hi Rob,

My name is Jesse Tottle. I live at [redacted] and am hence one of your constituents. I am writing to you to voice my opposition to the new proposed Tim Hortons camp to be established in a pristine lake in an undeveloped part of the Whiteshell Provincial Park. I think that this land should simply be conserved so that it can be protected for wildlife. The Corporate camp should be set up in an area that is already developed. In other words, for the same reason that Meditation Lake was not worthy of this camp, the new area should be nixed. I would really appreciate your representation on this as we only have government to rely on when it comes to conservation. Corporations can only see their self-interests as you know and not the collective public interest.

Thanks,
 Jesse Tottle
 Winnipeg

APR 14 2010

COPY

D. & M. Owen

ROE ILO

Dear Mr. & Mrs. Owen:

Thank you for your letter regarding the Tim Horton Children's Foundation youth camp proposal at Sylvia Lake in Whiteshell Provincial Park.

Two public information sessions were held to allow the public the opportunity to provide comments on the proposal. These sessions were held on February 16th, 2010 at the Pinewood Lodge in Whiteshell Provincial Park and on February 17th, 2010 at the Canad Inn Polo Park in Winnipeg.

I appreciate your concerns and insight relating to the fast water in the area and your views on planning. Your comments will be included along with the comments received at the public information sessions, as part of the review process before making a final decision.

Thank you for your interest in Manitoba provincial parks.

Yours sincerely,

ORIGINAL SIGNED BY
BILL BLAIKIE

Bill Blaikie
Minister

Bcc: Fred Meier
Bruce Bremner
Barry Bentham
John Irwin

03/15/2010 04:11 12047538842

MARTHA OWEN

01

517
MAR 16 2010

Attention Bill Blackie

Proposed Tim Horton Campground at Sylvia Lake

It seems everyone wants a piece of waterfront property! In the last few years here in Pinawa we have had two new campgrounds established, one along the Winnipeg River west of town, the other on the Pinawa Channel just north of town. Both times waterfront access was lost to the inhabitants of the town. Both of these areas are now gated private property, barring public access. On another occasion, a resident asked the town council to sell him, for one dollar, a couple of acres of riverfront on the east side of the town, so that he could build a bed and breakfast establishment there. This was supposed to be 'good for the town'. The town council at the time was stupid enough to go along with this idea, and would have done so, had a group of citizens not taken the issue before the Manitoba Municipal Board. Permission for the project was denied. The reason given was that this was an ad hoc development, and the Municipal Board was not going to support it unless a new town plan was put in place.

But you can see what I am going to say next! It seems another plan is afoot to grab some important waterfront property in the immediate vicinity of the town, but this time, just within the boundaries of the Whiteshell Provincial Park. Again this will become private property, and most of us will be denied access. Many will say this land is not being used, and therefore is unimportant or even worthless, so develop it. (I might add that, since the town's beginning, the cliffs of this area have been used by the local youth as a swimming and diving spot, whenever conditions are favorable.)

I make the argument that the Whiteshell Park has been developed enough. This was recognized as early as 1981 in a draft version of the Whiteshell Master Plan of 1983, the most recent version of the plan. The 1983 plan specifically prohibits further building of all weather roads anywhere in the Winnipeg River Zone of the park, except for forestry and mining. The required all weather road for the Tim Horton Camp at Sylvia Lake is a non conforming use of the land in question. The choices are clear. Deny permission, or put a new Whiteshell Master Plan in place, and have the plan pass public review.

A word about local water conditions. The flow of the Winnipeg River at Pinawa varies widely from an all time low of less than a 100 cubic meters per second, to an astounding 2800 cubic meters per second. At the higher rate, the water goes up a few feet, depending on location. The higher level is not a concern, but the dramatic increase in speed is. The uneven lake bottom makes for turbulent upwellings and powerful down draughts, and this is a very deep lake. Whirl pools the size of a house can suddenly appear, seemingly out of nowhere. Under these conditions a life jacket is no guarantee of safety.

These are not unusual or rare conditions. Last summer the flows were just below the 2800 cubic meters per second rate from early spring to September. One could not paddle a canoe into Sylvia Lake from the Pinawa side. This lake is no place for novice canoeists. The Tim Horton people either do not understand this, or they are dismissive. One of their posters shows several sail boats in front of the proposed camp. The fast water is conveniently photoshopped out. These boats would be flushed down the river even at the average flow of 800 cubic meters per second. Another poster shows a dock sticking out from the cliffs at one of the fastest spots. This dock would be unusable and a dangerous obstruction.

If this project is approved, and the province builds a road at public expense, then the citizens of Pinawa and Manitoba will be paying, through our taxes, to have another piece of the public domain taken away from us and turned over to the private sector. There are places outside the park that would serve Tim Hortons' purpose just as well.

D & M Owen

D Owen
Martha Owen

ROE 1LO