

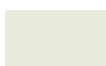
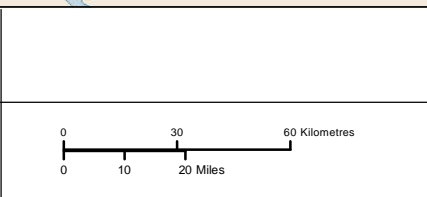


Legend

-  Generating Station (G.S.)
-  Roads
-  Study Area



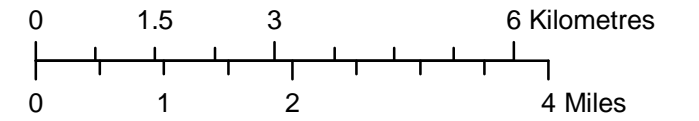
DATA SOURCE: Manitoba Hydro, Department of Natural Resources (2004)		
DATE CREATED: 24 MAY 2011	CREATED BY: HPP - GIS & Special Studies	
REVISION NO: VERSION: 1.0	REVISION DATE: 31 MAY 2011	QA/QC: MWZ

**Pointe du Bois
Spillway Replacement Project**

Study Area

**Figure:
7.1**

Coordinate System: UTM Zone 14N



DATA SOURCE:
Manitoba Hydro

DATE CREATED:
24 DEC 2010

CREATED BY:
Water Resources Engineering

REVISION NO:
VERSION 1.0

REVISION DATE:
06 JUN 2011

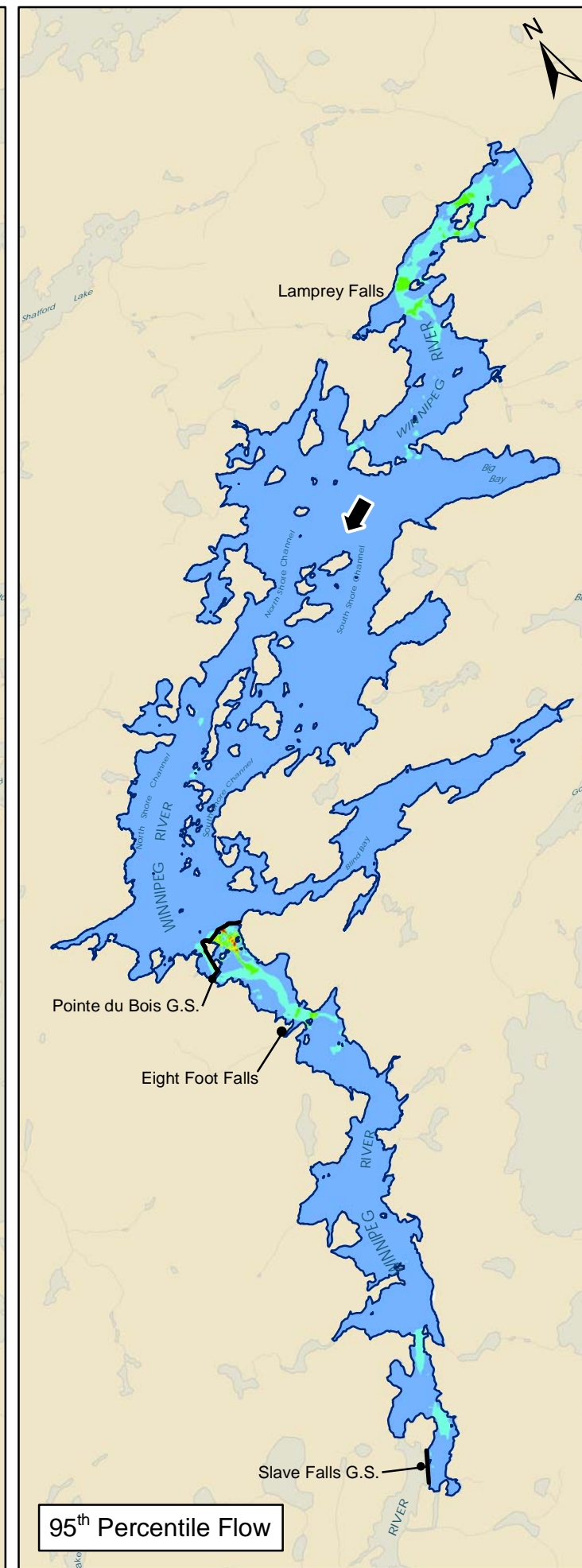
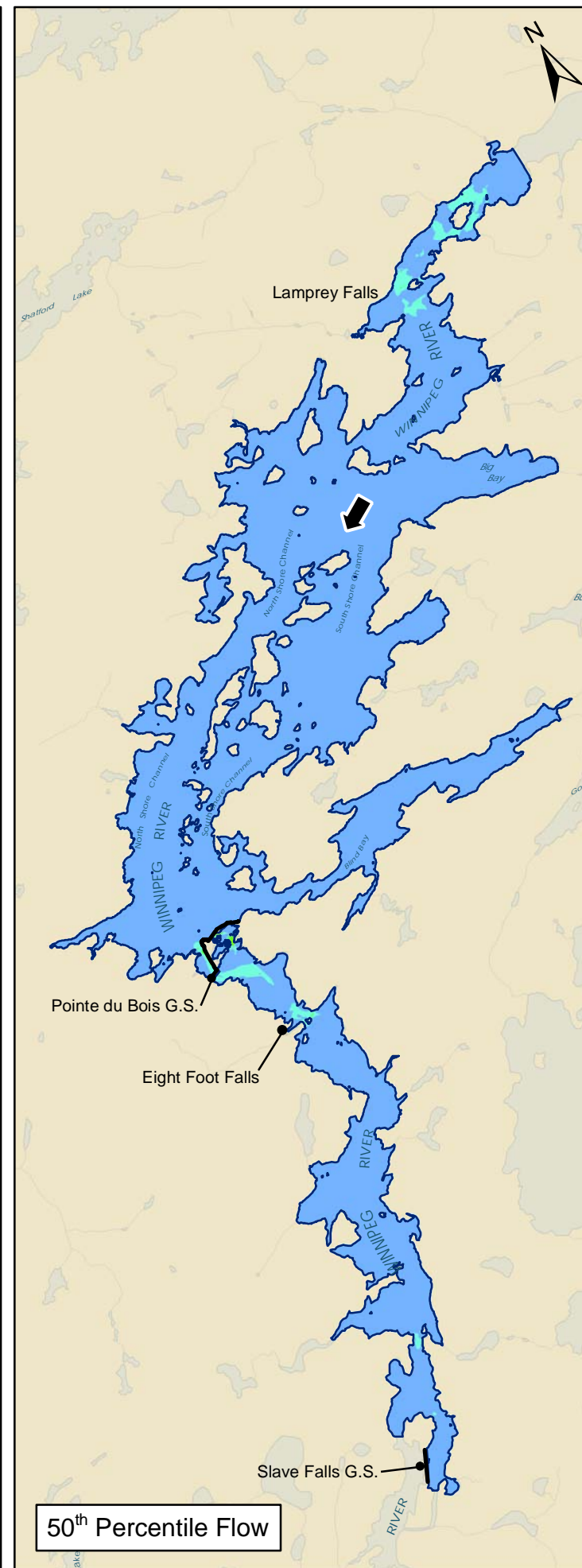
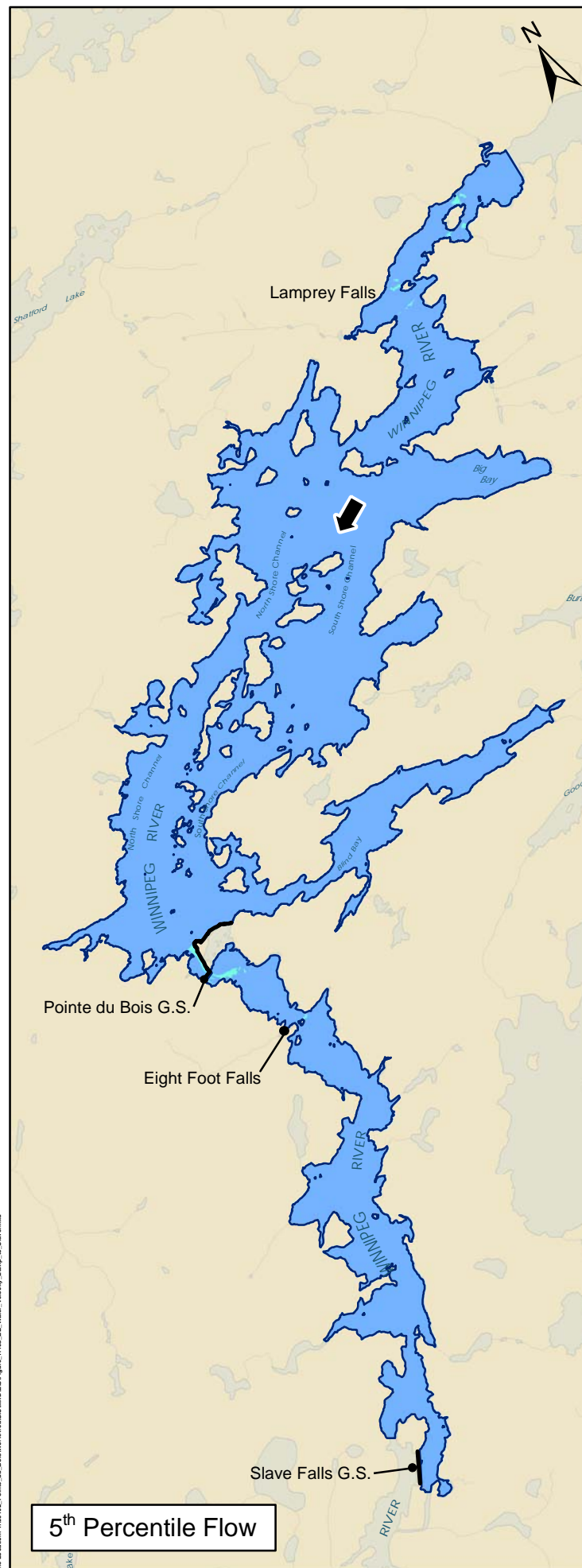
QA/QC:
KMS / MWZ

Legend

Velocity [m/s]

- 0 - 0.5
- 0.5 - 1.5
- 1.5 - 3
- 3 - 5
- Greater than 5

- Direction of Flow
- Generating Station (G.S.)



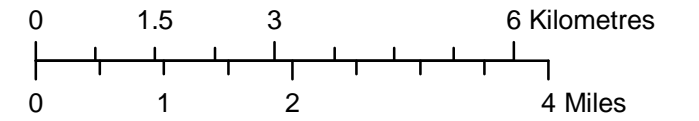
Pointe du Bois Spillway Replacement Project

**Existing Environment Water Velocity
Lamprey Falls to Slave Falls G.S.**

Figure:
7.10A

File Location: T:\06102_Points du Bois\Water\Map\GIS\Map\Figure 7.10A_EE_Water_Velocity_Lamp to Slave.mxd

Coordinate System: UTM Zone 14N



DATA SOURCE:
Manitoba Hydro

DATE CREATED:
29 DEC 2010

CREATED BY:
Water Resources Engineering

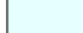




REVISION NO:
VERSION 1.0

REVISION DATE:
06 JUN 2011

QA/QC:
KMS / MWZ

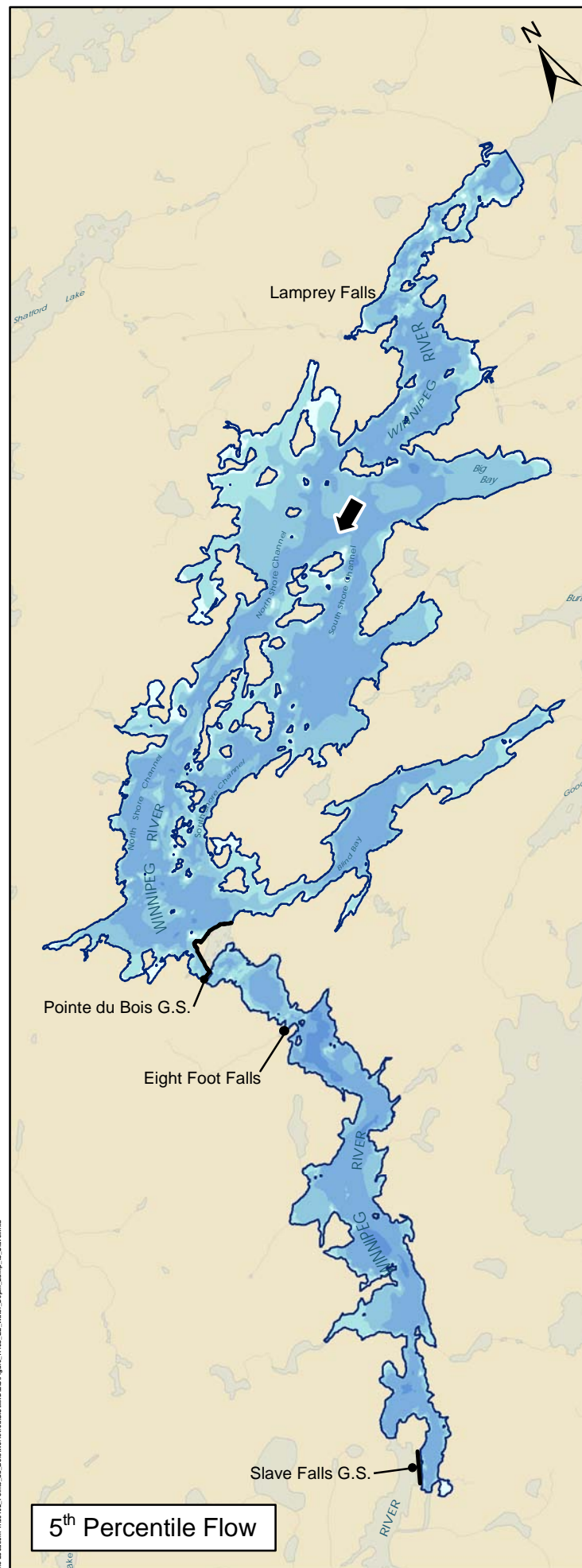
Legend

Depth [m]

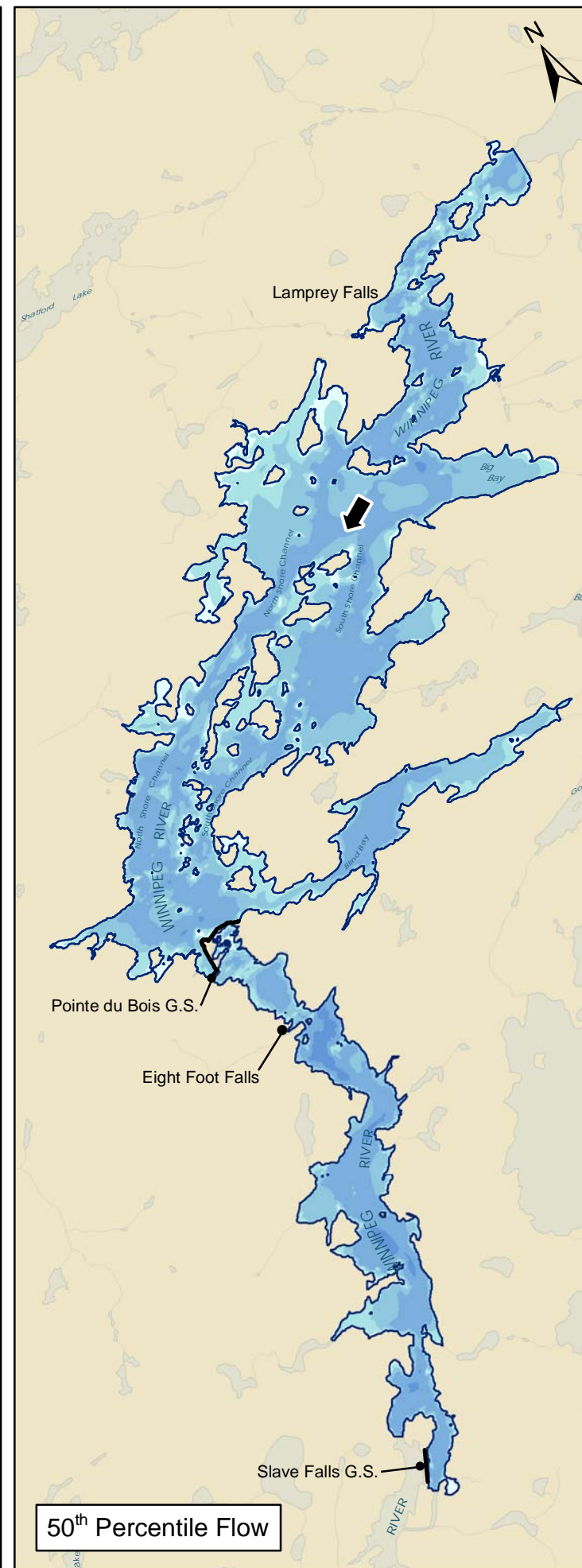
-  0 - 2
-  2 - 5
-  5 - 10
-  10 - 30
-  Greater than 30

 Direction of Flow

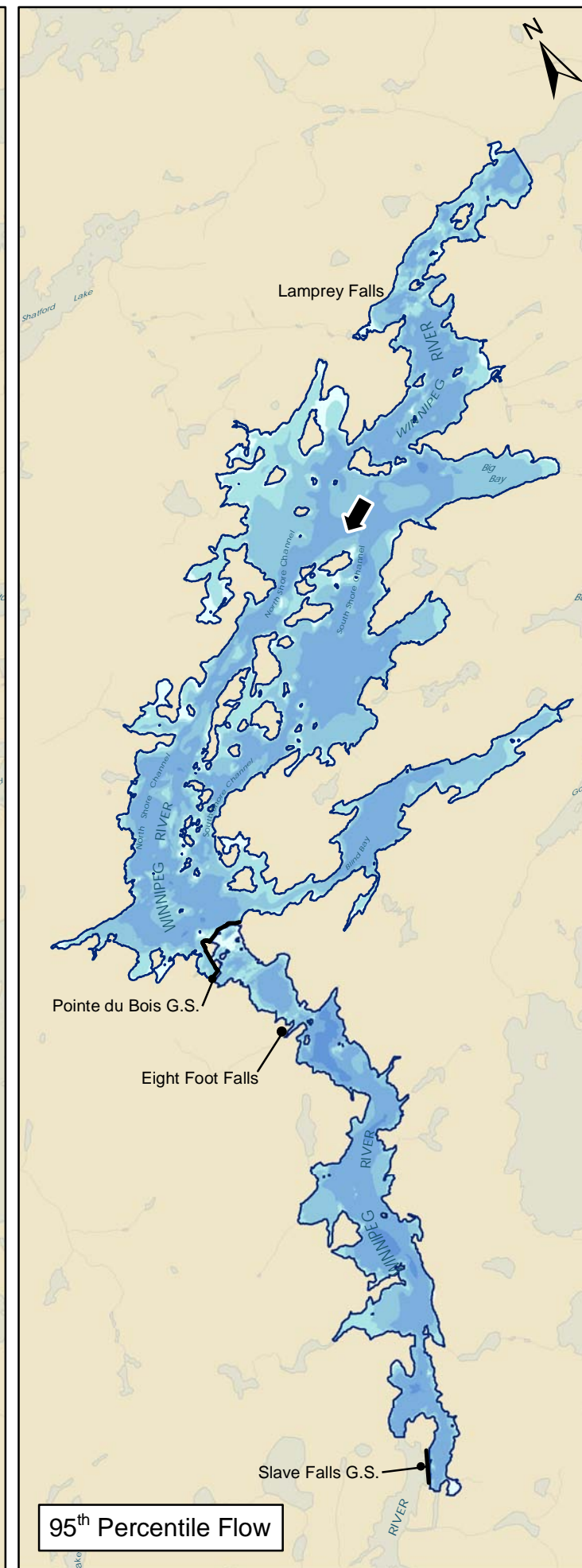
 Generating Station (G.S.)



5th Percentile Flow



50th Percentile Flow



95th Percentile Flow

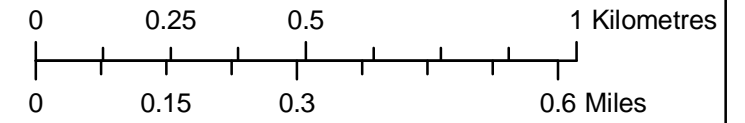
Pointe du Bois Spillway Replacement Project

Existing Environment Water Depth
Lamprey Falls to Slave Falls G.S.

Figure:
7.10B

File Location: T:\06102_Points du Bois\Water\Map\GIS\Map\Figure_7.10B_01_Water_Depth_Lamp du Slave.mxd

Coordinate System: UTM Zone 14N



DATA SOURCE:
Manitoba Hydro

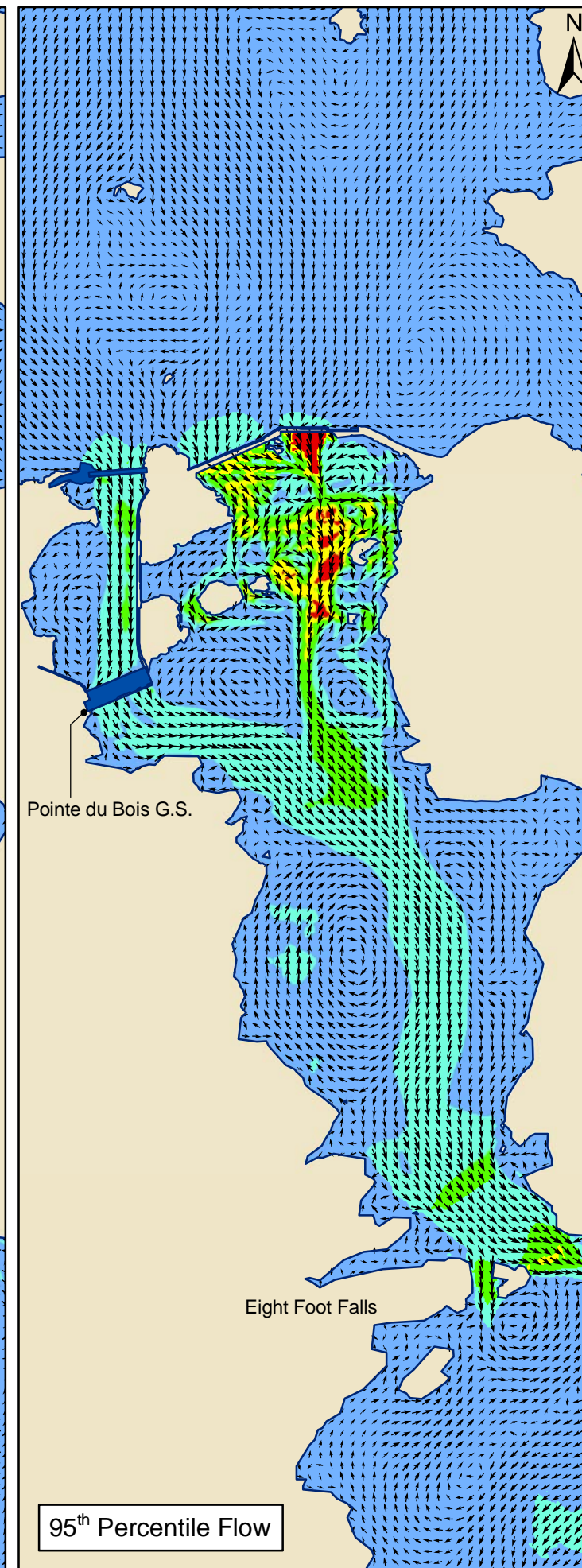
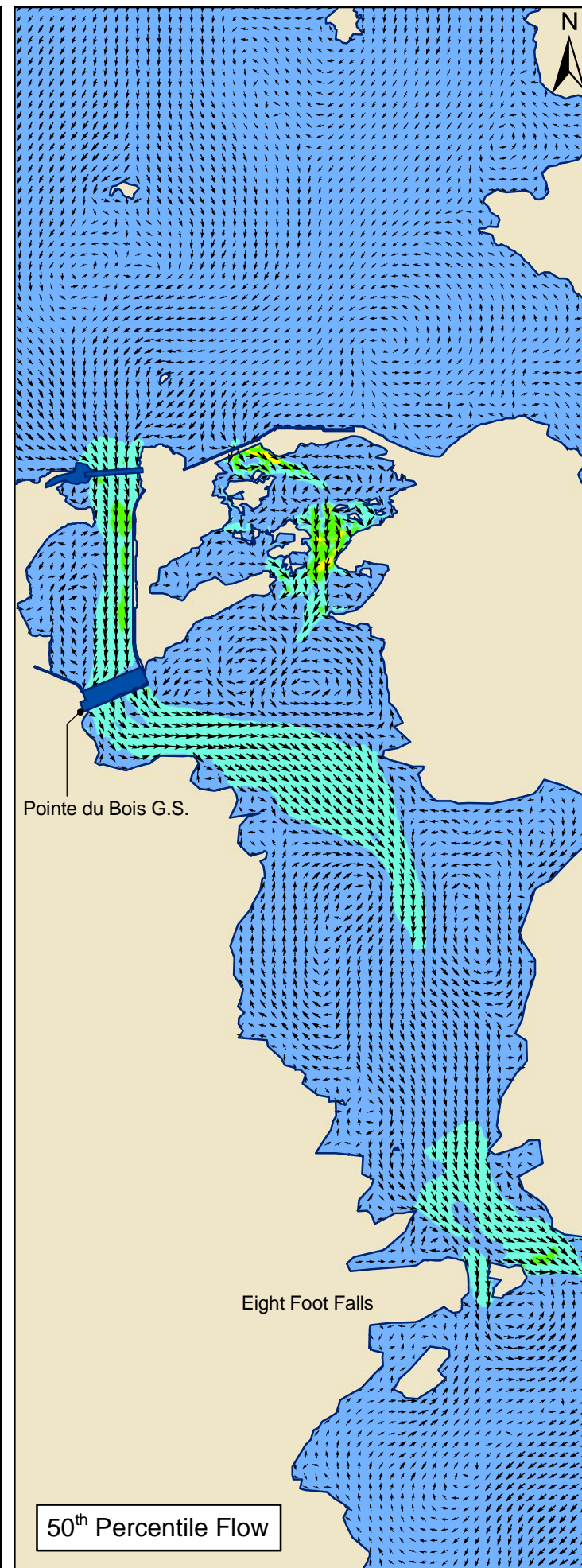
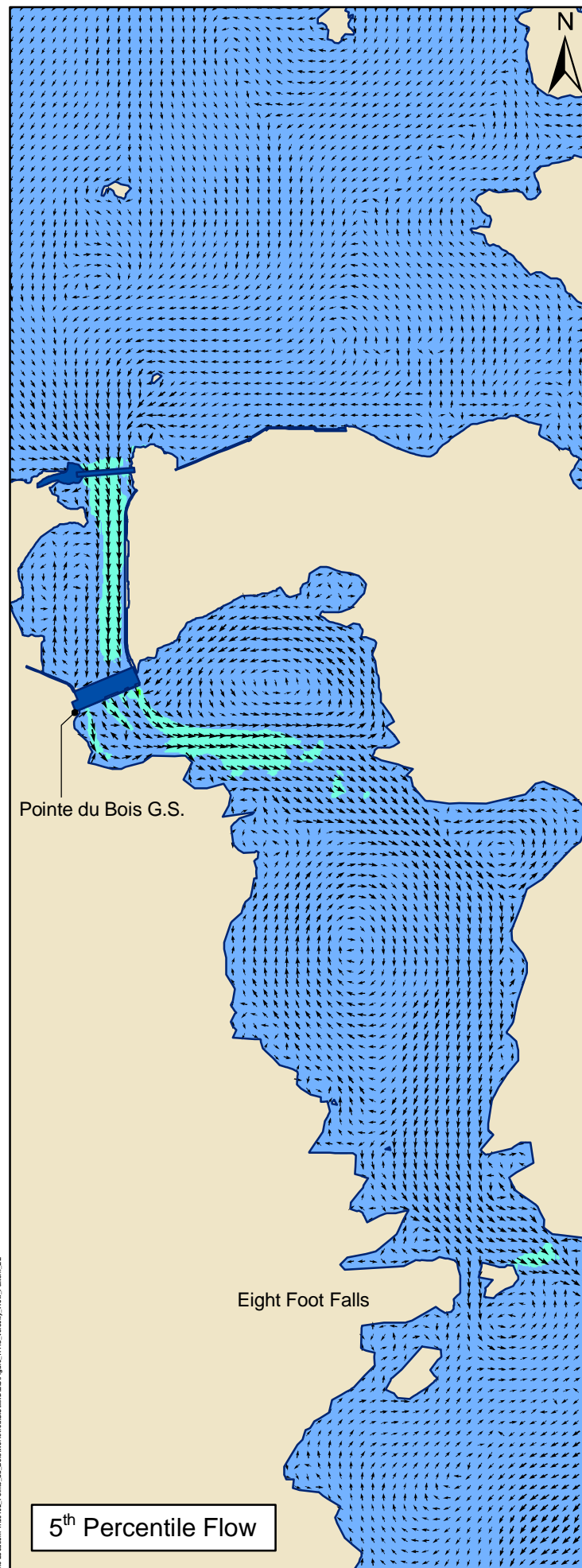
DATE CREATED: 24 DEC 2010	CREATED BY: Water Resources Engineering
REVISION NO: VERSION 1.0	QA/QC: KMS / MWZ

Legend

Velocity [m/s]

- 0 - 0.5
- 0.5 - 1.5
- 1.5 - 3
- 3 - 5
- Greater than 5

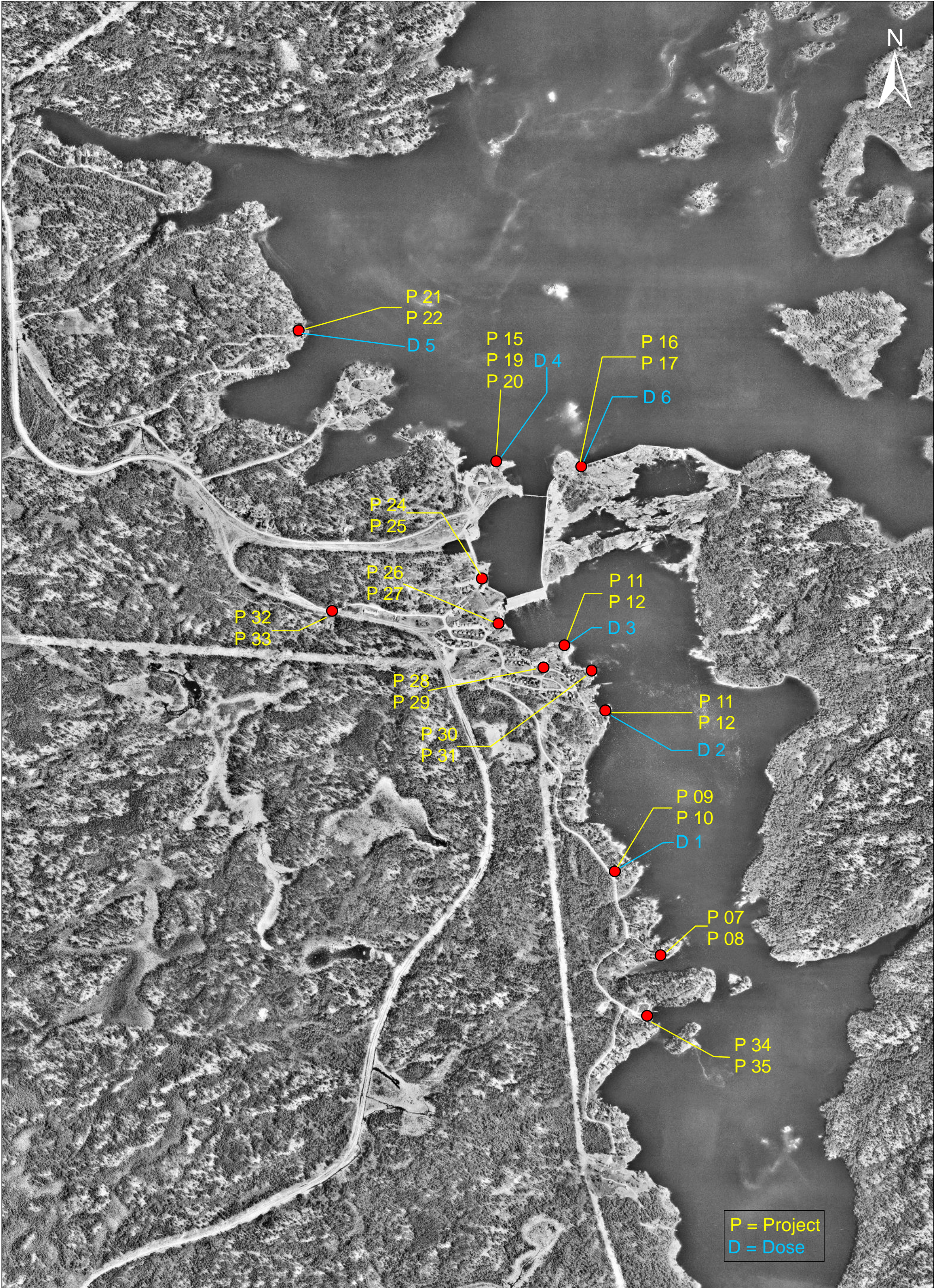
Velocity Vectors NTS
Generating Station (G.S.)



Pointe du Bois Spillway Replacement Project

Existing Environment
Water Velocity and Flow Patterns

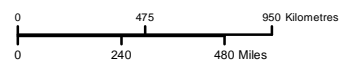
Figure:
7.11A



		DATA SOURCE: Manitoba Hydro, Industrial Technology Centre (ITC)		Pointe du Bois Spillway Replacement Project		Figure: 7.2
		DATE CREATED: 27 MAY 2011	CREATED BY: HPP - GIS & Special Studies			
		REVISION NO: VERSION: 1.0	REVISION DATE: 27 MAY 2011	QA/QC: MWZ		



Coordinate System: UTM NAD 1983 Z15



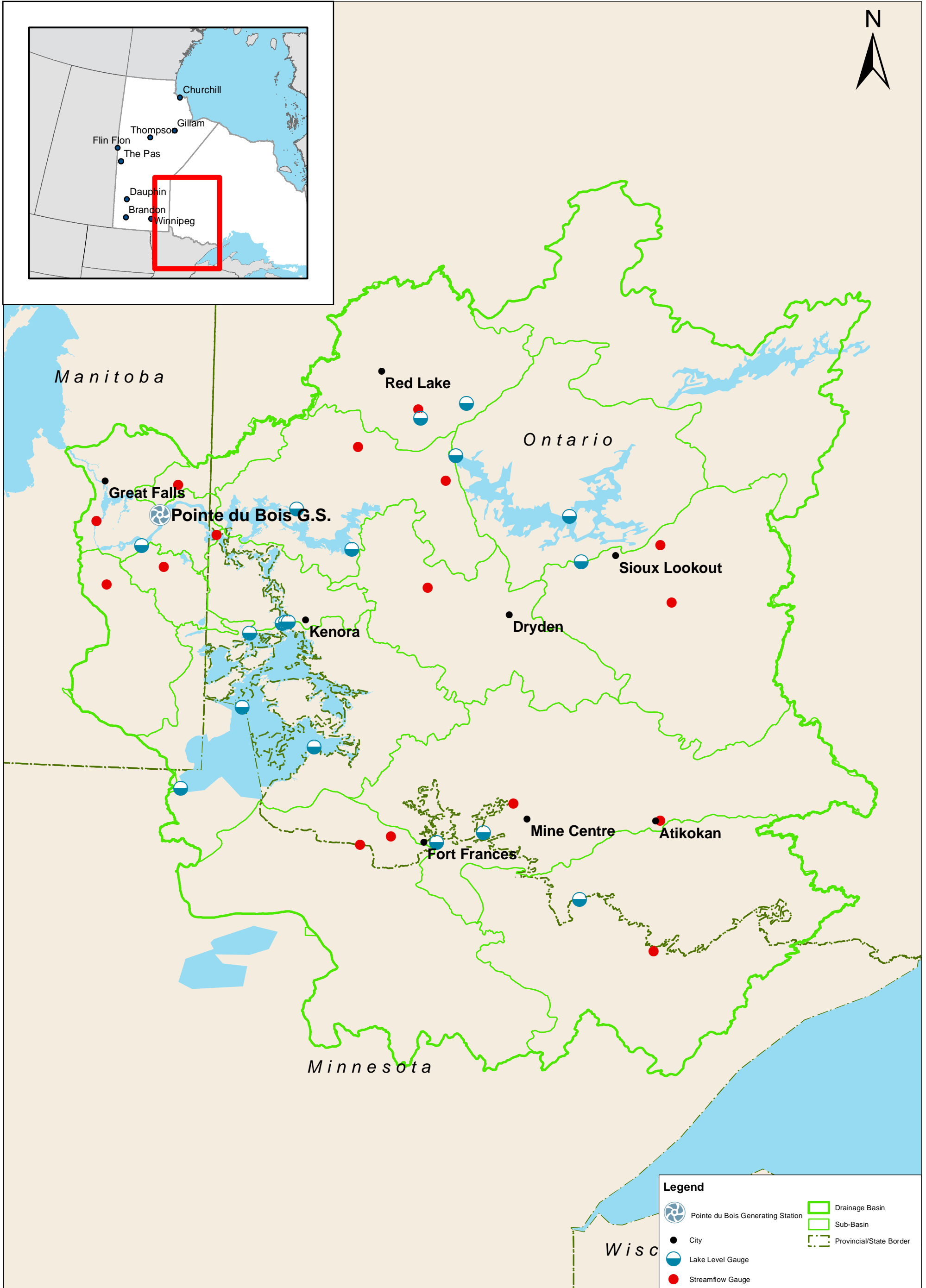
DATA SOURCE: Manitoba Hydro		
DATE CREATED: 20 May 11	CREATED BY: Water Resources Department - Hydrologic and Hydroclimatic Studies	
REVISION NO: Version 1.0	REVISION DATE: 25 May 11	QA/QC: MWZ

Pointe du Bois Spillway Replacement Project

Meteorological Stations

Figure:
7.3

File Location:



Coordinate System: UTM NAD 1983 Z15

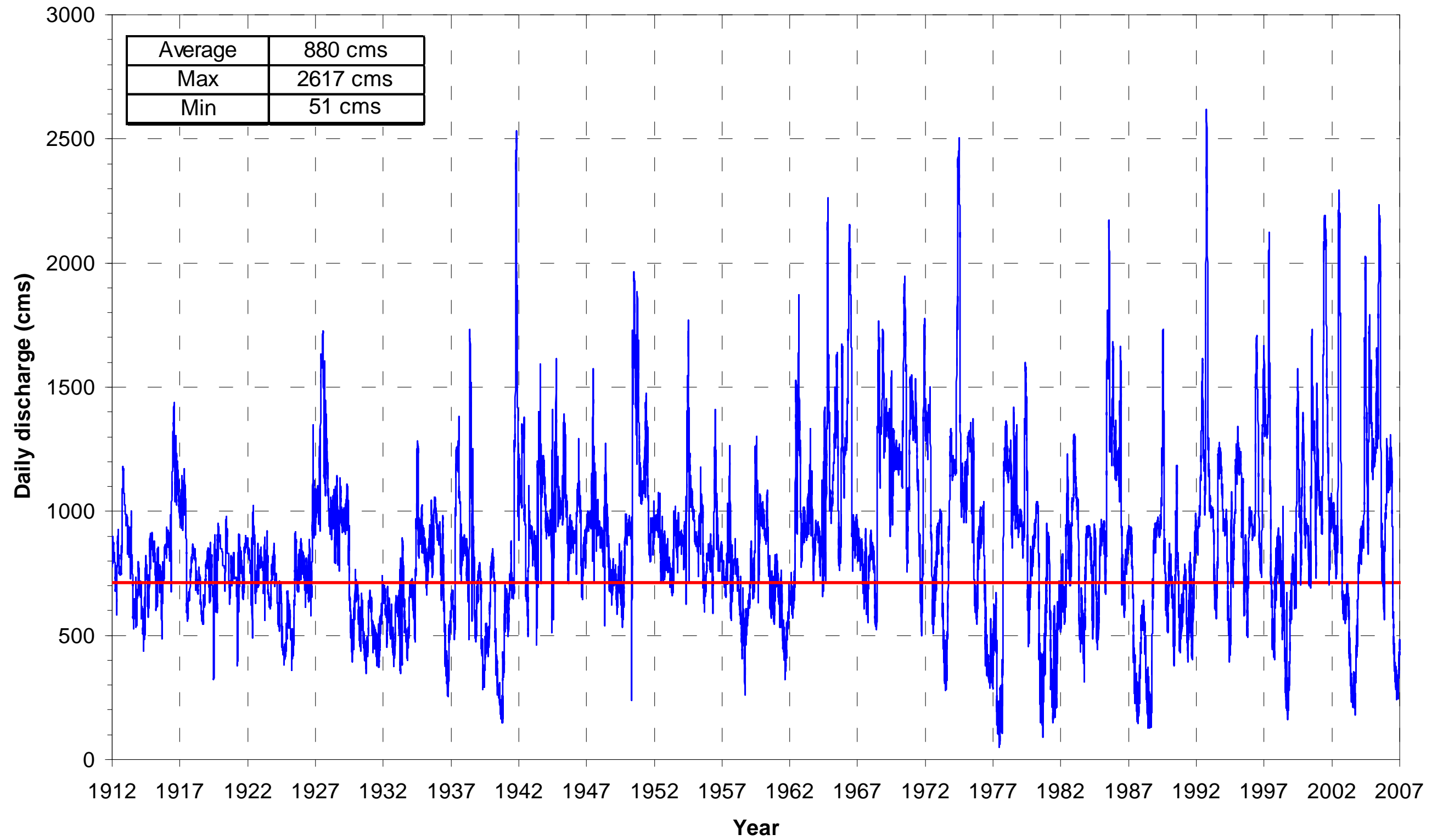
DATA SOURCE: Manitoba Hydro		
DATE CREATED: 16 May 11	CREATED BY: Water Resources Department - Hydrologic and Hydroclimatic Studies	
REVISION NO: Version 1	REVISION DATE: 20 May 11	QA/QC: MWZ

**Pointe du Bois
Spillway Replacement Project**

Winnipeg River Drainage Basin

Figure:
7.4

File Location:



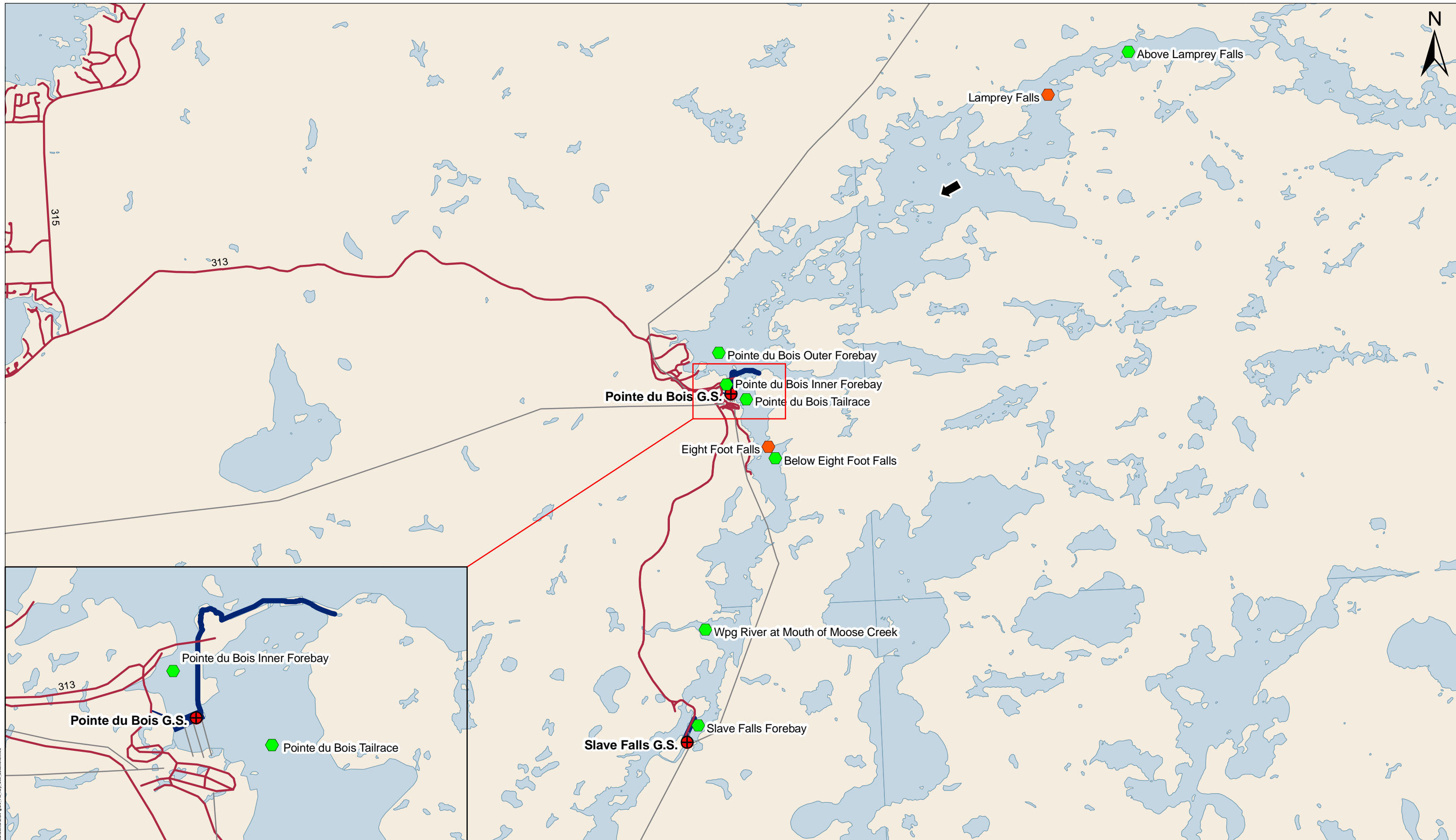
File Location: I:\2010\2010_Points du Bois\Work\400\40002010\2010\2010_Figures_7.5_Daily_Flow_Hydrograph.mxd



DATA SOURCE: Manitoba Hydro		
DATE CREATED: 12 JAN 2011	CREATED BY: Water Resources Engineering	
REVISION NO: VERSION 1.0	REVISION DATE: 26 MAY 2011	QA/QC: KMS / MWZ

Legend	
—	Maximum Existing Powerhouse Discharge Capacity (712 cms)
—	Adjusted Daily Average Discharge (cms)

Pointe du Bois Spillway Replacement Project	
Pointe du Bois GS Adjusted Daily Flow Hydrograph (1912 - 2006)	
Figure:	7.5



File Location: I:\2010\2010 Pointe du Bois\Workshop\Map\20100828\Map 7.8 Key Sites Location.mxd



Coordinate System: UTM NAD 1983 Z14N



DATA SOURCE: Manitoba Hydro		
DATE CREATED: 26 OCT 2010	CREATED BY: Water Resources Engineering	
REVISION NO: VERSION 1.0	REVISION DATE: 27 MAY 2011	QA/QC: KMS / MWZ

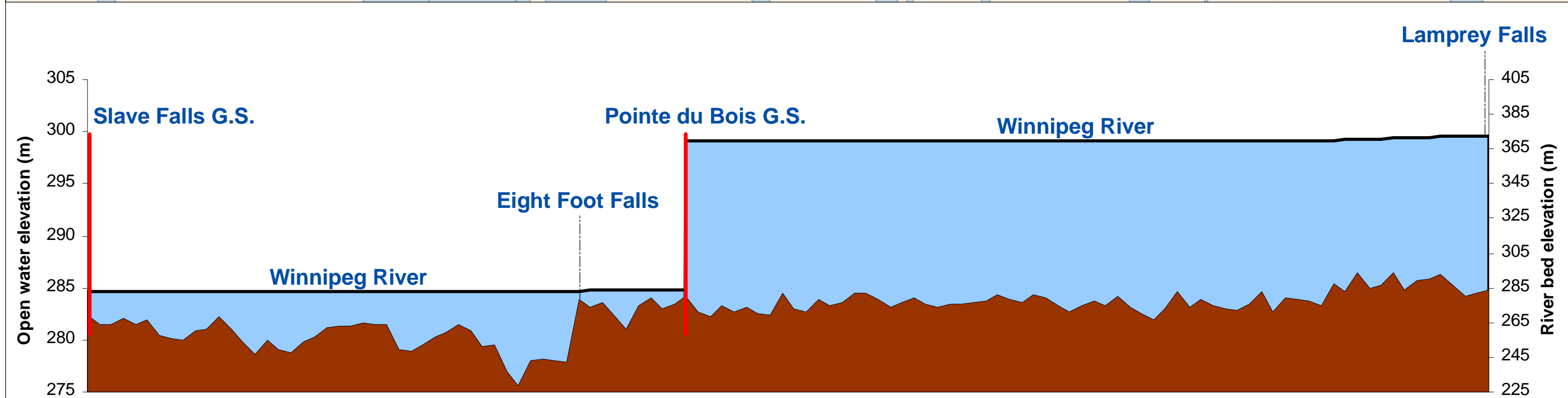
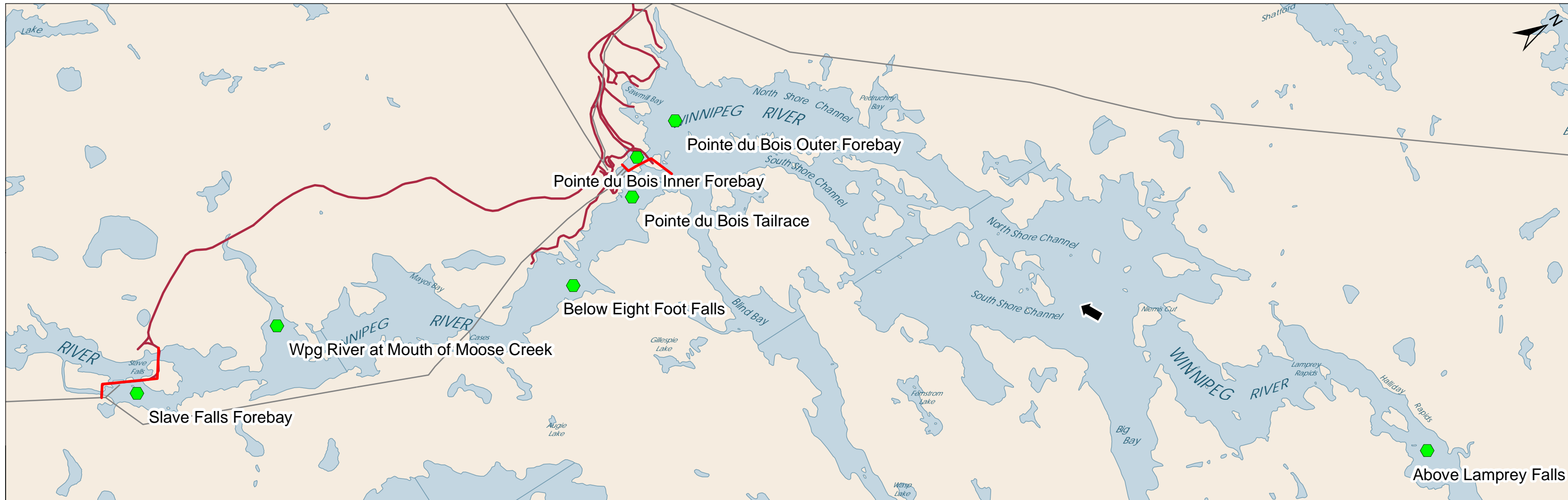
Legend

- ◆ Key Locations Water Regime
- ◆ Key Locations
- Roads
- ⊕ Existing G.S.
- Transmission Lines
- ➔ Direction of Flow

Pointe du Bois Spillway Replacement Project

Key Monitoring Sites

Figure:
7.8



	Coordinate System: UTM NAD 1983 Z14	DATA SOURCE: Manitoba Hydro	Legend (Upper Figure) Key Locations Water Regime Roads Direction of Flow Transmission Lines		Legend (Lower Figure) Open Water Profile (50%) Ground Elevation	Pointe du Bois Spillway Replacement Project Existing Environment Open Water 50th Percentile Water Surface Profile		Figure: 7.9
		DATE CREATED: 10 AUG 2010 REVISION NO: VERSION 1.0	CREATED BY: Water Resources Engineering REVISION DATE: 27 MAY 2011 QA/QC: KMS / MWZ					