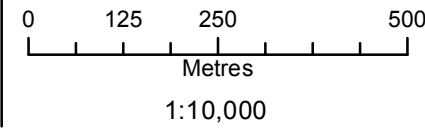


Coordinate System: UTM Zone 14N NAD83
 Data Source: MB Hydro, ProvMB, NRCAN
 Date Created: April 12, 2014
 Version: Draft



- Land Base**
- Transmission Line
 - Highway
 - Major Road
 - Local Road
 - Winter Road
 - Railway (Operational)
 - Railway (Discontinued)
 - First Nation
 - Mining
 - Provincial Forest

- Project Infrastructure**
- * Angle Tower Locations
 - BPIII Final Preferred Route
 - 66 m Right of Way

- Points of Access***
- Proposed Access Point
 - Major Stream Crossing
 - ▲ Abandoned Rail Crossing
 - ▲ Rail Crossing
 - Transmission Line Crossing
 - Proposed Access Route
- *Labels correspond to BPIII Access Management Database

- ESS Features**
- Water**
 - Water Crossing
 - Wildlife**
 - Birds and Habitat
 - Wildlife**
 - Birds and Habitat
 - Water**
 - Water Crossing

**Bipole III Transmission Project
 Construction Environmental Protection Plan
 Construction Section N4
 Environmentally Sensitive Site Locations**

Draft: For Discussion Purposes Only

ESS Group: Birds and Habitat

Sec-Seg ID	ESS ID	ESS Name	Easting	Northing	UTM Zone
C2-S07	C2-Wild-107	Nearby great blue heron colony	504691	5625156	14N

Potential Effects:

Higher risk of wire collision, Disturbance during breeding and nesting, risk of wire collision is localized to the right-of-way while construction disturbance can affect colonies up to 1000 meters away

Specific Mitigation:

- Adhere to reduced risk timing windows for protection of birds (August 1- April 30)
- Maintain applicable setback during nesting and breeding timing window
- Conduct priority assessment for bird diverters and other measures prior to transmission line stringing
- Install bird diverters or other measures at high priority sites

ESS Group: Water Crossing

Sec-Seg ID	ESS ID	ESS Name	Easting	Northing	UTM Zone	Channel Width	Wet Width	Fish Habitat Class	Habitat Sensitivity
C2-S07	C2-Aqua-112	Rocklan Drain	504265	5626110	14N	5m	N/A	Low	Marginal
C2-S07	C2-Aqua-113	Drain	505009	5624444	14N	N/A	N/A	N/A	N/A

Potential Effects:

Habitat loss and contamination from structure foundations & installations; increased erosion & sedimentation of streams; Damage to stream banks; Loss of riparian vegetation; Fish habitat disturbances and impeded fish movement; Rutting of floodplain

Specific Mitigation:

- Carry out construction activities on frozen ground to minimize surface damage, rutting and erosion
- Use existing trails, roads or cut lines whenever possible as access routes
- Identify and flag buffer areas prior to start of work
- Riparian Buffers shall be a minimum of 30m and increase in size based on slope of land entering waterway. Within these buffers shrub and herbaceous understory veg will be maintained along with trees that do not violate MH Veg Clearance Requirements.
- 7m no machine zone will restrict equipment in close proximity to the waterbody except at the trail crossing.
- Adhere to Department of Fisheries and Oceans (DFO) Operational Statements for Temporary Stream Crossings, Ice Bridges and Snow Fills, and Overhead Line Construction

ESS Group: Birds and Habitat

Sec-Seg ID	ESS ID	ESS Name	Location	Start	Stop	UTM Zone	Distance
C2-S07	C2-Wild-108	Waterfowl sensitivity area	Site: L15 to L16	E-505356 N-5623667	E-505709 N-5622877	14N	864m

Potential Effects:

Higher risk of wire collision, Risk of wire collision is localized to the right-of-way

Specific Mitigation:

- Adhere to reduced risk timing windows for protection of birds (August 1- April 30)
- Maintain applicable setback during nesting and breeding timing window
- Conduct priority assessment for bird diverters and other measures prior to transmission line stringing
- Install bird diverters or other measures at high priority sites

ESS Group: Water Crossing

Sec-Seg ID	ESS ID	ESS Name	Location	Start	Stop	UTM Zone	Distance
C2-S07	C2-Aqua-114	Unnamed waterbody	Site: 31 to 32	E-505377 N-5623620	E-505516 N-5623310	14N	340m
C2-S07	C2-Aqua-114	Unnamed waterbody	Site: 33 to 34	E-505533 N-5623272	E-505674 N-5622955	14N	346m

Potential Effects:

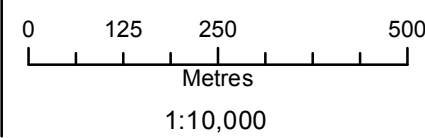
Increased erosion and sedimentation; rutting of floodplains; loss of riparian vegetation

Specific Mitigation:

- Riparian Buffers shall be a minimum of 30m and increase in size based on slope of land entering waterway. Within these buffers shrub and herbaceous understory veg will be maintained along with trees that do not violate MH Veg Clearance Requirements.
- 7m no machine zone will restrict equipment in close proximity to the waterbody except at the trail crossing.



Coordinate System: UTM Zone 14N NAD83
Data Source: MB Hydro, ProvMB, NRCAN
Date Created: April 12, 2014
Version: Draft



- Land Base**
- Transmission Line
 - Highway
 - Major Road
 - Local Road
 - Winter Road
 - Railway (Operational)
 - Railway (Discontinued)
 - First Nation
 - Mining
 - Provincial Forest

- Project Infrastructure**
- * Angle Tower Locations
 - BPIII Final Preferred Route
 - 66 m Right of Way

- Points of Access***
- Proposed Access Point
 - Major Stream Crossing
 - ▲ Abandoned Rail Crossing
 - ▲ Rail Crossing
 - Transmission Line Crossing
 - Proposed Access Route
- *Labels correspond to BPIII Access Management Database

- ESS Features**
- Water**
 - Water Crossing
 - Wildlife**
 - Birds and Habitat
 - Water**
 - Water Crossing

**Bipole III Transmission Project
Construction Environmental Protection Plan
Construction Section N4
Environmentally Sensitive Site Locations**

Draft: For Discussion Purposes Only

ESS Group: Water Crossing

Sec-Seg ID	ESS ID	ESS Name	Easting	Northing	UTM Zone	Channel Width	Wet Width	Fish Habitat Class	Habitat Sensitivity
C2-S07	C2-Aqua-115	Unnamed Creek	506477	5621163	14N	N/A	N/A	N/A	N/A
C2-S07	C2-Aqua-116	Small, unnamed lake	506757	5620536	14N	N/A	N/A	Low	Marginal
C2-S07	C2-Aqua-117	Small, unnamed lake	506873	5620277	14N	N/A	N/A	Low	Marginal
C2-S07	C2-Aqua-118	Small, unnamed lake	506989	5620016	14N	N/A	204m	Low	No Fish Habitat

Potential Effects:

Habitat loss and contamination from structure foundations & installations; increased erosion & sedimentation of streams; Damage to stream banks; Loss of riparian vegetation; Fish habitat disturbances and impeded fish movement; Rutting of floodplain

Specific Mitigation:

- Carry out construction activities on frozen ground to minimize surface damage, rutting and erosion
- Use existing trails, roads or cut lines whenever possible as access routes
- Identify and flag buffer areas prior to start of work
- Riparian Buffers shall be a minimum of 30m and increase in size based on slope of land entering waterway. Within these buffers shrub and herbaceous understory veg will be maintained along with trees that do not violate MH Veg Clearance Requirements.
- 7m no machine zone will restrict equipment in close proximity to the waterbody except at the trail crossing.
- Adhere to Department of Fisheries and Oceans (DFO) Operational Statements for Temporary Stream Crossings, Ice Bridges and Snow Fills, and Overhead Line Construction

ESS Group: Birds and Habitat

Sec-Seg ID	ESS ID	ESS Name	Location	Start	Stop	UTM Zone	Distance
C2-S07	C2-Wild-108	Waterfowl sensitivity area	Site: L15 to L16	E-505356 N-5623667	E-505709 N-5622877	14N	864m
C2-S07	C2-Wild-109	Waterfowl sensitivity area	Site: L17 to L18	E-506637 N-5620802	E-507106 N-5619755	14N	1147m

Potential Effects:

Higher risk of wire collision, Risk of wire collision is localized to the right-of-way

Specific Mitigation:

- Adhere to reduced risk timing windows for protection of birds (August 1- April 30)
- Maintain applicable setback during nesting and breeding timing window
- Conduct priority assessment for bird diverters and other measures prior to transmission line stringing
- Install bird diverters or other measures at high priority sites

ESS Group: Water Crossing

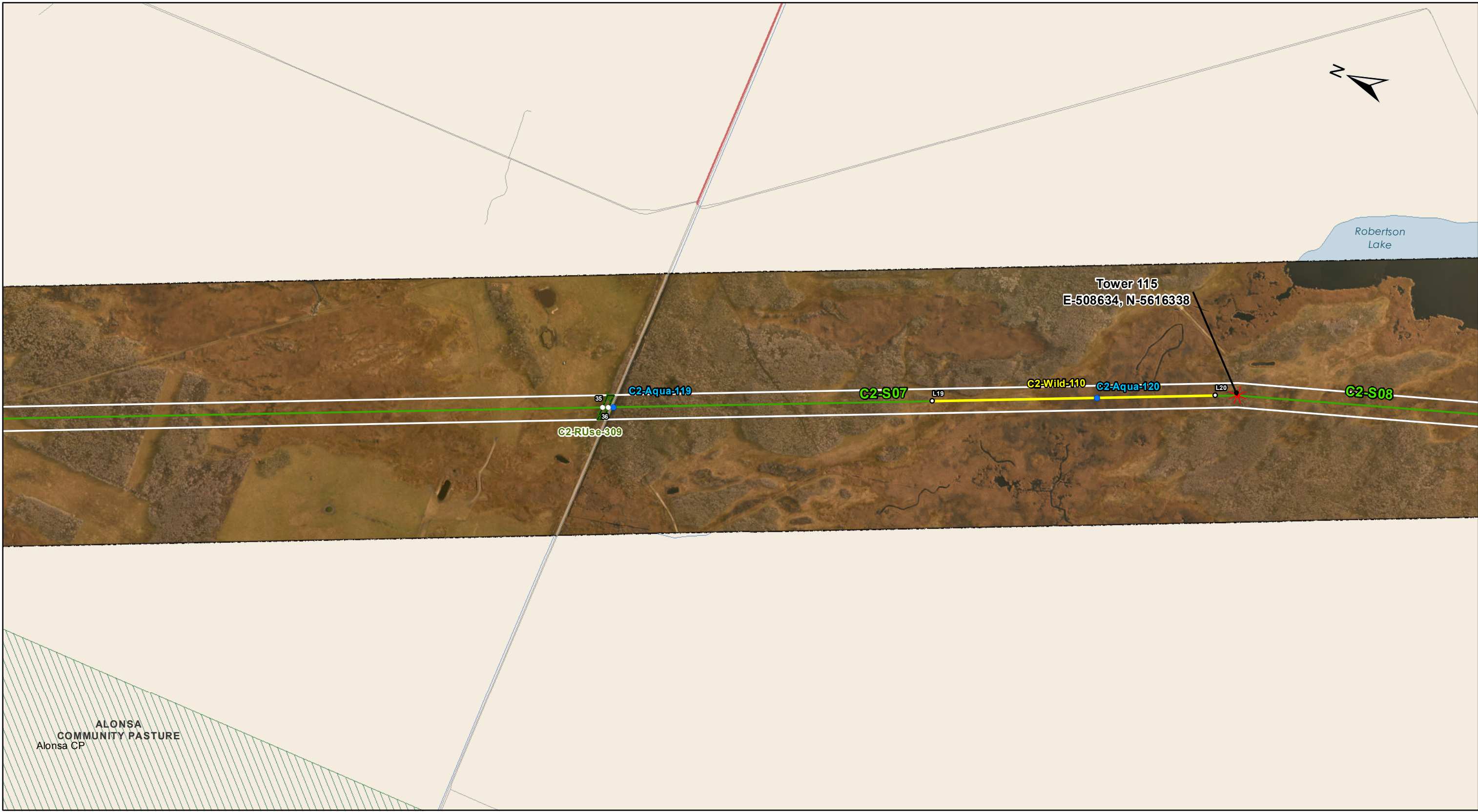
Sec-Seg ID	ESS ID	ESS Name	Location	Start	Stop	UTM Zone	Distance
C2-S07	C2-Aqua-114	Unnamed waterbody	Site: 33 to 34	E-505533 N-5623272	E-505674 N-5622955	14N	346m

Potential Effects:

Increased erosion and sedimentation; rutting of floodplains; loss of riparian vegetation

Specific Mitigation:

- Riparian Buffers shall be a minimum of 30m and increase in size based on slope of land entering waterway. Within these buffers shrub and herbaceous understory veg will be maintained along with trees that do not violate MH Veg Clearance Requirements.
- 7m no machine zone will restrict equipment in close proximity to the waterbody except at the trail crossing.



Coordinate System: UTM Zone 14N NAD83
 Data Source: MB Hydro, ProvMB, NRCAN
 Date Created: April 12, 2014
 Version: Draft

0 125 250 500
 Metres
 1:10,000

- Land Base**
- Transmission Line
 - Highway
 - Major Road
 - Local Road
 - Winter Road
 - Railway (Operational)
 - Railway (Discontinued)
 - First Nation
 - Mining
 - Provincial Forest

- Project Infrastructure**
- * Angle Tower Locations
 - BPIII Final Preferred Route
 - 66 m Right of Way

- Points of Access***
- Proposed Access Point
 - Major Stream Crossing
 - ▲ Abandoned Rail Crossing
 - ▲ Rail Crossing
 - Transmission Line Crossing
 - Proposed Access Route
- *Labels correspond to BPIII Access Management Database

- ESS Features**
- Water**
 - Water Crossing
 - Wildlife**
 - Birds and Habitat
 - Resource Use**
 - Forestry

**Bipole III Transmission Project
 Construction Environmental Protection Plan
 Construction Section N4
 Environmentally Sensitive Site Locations**

Draft: For Discussion Purposes Only

ESS Group: Water Crossing

Sec-Seg ID	ESS ID	ESS Name	Easting	Northing	UTM Zone	Channel Width	Wet Width	Fish Habitat Class	Habitat Sensitivity
C2-S07	C2-Aqua-119	Unnamed road ditch	507943	5617883	14N	N/A	N/A	Low	Marginal
C2-S07	C2-Aqua-120	Unnamed road ditch	507943	5617883	14N	N/A	N/A	Low	Marginal

Potential Effects:

Habitat loss and contamination from structure foundations & installations; increased erosion & sedimentation of streams; Damage to stream banks; Loss of riparian vegetation; Fish habitat disturbances and impeded fish movement; Rutting of floodplain

Specific Mitigation:

- Carry out construction activities on frozen ground to minimize surface damage, rutting and erosion
- Use existing trails, roads or cut lines whenever possible as access routes
- Identify and flag buffer areas prior to start of work
- Riparian Buffers shall be a minimum of 30m and increase in size based on slope of land entering waterway. Within these buffers shrub and herbaceous understory veg will be maintained along with trees that do not violate MH Veg Clearance Requirements.
- 7m no machine zone will restrict equipment in close proximity to the waterbody except at the trail crossing.
- Adhere to Department of Fisheries and Oceans (DFO) Operational Statements for Temporary Stream Crossings, Ice Bridges and Snow Fills, and Overhead Line Construction

ESS Group: Forestry

Sec-Seg ID	ESS ID	ESS Name	Location	Start	Stop	UTM Zone	Distance
C2-S07	C2-RUse-309	Shelterbelt	Site: 35 to 36	E-507931 N-5617909	E-507937 N-5617894	14N	15m

Potential Effects:

Removal in area of ROW intersect

Specific Mitigation:

- Carry out construction activities on frozen or dry ground to minimize surface damage, rutting and erosion
- Identify and flag prior to start of work
- Burn clearing debris during winter months only and ensure that all fires are extinguished prior to spring break-up
- Notify landowner regarding construction activities and schedule, and address concerns prior to start of work
- Where applicable, ensure compensation agreement is in place prior to start of work
- Use existing access trails, roads or cut lines whenever possible as access routes
- Limit all equipment to project footprint only, where possible

ESS Group: Birds and Habitat

Sec-Seg ID	ESS ID	ESS Name	Location	Start	Stop	UTM Zone	Distance
C2-S07	C2-Wild-110	Waterfowl sensitivity area	Site: L19 to L20	E-508296 N-5617093	E-508609 N-5616392	14N	768m

Potential Effects:

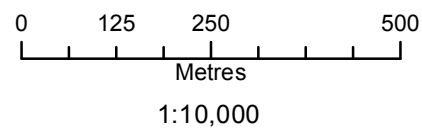
Higher risk of wire collision, Risk of wire collision is localized to the right-of-way

Specific Mitigation:

- Adhere to reduced risk timing windows for protection of birds (August 1- April 30)
- Maintain applicable setback during nesting and breeding timing window
- Conduct priority assessment for bird diverters and other measures prior to transmission line stringing
- Install bird diverters or other measures at high priority sites



Coordinate System: UTM Zone 14N NAD83
 Data Source: MB Hydro, ProvMB, NRCAN
 Date Created: April 12, 2014
 Version: Draft



- Land Base**
- Transmission Line
 - Highway
 - Major Road
 - Local Road
 - Winter Road
 - Railway (Operational)
 - Railway (Discontinued)
 - First Nation
 - Mining
 - Provincial Forest

- Project Infrastructure**
- * Angle Tower Locations
 - BPIII Final Preferred Route
 - 66 m Right of Way

- Points of Access***
- Proposed Access Point
 - Major Stream Crossing
 - ▲ Abandoned Rail Crossing
 - ▲ Rail Crossing
 - Transmission Line Crossing
 - Proposed Access Route
- *Labels correspond to BPIII Access Management Database

- ESS Features**
- Heritage**
 - Archaeological
 - Water**
 - Water Crossing
 - Wildlife**
 - Birds and Habitat
 - Water**
 - Water Crossing

**Bipole III Transmission Project
 Construction Environmental Protection Plan
 Construction Section N4
 Environmentally Sensitive Site Locations**

Draft: For Discussion Purposes Only

ESS Group: Water Crossing

Sec-Seg ID	ESS ID	ESS Name	Easting	Northing	UTM Zone	Channel Width	Wet Width	Fish Habitat Class	Habitat Sensitivity
C2-S08	C2-Aqua-122	Drain	509212	5614604	14N	N/A	N/A	N/A	N/A

Potential Effects:

Habitat loss and contamination from structure foundations & installations; increased erosion & sedimentation of streams; Damage to stream banks; Loss of riparian vegetation; Fish habitat disturbances and impeded fish movement; Rutting of floodplain

Specific Mitigation:

- Carry out construction activities on frozen ground to minimize surface damage, rutting and erosion
- Use existing trails, roads or cut lines whenever possible as access routes
- Identify and flag buffer areas prior to start of work
- Riparian Buffers shall be a minimum of 30m and increase in size based on slope of land entering waterway. Within these buffers shrub and herbaceous understory veg will be maintained along with trees that do not violate MH Veg Clearance Requirements.
- 7m no machine zone will restrict equipment in close proximity to the waterbody except at the trail crossing.
- Adhere to Department of Fisheries and Oceans (DFO) Operational Statements for Temporary Stream Crossings, Ice Bridges and Snow Fills, and Overhead Line Construction

ESS Group: Water Crossing

Sec-Seg ID	ESS ID	ESS Name	Location	Start	Stop	UTM Zone	Distance
C2-S08	C2-Aqua-121	Small, unnamed waterbody	Site: 37 to 38	E-508885 N-5615583	E-508887 N-5615576	14N	7m

Potential Effects:

Increased erosion and sedimentation; rutting of floodplains; loss of riparian vegetation

Specific Mitigation:

- Riparian Buffers shall be a minimum of 30m and increase in size based on slope of land entering waterway. Within these buffers shrub and herbaceous understory veg will be maintained along with trees that do not violate MH Veg Clearance Requirements.
- 7m no machine zone will restrict equipment in close proximity to the waterbody except at the trail crossing.

ESS Group: Birds and Habitat

Sec-Seg ID	ESS ID	ESS Name	Location	Start	Stop	UTM Zone	Distance
C2-S08	C2-Wild-111	Waterfowl sensitivity area	Site: L21 to L22	E-508964 N-5615345	E-509365 N-5614144	14N	1265m

Potential Effects:

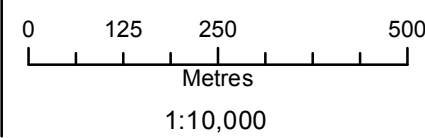
Higher risk of wire collision, Risk of wire collision is localized to the right-of-way

Specific Mitigation:

- Adhere to reduced risk timing windows for protection of birds (August 1- April 30)
- Maintain applicable setback during nesting and breeding timing window
- Conduct priority assessment for bird diverters and other measures prior to transmission line stringing
- Install bird diverters or other measures at high priority sites



Coordinate System: UTM Zone 14N NAD83
 Data Source: MB Hydro, ProvMB, NRCAN
 Date Created: April 12, 2014
 Version: Draft



- Land Base**
- Transmission Line
 - Highway
 - Major Road
 - Local Road
 - Winter Road
 - Railway (Operational)
 - Railway (Discontinued)
 - First Nation
 - Mining
 - Provincial Forest

- Project Infrastructure**
- * Angle Tower Locations
 - BPIII Final Preferred Route
 - 66 m Right of Way

- Points of Access***
- Proposed Access Point
 - Major Stream Crossing
 - ▲ Abandoned Rail Crossing
 - ▲ Rail Crossing
 - Transmission Line Crossing
 - Proposed Access Route
- *Labels correspond to BPIII Access Management Database

- ESS Features**
- Water
 - Water Crossing
 - Wildlife
 - Birds and Habitat

**Bipole III Transmission Project
 Construction Environmental Protection Plan
 Construction Section N4
 Environmentally Sensitive Site Locations**

Draft: For Discussion Purposes Only

ESS Group: Water Crossing

Sec-Seg ID	ESS ID	ESS Name	Easting	Northing	UTM Zone	Channel Width	Wet Width	Fish Habitat Class	Habitat Sensitivity
C2-S09	C2-Aqua-123	Drain	510567	5611339	14N	N/A	N/A	N/A	N/A
C2-S09	C2-Aqua-124	Unnamed Creek	511081	5610228	14N	N/A	N/A	N/A	N/A

Potential Effects:

Habitat loss and contamination from structure foundations & installations; increased erosion & sedimentation of streams; Damage to stream banks; Loss of riparian vegetation; Fish habitat disturbances and impeded fish movement; Rutting of floodplain

Specific Mitigation:

- Carry out construction activities on frozen ground to minimize surface damage, rutting and erosion
- Use existing trails, roads or cut lines whenever possible as access routes
- Identify and flag buffer areas prior to start of work
- Riparian Buffers shall be a minimum of 30m and increase in size based on slope of land entering waterway. Within these buffers shrub and herbaceous understory veg will be maintained along with trees that do not violate MH Veg Clearance Requirements.
- 7m no machine zone will restrict equipment in close proximity to the waterbody except at the trail crossing.
- Adhere to Department of Fisheries and Oceans (DFO) Operational Statements for Temporary Stream Crossings, Ice Bridges and Snow Fills, and Overhead Line Construction

ESS Group: Birds and Habitat

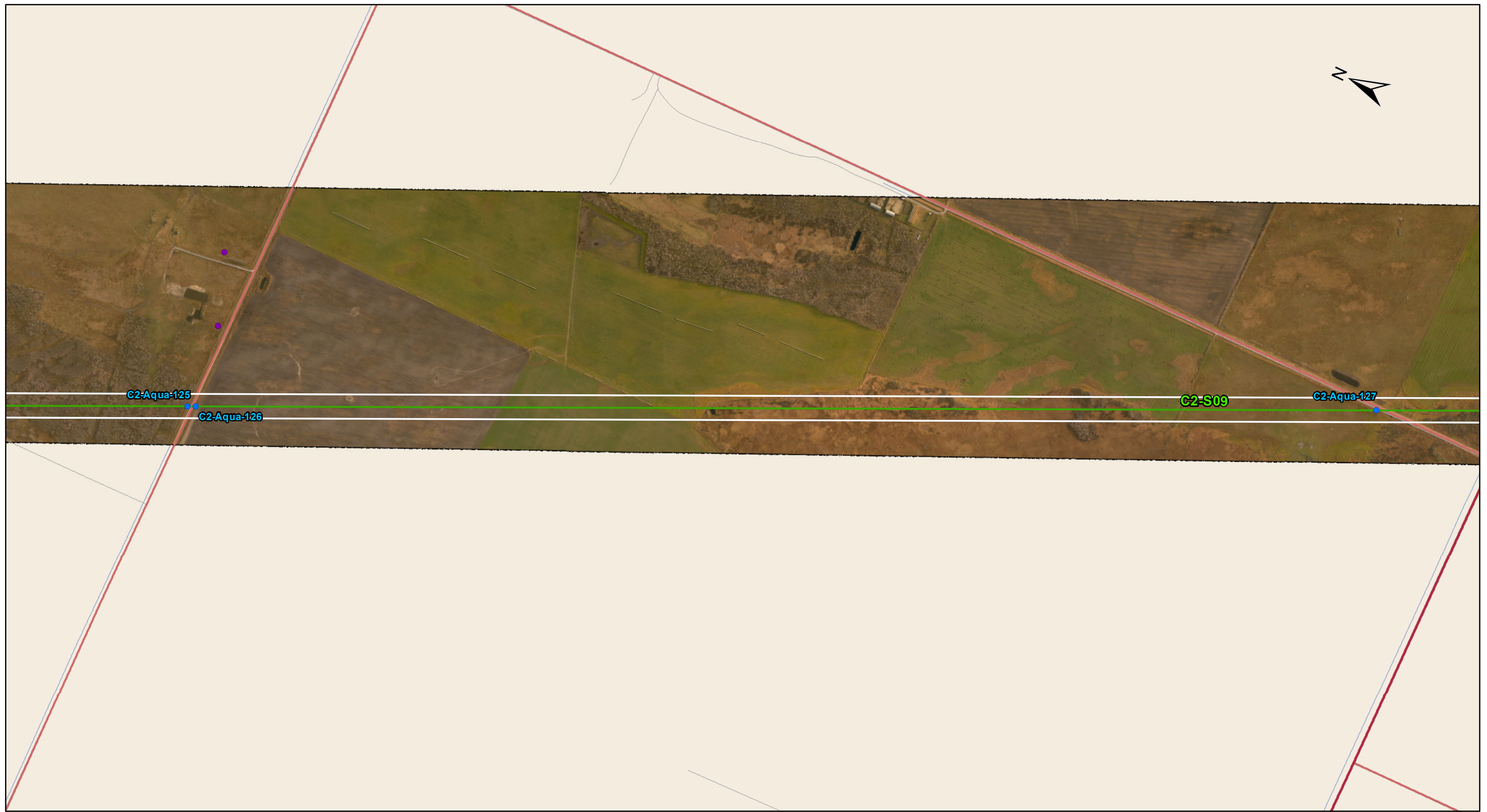
Sec-Seg ID	ESS ID	ESS Name	Location	Start	Stop	UTM Zone	Distance
C2-S09	C2-Wild-112	Waterfowl and yellow rail sensitivity area	Site: L23 to L24	E-510290 N-5611937	E-510492 N-5611500	14N	481m
C2-S09	C2-Wild-113	Waterfowl sensitivity area	Site: L25 to L26	E-511033 N-5610330	E-511320 N-5609709	14N	684m

Potential Effects:

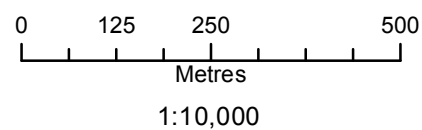
C2-Wild-113: *Higher risk of wire collision, Risk of wire collision is localized to the right-of-way*
 C2-Wild-112: *Higher risk of wire collision, Disturbance during breeding and nesting, Risk of wire collision is localized to the right-of-way while construction disturbance can effect colonies up to 350 meters away*

Specific Mitigation:

- Adhere to reduced risk timing windows for protection of birds (August 1- April 30)
- Maintain applicable setback during nesting and breeding timing window
- Conduct priority assessment for bird diverters and other measures prior to transmission line stringing
- Install bird diverters or other measures at high priority sites



Coordinate System: UTM Zone 14N NAD83
 Data Source: MB Hydro, ProvMB, NRCAN
 Date Created: April 12, 2014
 Version: Draft



- Land Base**
- Transmission Line
 - Highway
 - Major Road
 - Local Road
 - Winter Road
 - Railway (Operational)
 - Railway (Discontinued)
 - First Nation
 - Mining
 - Provincial Forest

- Project Infrastructure**
- * Angle Tower Locations
 - BPIII Final Preferred Route
 - 66 m Right of Way

- Points of Access***
- Proposed Access Point
 - Major Stream Crossing
 - ▲ Abandoned Rail Crossing
 - ▲ Rail Crossing
 - Transmission Line Crossing
 - Proposed Access Route
- *Labels correspond to BPIII Access Management Database

- ESS Features**
- Heritage**
 - Archaeological
 - Water**
 - Water Crossing

**Bipole III Transmission Project
 Construction Environmental Protection Plan
 Construction Section N4
 Environmentally Sensitive Site Locations**

Draft: For Discussion Purposes Only

ESS Group: Water Crossing

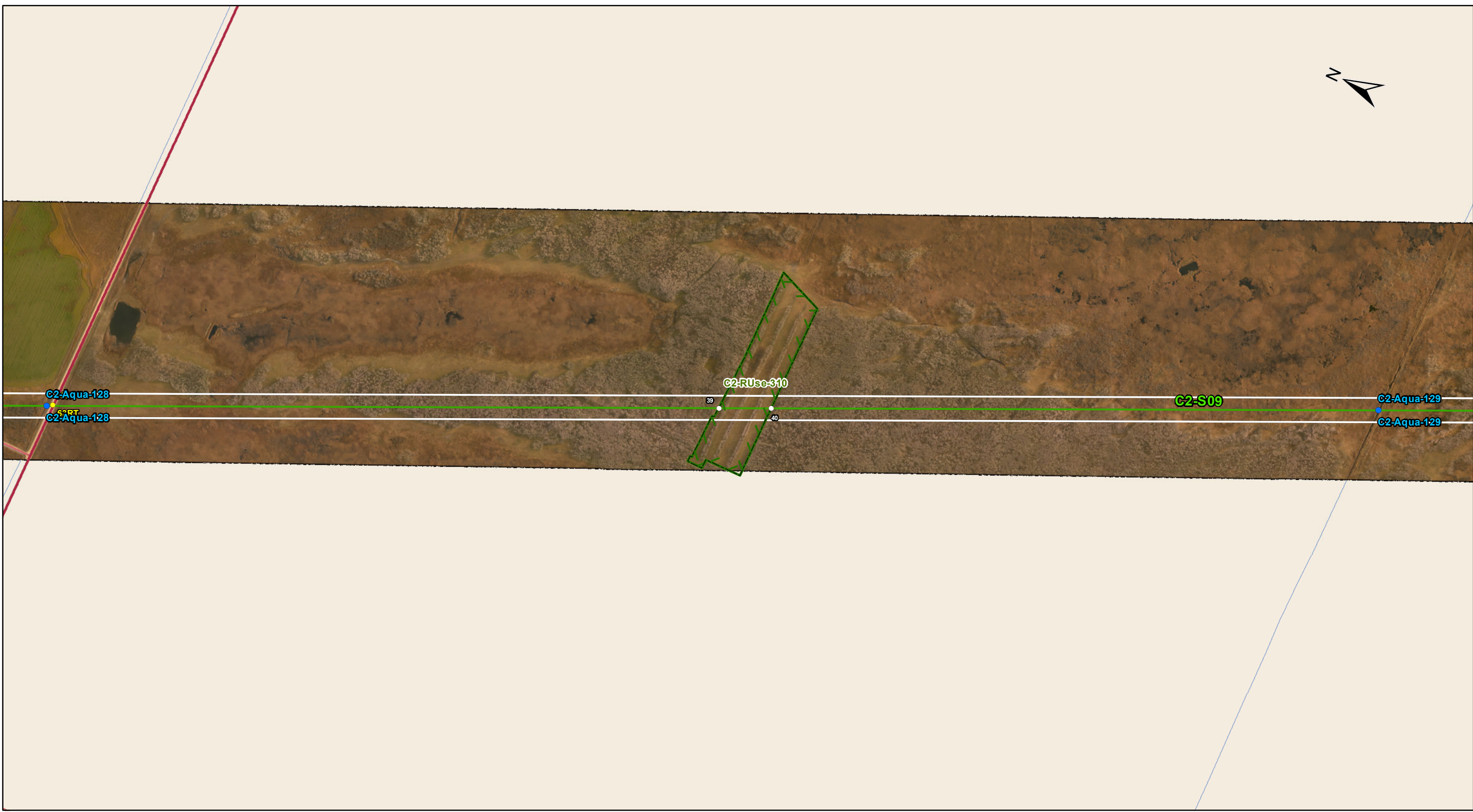
Sec-Seg ID	ESS ID	ESS Name	Easting	Northing	UTM Zone	Channel Width	Wet Width	Fish Habitat Class	Habitat Sensitivity
C2-S09	C2-Aqua-125	Drain	510567	5611339	14N	N/A	N/A	N/A	N/A
C2-S09	C2-Aqua-126	Drain	510567	5611339	14N	N/A	N/A	N/A	N/A
C2-S09	C2-Aqua-127	Drain	513438	5605129	14N	N/A	N/A	N/A	N/A

Potential Effects:

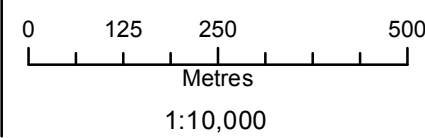
Habitat loss and contamination from structure foundations & installations; increased erosion & sedimentation of streams; Damage to stream banks; Loss of riparian vegetation; Fish habitat disturbances and impeded fish movement; Rutting of floodplain

Specific Mitigation:

- Carry out construction activities on frozen ground to minimize surface damage, rutting and erosion
- Use existing trails, roads or cut lines whenever possible as access routes
- Identify and flag buffer areas prior to start of work
- Riparian Buffers shall be a minimum of 30m and increase in size based on slope of land entering waterway. Within these buffers shrub and herbaceous understory veg will be maintained along with trees that do not violate MH Veg Clearance Requirements.
- 7m no machine zone will restrict equipment in close proximity to the waterbody except at the trail crossing.
- Adhere to Department of Fisheries and Oceans (DFO) Operational Statements for Temporary Stream Crossings, Ice Bridges and Snow Fills, and Overhead Line Construction



Coordinate System: UTM Zone 14N NAD83
 Data Source: MB Hydro, ProvMB, NRCAN
 Date Created: April 12, 2014
 Version: Draft



- Land Base**
- Transmission Line
 - Highway
 - Major Road
 - Local Road
 - Winter Road
 - Railway (Operational)
 - Railway (Discontinued)
 - First Nation
 - Mining
 - Provincial Forest

- Project Infrastructure**
- * Angle Tower Locations
 - BPIII Final Preferred Route
 - 66 m Right of Way

- Points of Access***
- Proposed Access Point
 - Major Stream Crossing
 - ▲ Abandoned Rail Crossing
 - ▲ Rail Crossing
 - Transmission Line Crossing
 - Proposed Access Route
- *Labels correspond to BPIII Access Management Database

- ESS Features**
- Water**
 - Water Crossing
 - Resource Use**
 - Forestry

**Bipole III Transmission Project
 Construction Environmental Protection Plan
 Construction Section N4
 Environmentally Sensitive Site Locations**

Draft: For Discussion Purposes Only

ESS Group: Water Crossing

Sec-Seg ID	ESS ID	ESS Name	Easting	Northing	UTM Zone	Channel Width	Wet Width	Fish Habitat Class	Habitat Sensitivity
C2-S09	C2-Aqua-128	Drain	513589	5604803	14N	N/A	N/A	N/A	N/A
C2-S09	C2-Aqua-129	Drain	515109	5601515	14N	N/A	N/A	N/A	N/A

Potential Effects:

Habitat loss and contamination from structure foundations & installations; increased erosion & sedimentation of streams; Damage to stream banks; Loss of riparian vegetation; Fish habitat disturbances and impeded fish movement; Rutting of floodplain

Specific Mitigation:

- Carry out construction activities on frozen ground to minimize surface damage, rutting and erosion
- Use existing trails, roads or cut lines whenever possible as access routes
- Identify and flag buffer areas prior to start of work
- Riparian Buffers shall be a minimum of 30m and increase in size based on slope of land entering waterway. Within these buffers shrub and herbaceous understory veg will be maintained along with trees that do not violate MH Veg Clearance Requirements.
- 7m no machine zone will restrict equipment in close proximity to the waterbody except at the trail crossing.
- Adhere to Department of Fisheries and Oceans (DFO) Operational Statements for Temporary Stream Crossings, Ice Bridges and Snow Fills, and Overhead Line Construction

ESS Group: Forestry

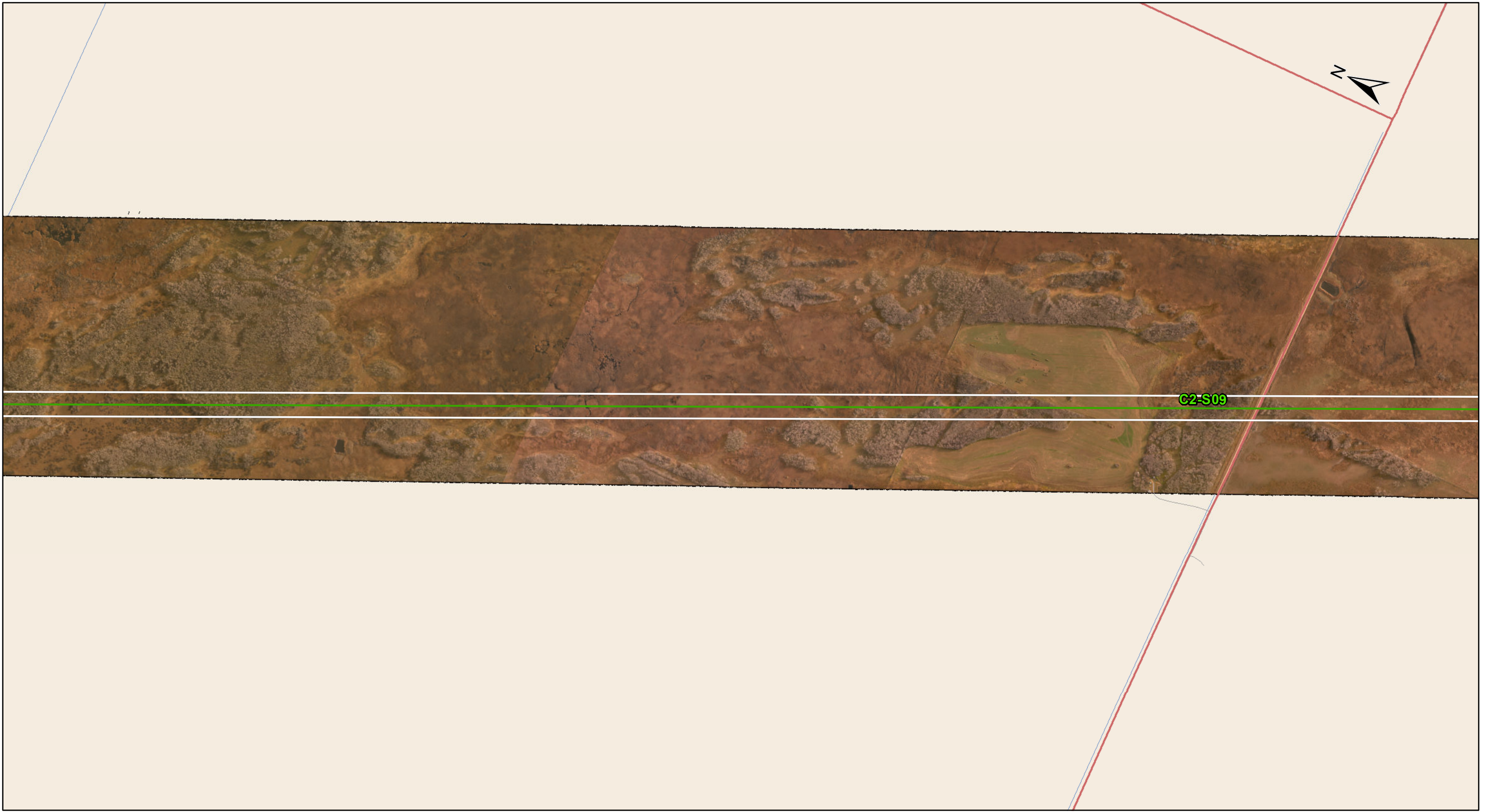
Sec-Seg ID	ESS ID	ESS Name	Location	Start	Stop	UTM Zone	Distance
C2-S09	C2-RUse-310	Windrows	Site: 39 to 40	E-514356 N-5603142	E-514416 N-5603012	14N	143m

Potential Effects:

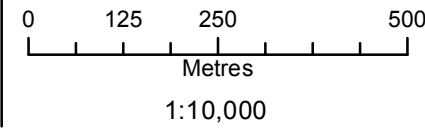
Removal in area of ROW intersect

Specific Mitigation:

- Carry out construction activities on frozen or dry ground to minimize surface damage, rutting and erosion
- Identify and flag prior to start of work
- Burn clearing debris during winter months only and ensure that all fires are extinguished prior to spring break-up
- Notify landowner regarding construction activities and schedule, and address concerns prior to start of work
- Where applicable, ensure compensation agreement is in place prior to start of work
- Use existing access trails, roads or cut lines whenever possible as access routes
- Limit all equipment to project footprint only, where possible



Coordinate System: UTM Zone 14N NAD83
 Data Source: MB Hydro, ProvMB, NRCAN
 Date Created: April 12, 2014
 Version: Draft



- Land Base**
- Transmission Line
 - Highway
 - Major Road
 - Local Road
 - Winter Road
 - Railway (Operational)
 - Railway (Discontinued)
 - First Nation
 - Mining
 - Provincial Forest

- Project Infrastructure**
- * Angle Tower Locations
 - BPIII Final Preferred Route
 - 66 m Right of Way

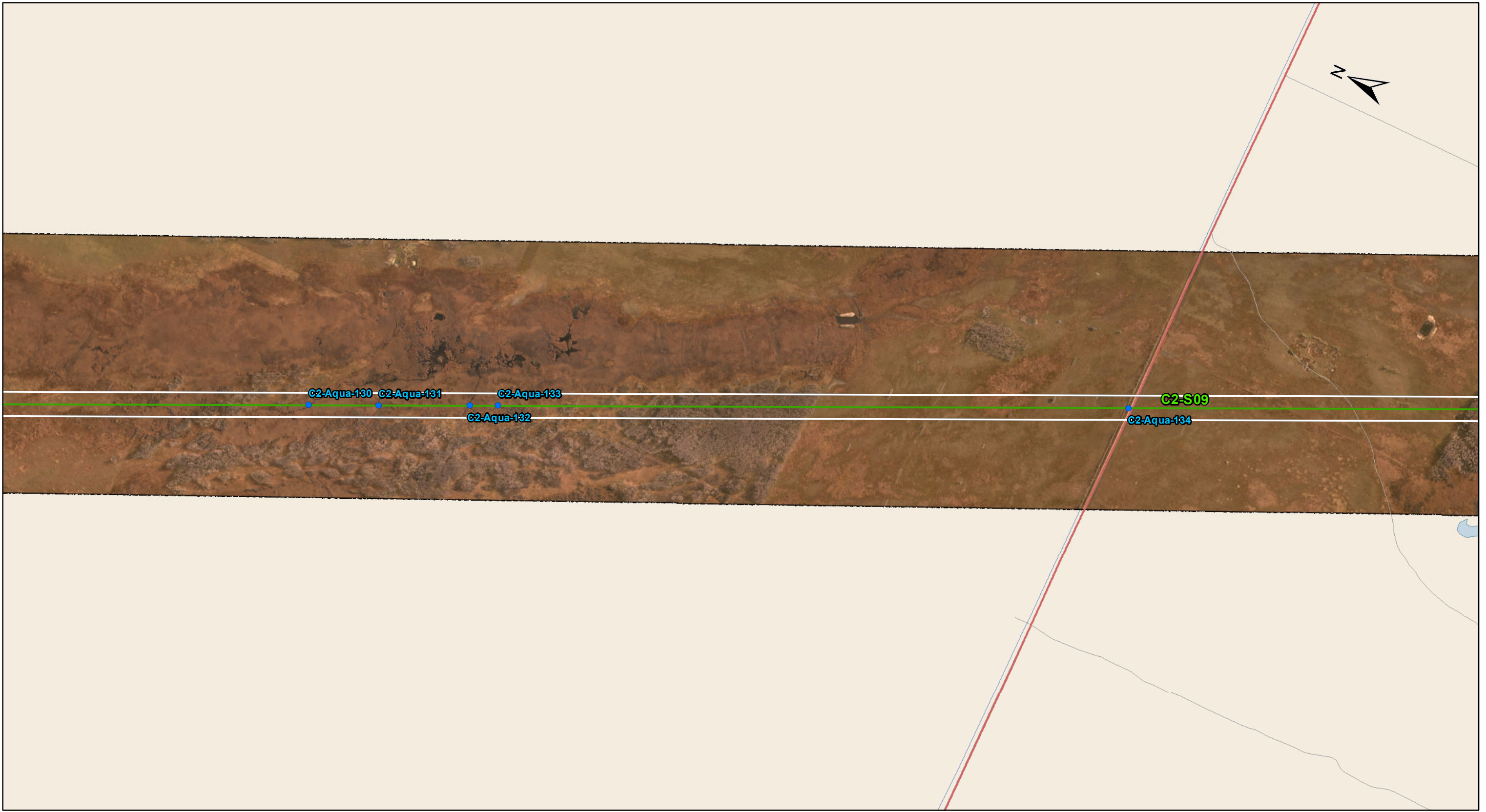
- Points of Access***
- Proposed Access Point
 - Major Stream Crossing
 - ▲ Abandoned Rail Crossing
 - ▲ Rail Crossing
 - Transmission Line Crossing
 - Proposed Access Route
- *Labels correspond to BPIII Access Management Database

ESS Features

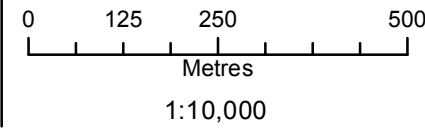
**Bipole III Transmission Project
 Construction Environmental Protection Plan
 Construction Section N4
 Environmentally Sensitive Site Locations**

Draft: For Discussion Purposes Only

This page is intentionally left blank.



Coordinate System: UTM Zone 14N NAD83
 Data Source: MB Hydro, ProvMB, NRCAN
 Date Created: April 12, 2014
 Version: Draft



- Land Base**
- Transmission Line
 - Highway
 - Major Road
 - Local Road
 - Winter Road
 - Railway (Operational)
 - Railway (Discontinued)
 - First Nation
 - Mining
 - Provincial Forest

- Project Infrastructure**
- * Angle Tower Locations
 - BPIII Final Preferred Route
 - 66 m Right of Way

- Points of Access***
- Proposed Access Point
 - Major Stream Crossing
 - ▲ Abandoned Rail Crossing
 - ▲ Rail Crossing
 - Transmission Line Crossing
 - Proposed Access Route
- *Labels correspond to BPIII Access Management Database

- ESS Features**
- Water**
- Water Crossing

**Bipole III Transmission Project
 Construction Environmental Protection Plan
 Construction Section N4
 Environmentally Sensitive Site Locations**

Draft: For Discussion Purposes Only

ESS Group: Water Crossing

Sec-Seg ID	ESS ID	ESS Name	Easting	Northing	UTM Zone	Channel Width	Wet Width	Fish Habitat Class	Habitat Sensitivity
C2-S09	C2-Aqua-130	Unnamed Creek	517211	5596969	14N	N/A	N/A	N/A	N/A
C2-S09	C2-Aqua-131	Unnamed Creek	517290	5596797	14N	N/A	N/A	N/A	N/A
C2-S09	C2-Aqua-132	Unnamed Creek	517394	5596572	14N	N/A	N/A	N/A	N/A
C2-S09	C2-Aqua-133	Unnamed Creek	517427	5596503	14N	N/A	N/A	N/A	N/A
C2-S09	C2-Aqua-134	Drain	518143	5594953	14N	N/A	N/A	N/A	N/A

Potential Effects:

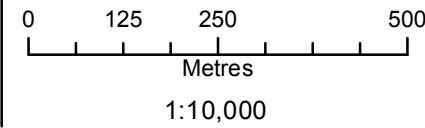
Habitat loss and contamination from structure foundations & installations; increased erosion & sedimentation of streams; Damage to stream banks; Loss of riparian vegetation; Fish habitat disturbances and impeded fish movement; Rutting of floodplain

Specific Mitigation:

- Carry out construction activities on frozen ground to minimize surface damage, rutting and erosion
- Use existing trails, roads or cut lines whenever possible as access routes
- Identify and flag buffer areas prior to start of work
- Riparian Buffers shall be a minimum of 30m and increase in size based on slope of land entering waterway. Within these buffers shrub and herbaceous understory veg will be maintained along with trees that do not violate MH Veg Clearance Requirements.
- 7m no machine zone will restrict equipment in close proximity to the waterbody except at the trail crossing.
- Adhere to Department of Fisheries and Oceans (DFO) Operational Statements for Temporary Stream Crossings, Ice Bridges and Snow Fills, and Overhead Line Construction



Coordinate System: UTM Zone 14N NAD83
 Data Source: MB Hydro, ProvMB, NRCAN
 Date Created: April 12, 2014
 Version: Draft



- Land Base**
- Transmission Line
 - Highway
 - Major Road
 - Local Road
 - Winter Road
 - Railway (Operational)
 - Railway (Discontinued)
 - First Nation
 - Mining
 - Provincial Forest

- Project Infrastructure**
- * Angle Tower Locations
 - BPIII Final Preferred Route
 - 66 m Right of Way

- Points of Access***
- Proposed Access Point
 - Major Stream Crossing
 - ▲ Abandoned Rail Crossing
 - ▲ Rail Crossing
 - Transmission Line Crossing
 - Proposed Access Route
- *Labels correspond to BPIII Access Management Database

- ESS Features**
- Water**
- Water Crossing

**Bipole III Transmission Project
 Construction Environmental Protection Plan
 Construction Section N4
 Environmentally Sensitive Site Locations**

Draft: For Discussion Purposes Only

ESS Group: Water Crossing

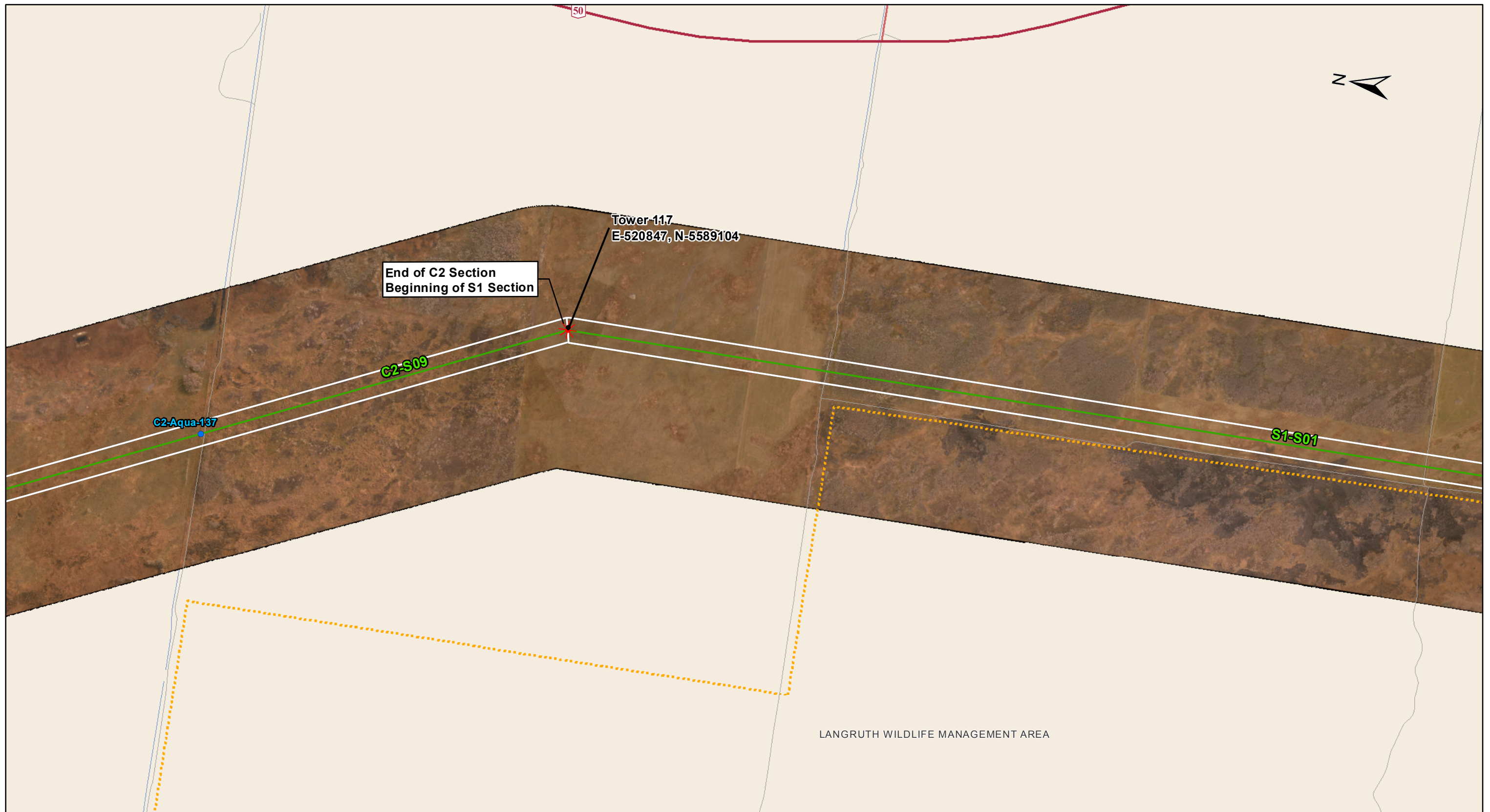
Sec-Seg ID	ESS ID	ESS Name	Easting	Northing	UTM Zone	Channel Width	Wet Width	Fish Habitat Class	Habitat Sensitivity
C2-S09	C2-Aqua-135	Drain	519660	5591673	14N	N/A	N/A	N/A	N/A
C2-S09	C2-Aqua-136	Drain	519660	5591673	14N	N/A	N/A	N/A	N/A

Potential Effects:

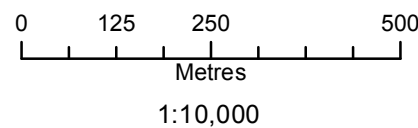
Habitat loss and contamination from structure foundations & installations; increased erosion & sedimentation of streams; Damage to stream banks; Loss of riparian vegetation; Fish habitat disturbances and impeded fish movement; Rutting of floodplain

Specific Mitigation:

- Carry out construction activities on frozen ground to minimize surface damage, rutting and erosion
- Use existing trails, roads or cut lines whenever possible as access routes
- Identify and flag buffer areas prior to start of work
- Riparian Buffers shall be a minimum of 30m and increase in size based on slope of land entering waterway. Within these buffers shrub and herbaceous understory veg will be maintained along with trees that do not violate MH Veg Clearance Requirements.
- 7m no machine zone will restrict equipment in close proximity to the waterbody except at the trail crossing.
- Adhere to Department of Fisheries and Oceans (DFO) Operational Statements for Temporary Stream Crossings, Ice Bridges and Snow Fills, and Overhead Line Construction



Coordinate System: UTM Zone 14N NAD83
 Data Source: MB Hydro, ProvMB, NRCAN
 Date Created: April 12, 2014
 Version: Draft



- Land Base**
- Transmission Line
 - Highway
 - Major Road
 - Local Road
 - Winter Road
 - Railway (Operational)
 - Railway (Discontinued)
 - First Nation
 - Mining
 - Provincial Forest

- Project Infrastructure**
- * Angle Tower Locations
 - BPIII Final Preferred Route
 - 66 m Right of Way

- Points of Access***
- Proposed Access Point
 - Major Stream Crossing
 - ▲ Abandoned Rail Crossing
 - ▲ Rail Crossing
 - Transmission Line Crossing
 - Proposed Access Route
- *Labels correspond to BPIII Access Management Database

- ESS Features**
- Water**
- Water Crossing

**Bipole III Transmission Project
 Construction Environmental Protection Plan
 Construction Section N4
 Environmentally Sensitive Site Locations**

Draft: For Discussion Purposes Only

ESS Group: Water Crossing

Sec-Seg ID	ESS ID	ESS Name	Easting	Northing	UTM Zone	Channel Width	Wet Width	Fish Habitat Class	Habitat Sensitivity
C2-S09	C2-Aqua-137	Unnamed Creek	520444	5590067	14N	N/A	N/A	N/A	N/A

Potential Effects:

Habitat loss and contamination from structure foundations & installations; increased erosion & sedimentation of streams; Damage to stream banks; Loss of riparian vegetation; Fish habitat disturbances and impeded fish movement; Rutting of floodplain

Specific Mitigation:

- Carry out construction activities on frozen ground to minimize surface damage, rutting and erosion
- Use existing trails, roads or cut lines whenever possible as access routes
- Identify and flag buffer areas prior to start of work
- Riparian Buffers shall be a minimum of 30m and increase in size based on slope of land entering waterway. Within these buffers shrub and herbaceous understory veg will be maintained along with trees that do not violate MH Veg Clearance Requirements.
- 7m no machine zone will restrict equipment in close proximity to the waterbody except at the trail crossing.
- Adhere to Department of Fisheries and Oceans (DFO) Operational Statements for Temporary Stream Crossings, Ice Bridges and Snow Fills, and Overhead Line Construction