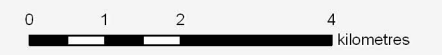


Legend

- Project Area
- Revised Layout (130 WTGS)
- EISR Layout (200 WTGS)
- Wind Monitoring Tower (Project)
- Optioned Lot
- Dwelling
- Other Building
- Excluded Land
- Wind Monitoring Tower (Manitoba Hydro)
- Transmission Line
- Runway, Airstrip
- Cemetery
- Dump
- Electrical Substation Complex
- Provincial Trunk Highway
- Provincial Road
- Road Paved
- Gravel Road
- Dirt Road
- Street, Accessway or Unclassified Road
- Track (Cart or Tractor)
- Railway
- Pipeline
- Watercourse
- Built-up Area
- Waterbody
- Section



St. Joseph Wind Farm Inc.

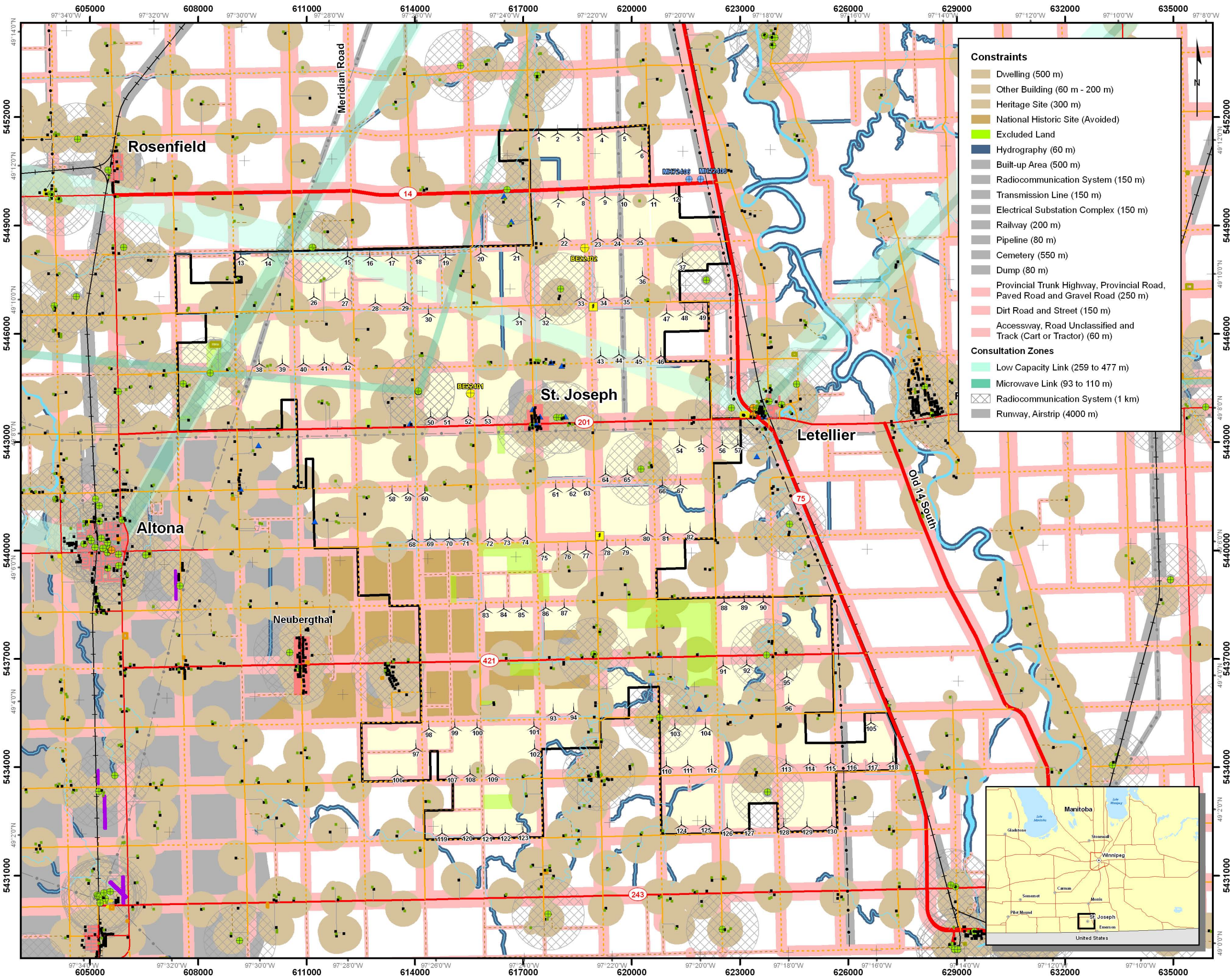
**MAP 1
REVISED PROJECT LAYOUT (130 WTGS)
AND EISR LAYOUT (200 WTGS)**



277-065-040609-04-CLA
Layouts: 277-02-StJoseph-L31
and L30-277-02-StJoseph-L31-20080520-5D
June 04, 2009

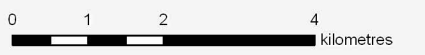
Projection: UTM Zone 14, NAD83
Sources: DTM 1:20 000, Manitoba Land Initiative, NTDB,
NRSI and Industry Canada.
© Her Majesty the Queen in Right of Canada, Department of Natural Resources. All rights reserved.





- Constraints**
- Dwelling (500 m)
 - Other Building (60 m - 200 m)
 - Heritage Site (300 m)
 - National Historic Site (Avoided)
 - Excluded Land
 - Hydrography (60 m)
 - Built-up Area (500 m)
 - Radiocommunication System (150 m)
 - Transmission Line (150 m)
 - Electrical Substation Complex (150 m)
 - Railway (200 m)
 - Pipeline (80 m)
 - Cemetery (550 m)
 - Dump (80 m)
 - Provincial Trunk Highway, Provincial Road, Paved Road and Gravel Road (250 m)
 - Dirt Road and Street (150 m)
 - Accessway, Road Unclassified and Track (Cart or Tractor) (60 m)
- Consultation Zones**
- Low Capacity Link (259 to 477 m)
 - Microwave Link (93 to 110 m)
 - Radiocommunication System (1 km)
 - Runway, Airstrip (4000 m)

- Legend**
- Project Area
 - Wind Turbine
 - Wind Monitoring Tower
 - Transformer Station
 - Optioned Lot
 - Dwelling
 - Other Building
 - Heritage Site
 - Wind Monitoring Tower (Manitoba Hydro)
 - Microwave Link - Stations
 - Radiocommunication System
 - Transmission Line
 - Runway, Airstrip
 - Cemetery
 - Dump
 - Electrical Substation Complex
 - Provincial Trunk Highway
 - Provincial Road
 - Road Paved
 - Gravel Road
 - Dirt Road
 - Street, Accessway or Unclassified Road
 - Track (Cart or Tractor)
 - Railway
 - Pipeline
 - Watercourse
 - Built-up Area
 - Waterbody



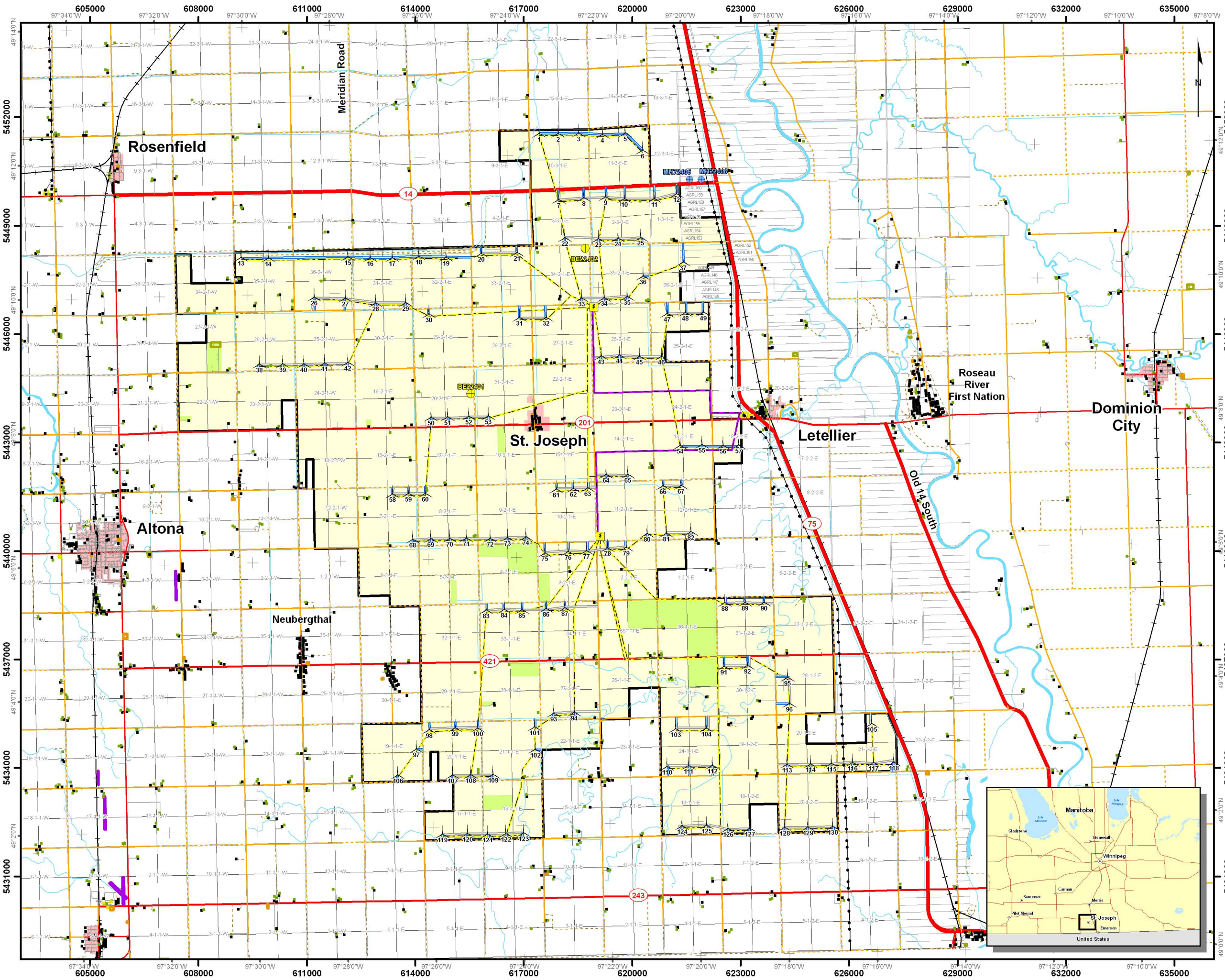
St. Joseph Wind Farm Inc.

MAP 2
REVISED PROJECT CONSTRAINTS



277-066-040609-04-CLA
Layout: 277-02-SUJoseph-L31
June 04, 2009

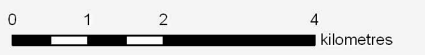
Projection: UTM Zone 14, NAD83
Sources: DTM 1:20 000, Manitoba Land Initiative, NTDB,
NRSI and Industry Canada.
© Her Majesty the Queen in Right of Canada, Department of Natural Resources. All rights reserved.



Legend

- Project Area
- Wind Turbine
- Wind Monitoring Tower (Project)
- Transformer Station
- Proposed 230 kV Overhead Line*
- Collector System (Underground)
- New Road (Option 1)
- New Road (Option 2)
- Optioned Lot
- Dwelling
- Other Building
- Excluded Land
- Wind Monitoring Tower (Manitoba Hydro)
- Transmission Line
- Runway, Airstrip
- Cemetery
- Dump
- Electrical Substation Complex
- Provincial Trunk Highway
- Provincial Road
- Road Paved
- Gravel Road
- Dirt Road
- Street, Accessway or Unclassified Road
- Track (Cart or Tractor)
- Railway
- Watercourse
- Built-up Area
- Waterbody
- Section

* Property compensation for the transmission line and right-of-way will be consistent with Manitoba Hydro's Corporate policy. Any conditions of the Environment Act License pertaining to the transmission line component will be transferred to Manitoba Hydro, who will design, construct, own and operate the transmission line. The proposed transmission line routes shown are based on specific engineering design criteria. Final route optimization might result in minor modifications to the alignments shown.



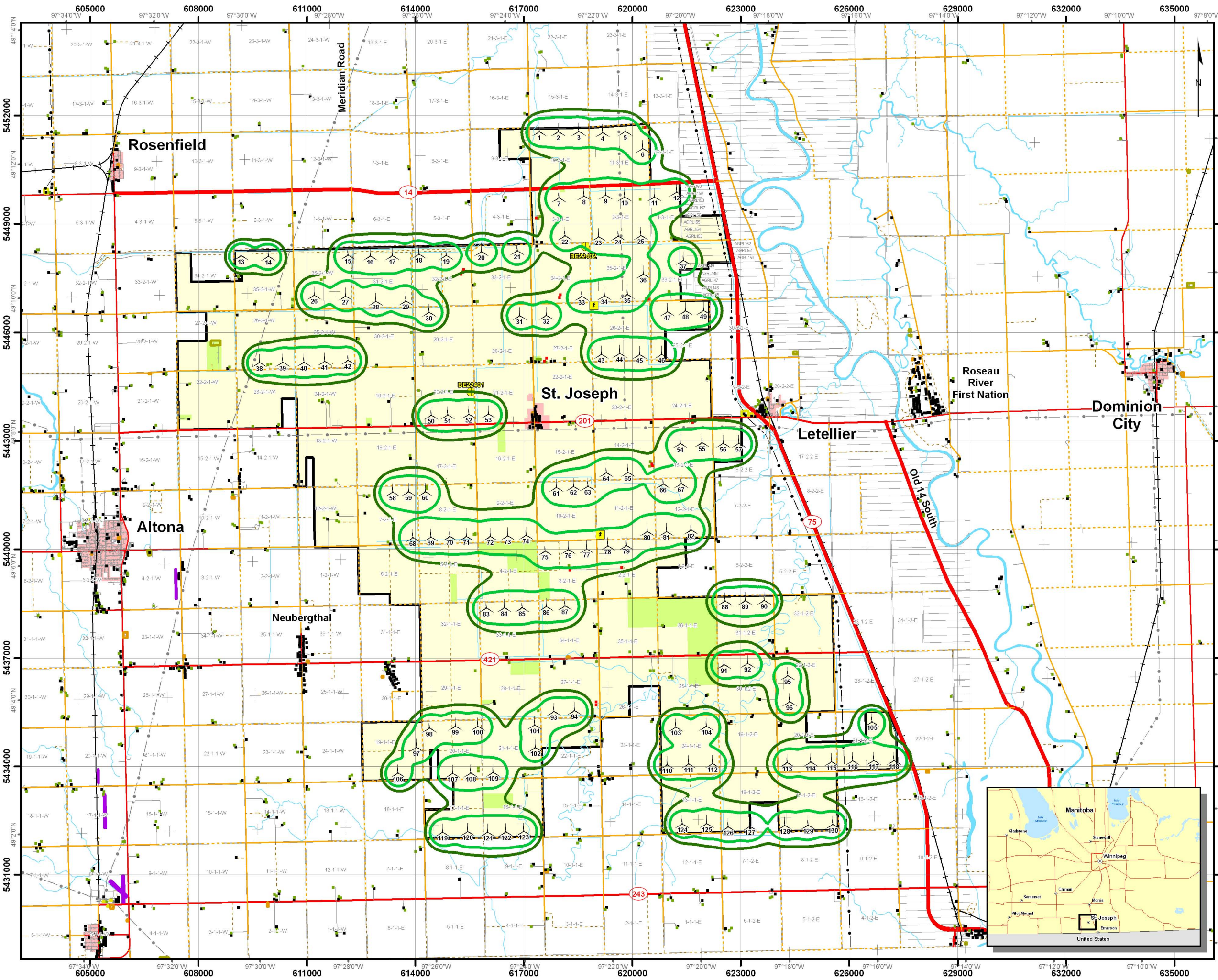
St. Joseph Wind Farm Inc.

**MAP 3
REVISED PROJECT LAYOUT
AND INFRASTRUCTURES**



277-067-040609-05-CLA
Layout: 277-02-SUJoseph-L31
June 04, 2009

Projection: UTM Zone 14, NAD83
Sources: DTM 1:20 000, Manitoba Land Initiative, NTDB, NRSI and Industry Canada.
© Her Majesty the Queen in Right of Canada, Department of Natural Resources. All rights reserved.



Legend

Project Components

- Project Area
- Wind Turbine (Siemens 2.3-101)
- Participant
- Wind Monitoring Tower
- Transformer Station
- Optioned Lot

Other Components

- Point of Reception
- Other Building
- Excluded Land
- Transmission Line
- Runway, Airstrip
- Cemetery
- Dump
- Electrical Substation Complex
- Provincial Trunk Highway
- Provincial Road
- Road Paved
- Gravel Road
- Dirt Road
- Street, Accessway or Unclassified Road
- Track (Cart or Tractor)
- Railway
- Pipeline
- Watercourse
- Built-up Area
- Waterbody
- Section

Noise Isocontours
(for Turbine Sound Power Level of 104.0 dB(A) at 6 m/s)

- 40 dBA for 1.5 m Receptors
- 40 dBA for 4.5 m Receptors



St. Joseph Wind Farm Inc.

MAP 4
REVISED SIMULATED NOISE ISOCONTOURS
(WIND SPEED OF 6 m/s)



277-089-040809-04-CLA
Noise Analysis: GBca10-2775Lp-L30_25x25_A110453-H315-line40-V20080407
and GBca10-2775Lp-L30_25x25_A110453-H315-line40-V20080407
June 04, 2009

Projection: UTM Zone 14, NAD83
Sources: DTM 1:20 000, Manitoba Land Initiative, NTDB,
NRSI and Industry Canada.
© Her Majesty the Queen in Right of Canada, Department of Natural Resources. All rights reserved.

