

MANITOBA MARKETS

Hog Prices



July 23, 2024

[Click here for definitions of how data is collected and calculated.](#)

Exchange rates (Friday close)

1 US \$ = C \$1.3727

1 EURO = C \$1.4942

1 Yen = C \$0.00872

[Data source: Bank of Canada](#)

[Click to view the interactive hog dashboards for current and historical charts.](#)

Manitoba Weighted Average Carcass Prices (including premiums and discounts)

All In Weights C\$/100 kg

| Week | Week ending date | 2024 | 2023 | Change from Previous Week | Change from Previous Year |
|--------------------------|------------------|---------------|---------------|------------------------------|------------------------------|
| 26 | 2024-06-28 | 250.47 | 243.08 | 0.2% | 3.0% |
| 27 | 2024-07-05 | 243.61 | 252.67 | -2.7% | -3.6% |
| 28 | 2024-07-12 | 244.08 | 260.94 | 0.2% | -6.5% |
| 29 | 2024-07-19 | 245.35 | 265.33 | 0.5% | -7.5% |
| Four week average | | 245.88 | 255.50 | - | -3.8% |

Source: Manitoba major processors.

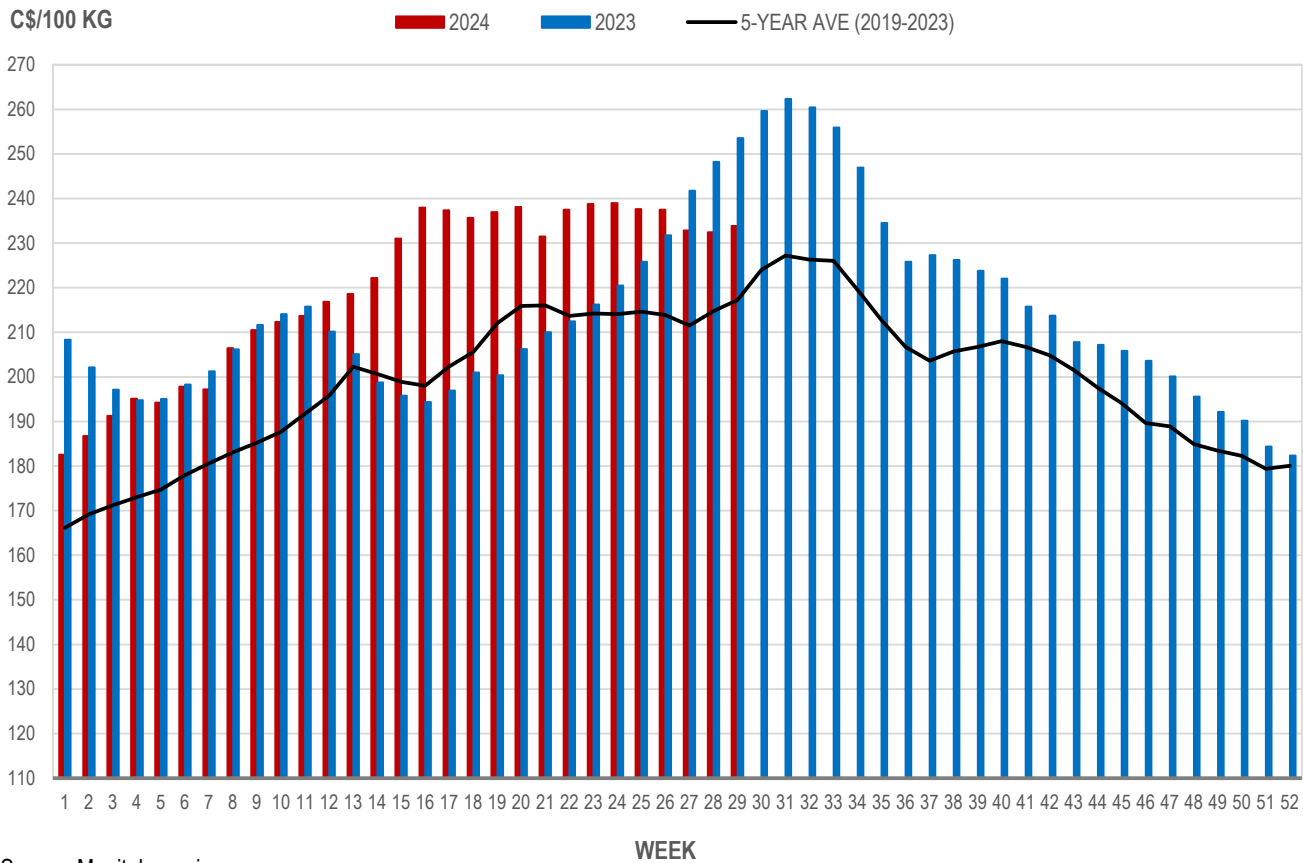


Index 100, C\$/100 kg

| Week | Week ending date | 2024 | 2023 | Change from Previous Week | Change from Previous Year |
|--------------------------|------------------|---------------|---------------|---------------------------|---------------------------|
| 26 | 2024-06-28 | 237.52 | 231.76 | 0.0% | 2.5% |
| 27 | 2024-07-05 | 232.81 | 241.75 | -2.0% | -3.7% |
| 28 | 2024-07-12 | 232.40 | 248.23 | -0.2% | -6.4% |
| 29 | 2024-07-19 | 233.83 | 253.53 | 0.6% | -7.8% |
| Four week average | | 234.14 | 243.82 | - | -4.0% |

Source: Manitoba major processors.

MANITOBA WEIGHTED AVERAGE INDEX 100 HOG PRICES WEEKLY



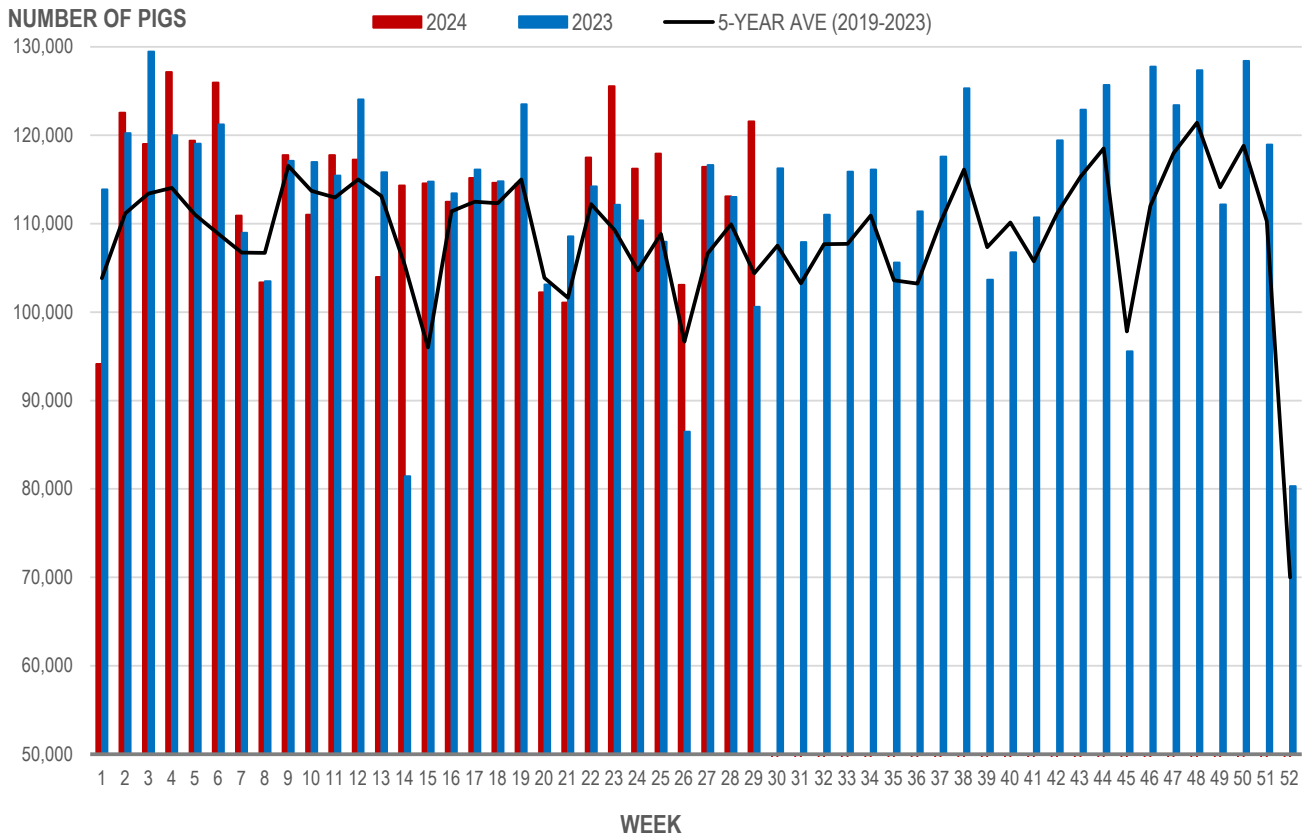
Source: Manitoba major processors

Number of Pigs Processed by Major Processors

| Week | Week ending date | 2024 | 2023 | Change from Previous Week | Change from Previous Year |
|--------------------------|------------------|----------------|----------------|---------------------------|---------------------------|
| 26 | 2024-06-28 | 103,091 | 86,493 | -12.6% | 19.2% |
| 27 | 2024-07-05 | 116,428 | 116,644 | 12.9% | -0.2% |
| 28 | 2024-07-12 | 113,104 | 113,041 | -2.9% | 0.1% |
| 29 | 2024-07-19 | 121,557 | 100,590 | 7.5% | 20.8% |
| Four week average | | 113,545 | 104,192 | - | 9.0% |

Source: Manitoba major processors.

NUMBER OF PIGS PROCESSED BY MAJOR PROCESSORS WEEKLY



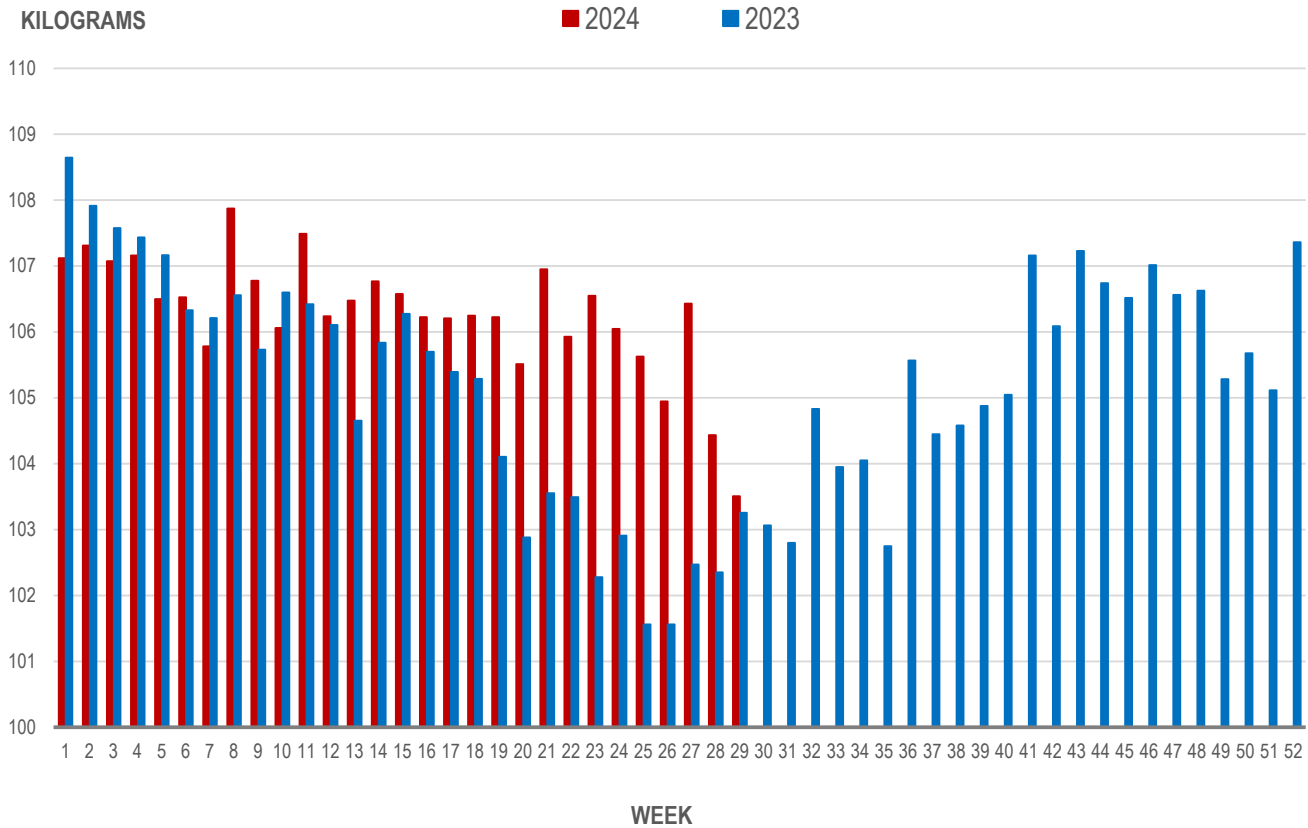
Source: Manitoba major processors

Average Weight of Hogs Processed by Major Processors, Kg

| Week | Week ending date | 2024 | 2023 | Change from Previous Week | Change from Previous Year |
|--------------------------|------------------|---------------|---------------|---------------------------|---------------------------|
| 26 | 2024-06-28 | 104.95 | 101.56 | -0.6% | 3.3% |
| 27 | 2024-07-05 | 106.43 | 102.47 | 1.4% | 3.9% |
| 28 | 2024-07-12 | 104.43 | 102.35 | -1.9% | 2.0% |
| 29 | 2024-07-19 | 103.51 | 103.26 | -0.9% | 0.2% |
| Four week average | | 104.83 | 102.41 | - | 2.4% |

Source: Manitoba major processors.

AVERAGE WEIGHT OF HOGS PROCESSED BY MAJOR PROCESSORS WEEKLY



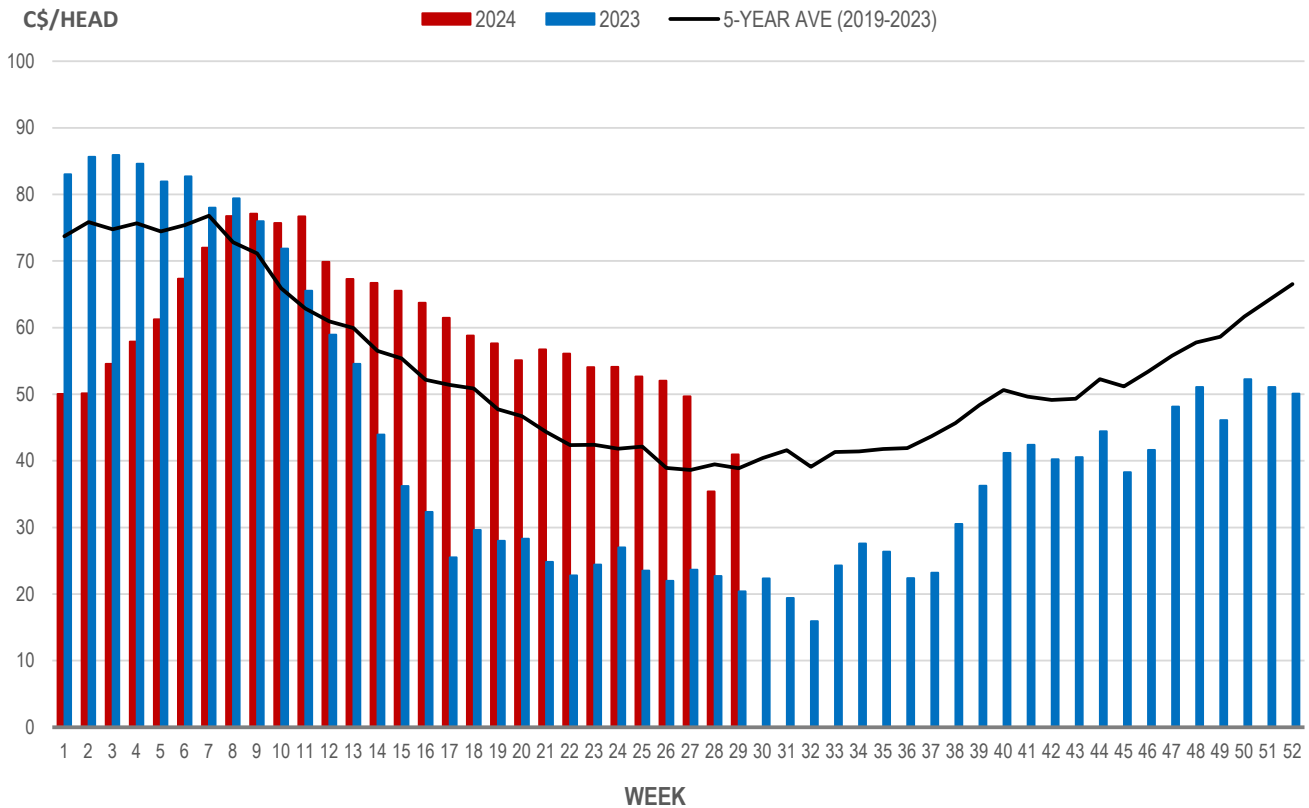
Source: Manitoba major processors

Weaning Pigs (U.S. Total Composite Weighted Average Price per Head)

| | Formula and Cash Low, US\$/Head | Formula and Cash High, US\$/Head | Wtd Avg Price, US\$/Head | Wtd Avg Price, C\$/Head |
|-------------------------|---------------------------------|----------------------------------|--------------------------|-------------------------|
| Early Weaned (10-12 lb) | 12.00 | 48.33 | 29.85 | 40.98 |
| Feeder Pigs (40 lb) | 35.00 | 51.00 | 43.00 | 59.03 |

Source: USDA, AMS

EARLY WEANED PIGS (U.S. TOTAL COMPOSITE WEIGHTED AVERAGE PRICE PER HEAD) WEEKLY



Source: USDA, AMS

Contact us

- www.manitoba.ca/agriculture/markets-and-statistics/
- Email us at industryintelligence@gov.mb.ca
- Follow us on X @MBGovAg

