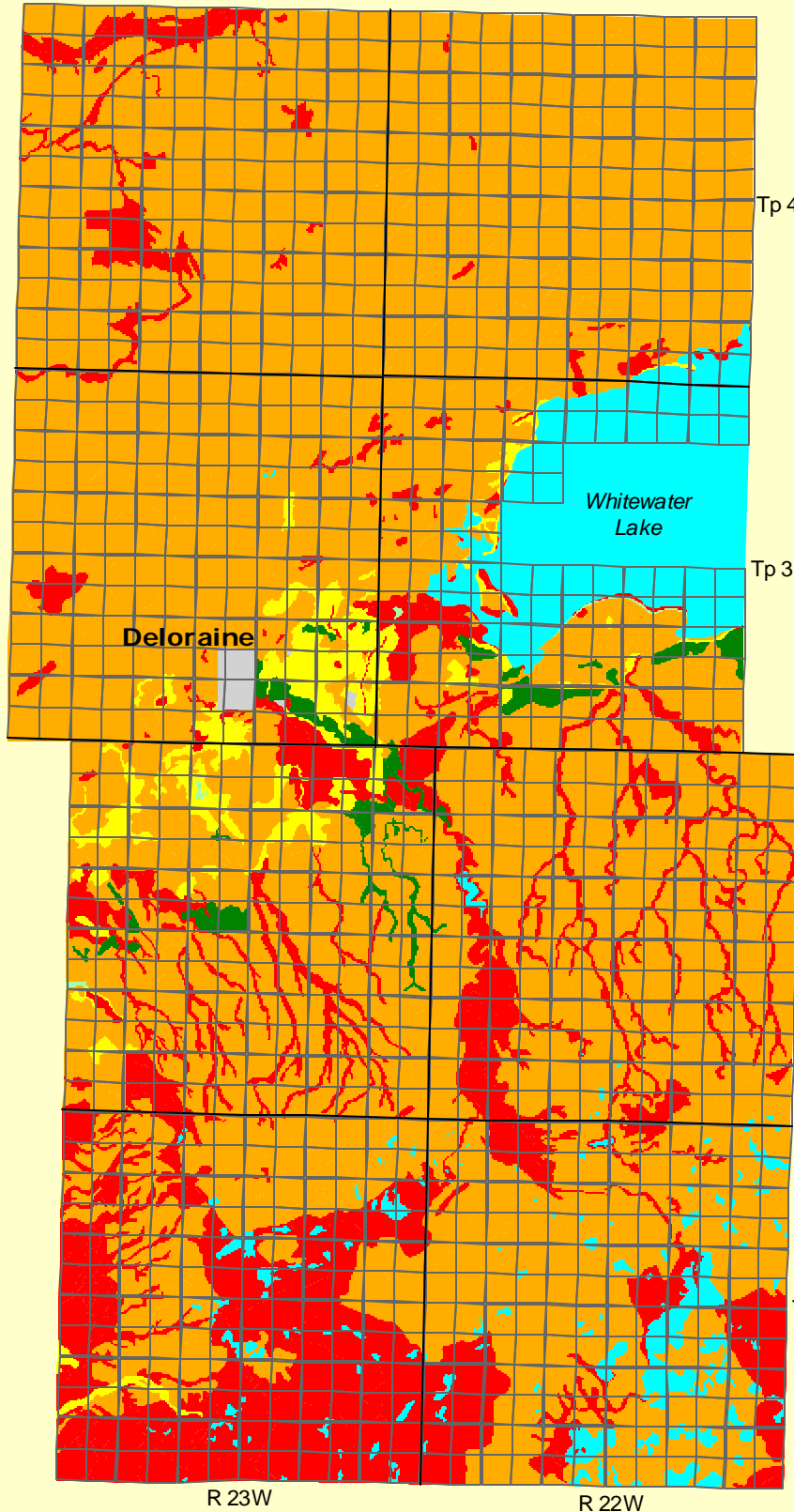

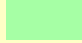







Rural Municipality of Winchester

Soil Suitability for Irrigated Potato Production



		Area (ha)	% of RM
	Class 1	705	0.9
	Class 2	37	0.0
	Class 3	1832	2.4
	Class 4	47653	61.3
	Class 5	21431	27.6
	water		
	unclassified		

Universal Transverse Mercator (NAD27) Projection
 Derived from Detail Soil Information
 (1:20 000, 1:40 00)

Agricultural Resources Section
 Soils and Crops Branch
 Manitoba Agriculture and Food

subject to revision