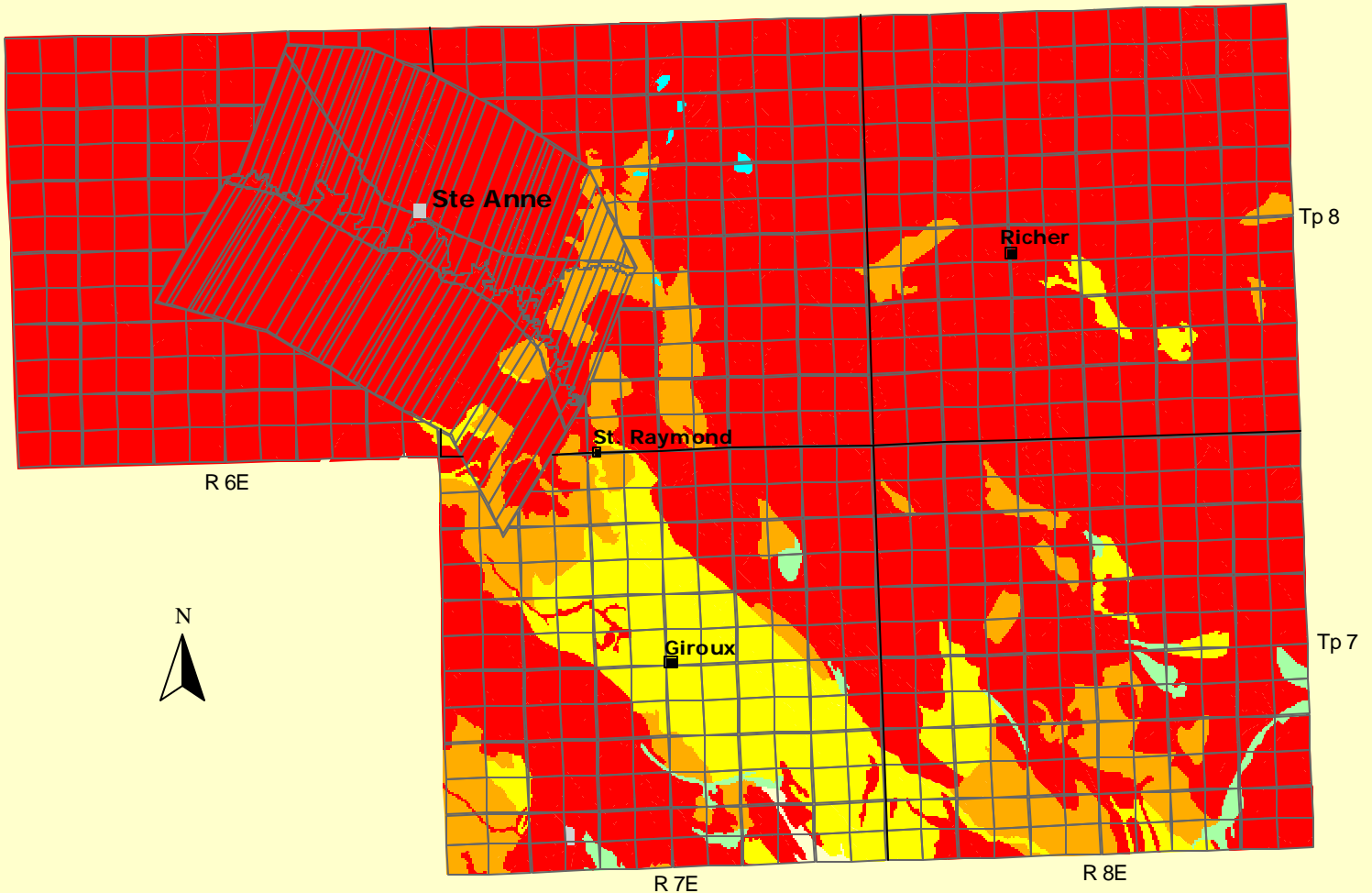
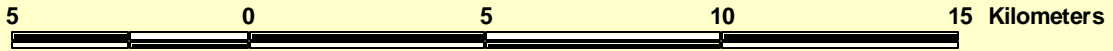

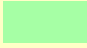







Rural Municipality of Ste Anne Soil Suitability for Irrigated Potato Production



Soil Suitability Classes for Irrigated Potato Production

	Area (ha)	% of RM
 Class 1	-	-
 Class 2	410	0.9
 Class 3	4140	8.6
 Class 4	4072	8.5
 Class 5	39385	82.0
 water		
 unclassified		

Universal Transverse Mercator (NAD27) Projection
Derived from Detail Soil Information (1:50 000)

Agricultural Resources Section
Soils and Crops Branch
Manitoba Agriculture and Food

subject to revision