








Soil Suitability Classes for Irrigated Potato Production

	Area (ha)	% of RM
 Class 1	3587	4.8
 Class 2	7763	10.4
 Class 3	26450	35.5
 Class 4	13158	17.6
 Class 5	22797	30.6
 water		
 unclassified		

Rural Municipality of South Norfolk

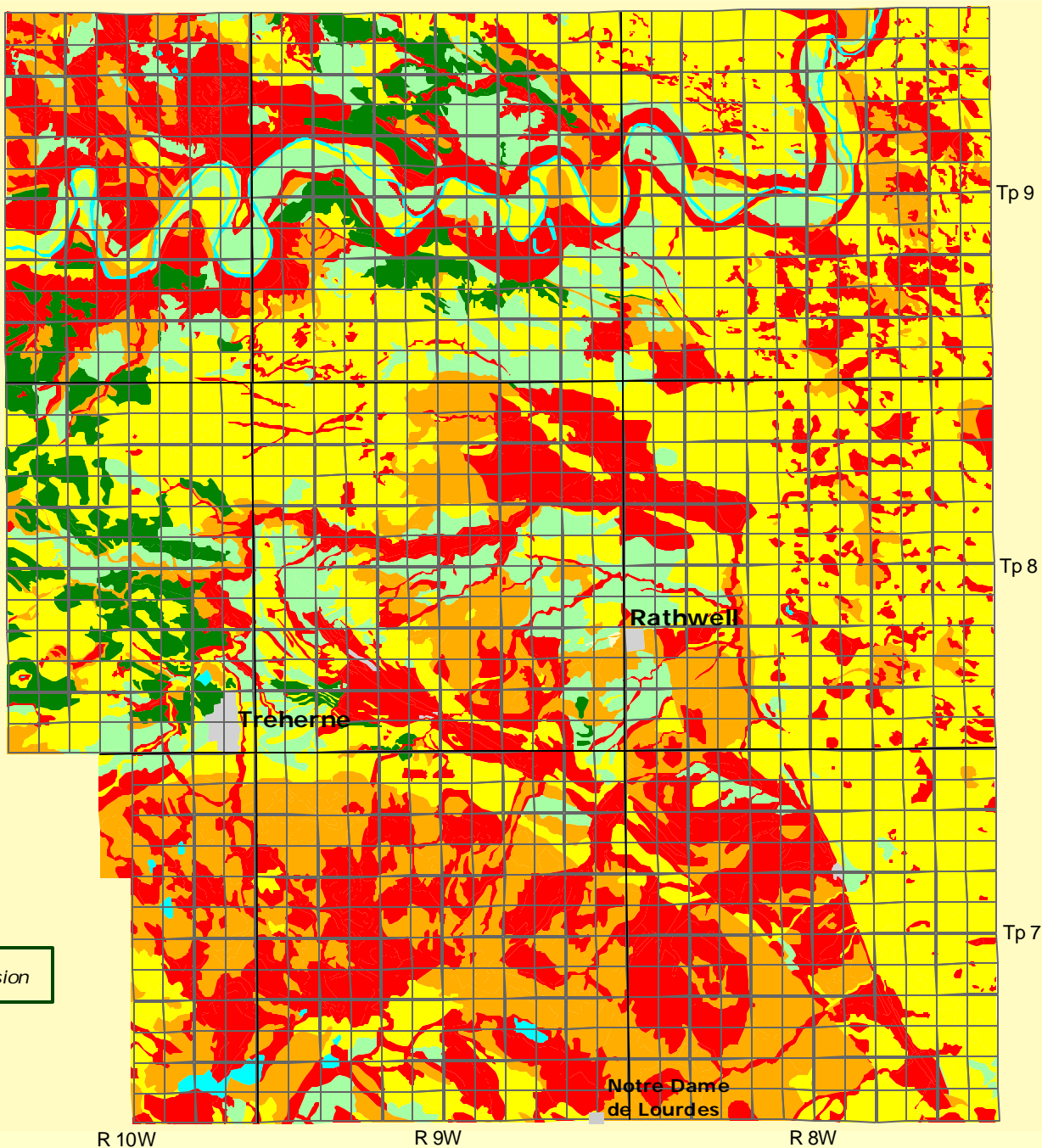
Soil Suitability for Irrigated Potato Production

5 0 5 Kilometers



Universal Transverse Mercator (NAD27) Projection
Derived from Detail Soil Information (1:20 000 & 1:50 000)

Agricultural Resources Section
Soils and Crops Branch
Manitoba Agriculture and Food



subject to revision

R 10W

R 9W

R 8W